

z617f-01 Komachi Apron



Suggested yarn:

- Keito-Zakka Stores Komachi [100% cotton; 109 yds/100m per 1.4 oz./40g skein];
 - color #02 natural, 10 skeins [370g]
 - color #12 lapis lazuli, 2 skeins [70g]

Tools/Notions:

- 3.6mm (approx. US 4 or 5) and 3.9mm (approx. US 6) knitting needles or sizes necessary to achieve gauge
- 3.0mm (approx. US C or D) crochet hook or size necessary to achieve gauge
- 1 button (20mm/0.8")

Finished measurements:

- width 97cm/38.2"
- length 82cm/32.3"

Gauge (10cm/4" square):

- seed stitch: 21 sts and 38 rows

Gauge may vary according to individual knitting style. Change needle size if necessary to achieve gauge. Alternatively, rework pattern with your own gauge measurements.

Summary

Body of apron: Cast on with long-tail cast-on method. Work in k1p1 ribbing and then in seed stitch. Bind off.

Pocket (make 2): Cast on with long-tail cast-on method. Work in seed stitch and then in k1p1 ribbing. Bind off in pattern. Crochet sc edging along 3 edges of pocket (all except for the top of the pocket).

Waist ties & neck strap: Cast on with long-tail cast-on method. Work in k1p1 ribbing, making buttonholes in neck strap where indicated (but not in waist ties). Bind off in pattern.

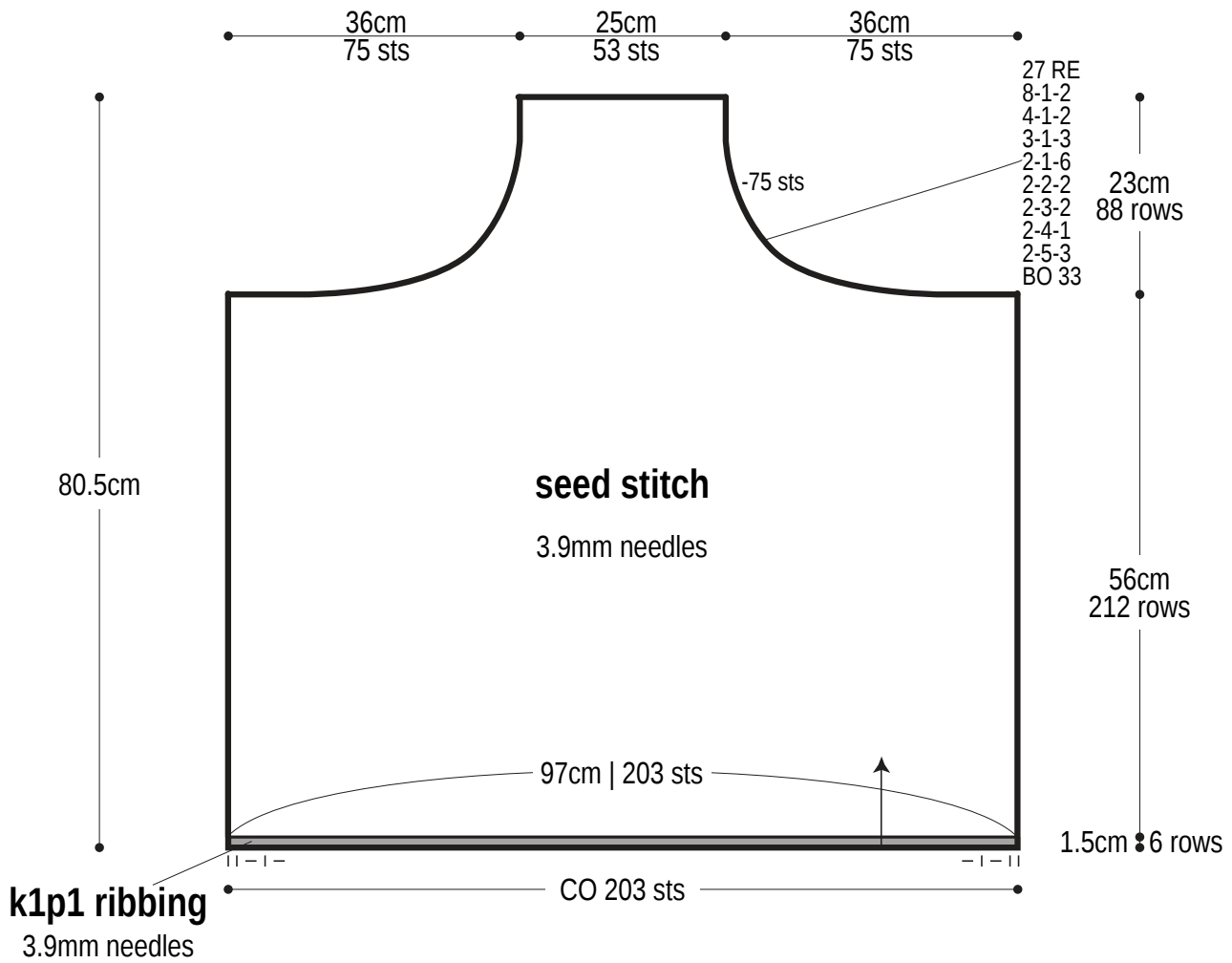
Finishing: Crochet sc edging along body where indicated. Sew pockets, waist ties, and neck strap in place where indicated in finishing schematic.

Abbreviations:

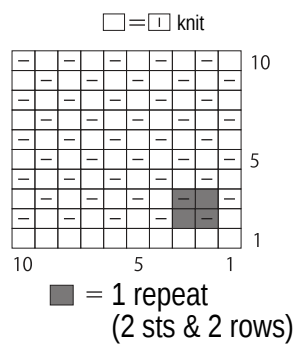
BO = bind off
ch = chain stitch
CO = cast on
k = knit
p = purl
RE = row(s) even
sc = single crochet (US)
#-#-# = rows-stitches-times

Body of apron

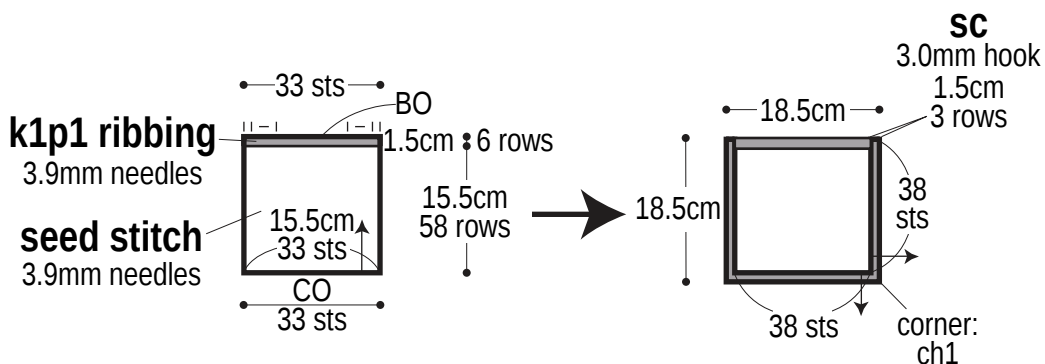
□ = color no. 02 ■ = color no. 12



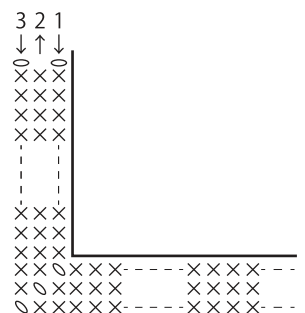
Seed stitch



Pocket (make 2)



Sc edging



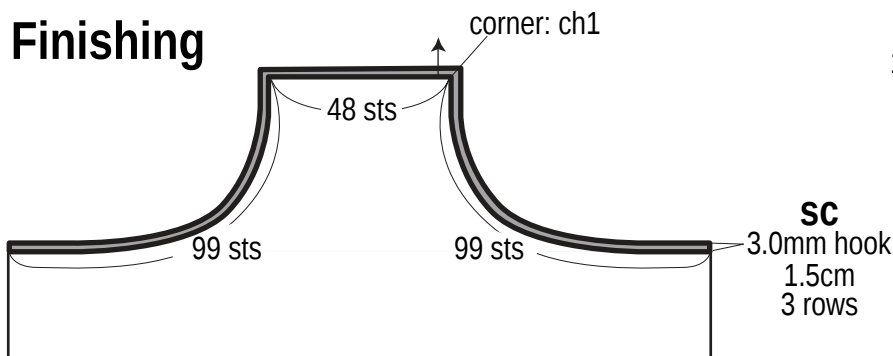
k1p1 ribbing, 3.6mm needles

Diagram of a fabric piece measuring 90cm by 248 rows. The piece is shown as a long, narrow rectangle with a break symbol (two wavy lines) indicating a continuation of the pattern. The label "BO" (Bound Off) is positioned at the left end of the piece.

k1p1 ribbing, 3.6mm needles

buttonhole (1 row)
BO
53cm | 146 rows

Finishing



Neck strap buttonholes

Diagram of a knitted fabric piece, likely a sleeve cuff, showing a 11x146 grid. The grid is divided into sections by row counts and specific row markers.

Legend: □ = □ knit

Row Counts and Markers:

- 9 rows
- buttonhole: 1 row
- 9 rows
- 1 row
- 9 rows
- 1 row

Row Numbers (Right Side): 146, 140, 130, 120, 116

Row Numbers (Bottom): 11, 5, 1

Stitch Pattern: The pattern consists of a series of horizontal cables (2-stitch cables) and a central buttonhole. The buttonhole is located between rows 116 and 120. The cables are located between rows 120 and 146.

SC (Stitch Cable) Details:

- 3.0mm hook
- 1.5cm
- 3 rows

Row Numbers (Bottom): 11, 5, 1

Row Numbers (Right Side): 10, 5, 1(CO row)

