

# 220ss-05 Tiara Openwork Sweater



## Suggested yarn:

- Pierrot Yarns Cotton Neat S Lamé Tiara [95% cotton, 5% polyester; 96 yds/88m per 1.4 oz./40g skein]; color #01 off-white, 10 skeins [380g]

## Tools/Notions:

- 3.6mm (approx. US 4 or 5) and 3.9mm (approx. US 6) knitting needles or sizes necessary to achieve gauge
- cable needle

## Finished measurements:

- bust 88cm/34.6"
- cross back width 38cm/15.0"
- back length 51cm/20.1"
- sleeve length 45.5cm/17.9"

## Gauge (10cm/4" square):

- pattern stitch A: 21 sts and 26 rows
- pattern stitch B: 22 sts and 24 rows

*Gauge may vary according to individual knitting style. Change needle size if necessary to achieve gauge. Alternatively, rework pattern with your own gauge measurements.*

## Summary

**Body (back & front):** Cast on with long-tail cast-on method. Work in k1p1 ribbing and then continue in pattern stitch A. Bind off.

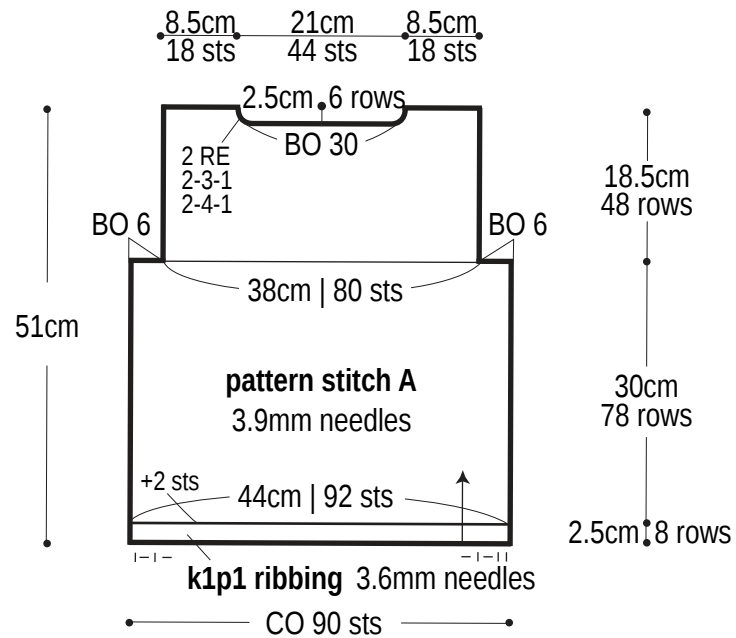
**Sleeve (make 2):** Cast on with long-tail cast-on method. Work in k1p1 ribbing and then continue in pattern stitch B. Bind off.

**Finishing:** Seam shoulders with slip stitch seam. Pick up stitches around neckline; work collar in k1p1 ribbing in the round. Bind off in pattern. Seam sleeves to body with slip stitch seam. Seam each side of body/sleeve with one continuous mattress stitch seam per side of body/arm. Seam underarm gusset with stitches-to-rows mattress stitch.

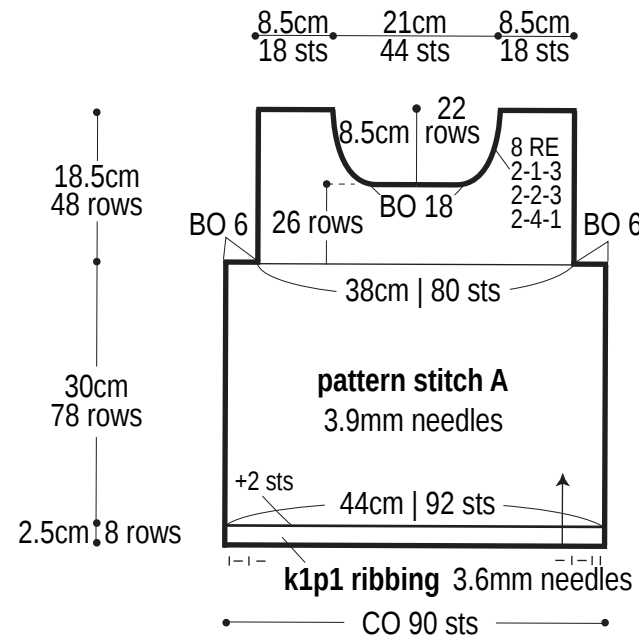
## Abbreviations:

BO = bind off      CO = cast on      k = knit      p = purl      PU = pick up      RE = row(s) even      #-#-# = rows-stitches-times

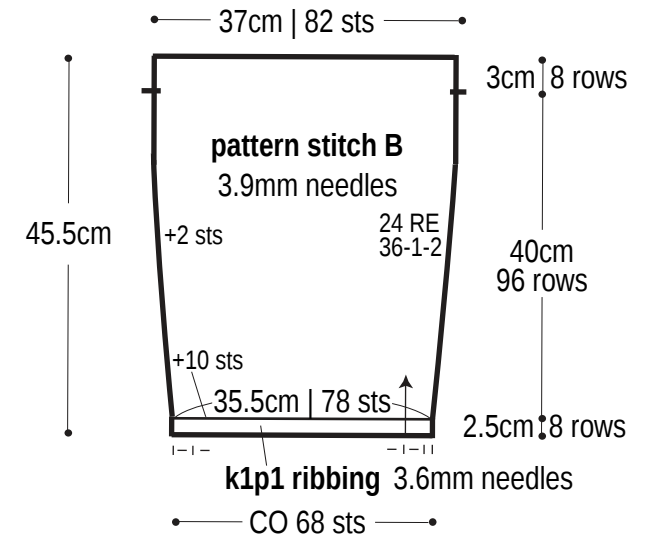
## Back



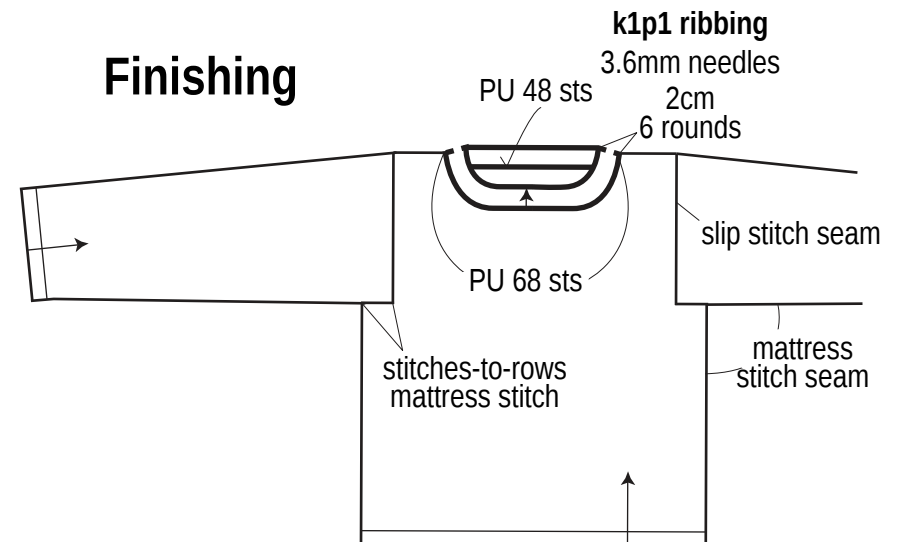
## Front



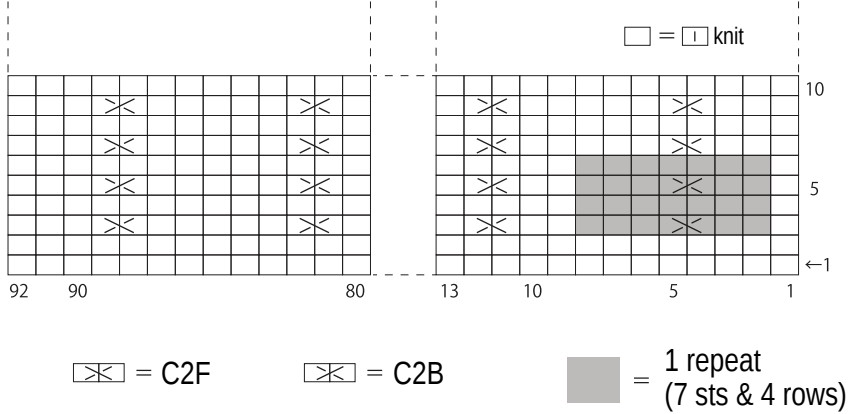
## Sleeve



## Finishing



Pattern stitch A



Pattern stitch B

