

218w-11 Knit Pompom Cap



Suggested yarn:

- Pierrot Yarns Junmo Chuboso / Pure Wool Fingering [40% merino wool, 60% punta wool; 180 yds/165m per 1.4 oz./40g skein];
 - color #414 bordeaux, 1 skein [20g]
 - color #423 mustard, 1 skein [40g]
 - color #436 ecru beige, 1 skein [15g]

Tools/Notions:

- 3.9mm (approx. US 6) knitting needles or size necessary to achieve gauge

Finished measurements:

- head circumference 54cm/21.3"
- hat depth 24cm/9.4"

Gauge (10cm/4" square):

- k1p1 ribbing: 20 sts and 25 rounds

Gauge may vary according to individual knitting style. Change needle size if necessary to achieve gauge. Alternatively, rework pattern with your own gauge measurements.

Summary

✳️**Note:** entire hat worked with 2 strands of yarn held together.

Body of hat: Cast on with long-tail cast-on method. Work k1p1 ribbing in the round. Starting with round 41, work evenly spaced decreases as indicated.

Finishing: After working last round, cut yarn and thread the tail through all remaining stitches. Cinch top of hat shut & weave in the yarn tail. Make pompom and secure to top of hat.

Abbreviations:

CO = cast on

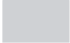

k = knit

OH = on hold (that is, place on stitch holder)

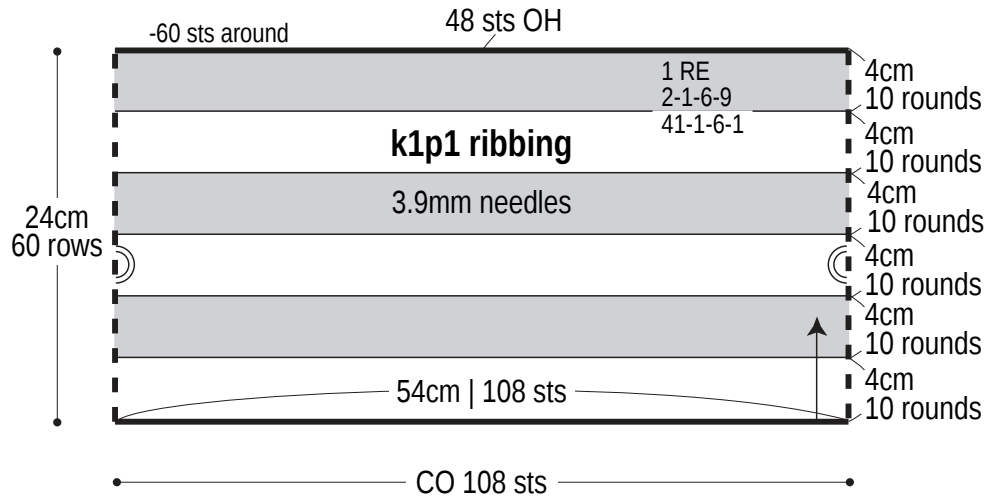
p = purl

RE = row(s) even

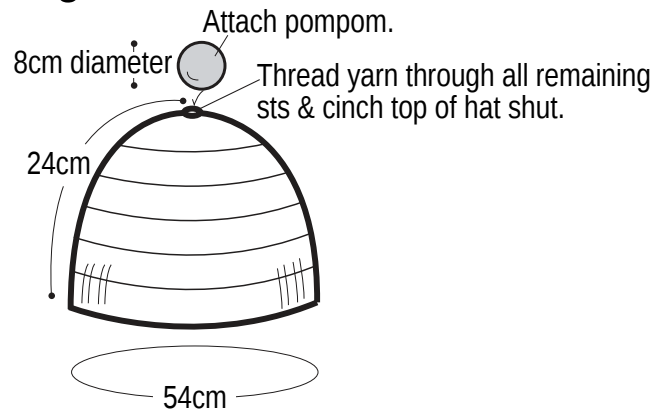
#-#-#-# = rows-stitches-places-times [for evenly spaced decreases across entire span of item]. For example, 1-2-3-4 means "every 1 row, decrease 2 stitches in each of 3 places across the row; do this 4 times total."

 = 2 strands (color no. 423 & color no. 436)
 = 2 strands of color no. 423

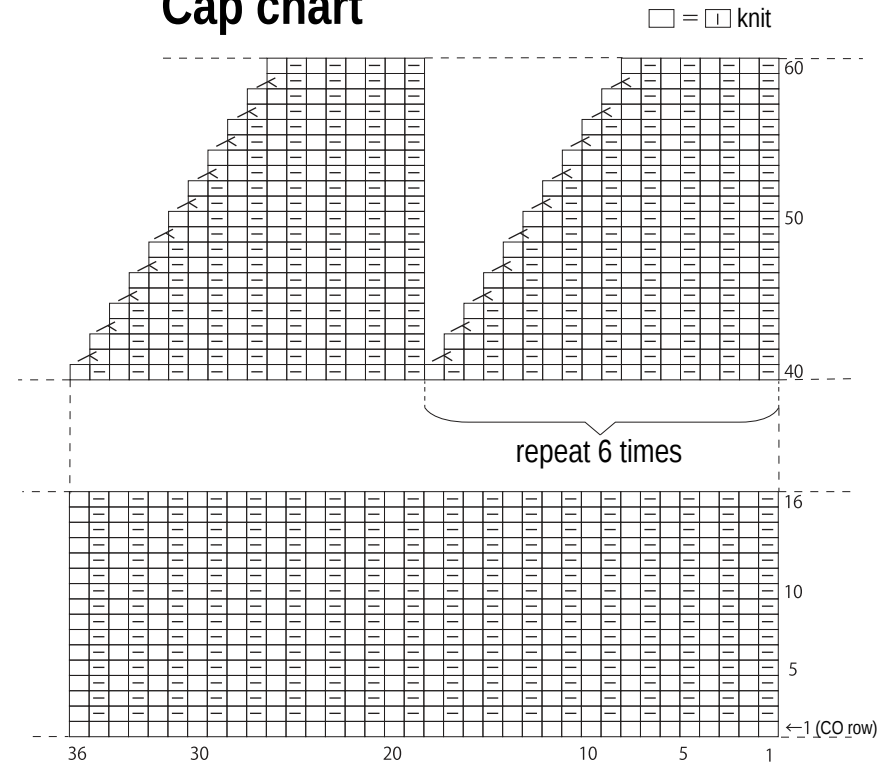
Cap schematic



Finishing



Cap chart



Pompom instructions

