

# 841bc Baby Cardigan



## Suggested yarn:

- Debbie Bliss Baby Cashmerino Tonals [55% merino wool, 33% acrylic, 12% cashmere; 137 yds/125m per 1.8 oz./50g skein]; color #34509 speedwell, 5 skeins [220g]

## Tools/Notions:

- 3.5mm (US E) crochet hook or size necessary to achieve gauge

## Finished measurements:

- chest 62cm/24.4"
- center back neck-to-cuff 34cm/13.4"
- back length 28.5cm/11.2"

## Gauge (10cm/4" square):

- pattern stitch: 22 sts and 10.5 rows

*Gauge may vary according to individual crochet style. Change hook size if necessary to achieve gauge. Alternatively, rework pattern with your own gauge measurements.*

## Summary

❖**Note:** Like all Japanese patterns, stitch counts given here for foundation chains do not include any chain sts needed for turning posts.

**Body & sleeves:** Work foundation chain to begin, then crochet in pattern stitch.

**Ties (make 4):** Crochet according to chart.

**Finishing:** Seam shoulders with chain seam (alternating chain st and slip st as needed to maintain pattern). Seam sleeves to body with chain seam. Seam sides and sleeve undersides with chain seam. Work edging around front edges, neckline, and hem in the round. Seam ties to sides of garment where indicated in finishing schematic.

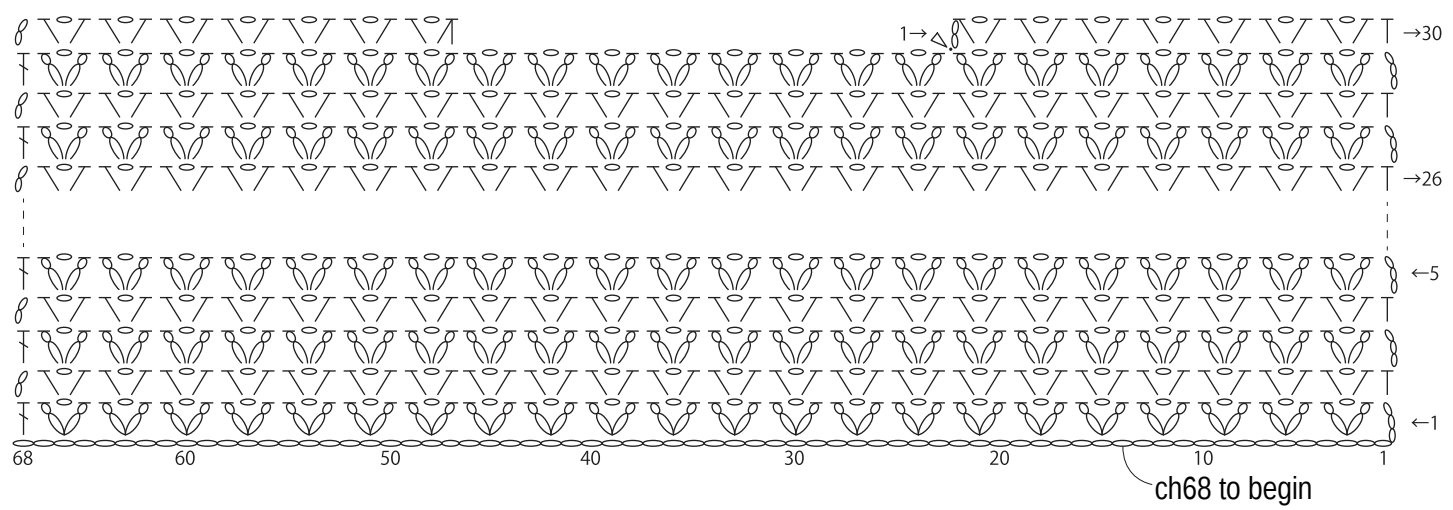
## Abbreviations:

ch = chain  
hdc = half double crochet (US)  
pm = place marker  
rep = pattern repeat(s)  
sc = single crochet (US)

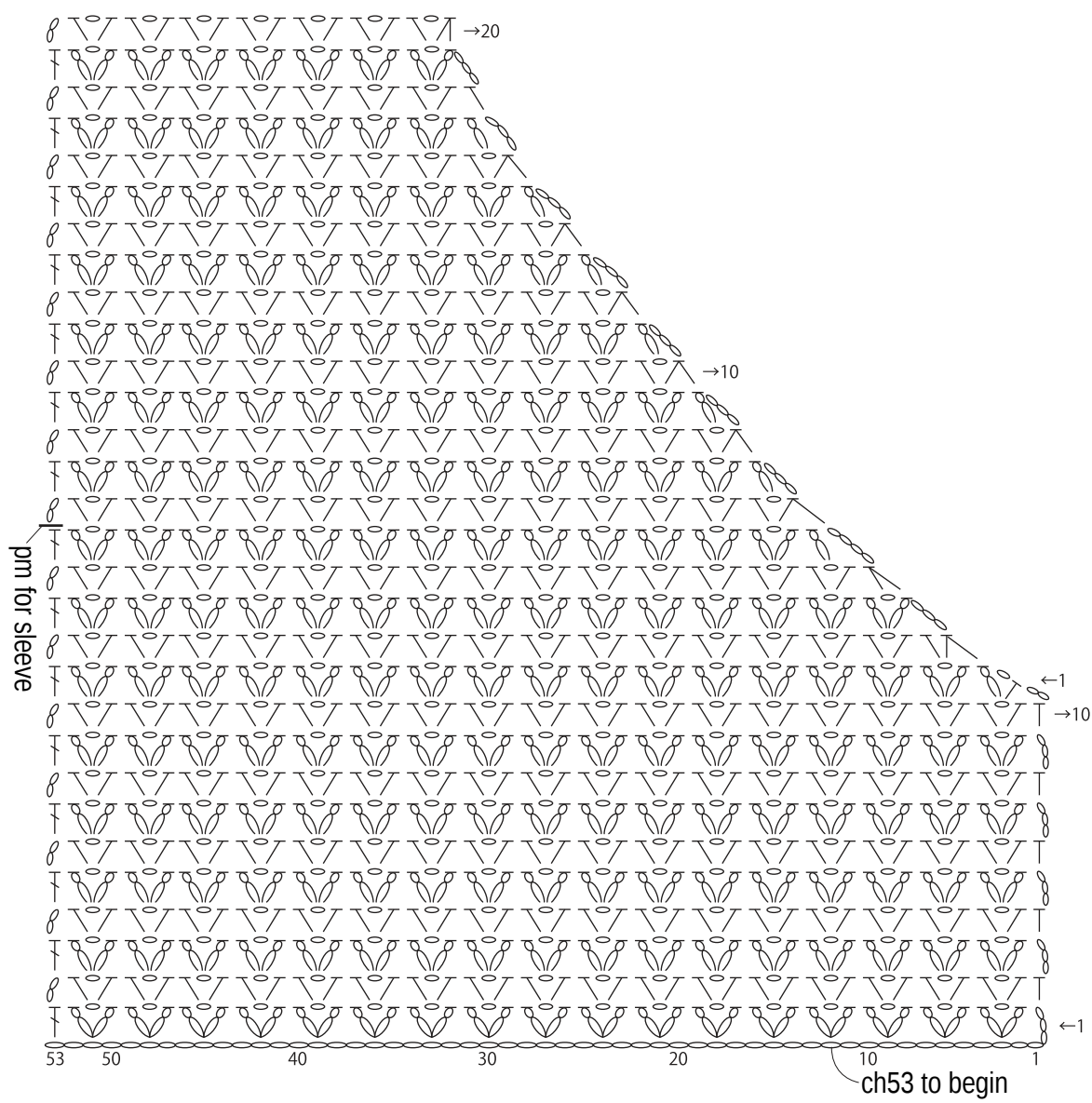
Diagram illustrating the finishing steps for the cardigan:

- 9 rep from back**: Indicated for the top edge of the collar.
- 3.5mm hook** and **0.5cm | 1 round**: Indicated for the top edge of the collar.
- 16 rep**: Indicated for the side edge of the collar.
- 7 rep**: Indicated for the side edge of the collar.
- 17 rep**: Indicated for the side edge of the collar.
- 21 rep from back hem**: Indicated for the bottom edge of the collar.
- 4.5cm**: Indicated for the width of the collar.
- 2.5cm**: Indicated for the width of the collar.
- 1cm**: Indicated for the width of the collar.
- ties**: Indicated for the two ties on the side edges of the collar.
- Attach these 2 ties to the inside of the cardigan.**: Instruction for the final assembly.

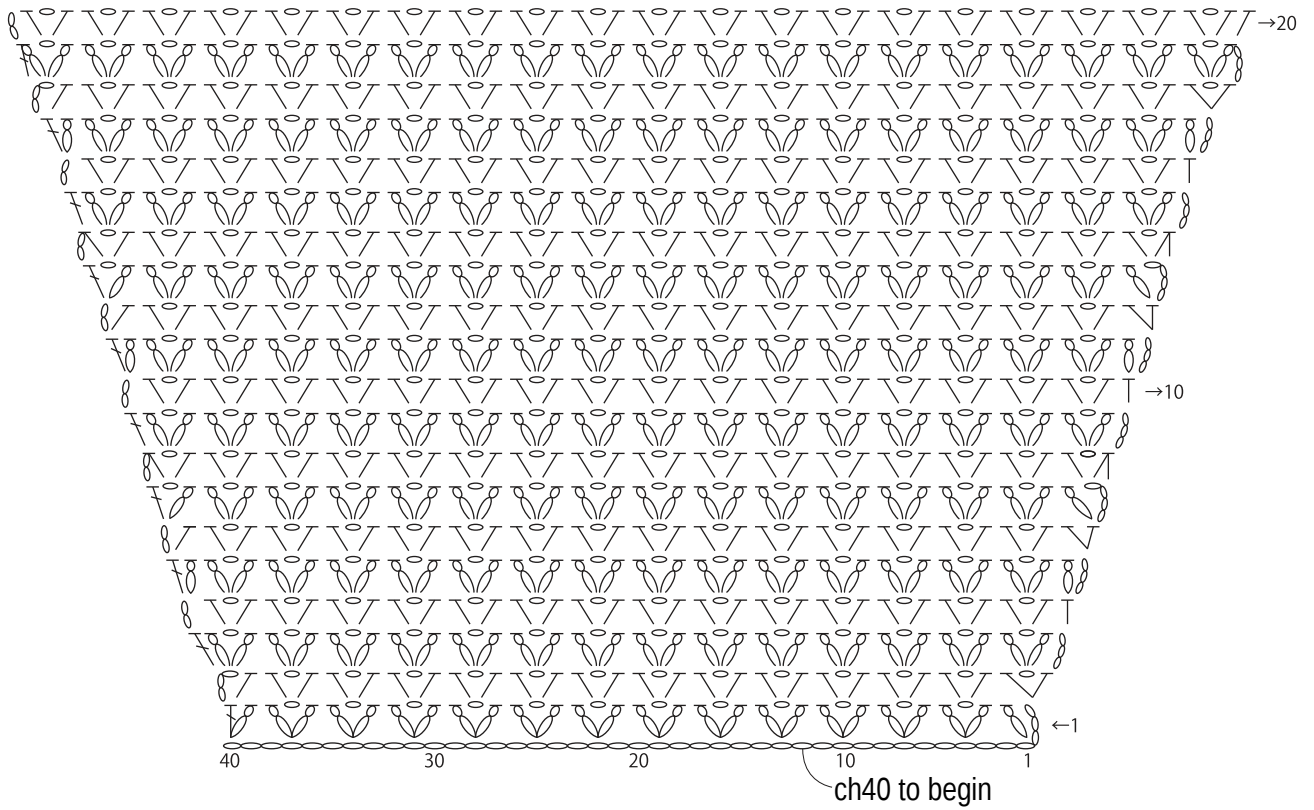
# Back



# Right front



# Sleeve



# Edging

