

1244fs Frilly Shawl



Suggested yarn:

- Pierrot Yarns Kushel [70% silk, 30% cashmere; 106 yds/97m per 1.1 oz./30g skein]; color #04 aqua blue, 5 skeins [130g]
- Pierrot Yarns Julika [51% mohair, 34% nylon, 15% merino wool; 378 yds/346m per 1.1 oz./30g skein]; color #05 mermaid, 3 skeins [50g]

Tools/Notions:

- 2.5mm (approx. US B or C) and 3.0mm (approx. US C or D) crochet hooks or sizes necessary to achieve gauge

Finished measurements:

- width 18.5cm/7.3"
- length 79cm/31.1"

Gauge (10cm/4" square):

- pattern stitch & filet stitch: 25.5 sts and 10 rows
- special mesh stitch: 7 chain spaces and 13 rows

Gauge may vary according to individual crochet style. Change hook size if necessary to achieve gauge. Alternatively, rework pattern with your own gauge measurements.

Summary

❖**Note 1:** Like all Japanese patterns, stitch counts given here for foundation chains do not include any chain sts needed for turning posts.

❖**Note 2:** Other than the ties, entire shawl is worked with 2 strands of yarn held together (Kushel & Julika).

Part A: Work foundation chain to begin, then work in pattern stitch and special mesh stitch.

Part B: Join yarn to last row of the pattern stitch section of part A. Work part B in filet stitch and special mesh stitch.

Part C: Join yarn to last row of the filet stitch section of part B. Work part C in filet stitch, special mesh stitch, and mesh stitch.

Finishing: Crochet edging according to finishing schematic. Crochet 2 ties according to chart and attach each to one side of front of shawl (see finishing schematic).

Abbreviations:

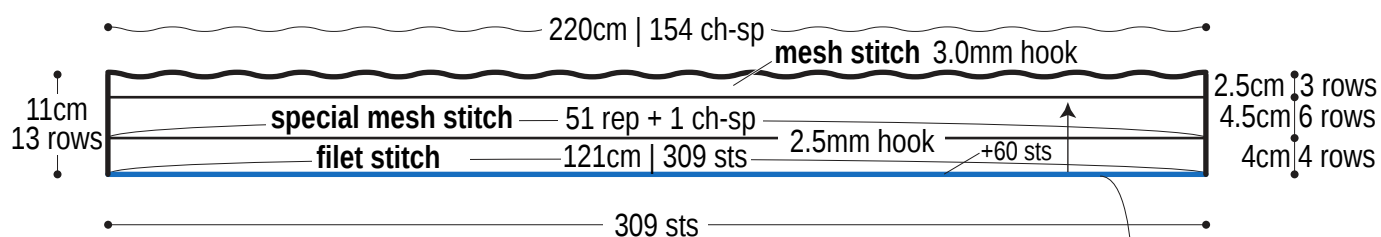
ch = chain

ch-sp = chain space(s)

dc = double crochet (US)

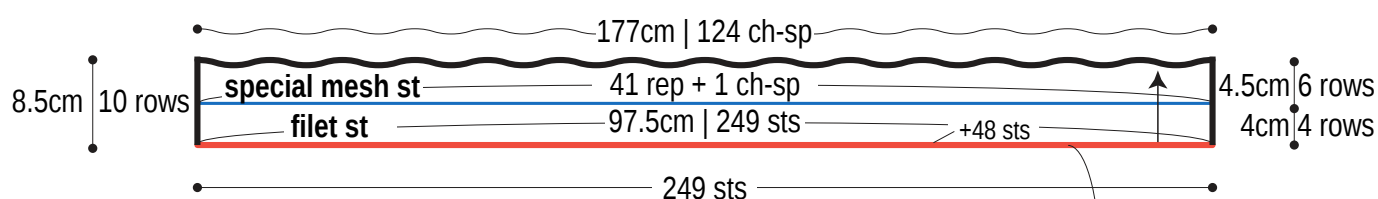
hdc = half double crochet (US)

Part C



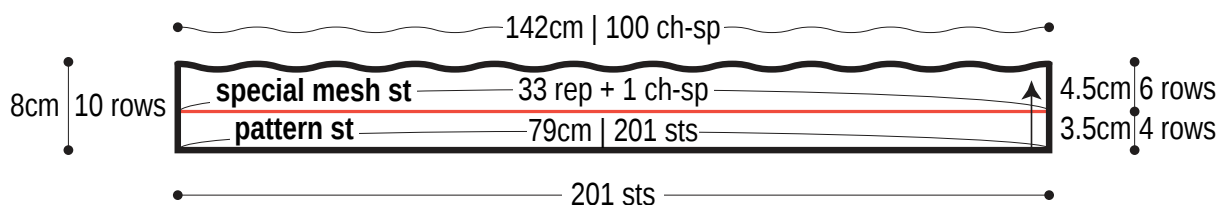
※For special mesh stitch section of part B, join yarn to last row of filet st section on right side.

Part B 2.5mm hook



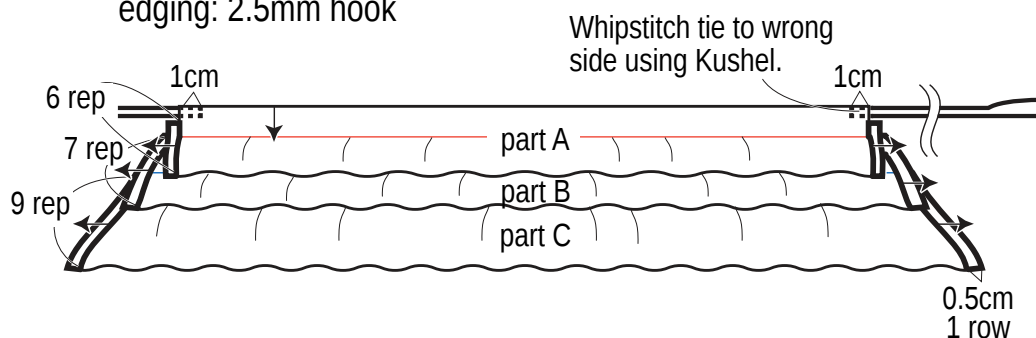
※For special mesh stitch section of part A, join yarn to last row of pattern st section on right side.

Part A 2.5mm hook



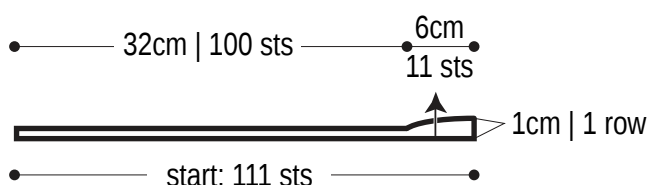
Finishing

edging: 2.5mm hook

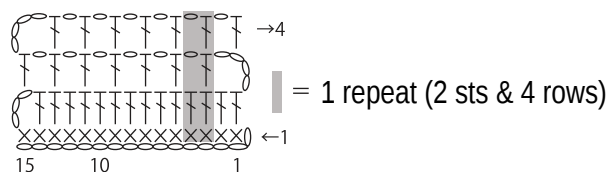


Tie (make 2)

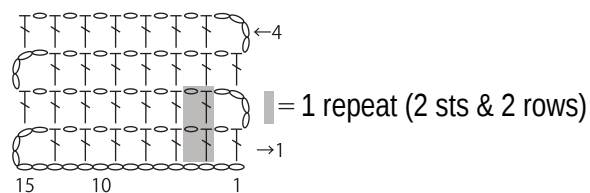
2.5mm hook,
Kushel



Pattern stitch

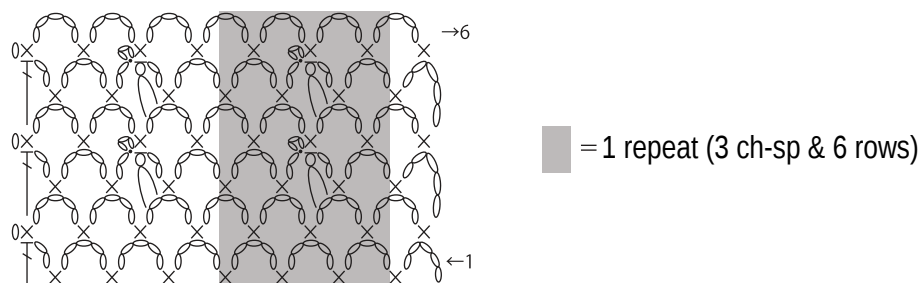


Filet stitch

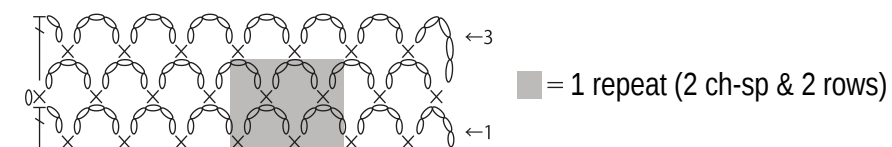


Special mesh stitch

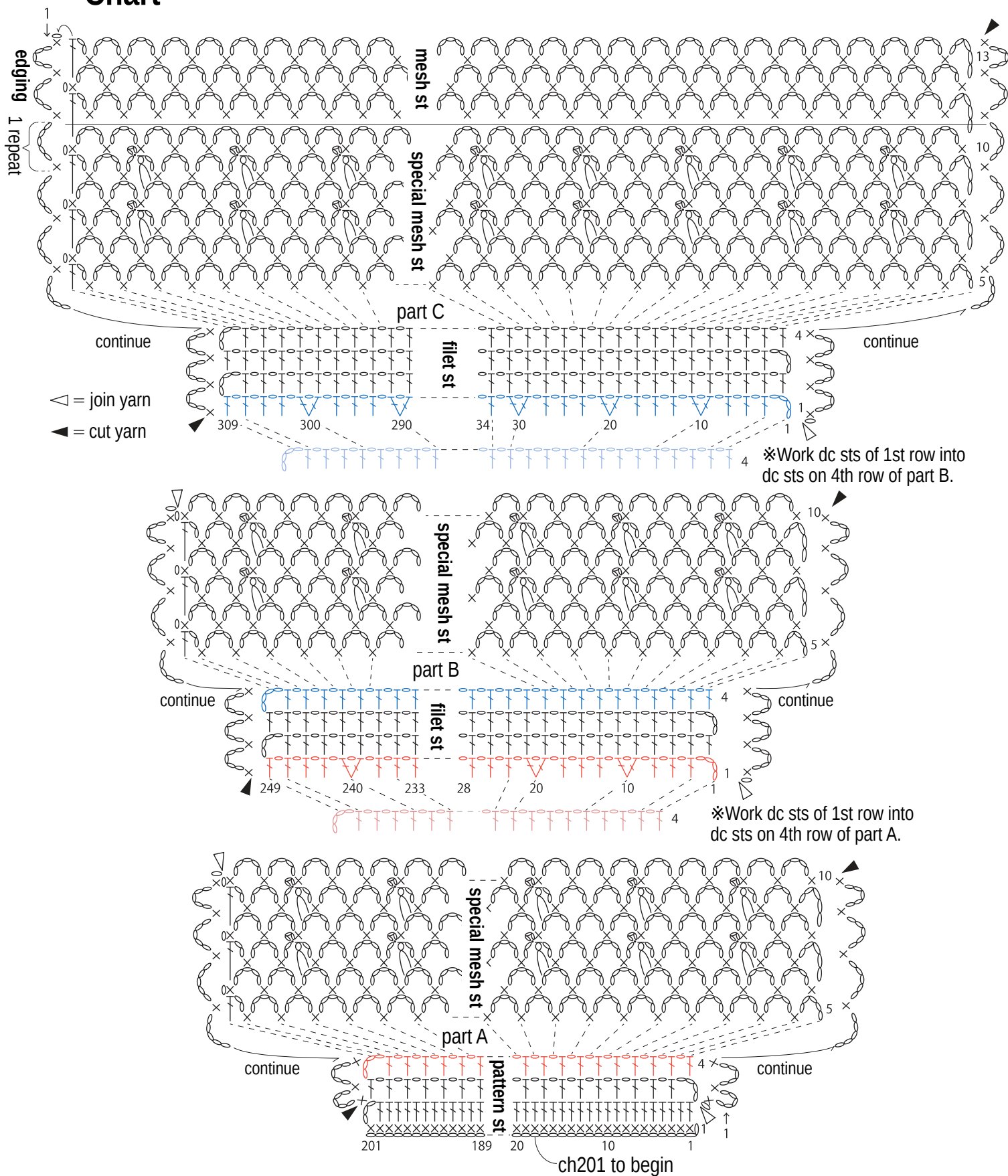
 = 2-hdc cluster finished with sc and ch3 picot



Mesh stitch



Chart



Tie (make 2)

