

# 219W-06 Open Sleeve Sweater



## Suggested yarn:

- Pierrot Yarns Arles Fingering [100% baby alpaca; 117 yds/107m per 1.1 oz./30g skein]; color #06 charcoal gray, 9 skeins [270g]
- Pierrot Yarns Dandy Alice [100% merino wool; 151 yds/138m per 1.4 oz./40g skein]; color #03 charcoal gray, 7 skeins [270g]
- Pierrot Yarns Nimes M [70% baby alpaca, 30% nylon; 101 yds/92m per 0.9 oz./25g skein]; color #11 off-white, 1 skein [20g]

## Tools/Notions:

- 3.9mm (approx. US 6) and 4.5mm (US 7) knitting needles or sizes necessary to achieve gauge
- cable needle
- 10 buttons (18mm/0.7")

## Finished measurements:

- bust 94cm/37.0"
- cross back width 34cm/13.4"
- back length 54cm/21.3"
- sleeve length 56cm/22.0"

## Gauge (10cm/4" square):

- pattern stitch A (with 4.5mm needles): 21 sts and 24 rows
- pattern stitches B & B': 21.5 sts and 25 rows
- pattern stitch C: 26 sts and 25 rows

*Gauge may vary according to individual knitting style. Change needle size if necessary to achieve gauge. Alternatively, rework pattern with your own gauge measurements.*

## Summary

❖**Note:** Other than the k1p1 ribbing, work entire garment with 2 strands of yarn held together (1 strand of Arles Fingering & 1 strand of Dandy Alice).

**Body (front & back):** Cast on with long-tail cast-on method. Work in pattern stitches A, B, B', and C.

**Sleeve & sleeve edging (make 2 sets):** For sleeve, cast on with long-tail cast-on method, then work in pattern stitch B. Reverse shaping of right back and left front sleeve pieces for right front and left back pieces, respectively. Cast on for back sleeve edging with long-tail cast-on method; work in k1p1 ribbing. Bind off. Work front sleeve edging in the same manner except that you will work buttonholes as well. Seam sleeve and sleeve edging together from wrong side using mattress stitch.

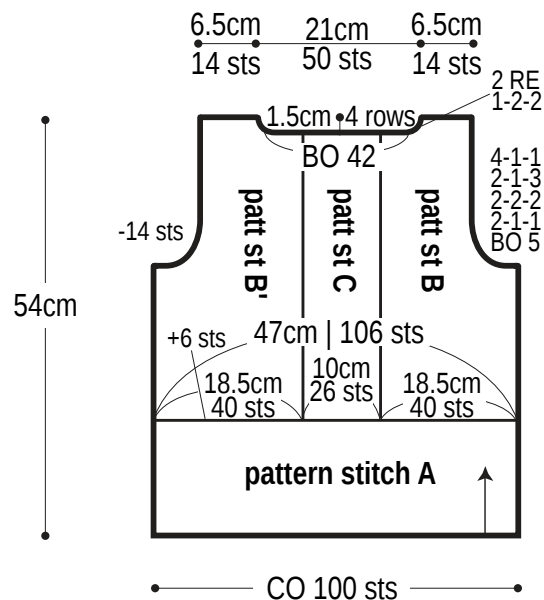
**Finishing:** Seam shoulders with slip stitch seam. Pick up stitches around neckline; work collar in pattern stitch A in the round. Bind off in pattern. Overlap sleeve parts at center of sleeve cap as indicated in finishing schematic; baste in place. Seam sides and sleeve undersides with mattress stitch. Seam sleeves to body with slip stitch seam.

## Abbreviations:

BO = bind off      CO = cast on      k = knit      p = purl      PU = pick up      RE = row(s) even      #-#-# = rows-stitches-times

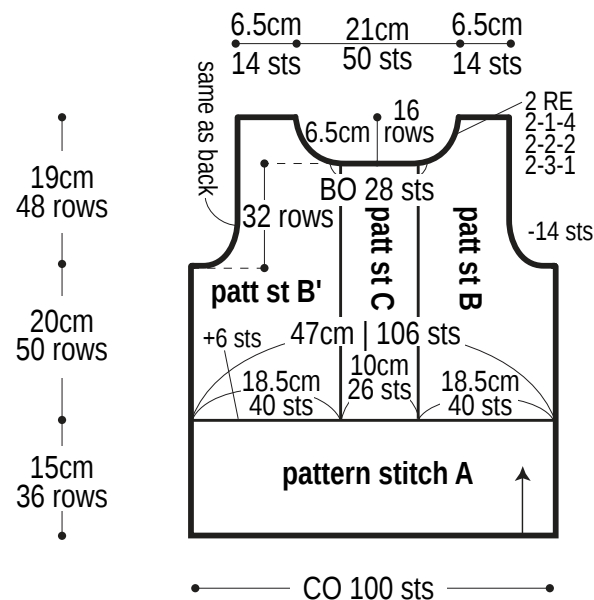
## Back

2 strands of yarn  
(Arles Fingering & Dandy Alice)



## Front

2 strands of yarn  
(Arles Fingering & Dandy Alice)



## Sleeve

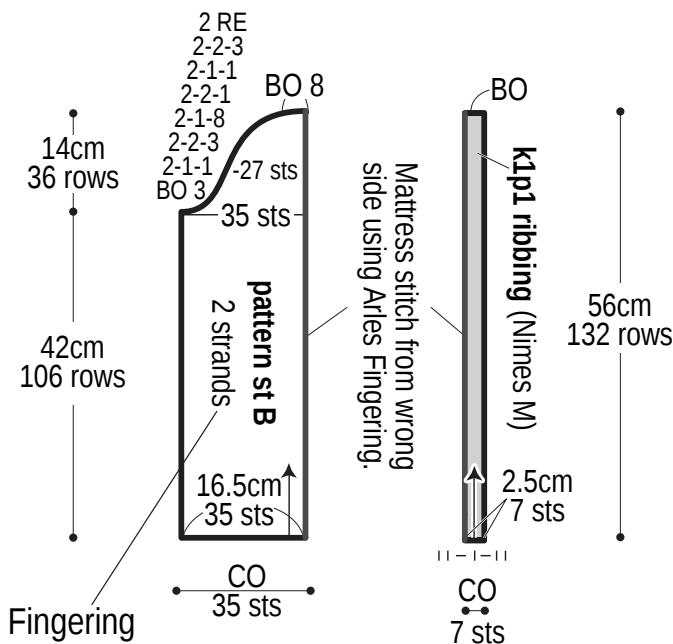
right back sleeve,  
left front sleeve

**4.5mm needles**

※Reverse shaping for  
right front and left back.

sleeve edging  
**3.9mm needles**

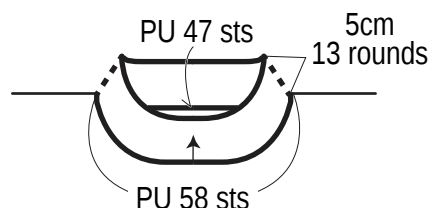
※Work buttonholes in  
front sleeve edging only.



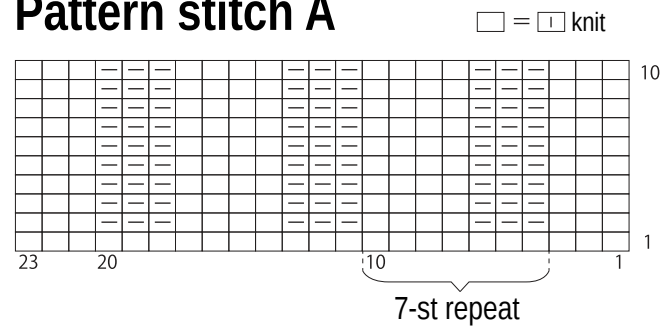
## Collar: pattern stitch A

3.9mm needles

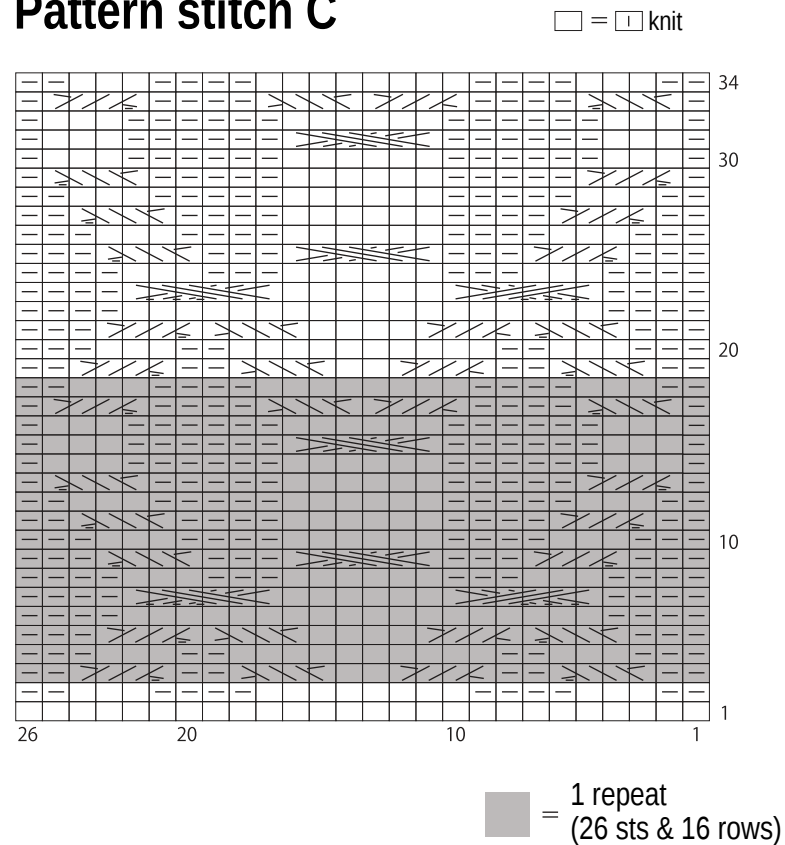
2 strands of yarn  
(Arles Fingering & Dandy Alice)



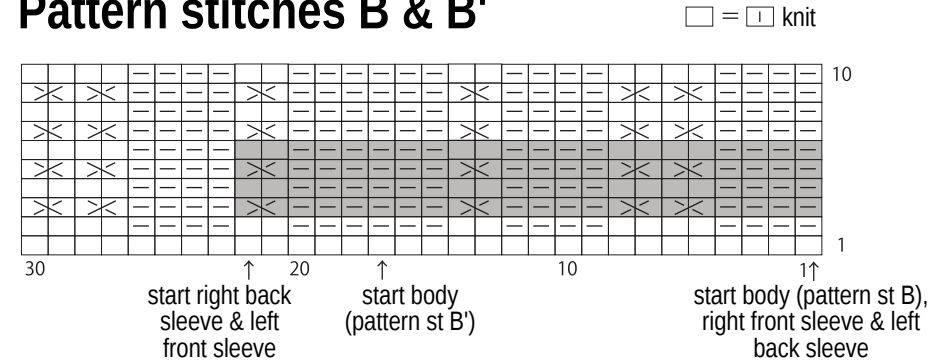
## Pattern stitch A



## Pattern stitch C



## Pattern stitches B & B'



■ = 1 repeat  
(22 sts & 4 rows)

⊗ = C2F

⊗ = C4F  
(slip 3 sts to cable needle and hold in front, k1, k3 from cable needle)

⊗ = C4B  
(slip 1 st to cable needle and hold in back, k3, k1 from cable needle)

⊗ = C2B

⊗ = C4Fp  
(slip 3 sts to cable needle and hold in front, p1, k3 from cable needle)

⊗ = C4Bp  
(slip 1 st to cable needle and hold in back, k3, p1 from cable needle)

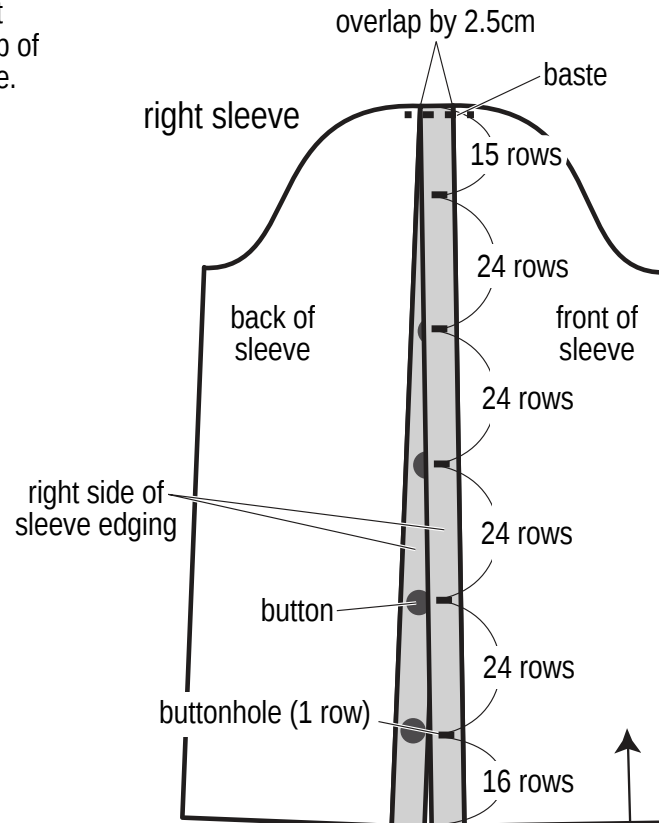
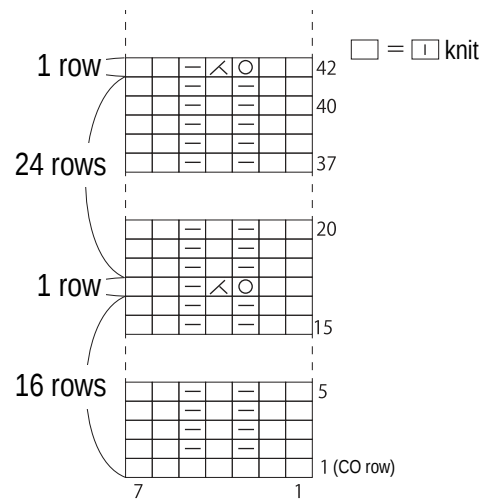
⊗ = C6F

⊗ = C6Fp  
(slip 3 sts to cable needle and hold in front, p3, k3 from cable needle)

⊗ = C6Bp  
(slip 3 sts to cable needle and hold in back, k3, p3 from cable needle)

## Buttonholes & sleeve cap finishing

※For buttonholes in left sleeve, reverse shaping of right sleeve. For both sleeves, place front sleeve piece on top of back sleeve piece with 2.5cm overlap and baste in place.



Use QR code on smartphone to view a video tutorial about how to work the C4Fp cable stitch.



Use QR code on smartphone to view a video tutorial about how to work the C4Bp cable stitch.

