

219W-02 Over Sweater



Suggested yarn:

- Pierrot Yarns Soft Merino Bulky [100% merino wool; 44 yds/40m per 1.4 oz./40g skein];
 - color #3 brown, 14 skeins [550g]
 - color #20 burgundy, 9 skeins [340g]

Tools/Notions:

- 6.3mm (approx. US 10½) and 7.0mm knitting needles or sizes necessary to achieve gauge

Finished measurements:

- bust 160cm/63.0"
- back length 71cm/28.0"
- center back neck-to-cuff 73cm/28.7"

Gauge (10cm/4" square):

- pattern stitch: 12.5 sts and 20 rows
- stockinette stitch: 13 sts and 18 rows

Gauge may vary according to individual knitting style. Change needle size if necessary to achieve gauge. Alternatively, rework pattern with your own gauge measurements.

Summary

Body (back & front): Cast on with long-tail cast-on method. Work in k1p1 ribbing, then continue in pattern stitch, changing color when indicated.

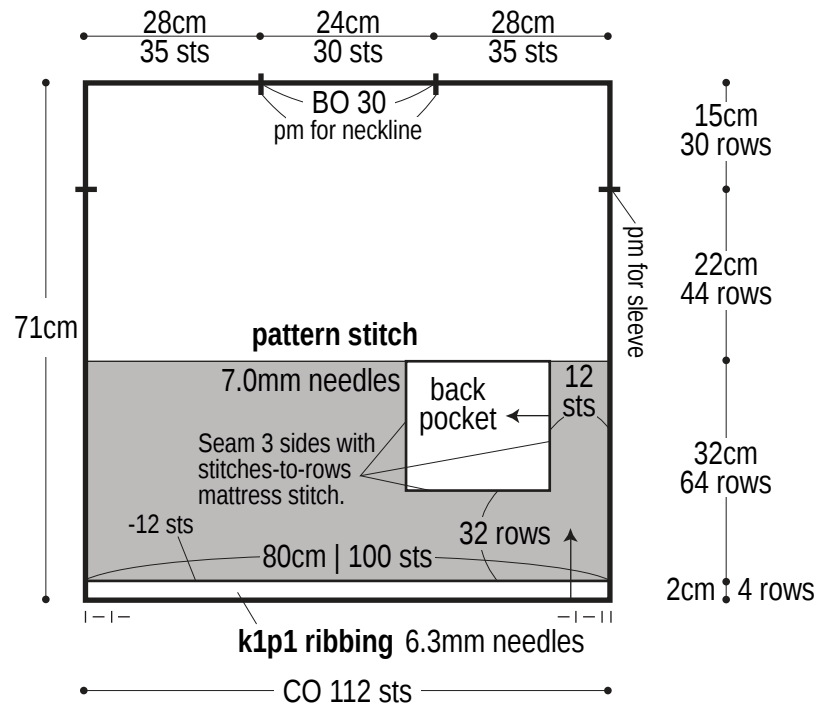
Sleeve (make 2): Seam shoulders with slip stitch seam. Pick up stitches around armhole; work sleeve in st st and then cuff in k1p1 ribbing. Bind off in pattern.

Finishing: Knit 2 pockets, then seam one each to front and back where indicated on schematic using stitches-to-rows mattress stitch. Seam sides and sleeve undersides with one continuous mattress stitch seam per side of body/arm.

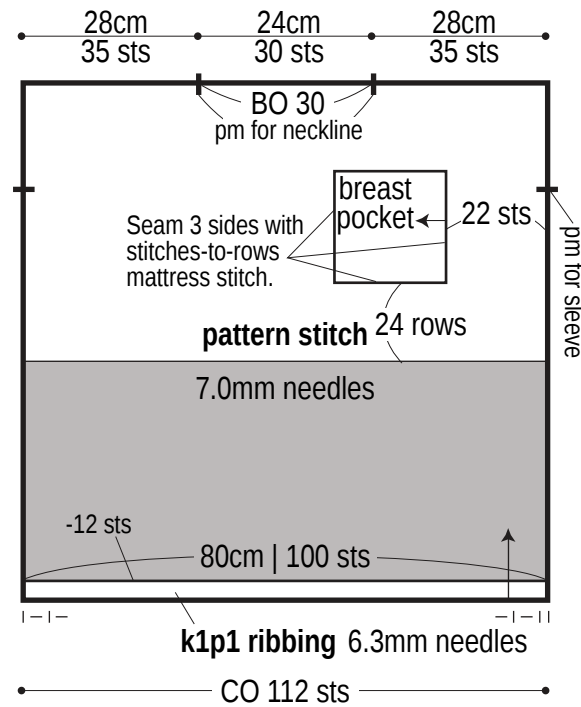
Abbreviations:

BO = bind off CO = cast on k = knit p = purl pm = place marker PU = pick up RE = row(s) even st st = stockinette stitch #-#-# = rows-stitches-times

Back

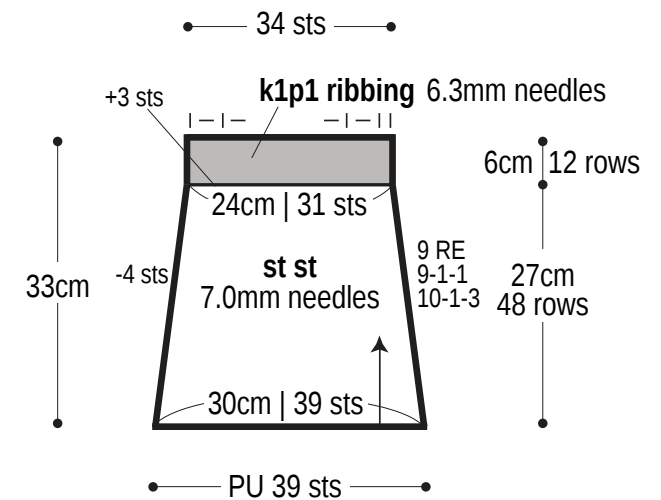


Front

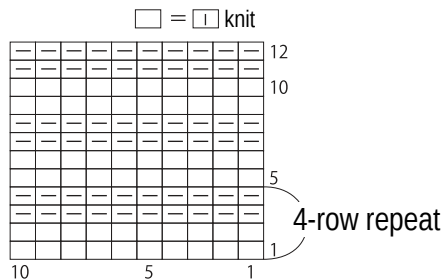


□ = color #3
■ = color #20

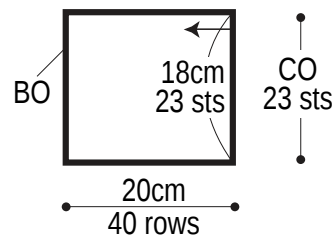
Sleeve



Pattern stitch



Back pocket



Breast pocket

