

219AW-05 Elena Simple Long Vest



Suggested yarn:

- Pierrot Yarns Elena [98% merino wool, 1% polyester, 1% nylon; 67 yds/61m per 1.1 oz./30g skein]; color #08 garnet, 11 skeins [330g]

Tools/Notions:

- 3.6mm (approx. US 4 or 5) and 4.2mm (approx. US 6 or 7) knitting needles or sizes necessary to achieve gauge

Finished measurements:

- bust 86cm/33.9"
- cross back width 47cm/18.5"
- back length 68cm/26.8"

Gauge (10cm/4" square):

- pattern stitch: 19 sts and 29 rows
- k2p2 ribbing: 23 sts and 29 rows

Gauge may vary according to individual knitting style. Change needle size if necessary to achieve gauge. Alternatively, rework pattern with your own gauge measurements.

Summary

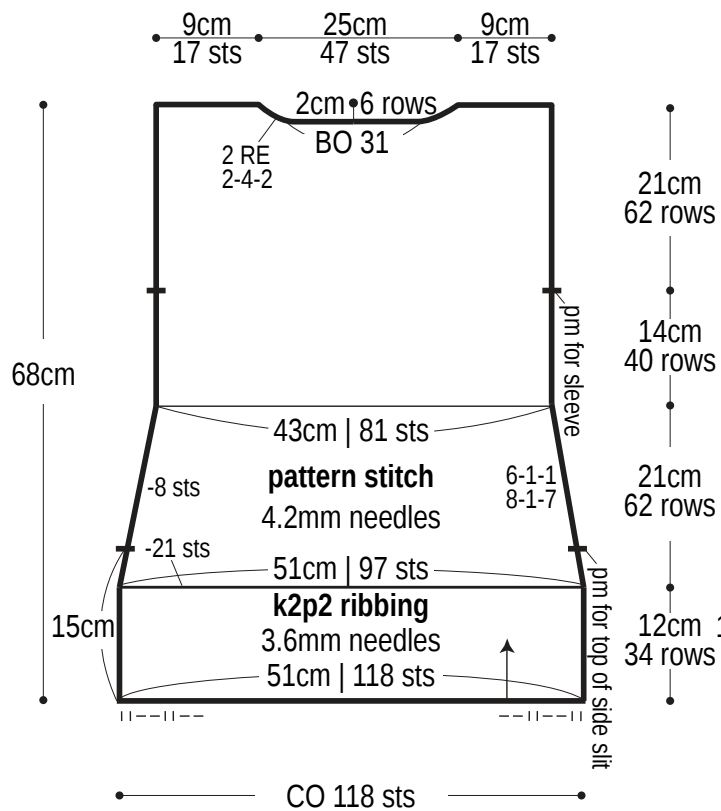
Body: Cast on with long-tail cast-on method. Work in k2p2 ribbing, then continue in pattern stitch.

Finishing: Seam shoulders with slip stitch seam. Pick up stitches around neckline; work collar in k2p2 ribbing. Bind off in pattern. Seam tip of V-neck to front where shown in finishing schematic. Seam each side from armhole marker to marker at top of side slit using mattress stitch. Pick up stitches around each armhole; work edging in k2p2 ribbing in the round. Bind off in pattern.

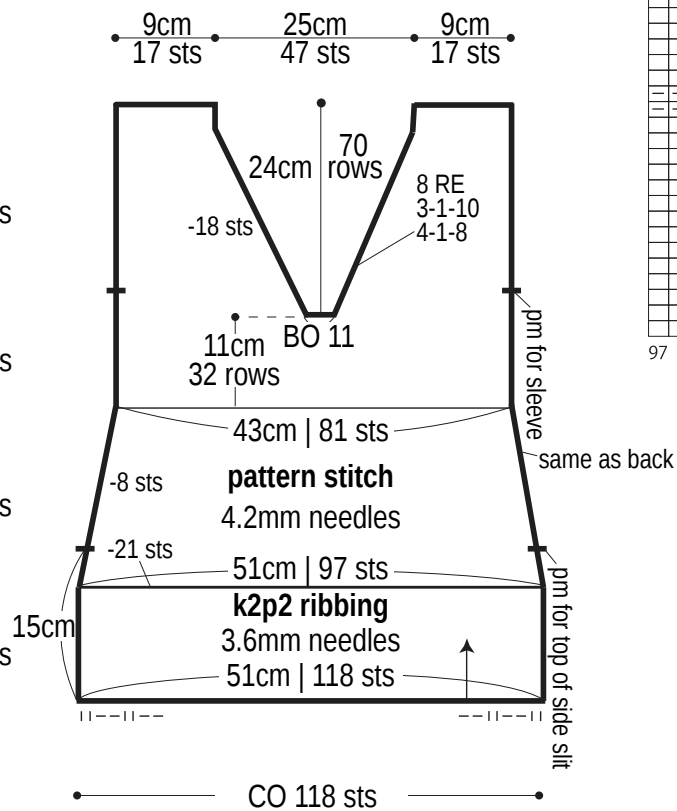
Abbreviations:

BO = bind off CO = cast on k = knit p = purl pm = place marker PU = pick up RE = row(s) even #-#-# = rows-stitches-times

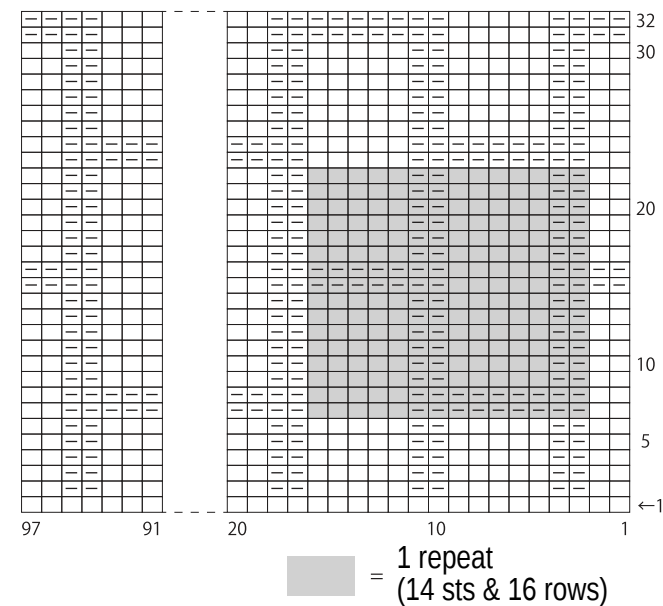
Back



Front



Pattern stitch



Finishing

