

219W-04 Whips Pullover



Suggested yarn:

- Pierrot Yarns Soft Merino Fingering [100% merino wool; 183 yds/167m per 1.4 oz./40g skein]; color #74 milk tea, 6 skeins [240g]
- Pierrot Yarns Whips [58% acrylic, 30% nylon, 12% wool; 175 yds/160m per 1.4 oz./40g skein]; color #13 sepia beige, 6 skeins [240g]

Tools/Notions:

- 6.0mm (US J) crochet hook or size necessary to achieve gauge

Finished measurements:

- bust 100cm/39.4"
- center back neck-to-cuff 72cm/28.3"
- back length 53cm/20.9"

Gauge (10cm/4" square):

- double crochet (US): 12 sts and 6.5 rows
- pattern stitch A: 15 sts and 6.5 rows
- pattern stitch B: 12.5 sts and 6.5 rows

Gauge may vary according to individual crochet style. Change hook size if necessary to achieve gauge. Alternatively, rework pattern with your own gauge measurements.

Summary

✧**Note 1:** Like all Japanese patterns, stitch counts given here for foundation chains do not include any chain sts needed for turning posts.

✧**Note 2:** Entire garment worked with 2 strands of yarn held together (1 strand of Soft Merino Fingering and 1 strand of Whips).

Body (front & back): Work foundation chain to begin, then work in dc and pattern stitch A.

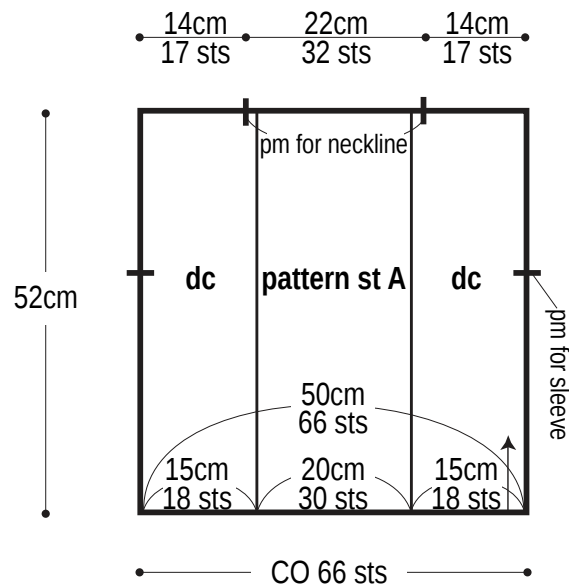
Sleeve (make 2): ch8 and bind off; save this chain for increase later. Work another foundation chain, then work in dc and pattern stitch B according to chart & schematic.

Finishing: Seam shoulders with chain seam (alternating chain st and slip st as needed to maintain pattern). Seam sleeves to body with slip stitch seam. Seam sides and sleeves with chain seam. Work dc in the round at each cuff. Work sc in the round at neckline and hem.

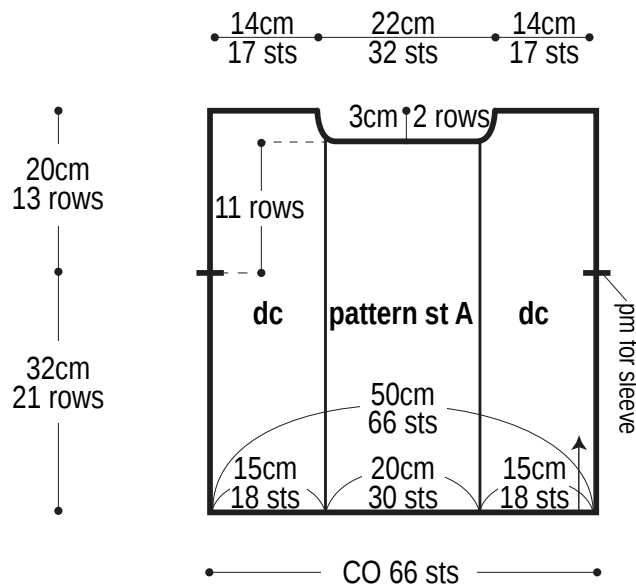
Abbreviations:

ch = chain dc = double crochet (US) fp = front post pm = place marker sc = single crochet (US)

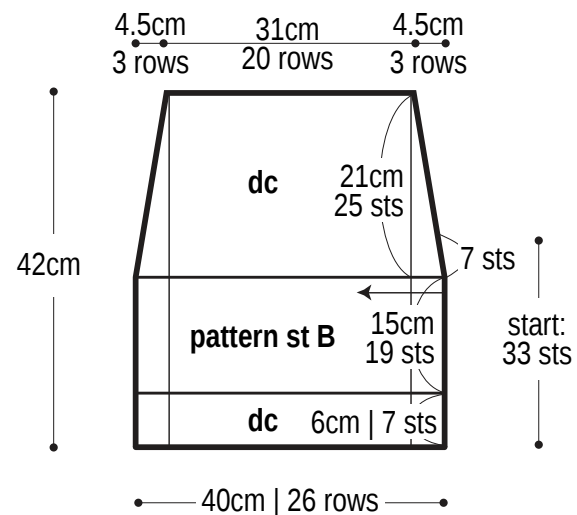
Back 6.0mm hook



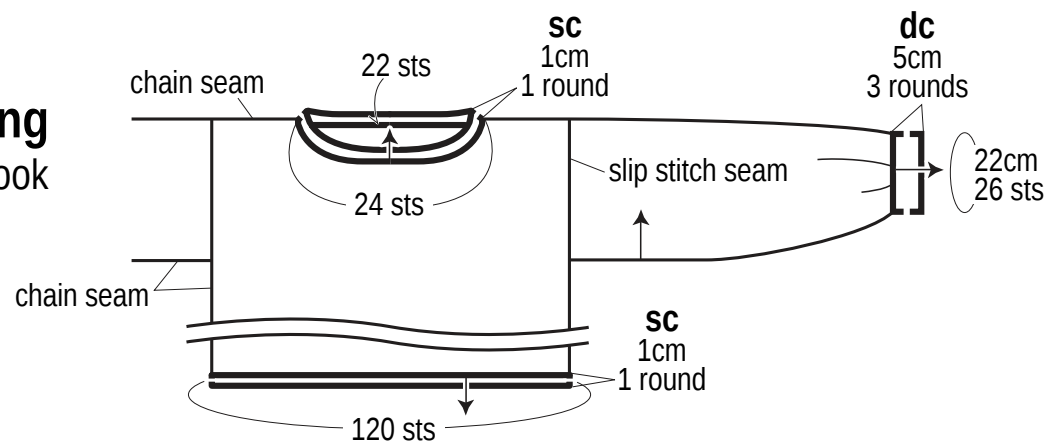
Front 6.0mm hook



Sleeve 6.0mm hook



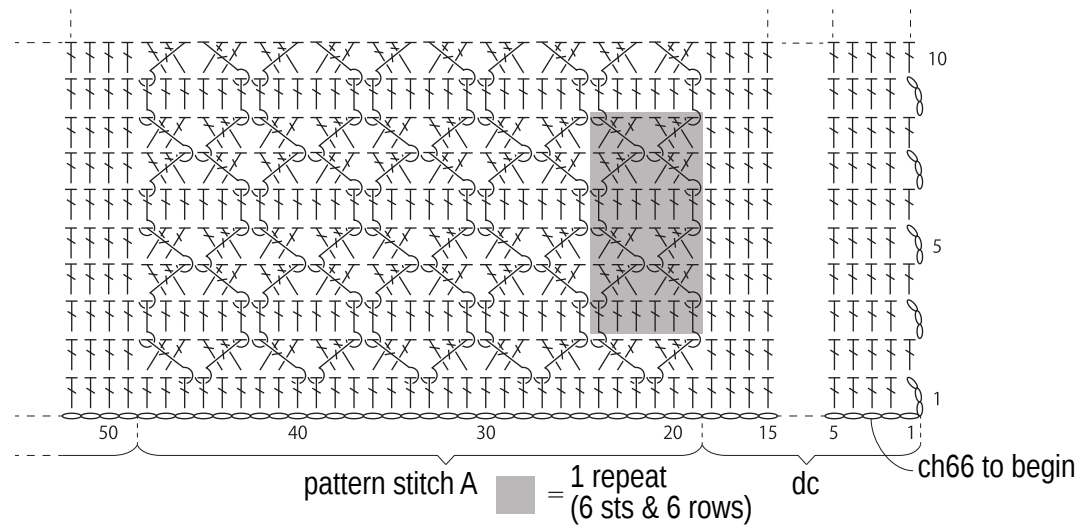
Finishing 6.0mm hook



Body

⌈ = fp dc

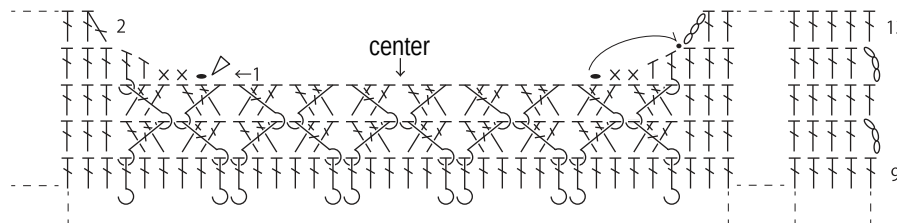
Use QR code on smartphone to view a video tutorial on fp dc.



Front neckline

◁ = join yarn

↶ = carry yarn



Sleeve

⊗ = 6-dc cluster stitch

Use QR code on smartphone to view a video tutorial on 6-dc cluster stitch.

