

219W-01 Watermark Pullover



Suggested yarn:

- Pierrot Yarns Puno [68% baby alpaca, 22% nylon, 10% extra fine merino wool; 120 yds/110m per 1.8 oz./50g skein]; color #1359 pale blue, 8 skeins [385g]

Tools/Notions:

- 6.0mm (US 10) and 6.6mm (approx. US 10½) knitting needles or sizes necessary to achieve gauge
- 2 cable needles

Finished measurements:

- bust 108cm/42.5"
- center back neck-to-cuff 74cm/29.1"
- back length 54cm/21.3"

Gauge (10cm/4" square):

- pattern stitch: 16 sts and 21.5 rows

Gauge may vary according to individual knitting style. Change needle size if necessary to achieve gauge. Alternatively, rework pattern with your own gauge measurements.

Summary

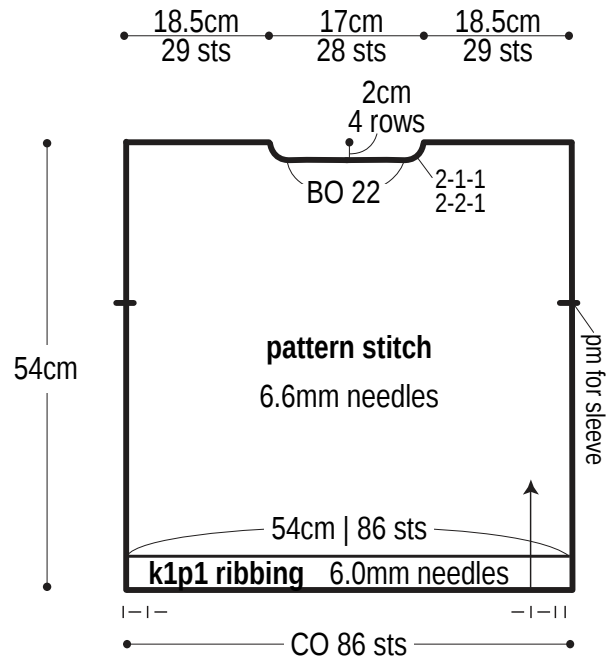
Body & sleeves: Cast on with long-tail cast-on method. Work in k1p1 ribbing, then continue in pattern stitch. For sleeve, bind off all stitches after completing sleeve.

Finishing: Seam sleeves with crochet slip stitch seam. Pick up stitches around neckline; work collar in k1p1 ribbing in the round. Seam sleeves to body with crochet slip stitch seam. Seam sides and sleeve undersides with one continuous mattress stitch side per side of body/sleeve.

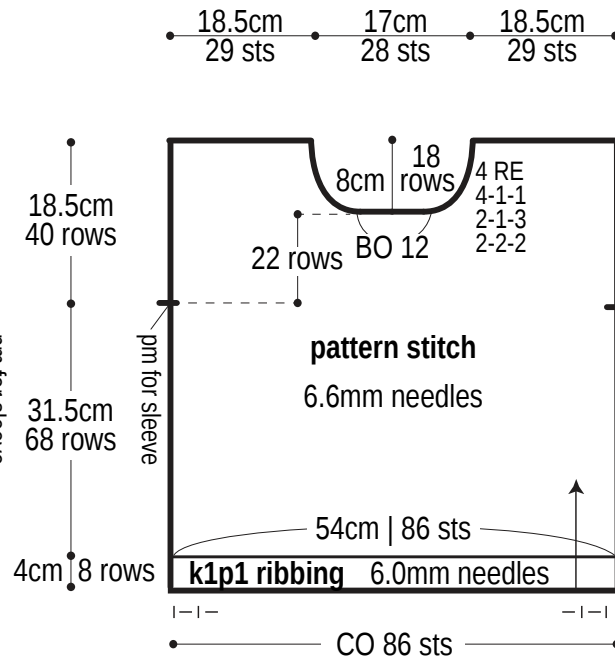
Abbreviations:

BO = bind off CO = cast on k = knit p = purl pm = place marker PU = pick up RE = row(s) even #-#-# = rows-stitches-times

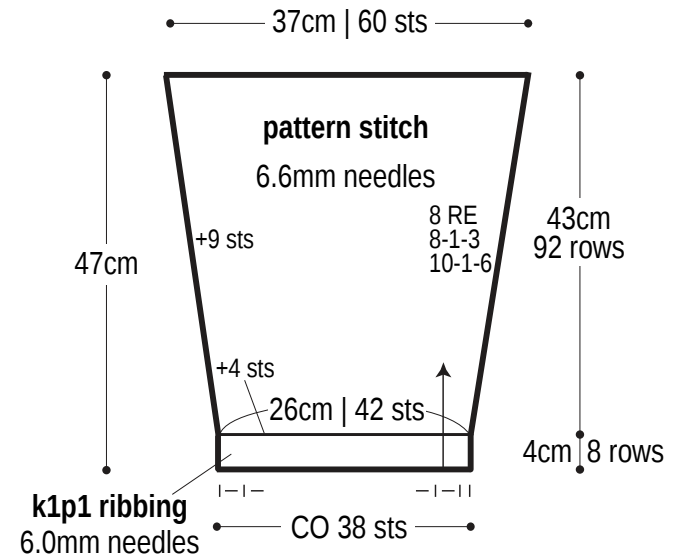
Back



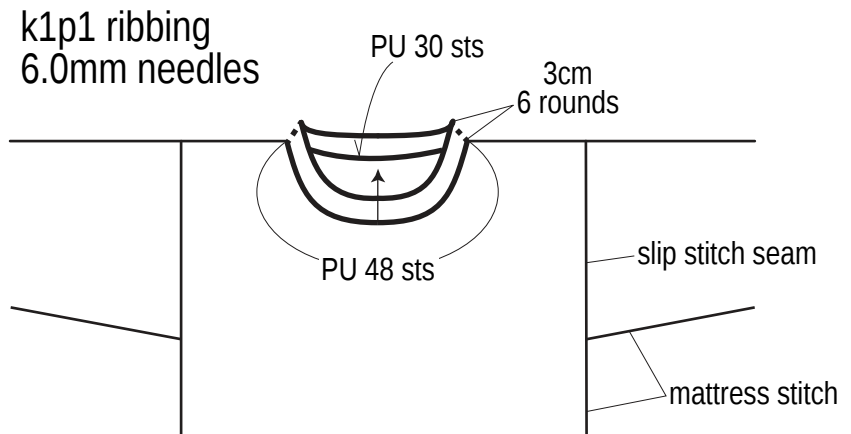
Front



Sleeve

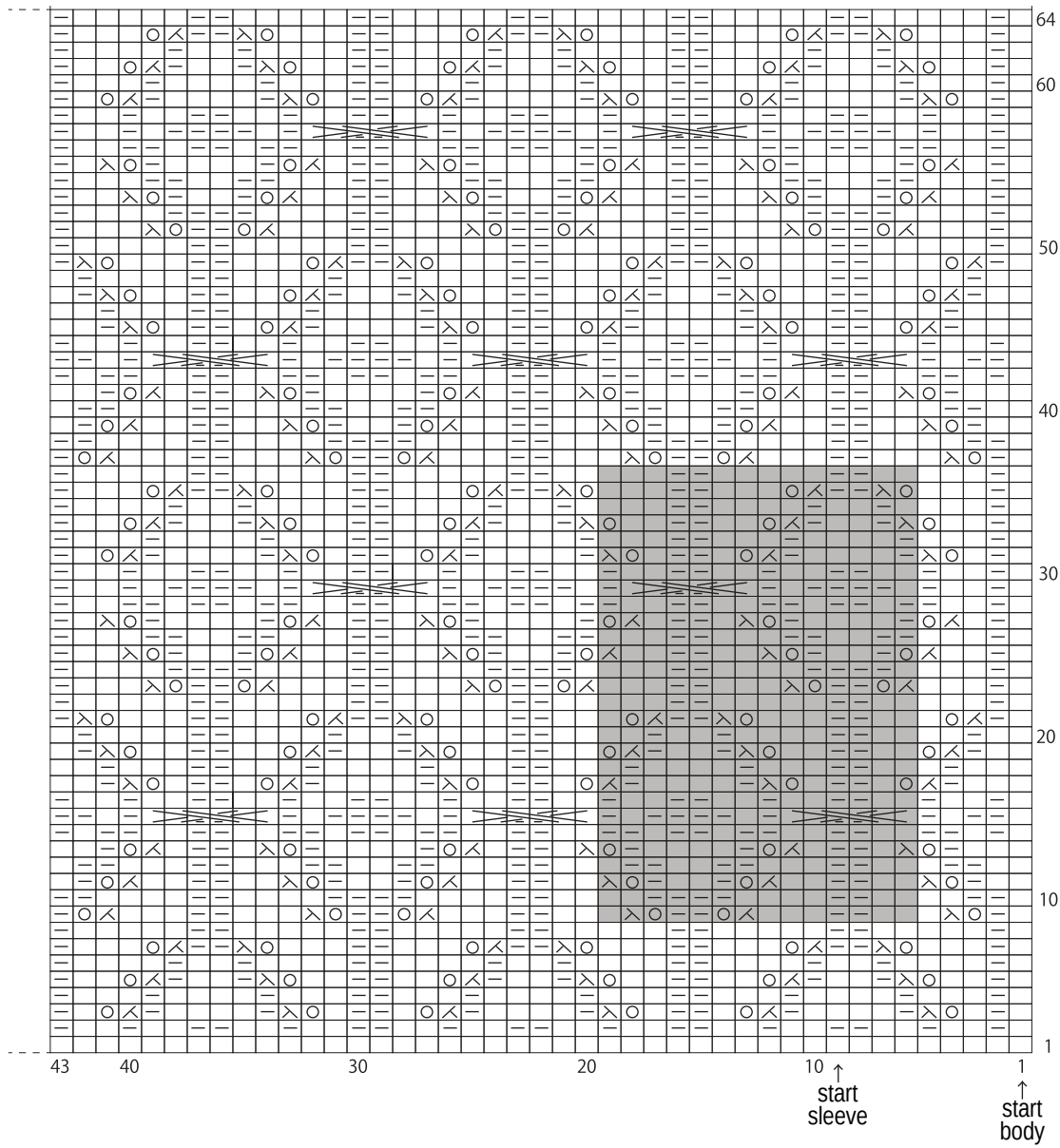



Finishing




Pattern stitch

□ = □ knit



 = Slip 2 sts knitwise to first cable needle and hold in front of work. Slip 2 sts purlwise to second cable needle and hold in back. k2, p2 from second cable needle, k2 from first cable needle.

 = 1 repeat (14 sts & 28 rows)

Use QR code on smartphone to view a video tutorial about how to work the cable stitch featured in this pattern.

