

# 219AW-14 Tilden Sweater



## Suggested yarn:

- Pierrot Yarns Junmo Namibuto2/Pure Wool [100% superwash wool; 79 yds/72m per 1.4 oz./40g skein];
  - color #202 shell pink, 1 skein [25g]
  - color #209 wine red, 1 skein [25g]
  - color #213 navy, 16 skeins [615g]

## Tools/Notions:

- 3.9mm (approx. US 6) and 4.5mm (US 7) knitting needles or sizes necessary to achieve gauge
- cable needle

## Finished measurements:

- chest 112cm/44.1"
- center back neck-to-cuff 80cm/31.5"
- back length 64.5cm/25.4"

## Gauge (10cm/4" square):

- pattern stitch: 21.5 sts and 27 rows

*Gauge may vary according to individual knitting style. Change needle size if necessary to achieve gauge. Alternatively, rework pattern with your own gauge measurements.*

## Summary

**Body (back & front):** Cast on with long-tail cast-on method. Work in striped k1p1 ribbing and then continue in pattern stitch.

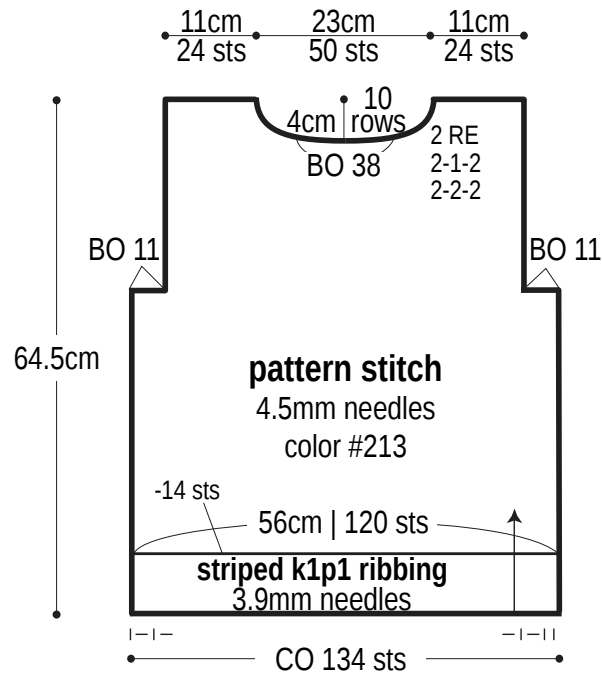
**Sleeve (make 2):** Cast on with long-tail cast-on method. Work in striped k1p1 ribbing and then continue in pattern stitch. Bind off.

**Finishing:** Seam shoulders with crochet slip stitch seam. Pick up stitches around neckline; work collar in striped k1p1 ribbing in the round. Seam sleeves to body with crochet slip stitch seam. Seam underarm gusset with stitches-to-rows mattress stitch. Seam sides and sleeves with one continuous mattress stitch seam per side of body/arm.

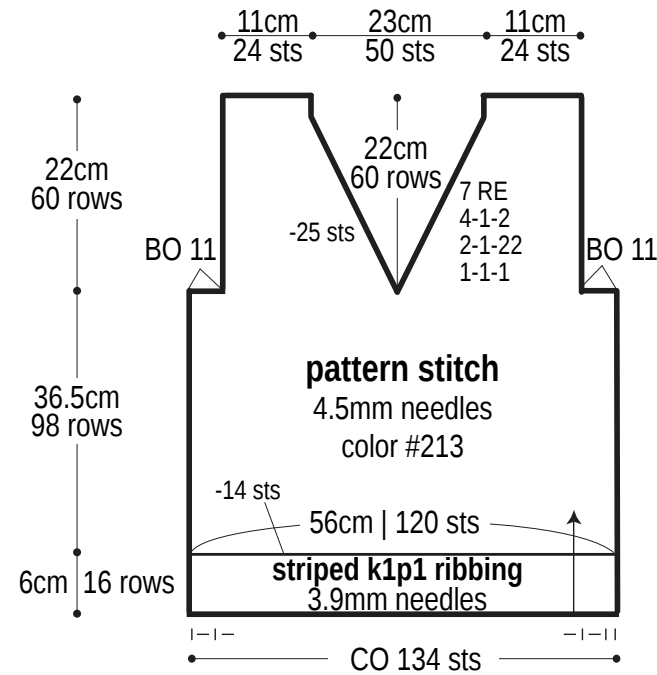
## Abbreviations:

BO = bind off      CO = cast on      k = knit      p = purl      PU = pick up      RE = row(s) even      #-#-# = rows-stitches-times

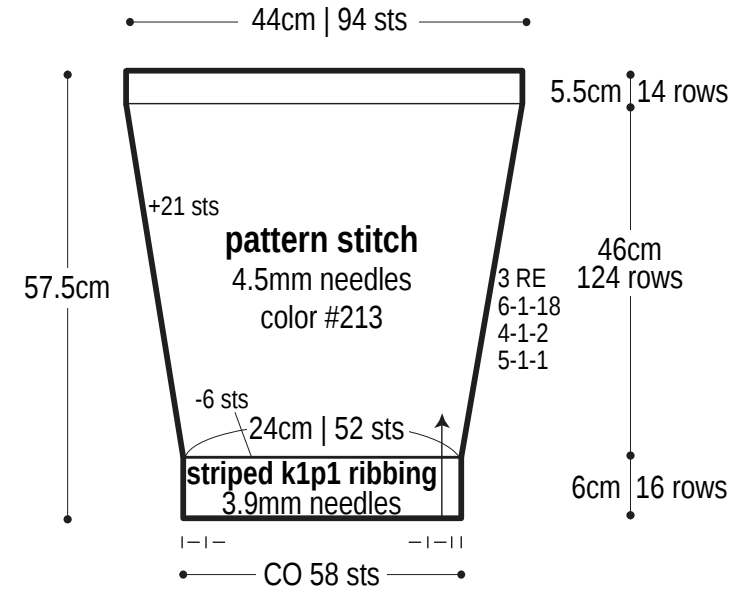
## Back



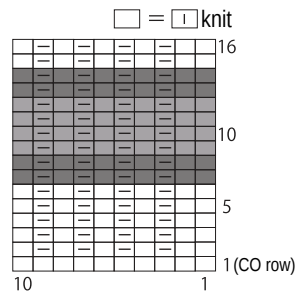
## Front



## Sleeve

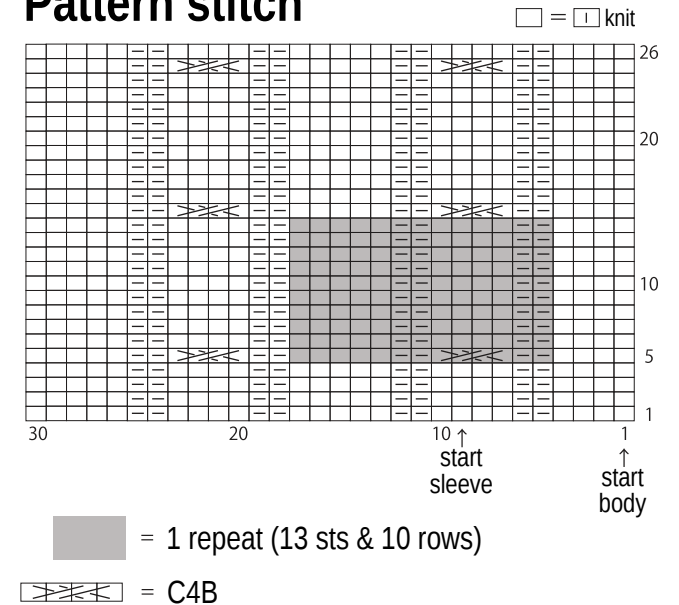


## Striped k1p1 ribbing



- = color #213
- = color #209
- = color #202

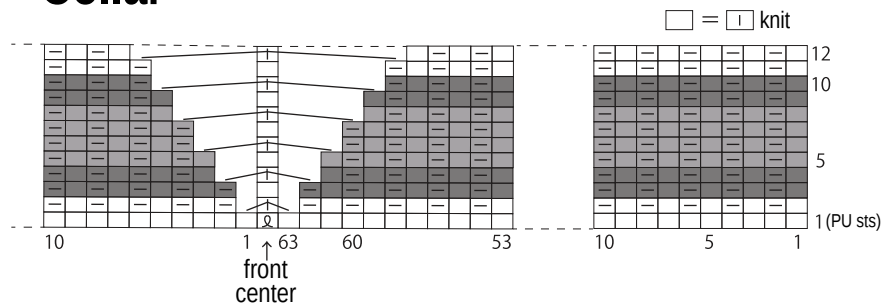
## Pattern stitch



- = 1 repeat (13 sts & 10 rows)

⌘ = C4B

## Collar



□ = lifted increase

□ = center double decrease  
(Slip 2 sts knitwise, k1,  
pass slipped sts over  
the knit stitch.)

□ = color #213

□ = color #209

□ = color #202

## Finishing: k1p1 ribbing

3.9mm needles

