

219AW-09 Argyle Sweater



Suggested yarn:

- Pierrot Yarns Macon [70% baby alpaca, 30% nylon; 80 yds/73m per 0.9 oz./25g skein];
 - color #21 off-white, 2 skeins [35g]
 - color #26 gray, 1 skein [15g]
 - color #28 black, 3 skeins [325g]
- Pierrot Yarns Junmo Gokubuto 2 [100% wool; 57 yds/52m per 1.4 oz./40g skein]; color #108 cardinal red, 1 skein [25g]
- Pierrot Yarns Julika [51% mohair, 34% nylon, 15% merino wool; 378 yds/346m per 1.1 oz./30g skein]; color #04 cassis red, 1 skein [5g]

Tools/Notions:

- 5.1mm (approx. US 8) and 5.7mm (approx. US 9) knitting needles or sizes necessary to achieve gauge

Finished measurements:

- bust 98cm/38.6"
- center back neck-to-cuff 73cm/28.7"
- back length 51.5cm/20.3"

Gauge (10cm/4" square):

- pattern stitches A, B & C: 13 sts and 19 rows

Gauge may vary according to individual knitting style. Change needle size if necessary to achieve gauge. Alternatively, rework pattern with your own gauge measurements.

Summary

✿**Note:** Entire garment worked with yarn held double.

Body (back & front): Cast on with long-tail cast-on method. Work in k1p1 ribbing, then continue in pattern stitches A & B (both of which are intarsia patterns).

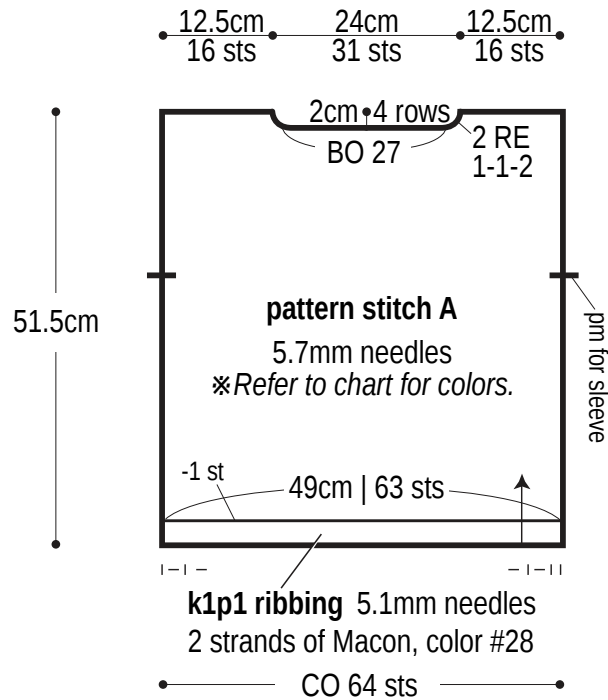
Sleeve (make 2): Cast on with long-tail cast-on method. Work in k1p1 ribbing, then continue in pattern stitch C. Bind off.

Finishing: Seam shoulders with crochet slip stitch seam. Pick up stitches around neckline; work collar in k1p1 ribbing in the round. Bind off in pattern. Seam sleeves to body with crochet slip stitch seam. Seam sides and sleeves with one continuous mattress stitch seam per side of body/arm.

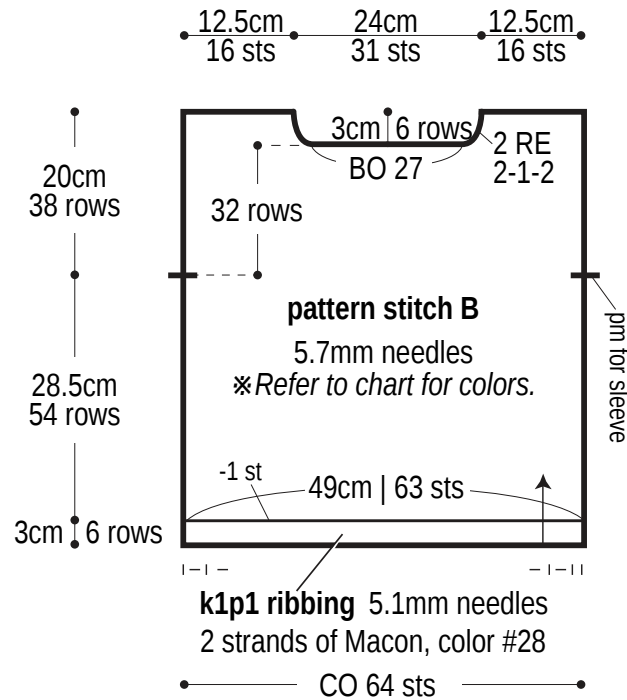
Abbreviations:

BO = bind off CO = cast on k = knit p = purl pm = place marker PU = pick up RE = row(s) even #-#-# = rows-stitches-times

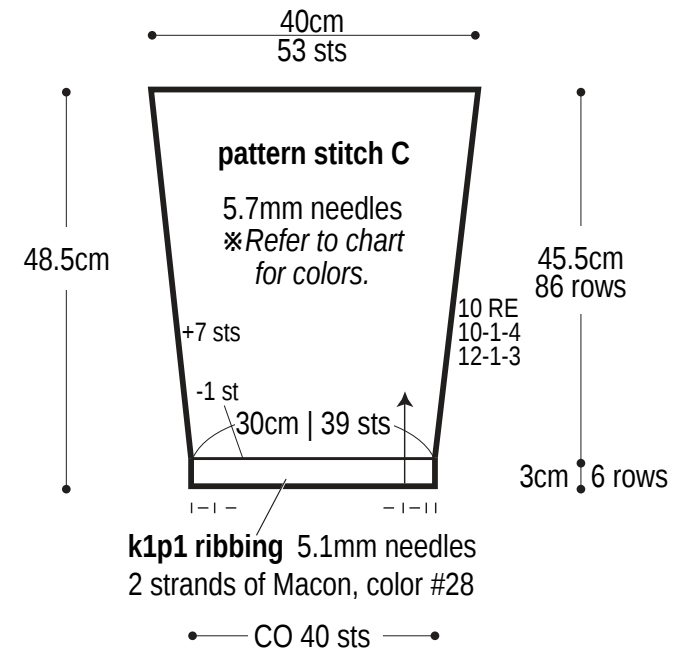
Back



Front

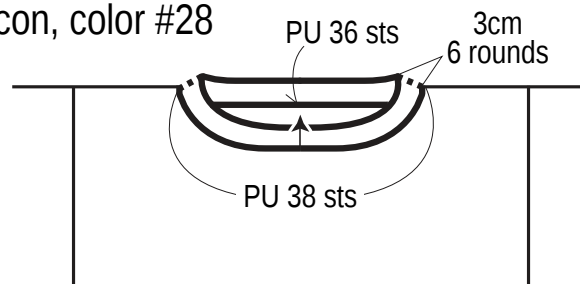


Sleeve



Collar: k1p1 ribbing

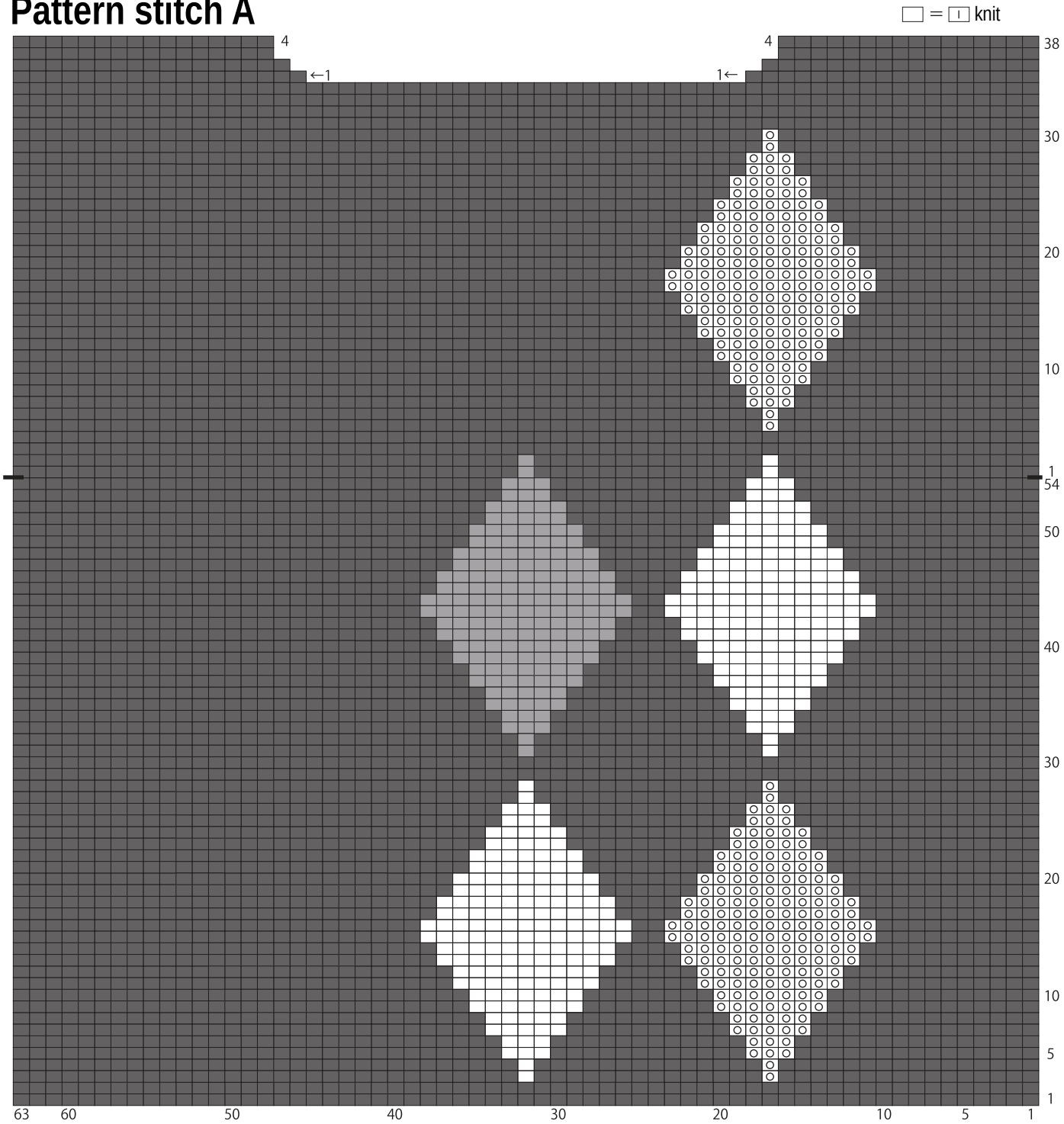
5.1mm needles
2 strands of Macon, color #28



Use QR code on
smartphone to view
a video tutorial on
how to work the
argyle pattern in the
intarsia method.



Pattern stitch A

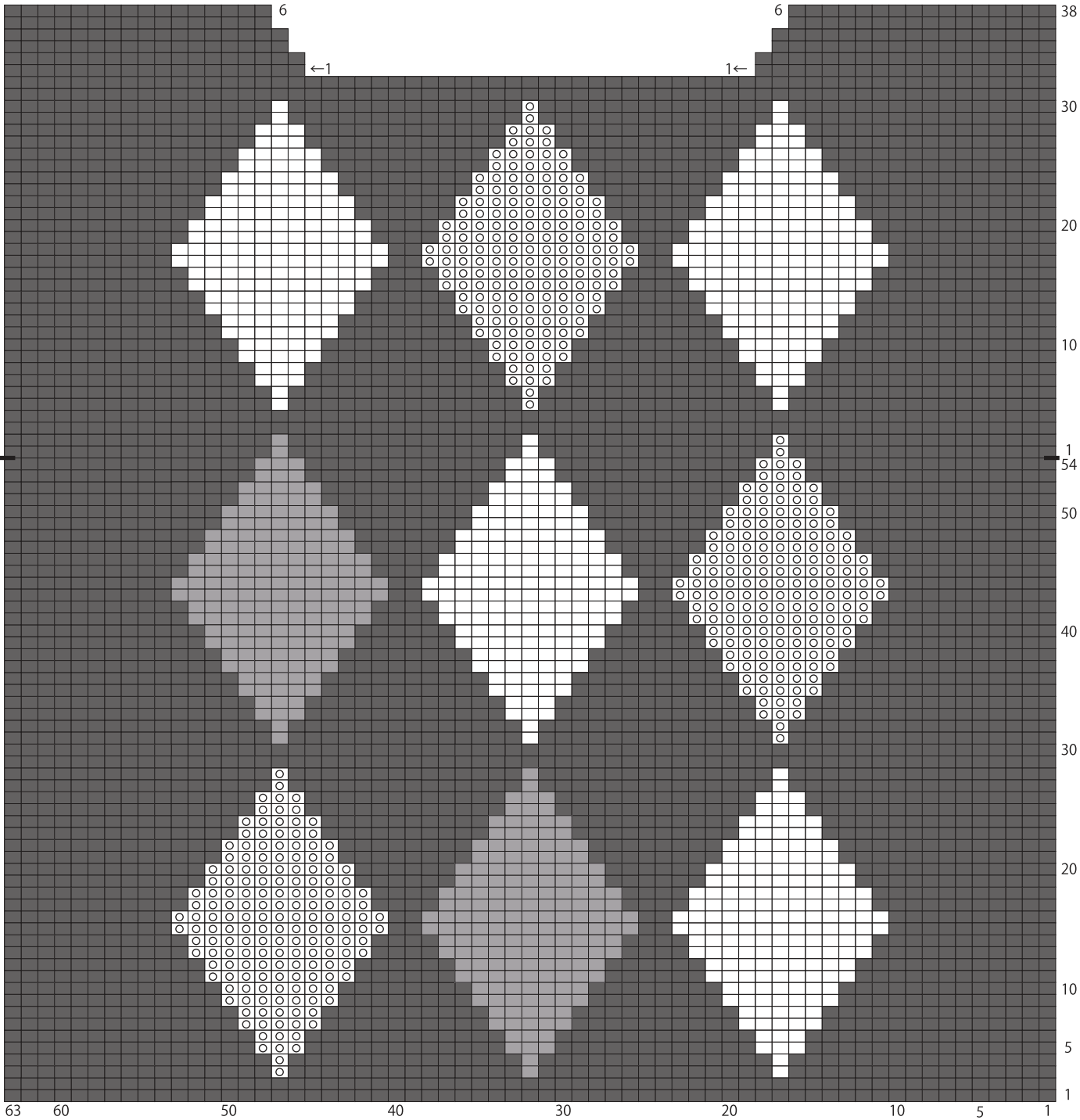


□ = □ knit

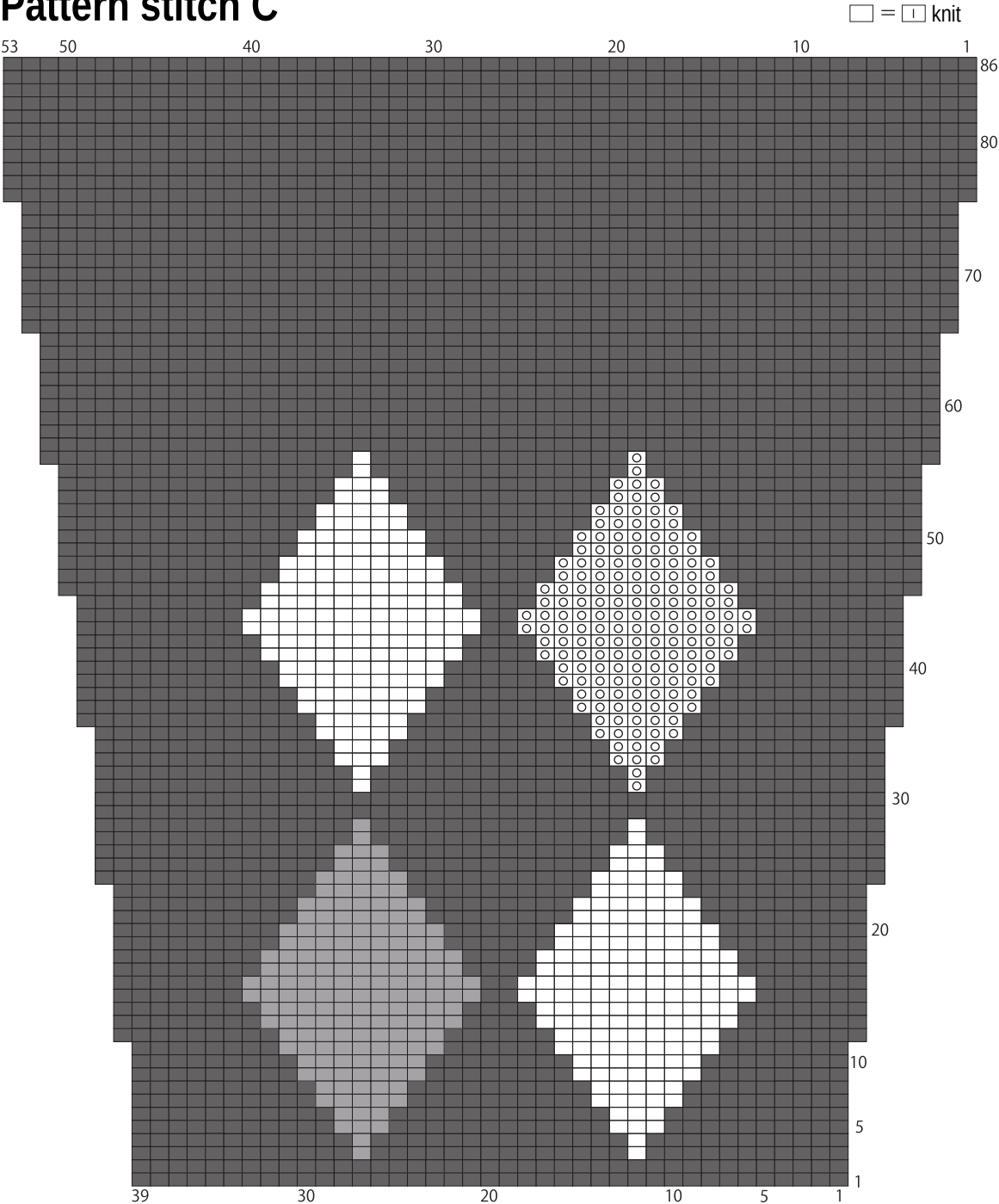
- = Macon, color #28
(2 strands)
- = Macon, color #21
(2 strands)
- = Macon, color #26
(2 strands)
- = Junmo Gokubuto 2 & Julika
(1 strand of each)

Pattern stitch B

□ = □ knit



Pattern stitch C



□ = □ knit

- = Macon, color #28 (2 strands)
- = Macon, color #21 (2 strands)
- = Macon, color #26 (2 strands)
- ◻ = Junmo Gokubuto 2 & Julika (1 strand of each)