

# 20-21-4 Aran Sweater



## Suggested yarn:

- Pierrot Yarns Junmo Chuboso / Pure Wool Fingering [40% merino wool, 60% punta wool; 164 yds/150m per 1.4 oz./40g skein];
  - color #319, 15 skeins [570g]
  - color #318, 8 skeins [285g]

## Tools/Notions:

- 4.5mm (US 7) and 5.1mm (approx. US 8) straight needles or sizes necessary to achieve gauge
- 4.5mm (US 7) circular knitting needle or size necessary to achieve gauge
- crochet hook for provisional cast-on and for seaming

## Finished measurements:

- bust 100cm/39.4"
- cross back width 40cm/15.7"
- back length 62cm/24.4"
- sleeve length 53cm/20.9"

## Gauge (10cm/4" square):

- pattern stitch: 22 sts and 27 rows

*Gauge may vary according to individual knitting style. Change needle size if necessary to achieve gauge. Alternatively, rework pattern with your own gauge measurements.*

## Summary

✳️**Note:** entire garment worked with 3 strands of yarn held together (2 strands of color #319 and 1 strand of color #318).

**Body & sleeves:** Cast on with crochet provisional cast-on method using a yarn in a contrasting color for the crochet chain. Work in pattern stitch, taking note to mark where center of pattern is on the stitch chart.

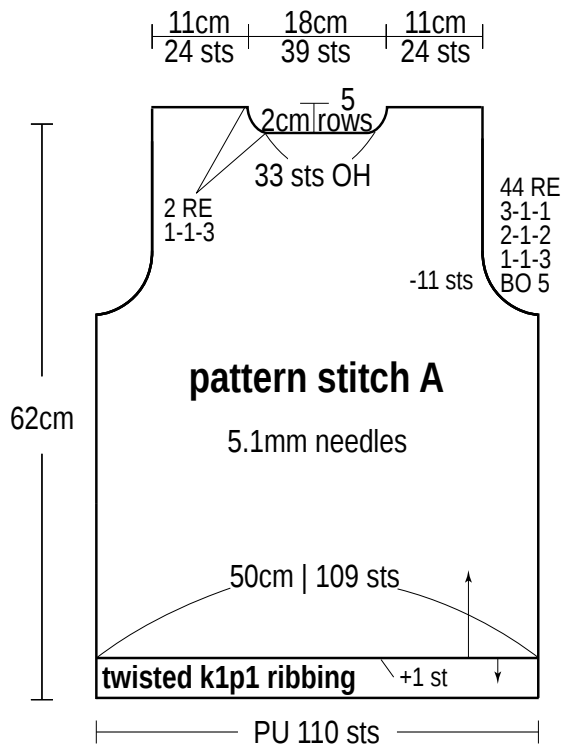
**Collar:** Seam shoulders with crochet slip stitch seam. Pick up stitches around neckline; work collar in twisted k1p1 ribbing in the round. Bind off using 1x1 tubular bind-off method.

**Finishing:** Remove provisional cast-on edge from hem and cuffs, respectively. Work twisted k1p1 ribbing. Seam sides and sleeve undersides with mattress stitch. Seam sleeves to body with crochet slip stitch seam.

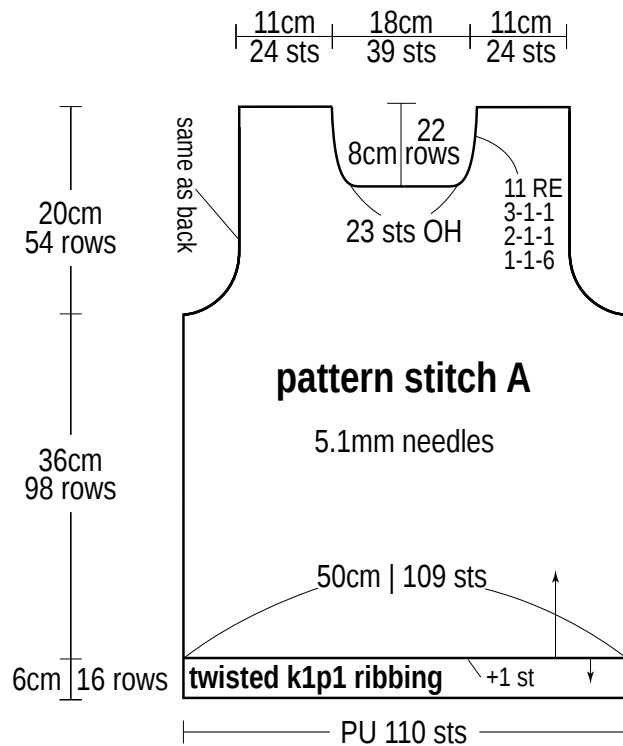
## Abbreviations:

BO = bind off  
CO = cast on  
k = knit  
OH = on hold (that is, place on stitch holder)  
p = purl  
PU = pick up  
RE = row(s) even  
#-#-# = rows-stitches-times

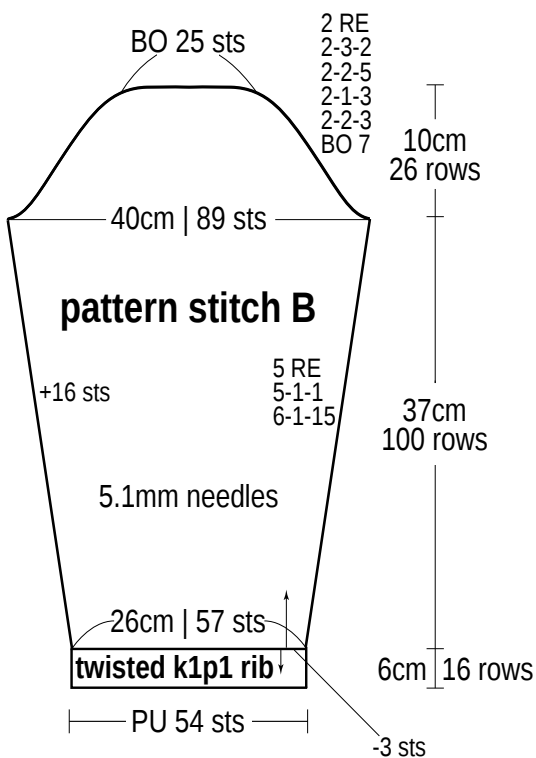
## Back



## Front

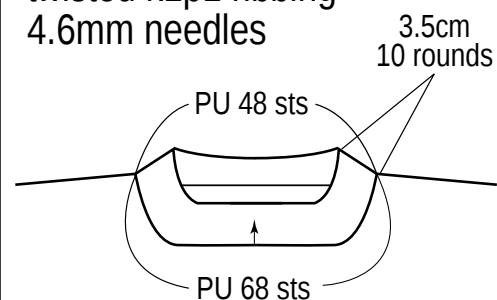


## Sleeve

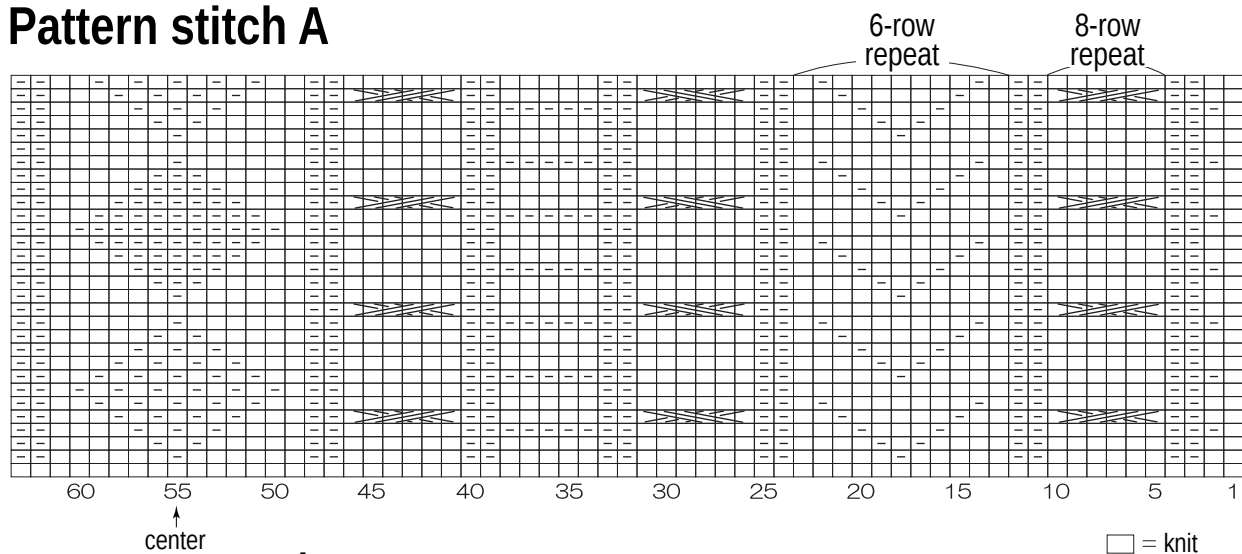


### Collar: neckline edging

twisted k1p1 ribbing  
4.6mm needles

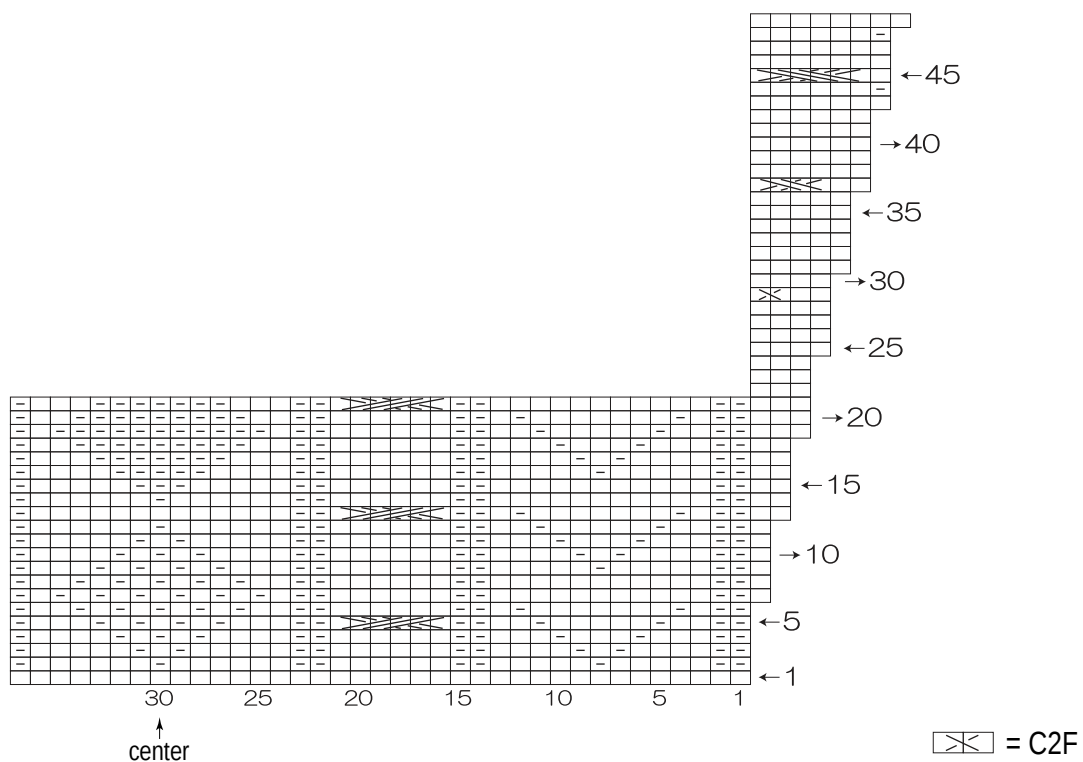


## Pattern stitch A



❖ **Note:** Be sure to reverse the pattern stitch to the left of center, including reversing the direction of the cable crossings.

## Pattern stitch B



❖ **Note:** As for pattern stitch A, be sure to reverse pattern stitch to left of center (including cable stitches).