

# 219AW-17 Elmer Headband, Legwarmers & Haramaki



## Suggested yarn:

- Pierrot Yarns Elmer [80% wool, 20% silk; 175 yds/160m per 1.4 oz./40g skein];
  - headband: color #04 flamingo pink, 1 skein [25g]
  - legwarmers: color #01 powder beige, 3 skeins [95g]
  - haramaki: color #01 powder beige, 2 skeins [75g]

## Tools/Notions:

- 2.7mm (approx. US 2) and 3.3mm (approx. US 3) knitting needles or sizes necessary to achieve gauge
- 3.0mm (approx. US C or D) crochet hook or size necessary to achieve gauge

## Finished measurements:

- Please refer to schematics.

## Gauge (10cm/4" square):

- pattern stitch B: 27.5 sts and 35.5 rows

*Gauge may vary according to individual knitting style. Change needle size if necessary to achieve gauge. Alternatively, rework pattern with your own gauge measurements.*

## Summary

**Headband:** Cast on with long-tail cast-on method. Work in pattern stitch A. Bind off. Twist the fabric once as shown in finishing schematic, then seam cast-on edge to bind-off edge with right sides facing each other using whipstitch.

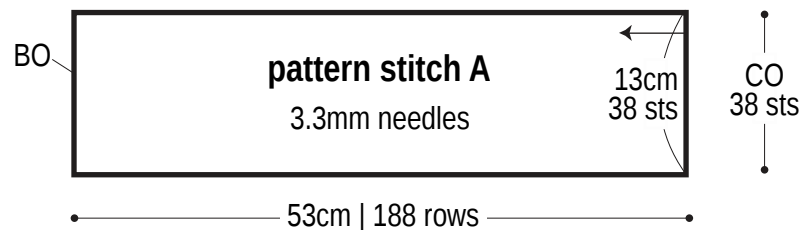
**Legwarmer (make 2):** Cast on with long-tail cast-on method. Work in k1p1 ribbing, then pattern stitch B, then k1p1 ribbing again. Bind off in pattern. Seam sides together, forming a tube, using mattress stitch.

**Haramaki:** Cast on with long-tail cast-on method. Work in pattern stitch B and then in k1p1 ribbing. Bind off in pattern. Seam sides together, forming a tube, using mattress stitch. Crochet a cord, then thread it through the ribbing and tie in a bow knot.

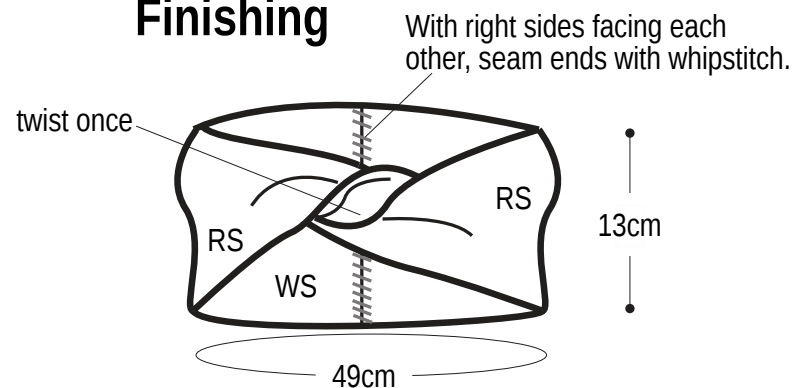
## Abbreviations:

BO = bind off    ch = chain stitch    CO = cast on    k = knit    p = purl    RS = right side    WS = wrong side

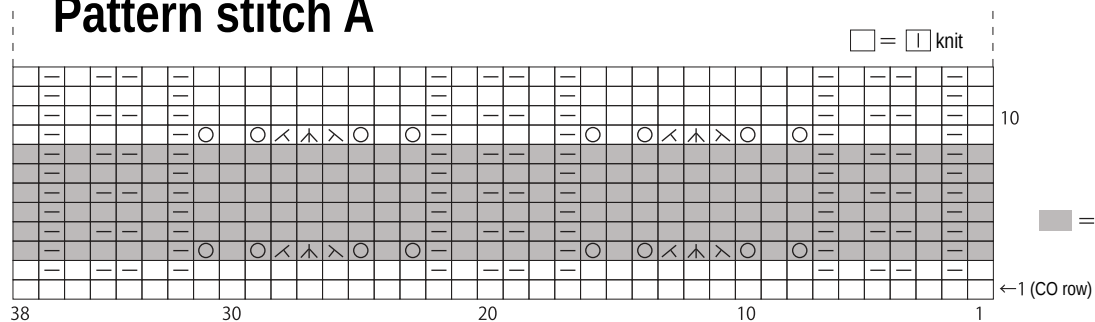
## Headband color #04



## Finishing

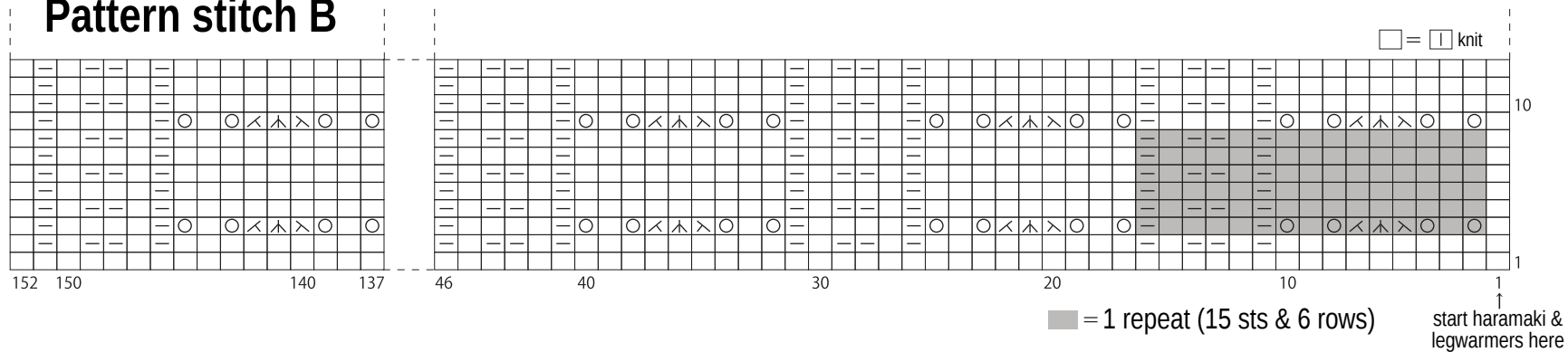


## Pattern stitch A



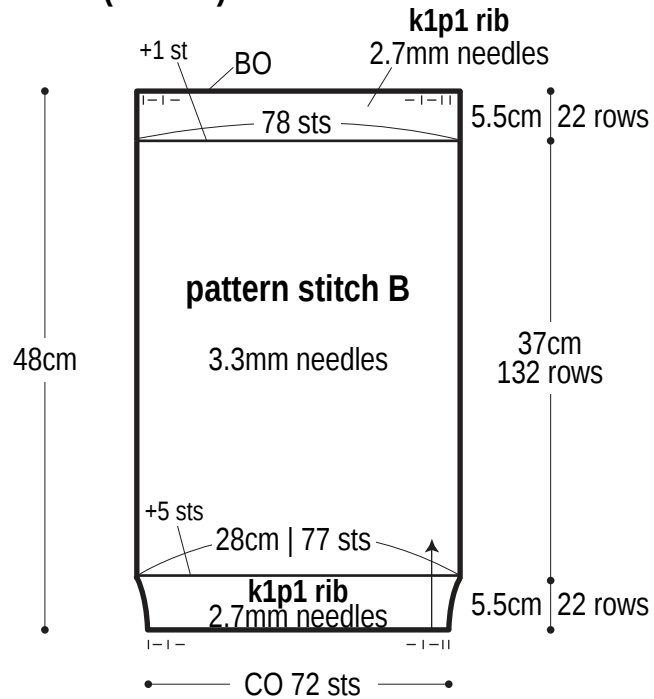
⊠ = center double decrease (k2 together knitwise, k1, pss0)

## Pattern stitch B

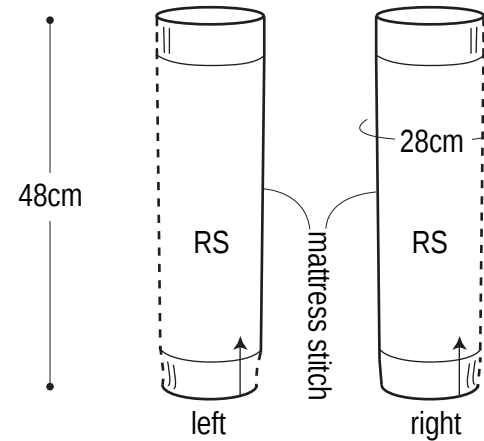


## Legwarmer (make 2)

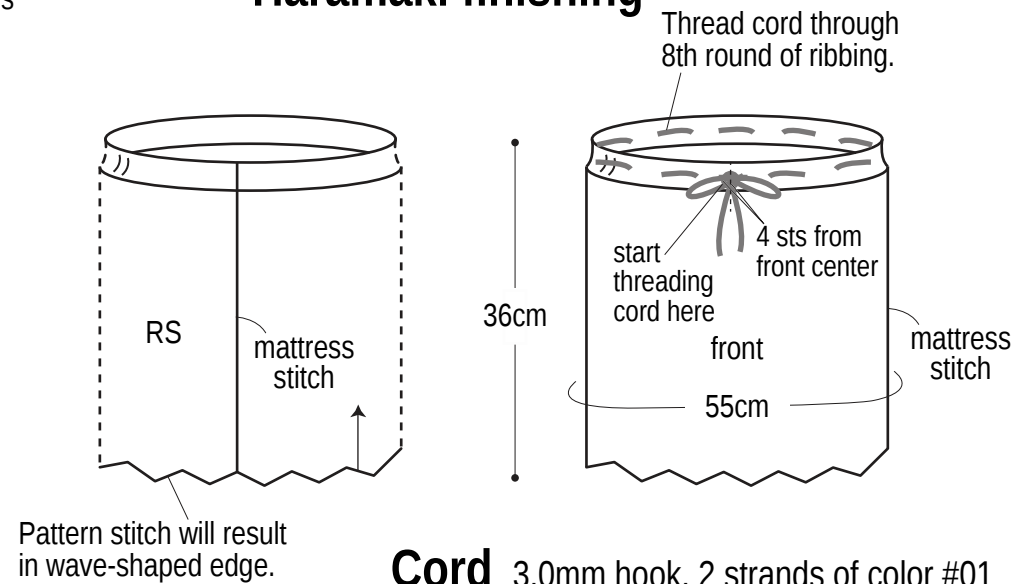
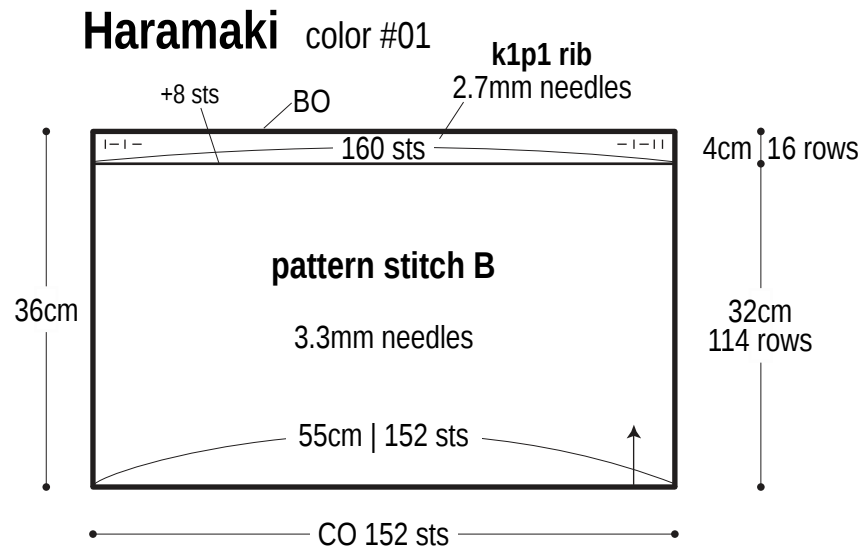
color #01



## Legwarmer finishing



## Haramaki finishing



**Cord** 3.0mm hook, 2 strands of color #01

tie knot at each edge with both strands

