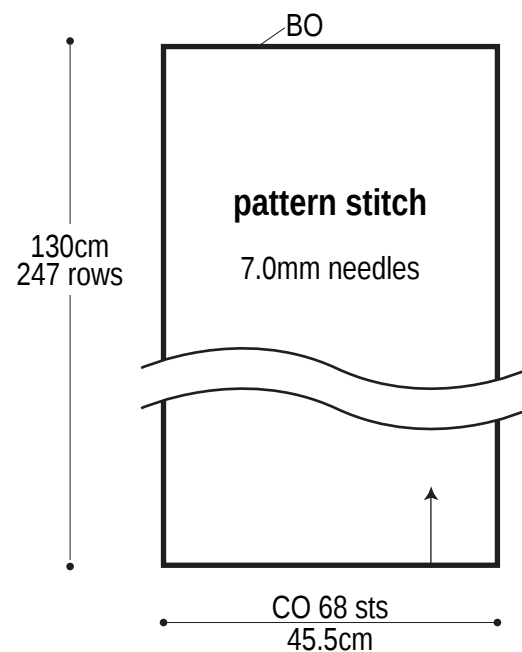
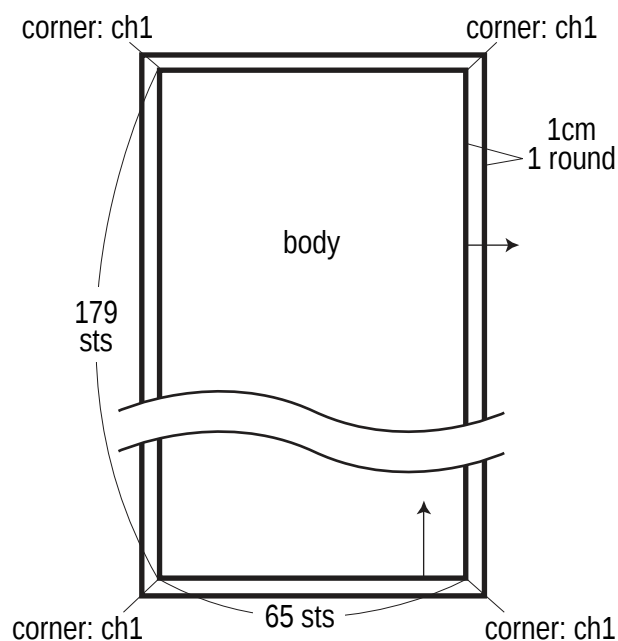


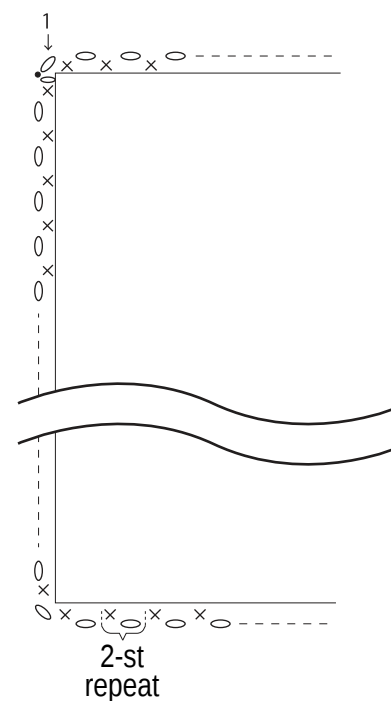
## Body of shawl





## Edging 6.0mm hook

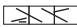


## Edging chart

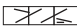


 = C2F

 = C2B

 = C3Fp

(Slip 2 onto cable needle & hold in front; p1, k2 from cable needle.


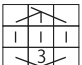
 = C3Bp

(Slip 1 onto cable needle & hold in back; k2, p1 from cable needle.

 = C6F

 = C6B

 = C4F

 =  = 3-st, 3-row bobble stitch

Use QR code to view a video tutorial about how to work C3Fp cable st.



Use QR code to view a video tutorial about how to work C3Bp cable st.

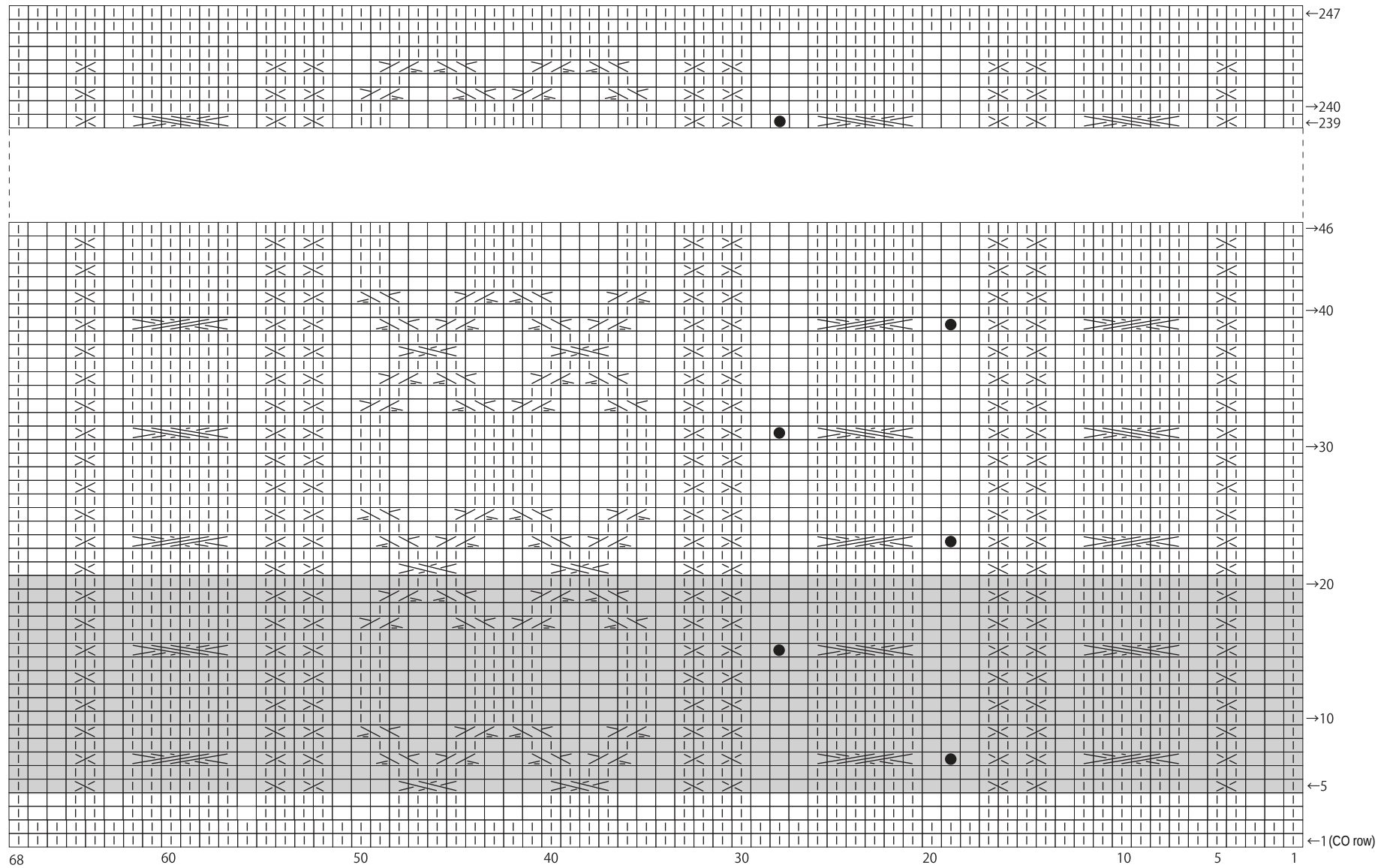


Use QR code to view a video tutorial about how to work bobble stitch. (Note that video shows a 3-st, 5-row bobble, but the method is the same.



# Pattern stitch

□ = □ purl



■ = 16-row repeat

# 219AW-02 Modern Shawl



## Suggested yarn:

- Pierrot Yarns Leclair [70% merino wool, 30% lambswool; 39 yds/36m per 1.4 oz./40g skein]; color #15 mauve gray, 15 skeins [595g]

## Tools/Notions:

- 7.0mm (between US 10½ and 11) knitting needles or size necessary to achieve gauge
- 6.0mm (US J) crochet hook or size necessary to achieve gauge
- cable needle

## Finished measurements:

- width 47.5cm/18.7"
- length 132cm/52.0"

## Gauge (10cm/4" square):

- pattern stitch: 15 sts and 19 rows

*Gauge may vary according to individual knitting style. Change needle size if necessary to achieve gauge. Alternatively, rework pattern with your own gauge measurements.*

## Summary

**Body of shawl:** Cast on with long-tail cast-on method. Work in pattern stitch. Bind off. ???.

**Finishing:** Crochet 1 round of edging around out edges of shawl.

## Abbreviations:

BO = bind off  
ch = chain stitch  
CO = cast on  
k = knit  
p = purl