

317cam Carta Cami



Suggested yarn:

- Pierrot Yarns Carta [90% cotton, 10% silk; 133 yds/122m per 1.4 oz./40g skein]; color #57 corn cream, 6 skeins [210g]

Tools/Notions:

- 3.0 (US 2½) and 3.3mm (approx. US 3) knitting needles or sizes necessary to achieve gauge

Finished measurements:

- bust 96cm/37.8"
- back length 58.5cm/23.0"

Gauge (10cm/4" square):

- moss stitch: 26 sts and 32 rows
- k1p1 ribbing (with smaller needles): 30 sts and 35 rows

Gauge may vary according to individual knitting style. Change needle size if necessary to achieve gauge. Alternatively, rework pattern with your own gauge measurements.

Summary

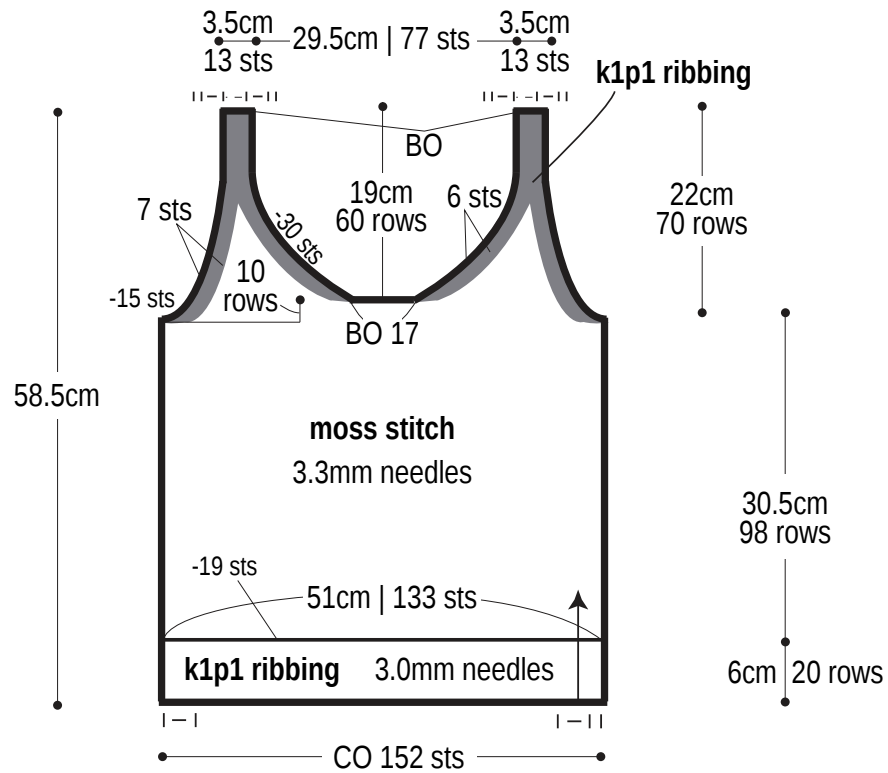
Body: Cast on with long-tail cast-on method. Work in k1p1 ribbing. Continue in moss stitch, decreasing on first row of seed stitch as shown in schematic. Refer to charts for shaping of armholes and neckline. Bind off in pattern.

Finishing: Seam sides with mattress stitch. Seam shoulders with whipstitch.

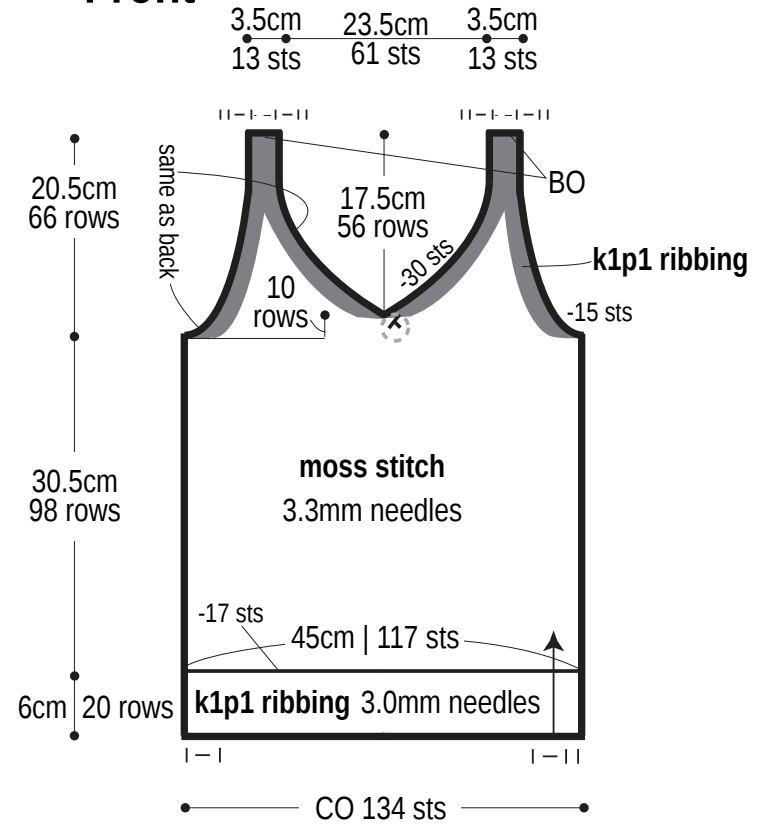
Abbreviations:

BO = bind off
CO = cast on
k = knit
p = purl

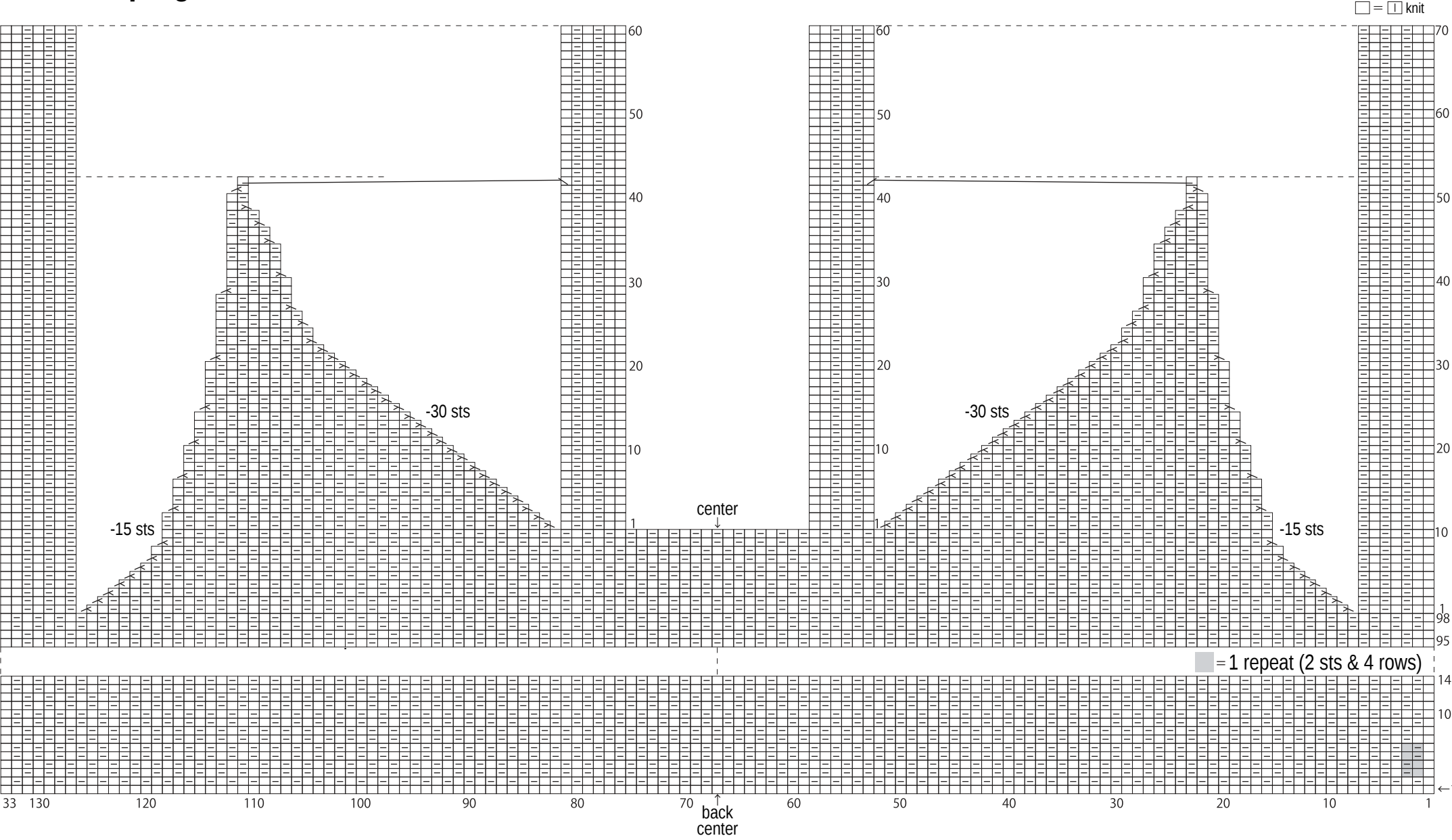
Back



Front



Back shaping



Front shaping

