

1256bsw Rocco Botanical Ballet Pullover



Suggested yarn:

- Pierrot Yarns Rocco Botanical [100% organic cotton; 87 yds/80m per 1.1 oz./30g skein]; color #02 strawberry, 12 skeins [360g]

Tools/Notions:

- 3.0mm (approx. US C or D) crochet hook or size necessary to achieve gauge
- 3.0mm (US 2½) knitting needles or size necessary to achieve gauge

Finished measurements:

- bust 98cm/38.6"
- center back neck-to-cuff 57.5cm/22.6"
- back length 51cm/20.1"

Gauge (10cm/4" square):

- pattern stitch: 26.5 sts and 11 rows

Gauge may vary according to individual crochet style. Change hook size if necessary to achieve gauge. Alternatively, rework pattern with your own gauge measurements.

Summary

✳️**Note:** Like all Japanese patterns, stitch counts given here for foundation chains do not include any chain sts needed for turning posts.

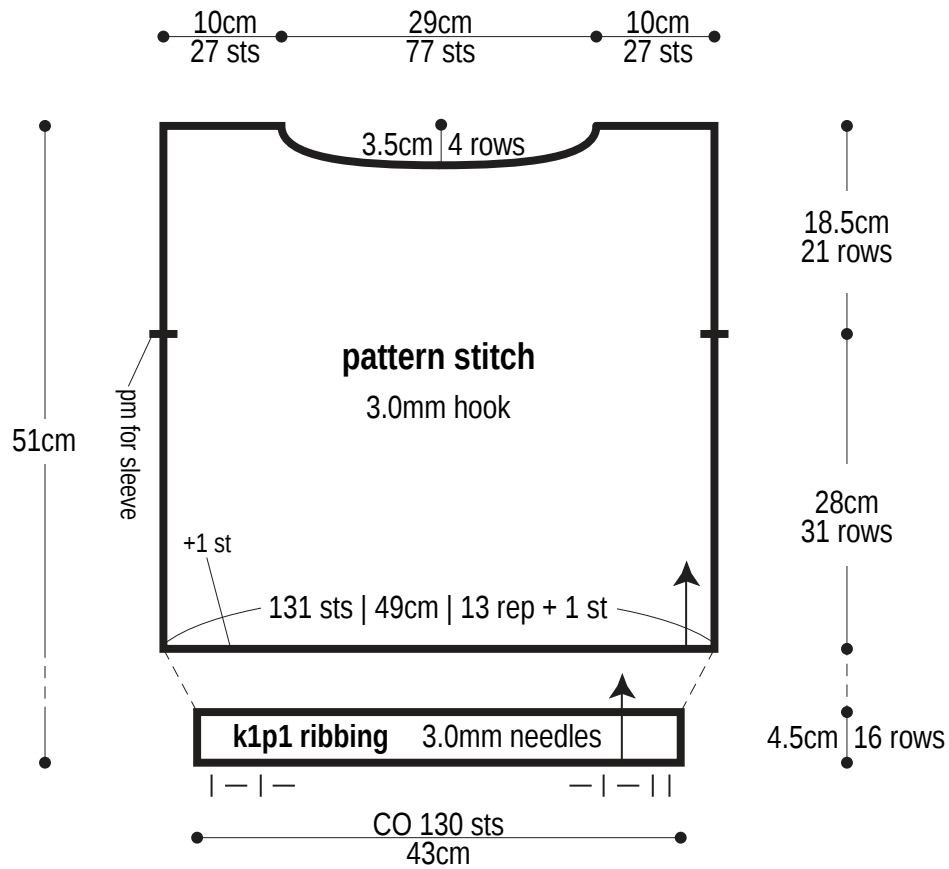
Body & sleeves (make 2 of each): With knitting needles, cast on with long tail cast-on method. Work in k1p1 ribbing, then bind off in pattern. Referring to schematic and chart, begin crocheting into bind-off edge of ribbing. Work in pattern stitch.

Finishing: Seam shoulders with chain seam (alternating chain st and slip st as needed to maintain pattern). Seam sleeves to body with slip stitch. Seam sides and sleeve undersides with sc seam, but seam the ribbing section with mattress stitch instead. With knitting needles, pick up stitches around neckline; work collar in k1p1 ribbing in the round. Bind off in pattern.

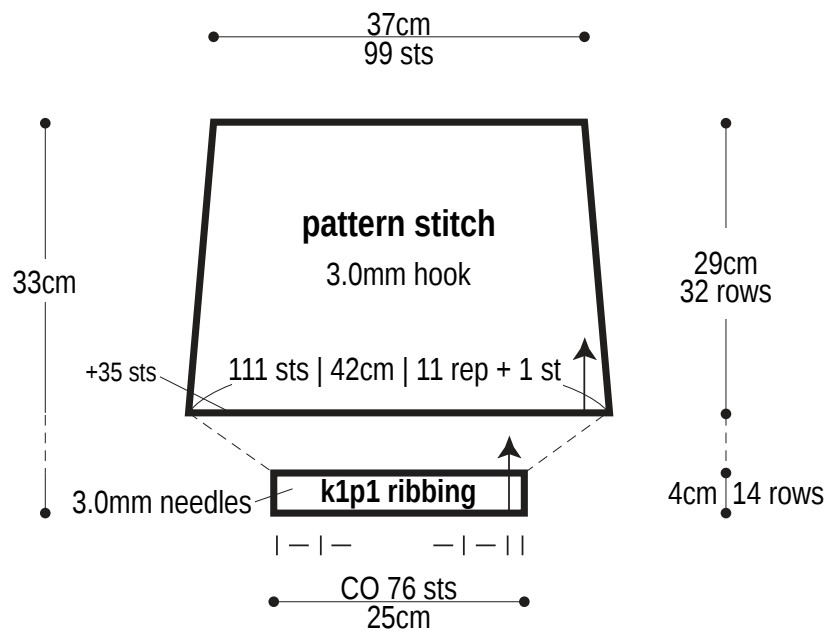
Abbreviations:

k = knit
p = purl
pm = place marker
PU = pick up
rep = pattern repeat(s)
sc = single crochet (US)

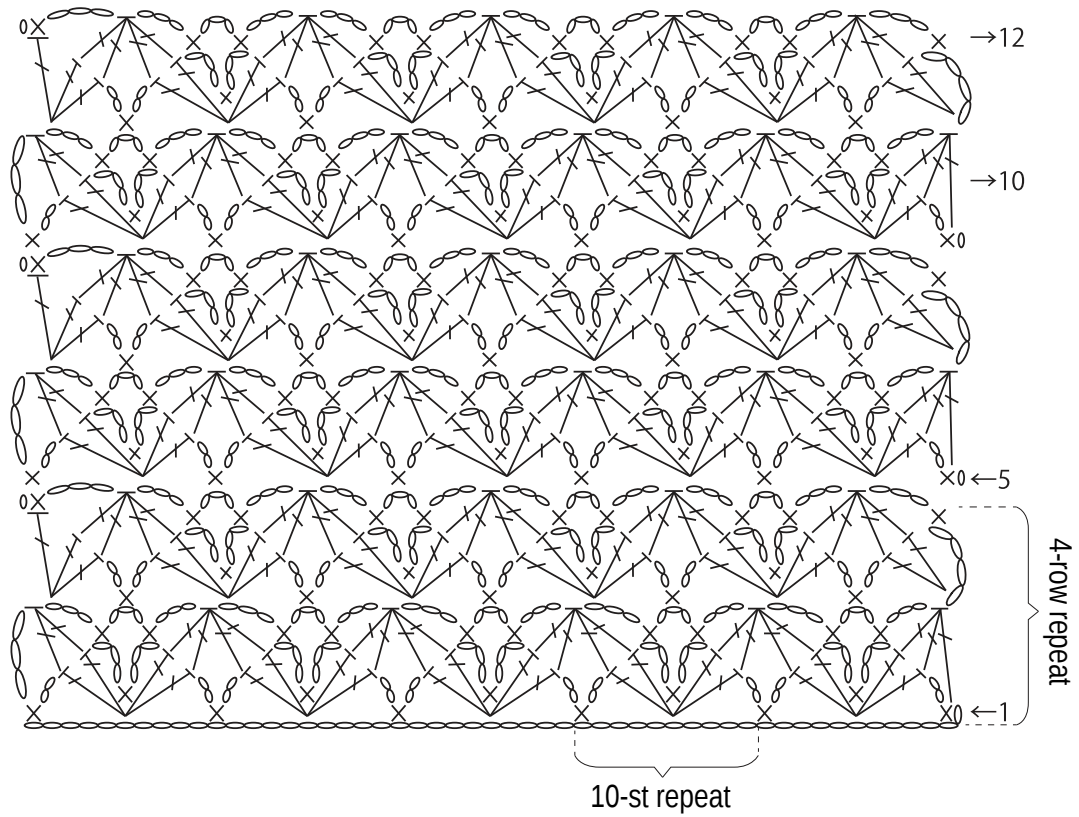
Body (make 2)



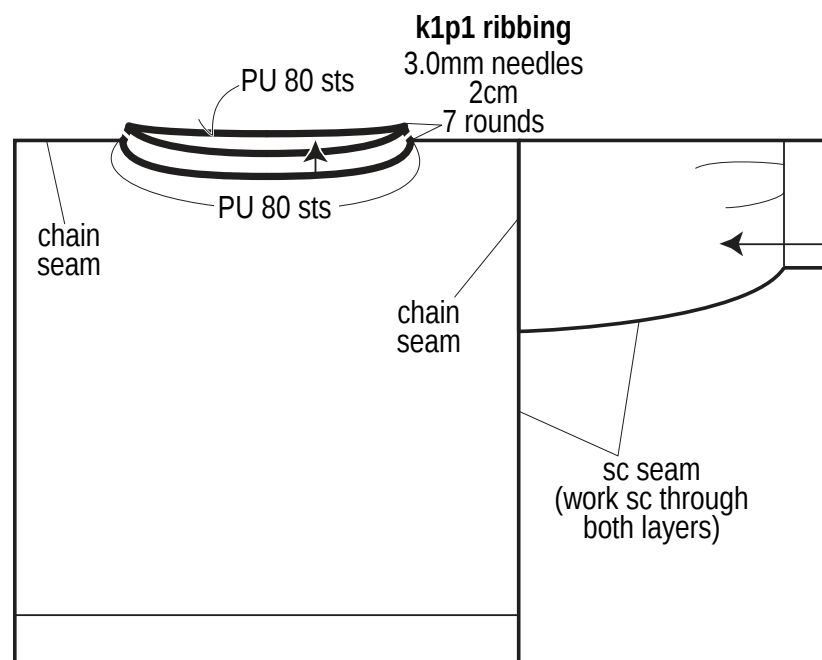
Sleeve



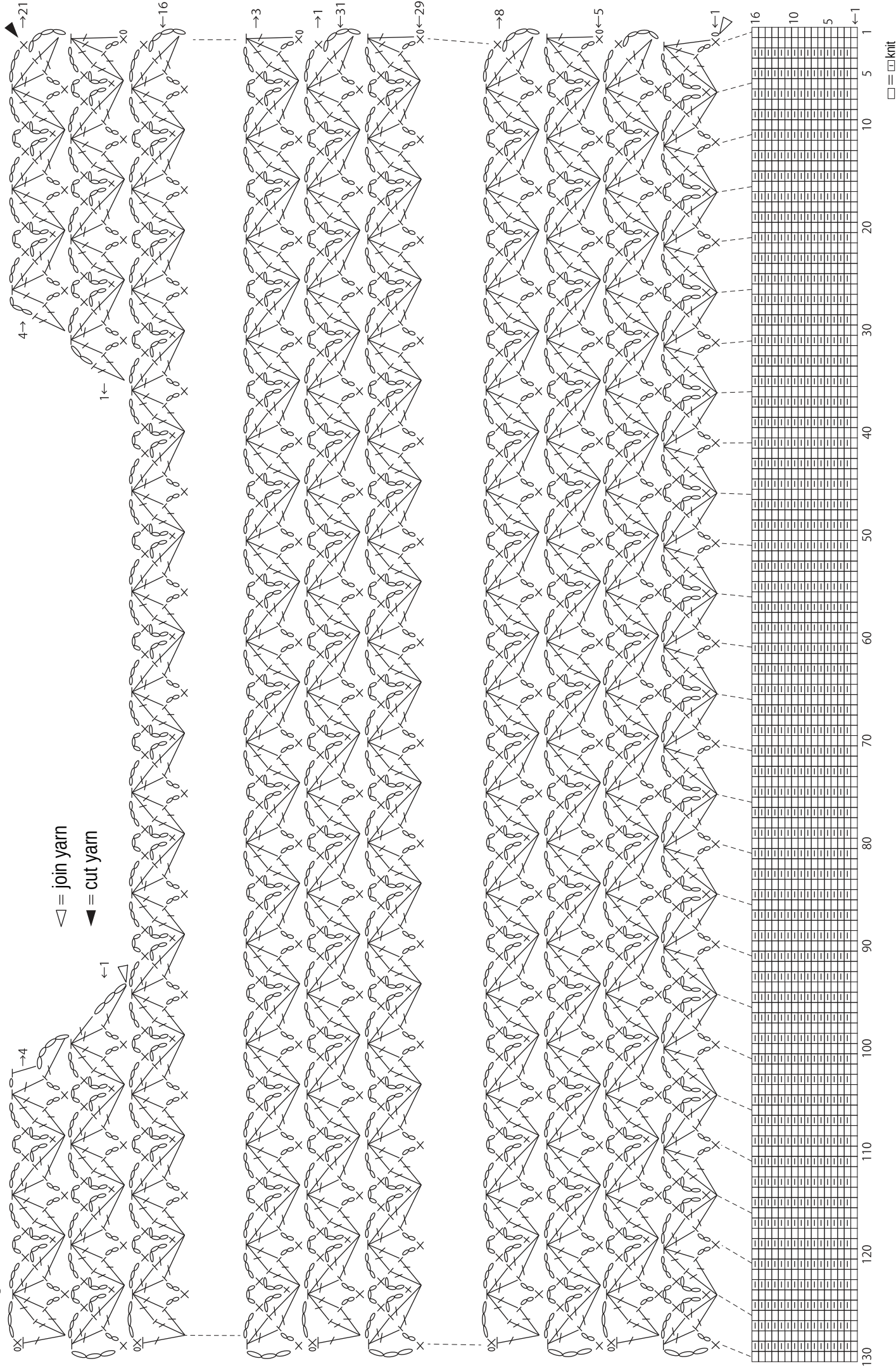
Pattern stitch



Finishing



Body



Sleeve

