

219s-02 Side Slit Tunic



Suggested yarn:

- Pierrot Yarns Caro [50% cotton, 50% rayon; 182 yds/166m per 1.41 oz./40g skein]; color #05 mustard, 6 skeins [220g]

Tools/Notions:

- 2.7mm (approx. US 2) and 3.0mm (US 2½) knitting needles or sizes necessary to achieve gauge
- 2.0mm approx. US 2) crochet hook or size necessary to achieve gauge

Finished measurements:

- bust 100cm/39.4"
- cross back width 50cm/19.7"
- back length 70cm/27.6"

Gauge (10cm/4" square):

- stockinette stitch: 28 sts and 39 rows
- k1p1 ribbing: 32 sts and 50 rows

Gauge may vary according to individual knitting style. Change needle size if necessary to achieve gauge. Alternatively, rework pattern with your own gauge measurements.

Summary

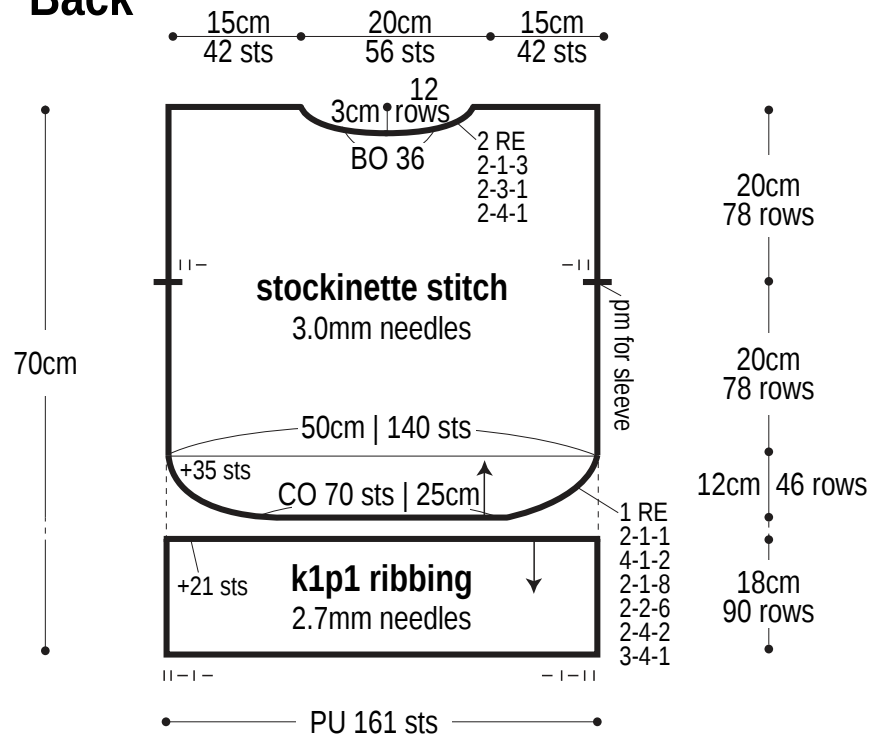
Body: Cast on with long-tail cast-on method. Work in st st. For back piece, work increases (backwards loop cast-on) at left and right sides to form a curved shape (see schematic). At armholes, always purl the third stitch in from the edge. Pick up stitches along hem and work welt in k1p1 ribbing. Bind off. For front piece, pick up stitches along cast-on edge and work k1p1 ribbing; bind off.

Finishing: Seam shoulders with crochet slip stitch seam. Seam stockinette stitch section of sides with mattress stitch up until markers for armholes; leave the ribbing section unseamed. Crochet 1 row of edging at back neckline only.

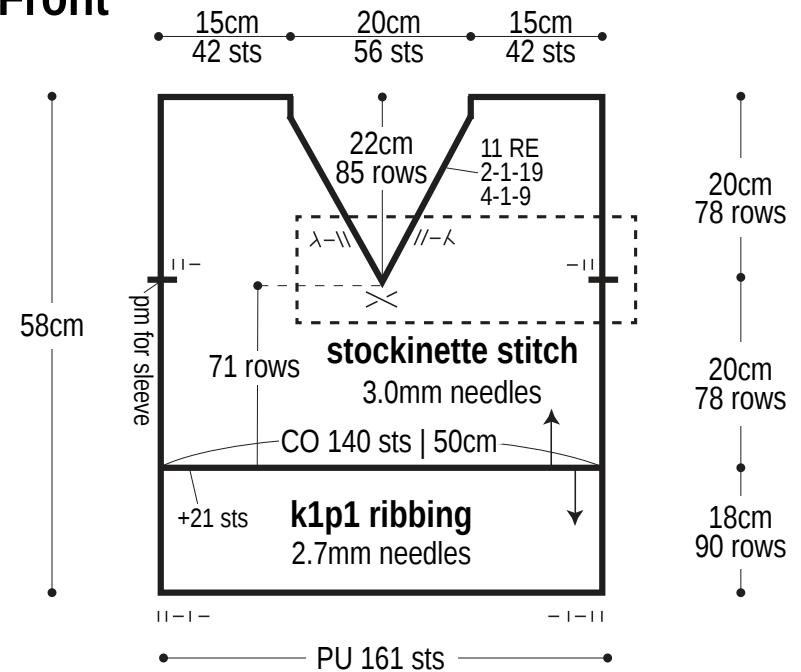
Abbreviations:

BO = bind off CO = cast on k = knit p = purl pm = place marker RE = row(s) even st st = stockinette stitch #-#-# = rows-stitches-times

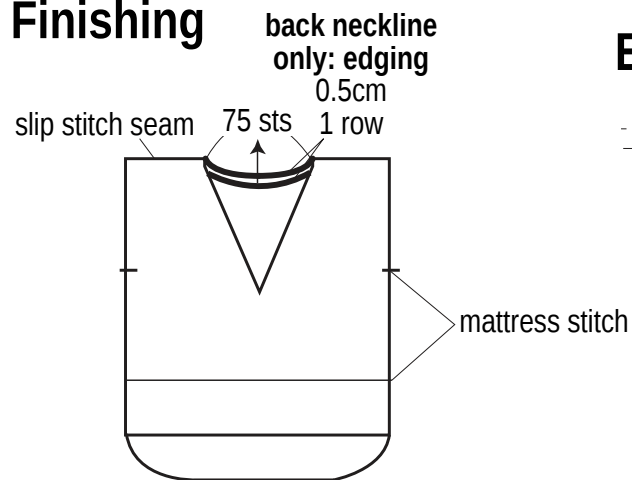
Back



Front



Finishing



Edging

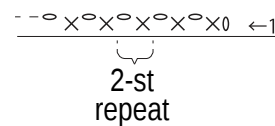
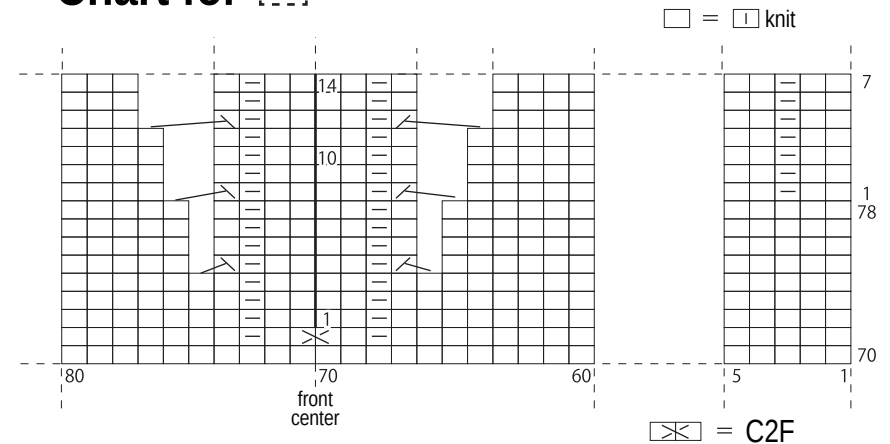


Chart for



Starting from row 72, separate right and left and begin working separately.