

# 840sw Patchwork Sweater



## Suggested yarn:

- Debbie Bliss Baby Cashmerino [55% merino wool, 33% acrylic, 12% cashmere; 137 yds/125m per 1.76 oz./50g skein]; color #340308 Teddy, 12 skeins [600g] - *exclusively distributed in Japan by Pierrot Yarns*

## Tools/Notions:

- 3.6mm (approx. US 5) and 4.2mm (approx. US 6) knitting needles or sizes necessary to achieve gauge
- cable needle

## Finished measurements:

- bust 108cm/42.5"
- center back neck-to-cuff 70cm/27.6"
- back length 53cm/20.9"

## Gauge (10cm/4" square):

- pattern stitch A: 22 sts and 32 rows
- pattern stitch B: 25 sts and 30.5 rows
- pattern stitch C: 26 sts and 29 rows
- pattern stitch D: 27 sts and 29 rows

*Gauge may vary according to individual knitting style. Change needle size if necessary to achieve gauge. Alternatively, rework pattern with your own gauge measurements.*

## Summary

**Body (back & front) and sleeves:** For each piece, cast on with long-tail cast-on method and knit according to schematics and charts. Bind off each piece in pattern. Seam each piece from wrong side with either mattress stitch or stitches-to-rows mattress stitch.

**Finishing:** Seam shoulders with crochet slip stitch seam. Seam sides and sleeve undersides with mattress stitch. Pick up stitches around neckline; work collar in k2p2 ribbing in the round. Bind off in pattern. Seam sleeves to body with crochet slip stitch seam.

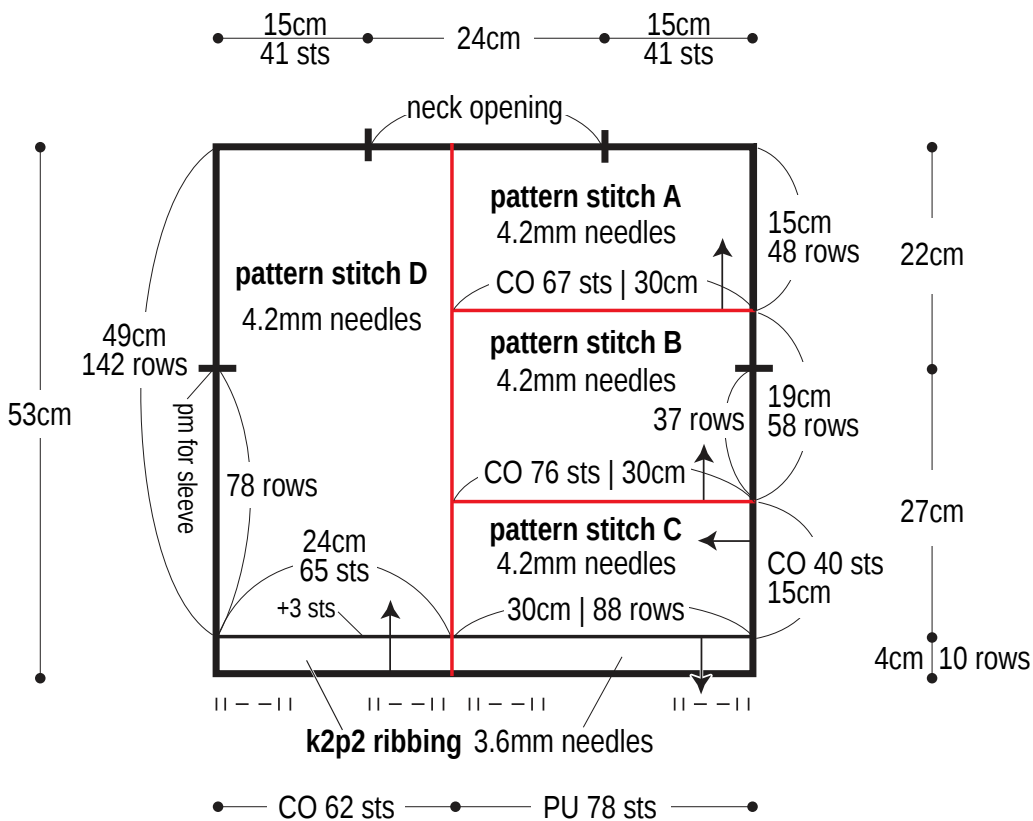
## Abbreviations:

CO = cast on  
k = knit  
p = purl  
pm = place marker  
PU = pick up  
RE = row(s) even  
#-#-# = rows-stitches-times

---

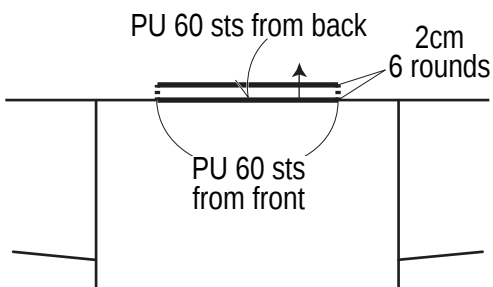
## Back

✳️Work front the same as back but in mirror image (in other words, the panel of pattern stitch D will be on the left front (as worn) instead of the right back).



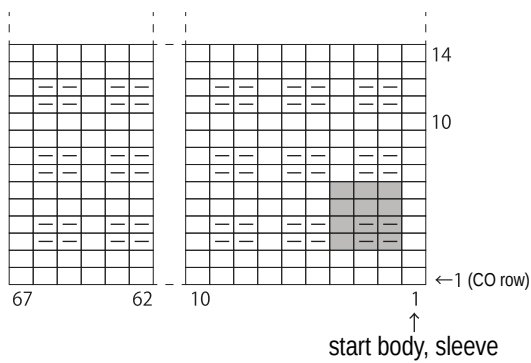
## Collar

k2p2 ribbing, 3.6mm needles

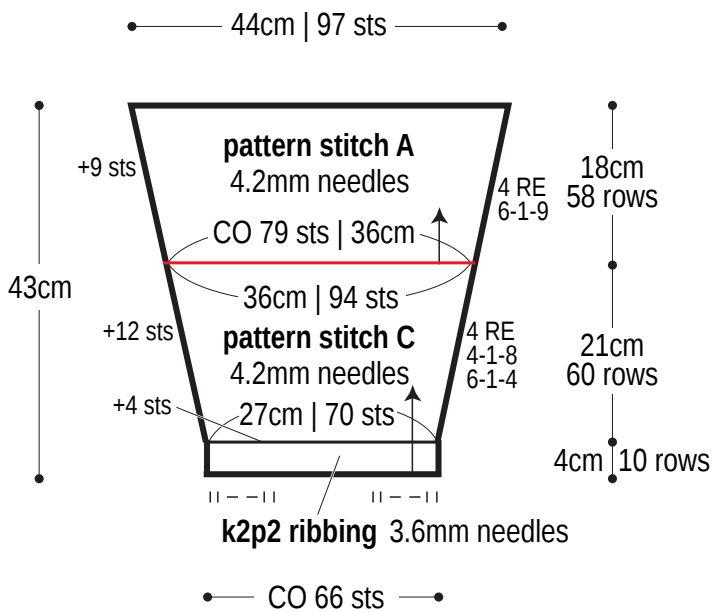


## Pattern stitch A

$\square = \square \mid \text{knit}$

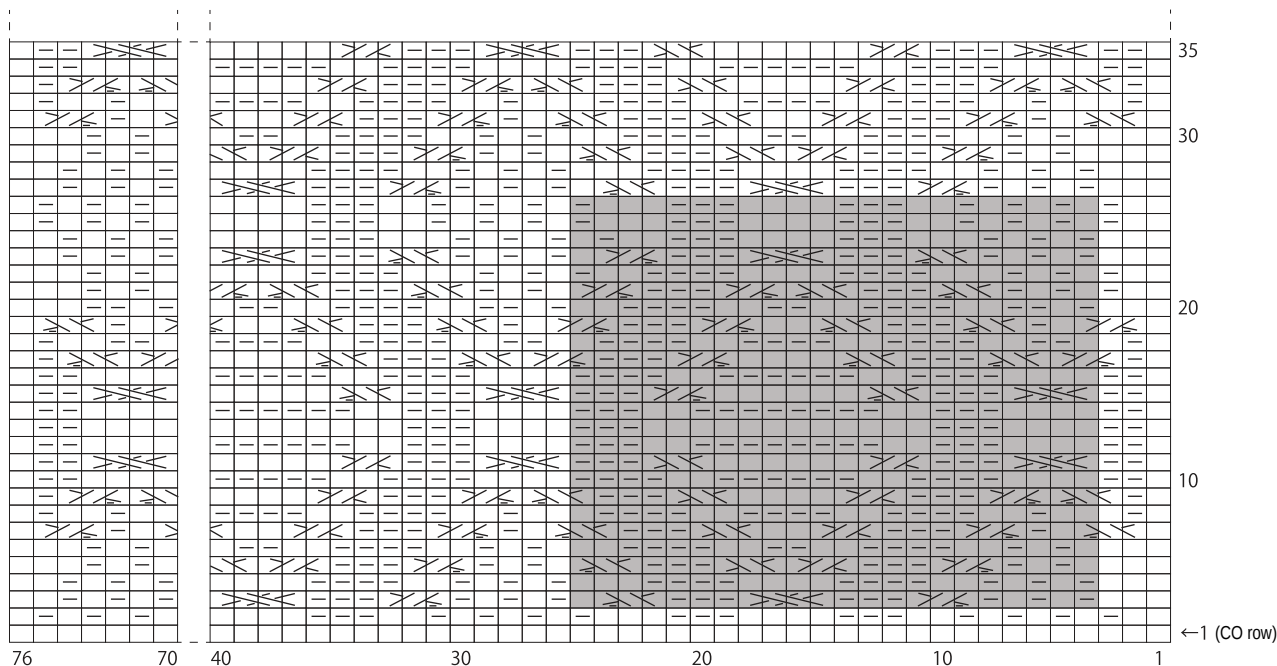


## Sleeve



## Pattern stitch B

$\square = \square \text{ knit}$





= 1 repeat (22 sts & 24 rows)

 = C4F (slip 2 onto cable needle & hold in front, k2, k2 from cable needle)

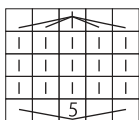
 = C3F (slip 2 onto cable needle & hold in front, k1, k2 from cable needle)

 = C3B (slip 1 onto cable needle & hold in back, k2, k1 from cable needle)

 = C3Fp (slip 2 onto cable needle & hold in front, p1, k2 from cable needle)

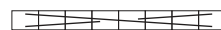
 = C3Bp (slip 1 onto cable needle & hold in back, k2, p1 from cable needle)

 = C3B (slip 2 onto cable needle & hold in back, k1, k2 from cable needle)



### 5-st, 5-row bobble stitch

Use QR code on smartphone to view a video tutorial about how to work the 5-st, 5-row bobble stitch.



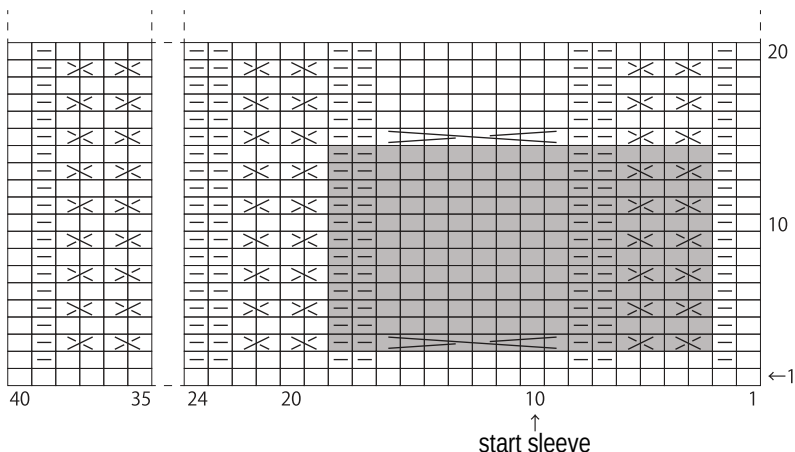
11



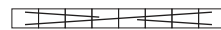
C8F (slip 4 onto cable needle & hold in front, k4, k4 from cable needle)

## Pattern stitch C

$\square = \square \text{ knit}$



= 1 repeat (16 sts & 12 rows)

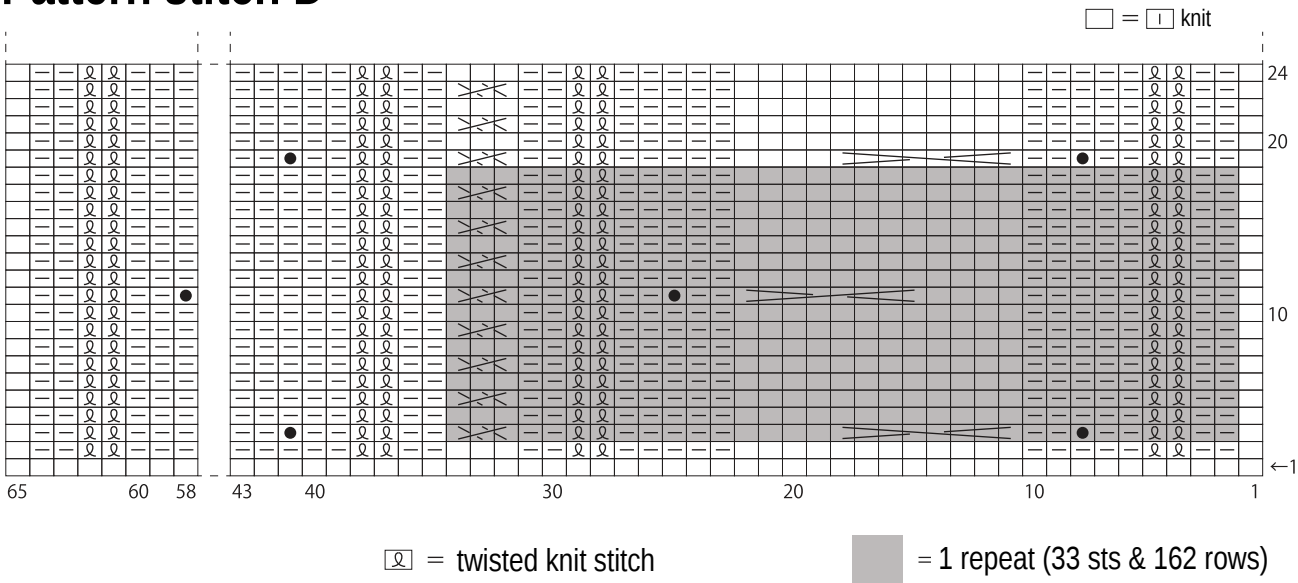


11



C8B (slip 4 onto cable needle & hold in back, k4, k4 from cable needle)

Pattern stitch D



Sleeve: pattern stitch C

