

351shawl Orgabits One Shawl



Suggested yarn:

- Pierrot Yarns Orgabits One [10% organic cotton, 90% conventional cotton; 142 yds/130m per 1.41 oz./40g skein]; color #15 natural, 7 skeins [260g]

Tools/Notions:

- 3.6mm (approx. US 4 or 5) knitting needles or size necessary to achieve gauge
- 2.5mm (approx. US B or C) crochet hook or size necessary to achieve gauge

Finished measurements:

- width 40cm/15.7"
- length 165cm/65.0"

Gauge (10cm/4" square):

- pattern stitch: 23 sts and 34.5 rows

Gauge may vary according to individual knitting style. Change needle size if necessary to achieve gauge. Alternatively, rework pattern with your own gauge measurements.

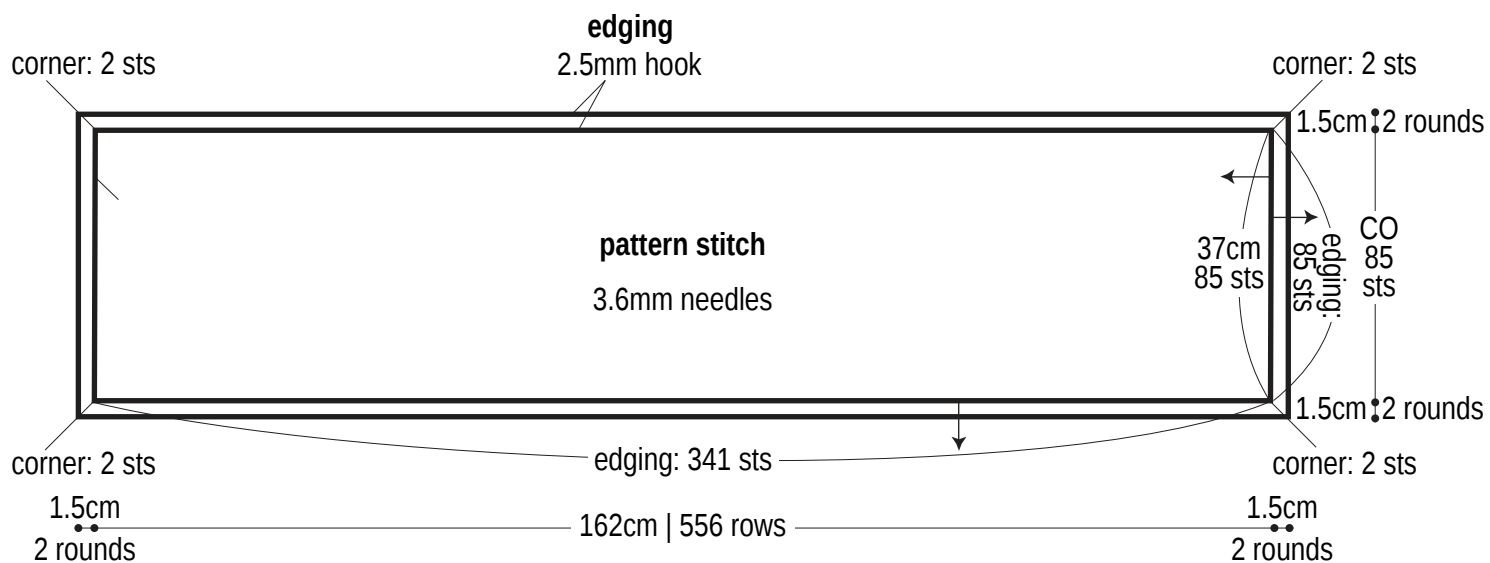
Summary

Cast on with long-tail cast-on method. Work in pattern stitch. Bind off. Crochet edging according to finishing schematic.

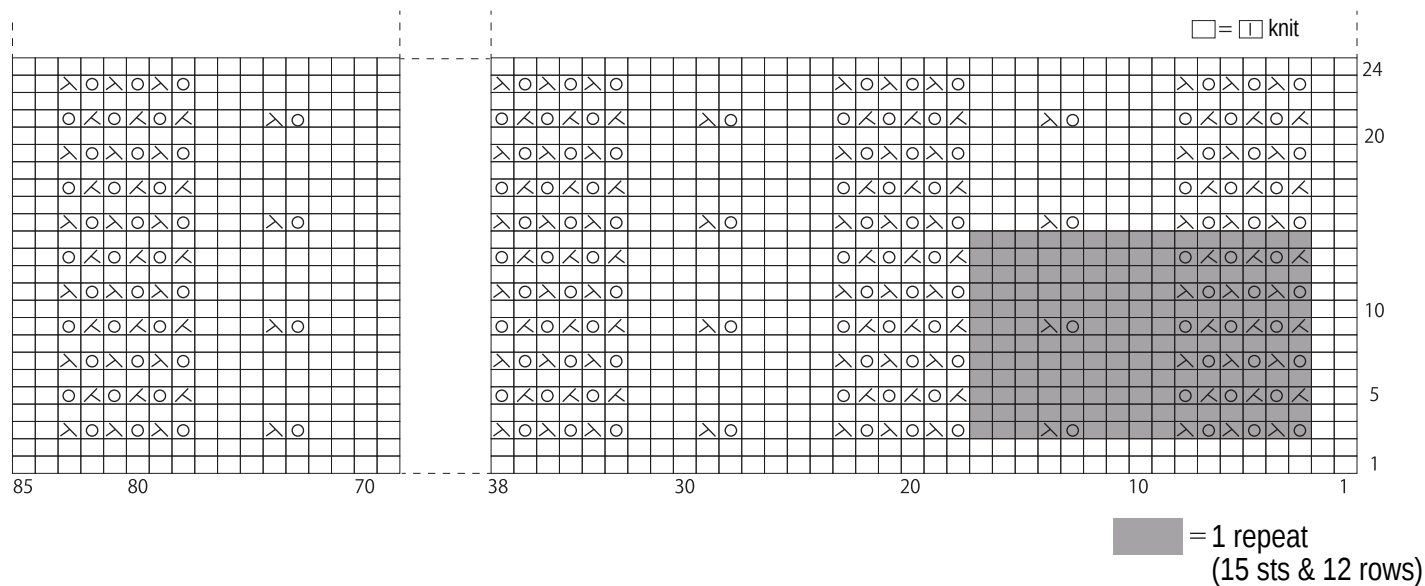
Abbreviations:

BO = bind off
CO = cast on

Shawl schematic



Pattern stitch



Edging

