

1264sw Calmo Round Yoke Sweater



Suggested yarn:

- Pierrot Yarns Calmo [58% cotton, 42% alpaca; 189 yds/173m per 1.41 oz./40g skein]; color #04 horizon blue, 5 skeins [185g]

Tools/Notions:

- 2.7mm (approx. US 2) and 3.0mm (US 2½) knitting needles or sizes necessary to achieve gauge
- 2.3mm (approx. US B) crochet hook or size necessary to achieve gauge

Finished measurements:

- bust 98cm/38.6"
- back length 50cm/19.7"

Gauge (10cm/4" square):

- stockinette stitch: 28 sts and 37.5 rows

Gauge may vary according to individual knitting style. Change needle size if necessary to achieve gauge. Alternatively, rework pattern with your own gauge measurements.

Summary

Yoke: Cast on with crochet provisional cast-on method. Work pattern stitch A in the round, working evenly spaced increases as indicated. When finished, do not bind off; place stitches on stitch holder(s).

Body (back & front): Pick up stitches from yoke. Cast on new stitches for underarm using backwards loop cast-on method. Work front and back separately in stockinette stitch and pattern stitch B (working back-and-forth in rows). Bind off in pattern.

Finishing: Seam sides with mattress stitch. For sleeve, pick up stitches from yoke and underarm area of body as indicated; work in pattern stitch B in the round. Remove provisional cast-on edge from neckline, picking up the live stitches as you do. Work pattern stitch B in the round. Bind off in pattern.

Abbreviations:

BO = bind off

ch = chain stitch

CO = cast on

k = knit

OH = on hold (that is, place on stitch holder)

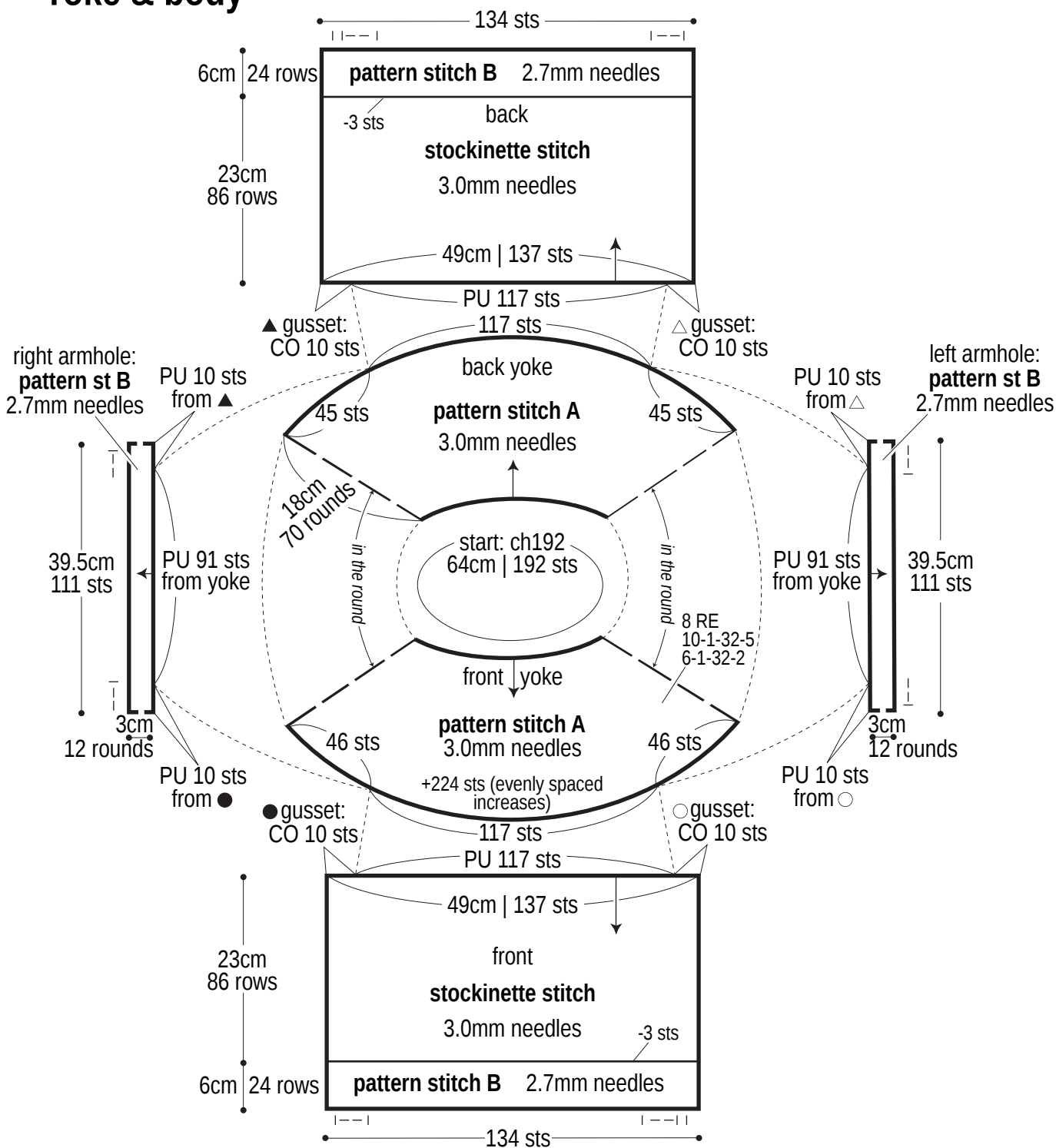
p = purl

PU = pick up

RE = row(s)/round(s) even

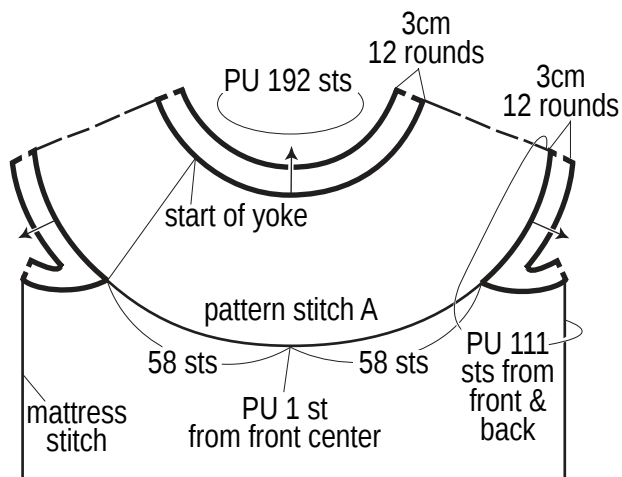
#-#-#-# = rounds-stitches-places-times [for evenly spaced decreases within a round]. For example, 1-2-3-4 means "every 1 round, decrease 2 stitches in each of 3 places across the round; do this 4 times total."

Yoke & body



Finishing: armholes & neckline

pattern stitch B
2.7mm needles



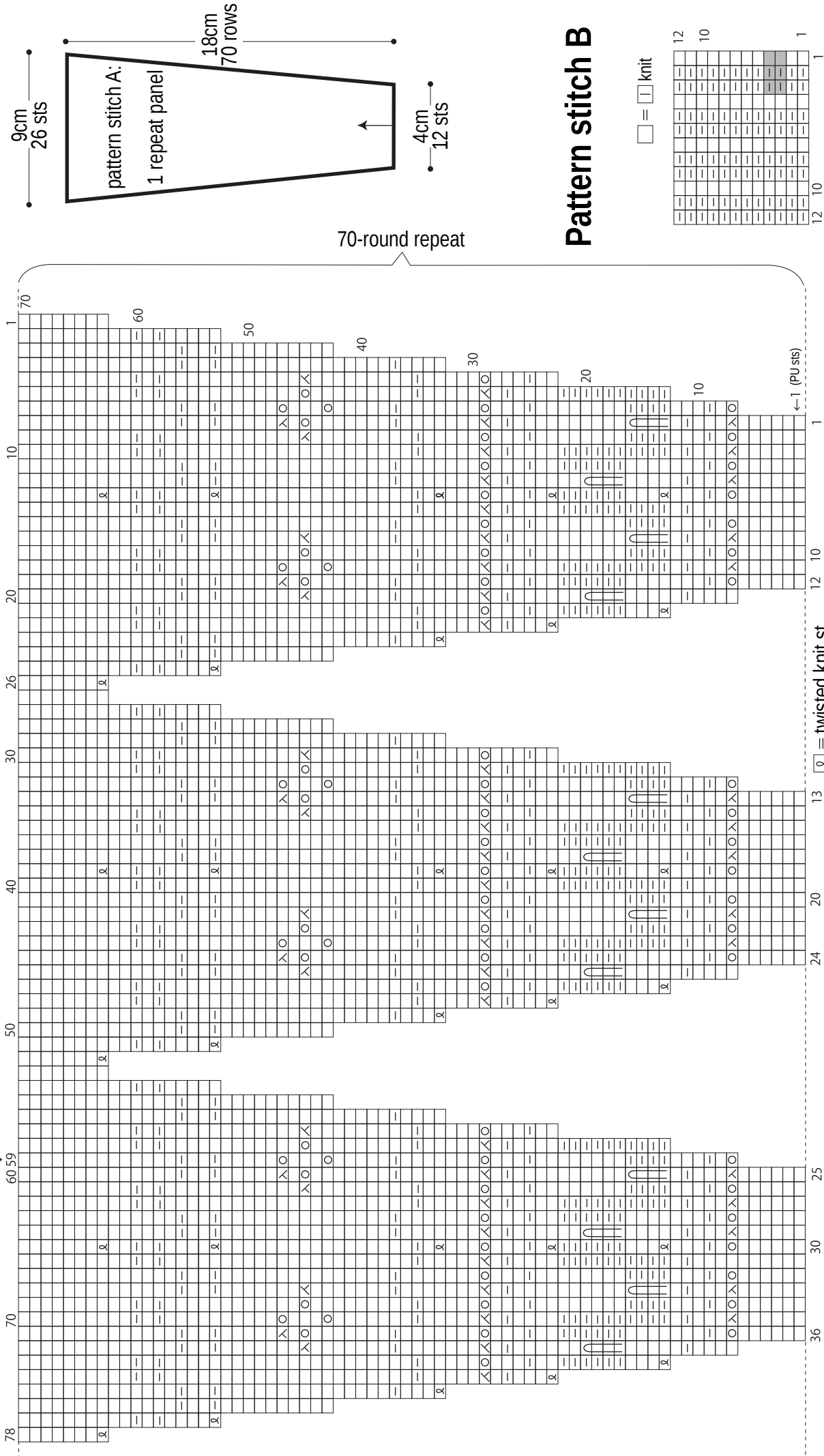
Pattern stitch A

evenly spaced yoke increases

front center
↓

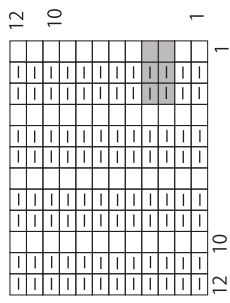
1 pattern repeat
(repeat 16 times)

□ = □ knit



Pattern stitch B

□ = □ knit



Work as charted for first 3 rows/rounds. On fourth row/round, insert right needle into the stitch 3 rows below the rightmost stitch on the left needle and knit 1.



■ = 3-st, 2-round repeat