

# 1262tunic Lace-up Tunic



## Suggested yarn:

- Pierrot Yarns Cotton Neat S Lamé Tiara [95% cotton, 5% polyester; 96 yds/88m per 1.41 oz./40g skein]; color #06 coral, 9 skeins [340g]

## Tools/Notions:

- 3.9mm (approx. US 6) & 4.5mm (US 7) knitting needles or sizes necessary to achieve gauge
- 3.0mm (approx. US C or D) crochet hook or size necessary to achieve gauge
- suede cord (100cm/39.4")

## Finished measurements:

- bust 96cm/37.8"
- back length 58cm/22.8"

## Gauge (10cm/4" square):

- pattern stitch: 23.5 sts and 28 rows

*Gauge may vary according to individual knitting style. Change needle size if necessary to achieve gauge. Alternatively, rework pattern with your own gauge measurements.*

## Summary

**Body (back & front):** Cast on with long-tail cast-on method. Work in garter stitch and pattern stitch according to schematics. Bind off. Seam center of bottom from hem to neckline using mattress stitch. Seam each side from marker for top of side slit until marker for armhole using mattress stitch.

**Finishing:** Crochet edging in the round around neckline and each armhole. Crochet edging along each side slit. Thread suede cord through neckline as shown in schematic.

## Abbreviations:

BO = bind off  
CO = cast on  
pm = place marker  
rep = pattern repeat(s)  
YO = yarn over

The diagram illustrates the construction of the back and front pieces of a garment. The back piece is a rectangle with a width of 24cm (57 sts) and a height of 10.5cm (30 rows). The front piece is a rectangle with a width of 24cm (57 sts) and a height of 28.5cm (80 rows). The back piece is made of garter stitch using 3.9mm needles, and the front piece is made of pattern stitch using 4.5mm needles. The shoulder line is marked on the back piece. The neckline is marked with 'pm for back neckline' and 'pm for front neckline'. The bottom edge of the front piece is marked with 'CO 57 sts' and 'garther stitch 3.9mm needles'.

Diagram illustrating the construction of the back and front pieces of a garment, showing dimensions and construction details.

**Back Piece:**

- Width: 24cm | 57 sts
- Height: 10.5cm | 30 rows
- Construction: garter stitch, 3.9mm needles
- Shoulder line is marked.

**Front Piece:**

- Width: 24cm | 57 sts
- Height: 28.5cm | 80 rows
- Construction: pattern stitch, 4.5mm needles
- Neckline is marked with "pm for front neckline".

**Construction Details:**

- Back neckline is marked with "pm for back neckline".
- Bottom edge of front piece is marked with "CO 57 sts" and "garther stitch 3.9mm needles".

The diagram illustrates the construction of a long-sleeved top, showing the back, front, and sleeve pieces with their respective dimensions and row counts.

**Back Piece:**

- Width: 24cm | 57 sts
- Length: 36cm (100 rows)
- Neckline: BO (Bound Off)
- Shoulder line: 10.5cm (30 rows)
- Side seam: 9cm (26 rows)
- Armhole: 20.5cm (58 rows)
- Side seam: 9cm (26 rows)
- Bottom: 1.5cm (6 rows)

**Front Piece:**

- Width: 24cm | 57 sts
- Length: 36cm (100 rows)
- Neckline: BO (Bound Off)
- Shoulder line: 10.5cm (30 rows)
- Side seam: 9cm (26 rows)
- Armhole: 20.5cm (58 rows)
- Side seam: 9cm (26 rows)
- Bottom: 1.5cm (6 rows)

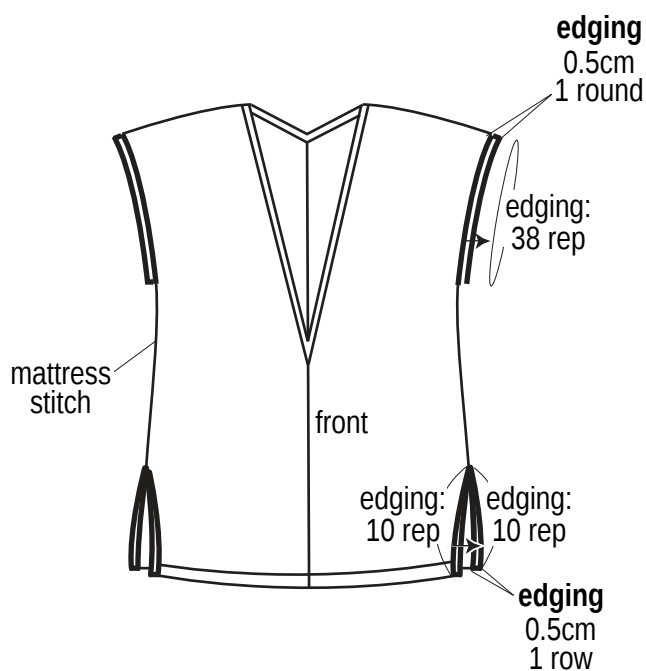
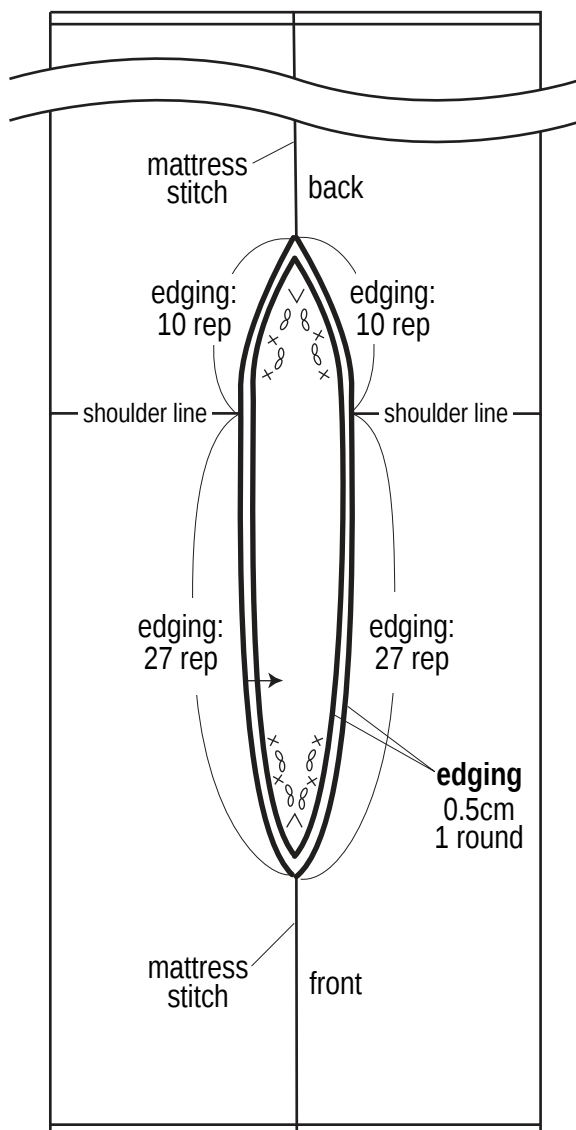
**Sleeve Piece:**

- Width: 24cm | 57 sts
- Length: 36cm (100 rows)
- Neckline: BO (Bound Off)
- Shoulder line: 10.5cm (30 rows)
- Side seam: 9cm (26 rows)
- Armhole: 20.5cm (58 rows)
- Side seam: 9cm (26 rows)
- Bottom: 1.5cm (6 rows)

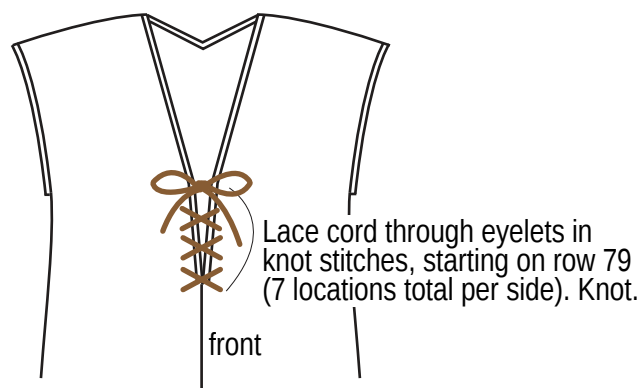
**Stitching Details:**

- Garment Body:** garter stitch, 3.9mm needles
- Sleeve:** pattern stitch, 4.5mm needles
- Neckline:** BO (Bound Off)
- Side Seams:** pm for side slit boundary
- Armholes:** pm for armholes
- Bottom:** garter stitch, 3.9mm needles

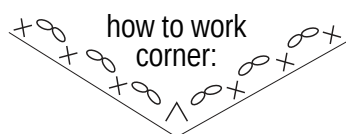
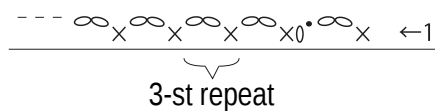
# Finishing



## How to lace neckline

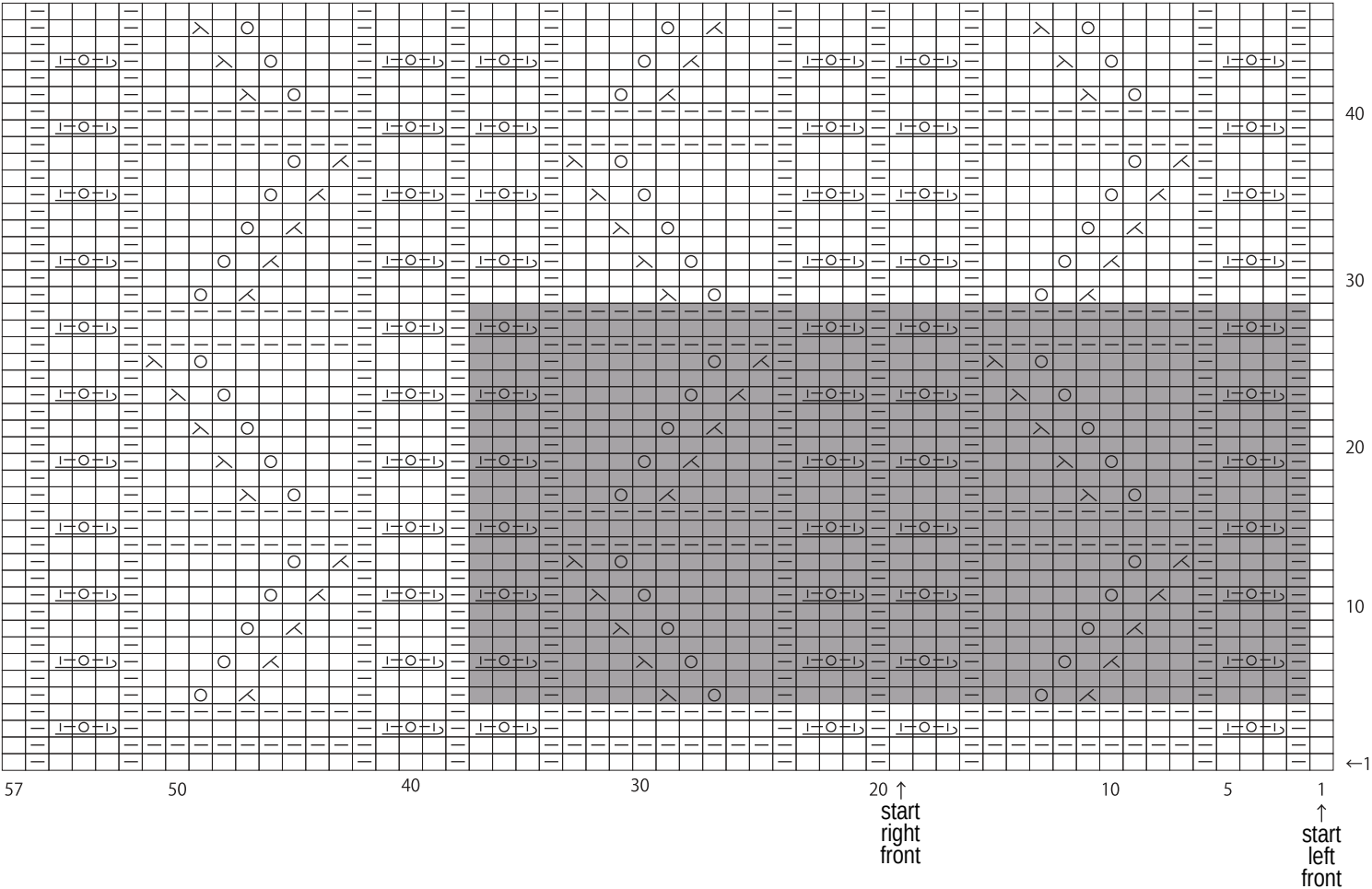


## Edging 3.0mm hook



Pattern stitch

□ = □ knit



1-0-1 = 3-stitch knot stitch  
(Insert right needle into third stitch on left needle and slip it over the first two stitches on the left needle. k1, YO, k1).

= 1 repeat  
(36 sts & 24 rows)