

1262sw Tiara Sleeveless Top



Suggested yarn:

- Pierrot Yarns Cotton Neat S Lamé Tiara [95% cotton, 5% polyester; 96 yds/88m per 1.41 oz./40g skein]; color #04 blue, 7 skeins [260g]

Tools/Notions:

- 3.6mm (approx. US 4 or 5) knitting needles or size necessary to achieve gauge
- 3.0mm (approx. US C or D) crochet hook or size necessary to achieve gauge

Finished measurements:

- bust 88cm/34.6"
- cross back width 36cm/14.2"
- back length 57cm/22.4"

Gauge (10cm/4" square):

- stockinette stitch: 22 sts and 30 rows
- pattern stitch: 22 sts and 32.5 rows

Gauge may vary according to individual knitting style. Change needle size if necessary to achieve gauge. Alternatively, rework pattern with your own gauge measurements.

Summary

Body (back & front): Cast on with long-tail cast-on method. Work in st st. On front piece only, work upper chest area in pattern stitch as indicated in schematic.

Finishing: Seam shoulders with crochet slip stitch seam. Seam sides with mattress stitch. With crochet hook, work edging in the round around hem, armholes, and neckline, respectively.

Abbreviations:

BO = bind off

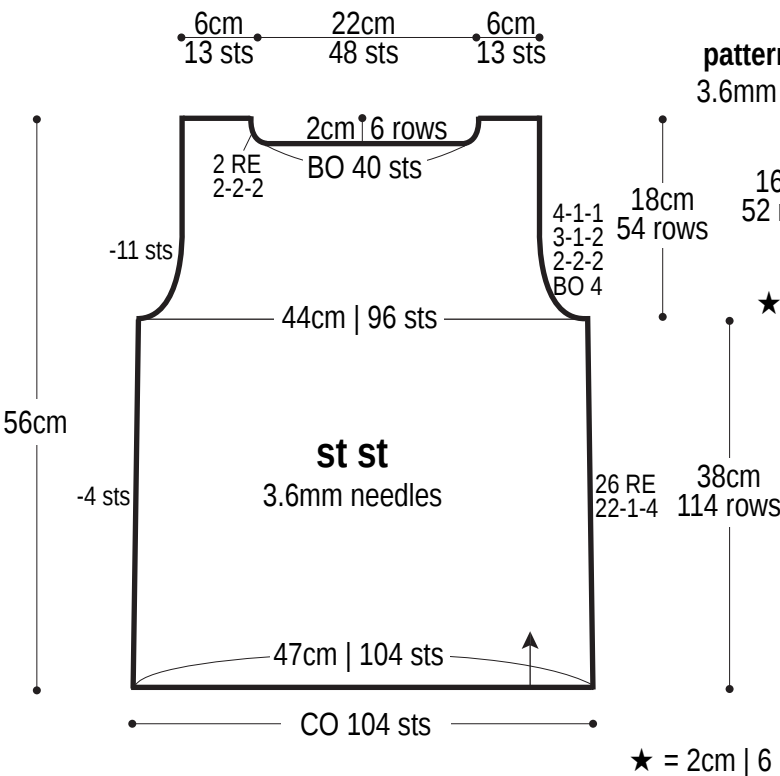
CO = cast on

RE = row(s) even

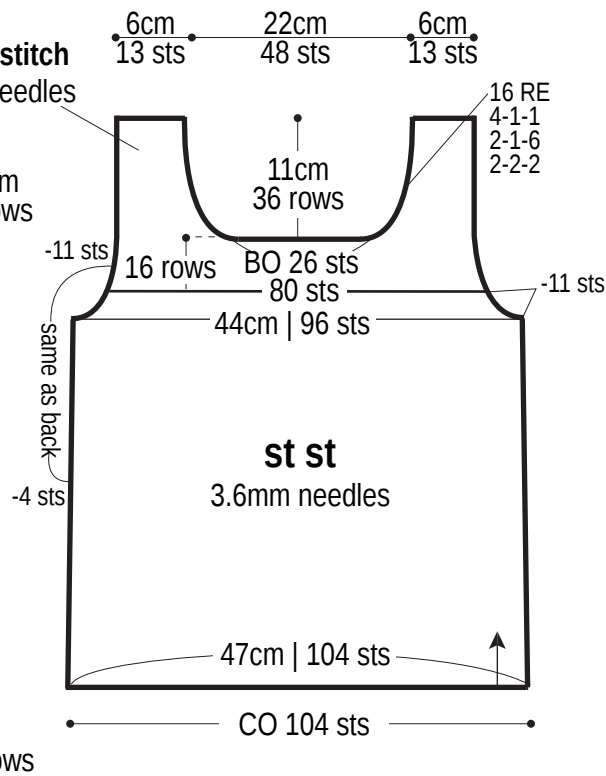
st st = stockinette stitch

#-#-# = rows-stitches-times

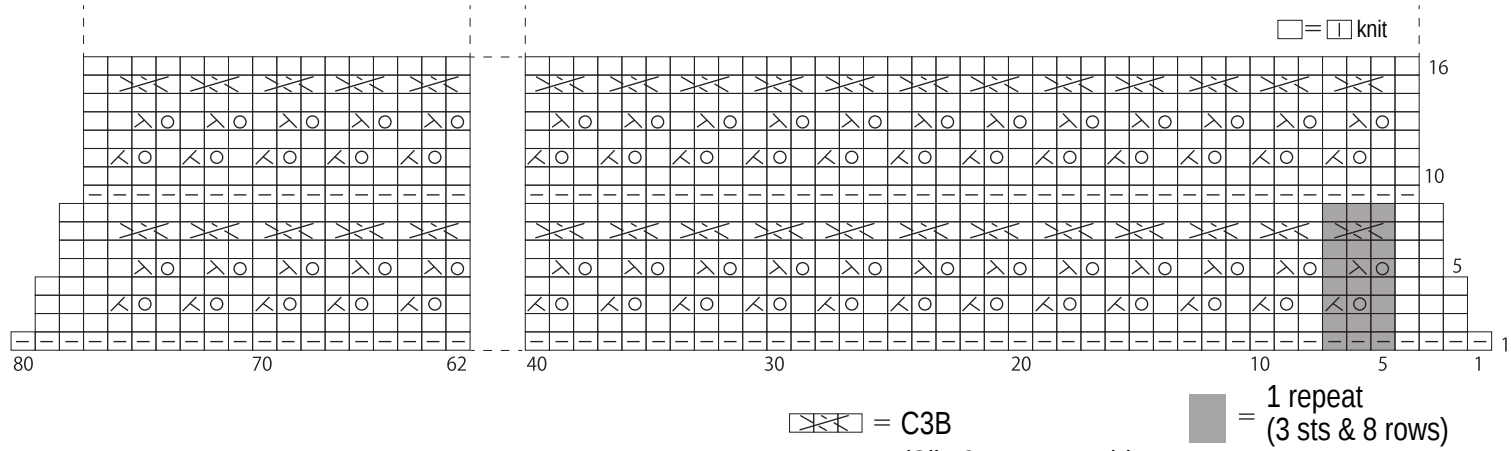
Back



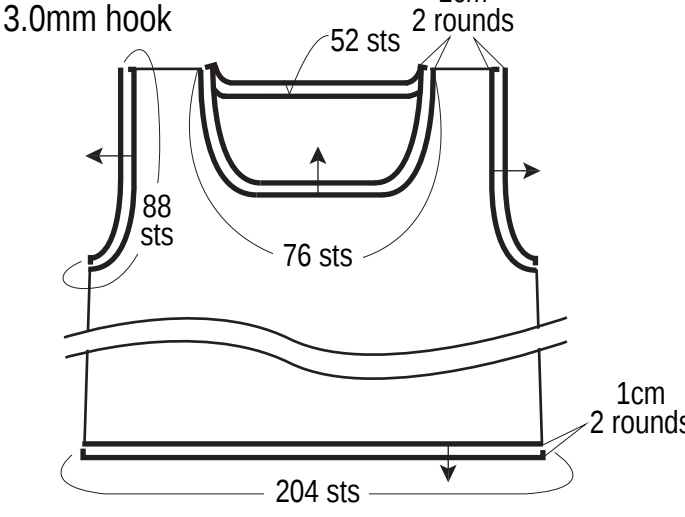
Front



Pattern stitch



Edging



Edging

