

tricot13-1 Komachi Vest



Suggested yarn:

- Keito-Zakka Stores Komachi [100% cotton; 109 yds/100m per 1.41 oz./40g skein]; color #12 lapis lazuli, 13 skeins [505g]

Tools/Notions:

- 3.9mm (approx. US 6) knitting needles or size necessary to achieve gauge
- 3.0mm (approx. US C or D) crochet hook or size necessary to achieve gauge

Finished measurements:

- center back neck-to-cuff 41cm/16.1"
- back length 80cm/31.5"

Gauge (10cm/4" square):

- pattern stitch A: 20 sts and 33 rows
- pattern stitch B: 20 sts and 39 rows
- pattern stitch C: 20 sts and 31 rows

Gauge may vary according to individual knitting style. Change needle size if necessary to achieve gauge. Alternatively, rework pattern with your own gauge measurements.

Summary

Back body: For increasing at sleeves, work 4 crochet foundation chains (each 12 sts long). Save these to be used at sleeves. With knitting needles, cast on with long-tail cast-on method. Work in k1p1 ribbing and pattern stitch. When it's time to increase stitches for sleeves, pick up stitches from one of the crochet chains (one per sleeve, front/back).

Front body: Cast on with long-tail cast-on method. Work in k1p1 ribbing and pattern stitch. Work sleeve increases as for back. After binding off shoulders, continue working back neckline as a continuation of the wrong (see schematic). Bind off.

Finishing: Seam shoulders with crochet slip stitch seam. With right sides facing each other, seam ends of back of collar together with whipstitch, then seam collar to back of garment with stitches-to-rows mattress stitch. Seam sides with mattress stitch. Seam sleeves with whipstitch. Crochet sc in the round at each cuff.

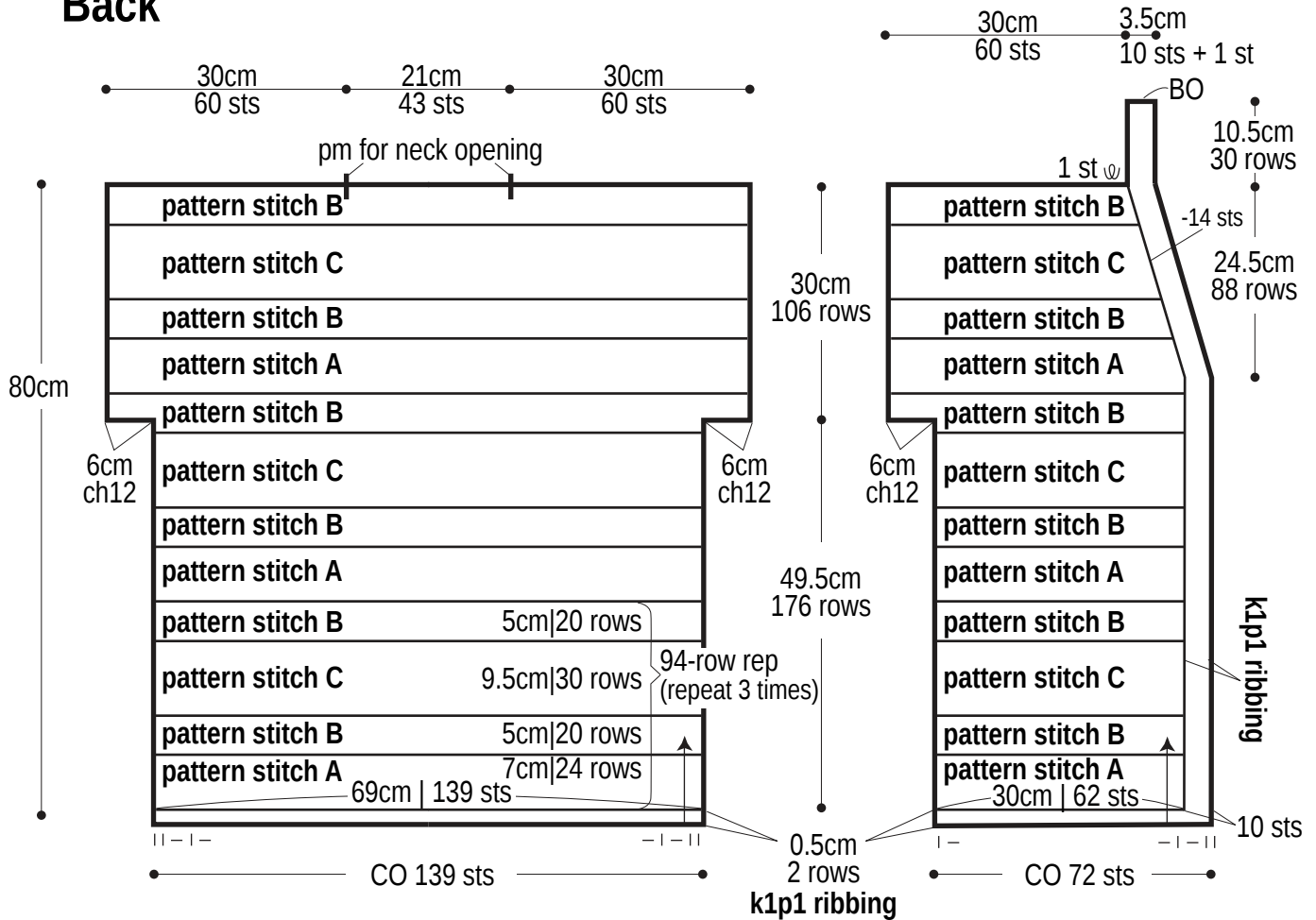
Abbreviations:

BO = bind off
ch = chain stitch
CO = cast on
k = knit
p = purl
pm = place marker
rep = pattern repeat(s)
sc = single crochet (US)

3.9mm needles

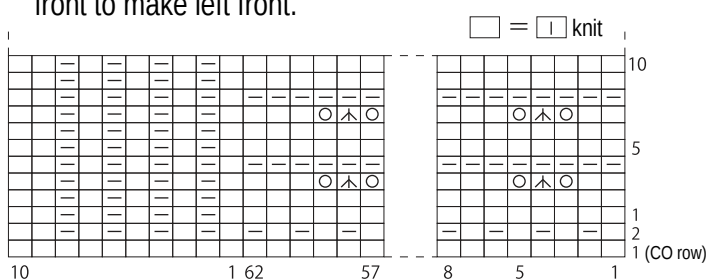
3.9mm needles

Back

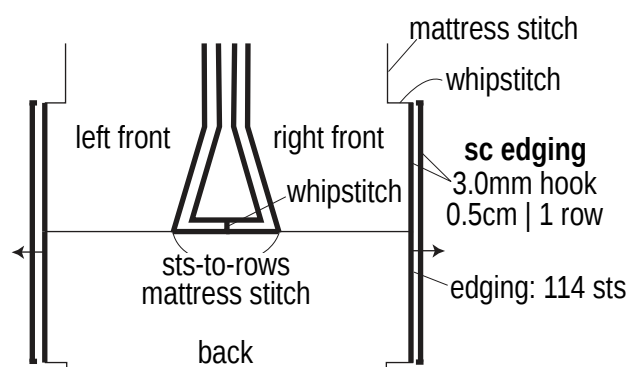


Left front

✳Reverse shaping for right front to make left front.



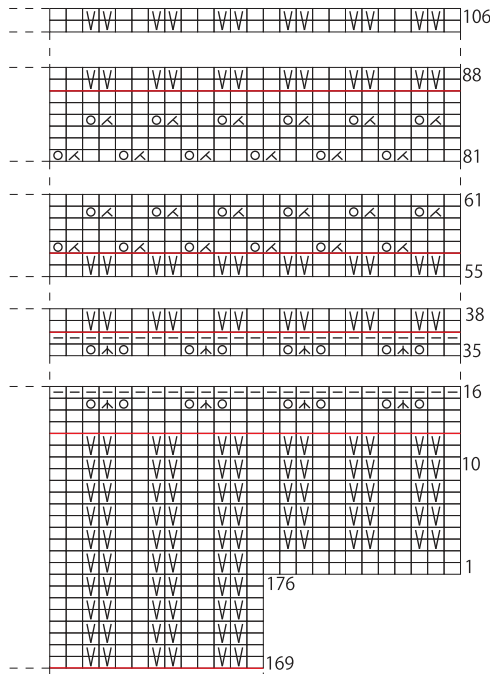
Finishing



Right front

Back

□ = 1 knit



▽ = slip stitch

※Use QR code on smartphone to view a video tutorial about how to work slip stitch.



pattern stitch C

■ = 1 repeat (4 sts & 6 rows)

pattern stitch B

■ = 1 repeat (4 sts & 2 rows)

pattern stitch A

■ = 1 repeat (6 sts & 4 rows)

