

219s-05 Fringe Pullover



Suggested yarn:

- Pierrot Yarns Ethnic Denim 2 [100% cotton; 118 yds/108m per 1.06 oz./30g skein]; color #15 charcoal black, 12 skeins [340g]

Tools/Notions:

- 3.3mm (approx. US 3) knitting needles or size necessary to achieve gauge
- 2.3mm (approx. US B) crochet hook or size necessary to achieve gauge

Finished measurements:

- bust 96cm/37.8"
- center back neck-to-cuff 35.5cm/14.0"
- back length (excluding fringe) 45.5cm/17.9"

Gauge (10cm/4" square):

- stockinette stitch: 28 sts and 36 rows
- pattern stitch A & A': 28 sts and 36 rows
- pattern stitch B, B' & C: 29 sts and 12.5 rows

Gauge may vary according to individual knitting style. Change needle size if necessary to achieve gauge. Alternatively, rework pattern with your own gauge measurements.

Summary

Body (back & front): Work foundation chain to begin, then crochet in pattern stitch B. Change to knitting needles, pick up stitches, and work in pattern stitch A. Bind off. With crochet hook, work pattern stitch B'. Then pick up stitches with knitting needles again and work in pattern stitches A & A'. Make second body piece identical to the first.

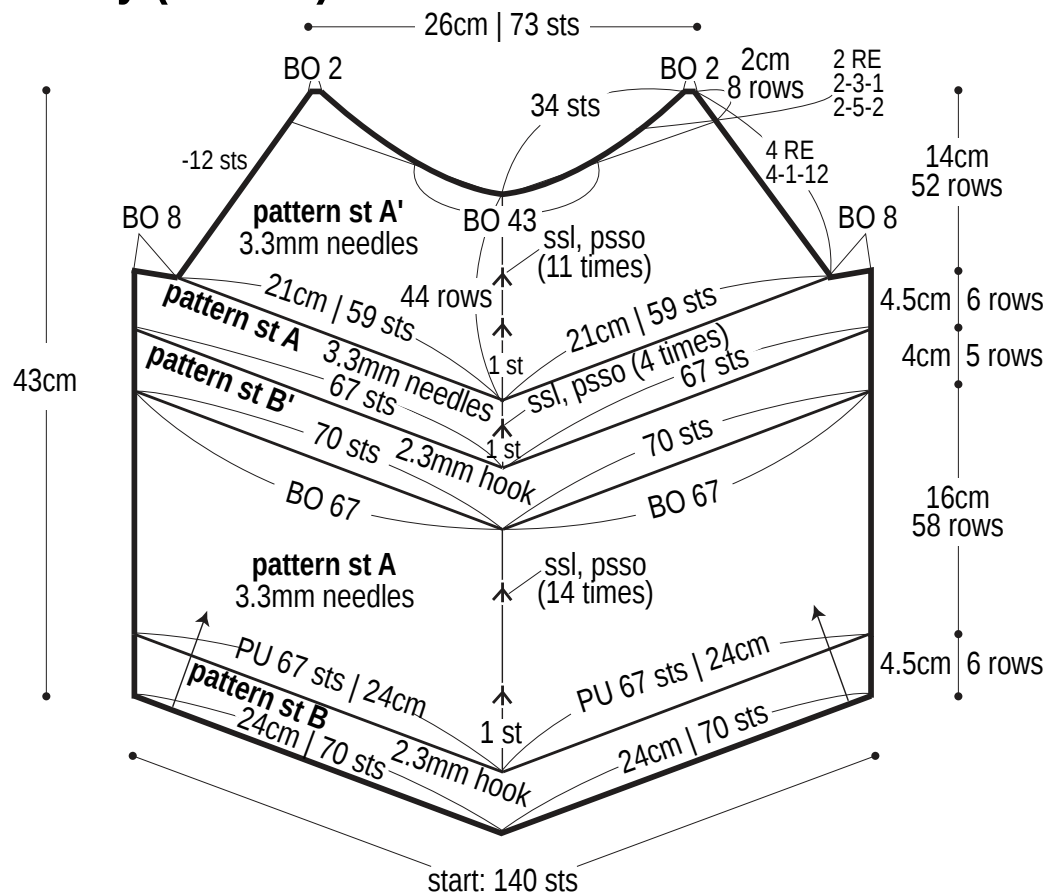
Sleeve (make 2): Work foundation chain to begin, then crochet in pattern stitch C. Pick up stitches with knitting needles and work in stockinette stitch. After binding off, crochet edging along cuff edge.

Finishing: Seam raglan edges with mattress stitch. Crochet pattern stitch D around neckline. Seam sides and sleeves with mattress stitch, except for underarm gusset, which you should seam with Kitchener stitch. Make fringe and attach to hem of garment.

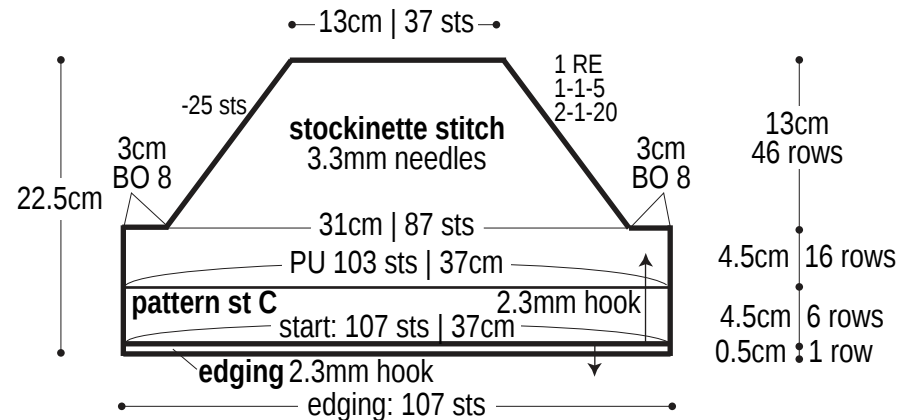
Abbreviations:

BO = bind off ch = chain stitch CO = cast on psso = passed slipped st(s) over PU = pick up RE = row(s) even sc = single crochet (US)
ssk = slip, slip, knit (slip 1 knitwise, slip 1 knitwise, knit 1) tr = treble crochet (US) #-#-# = rows-stitches-times

Body (make 2)



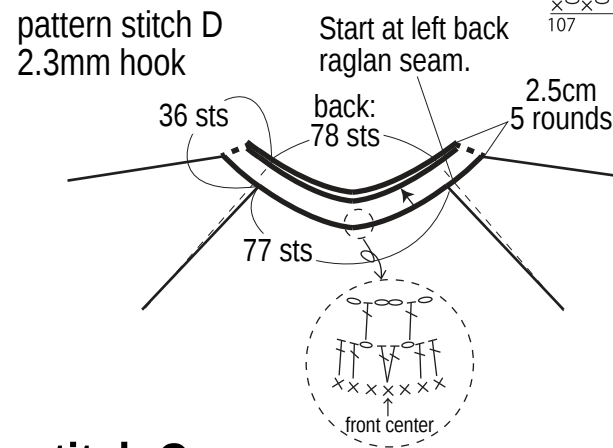
Sleeve



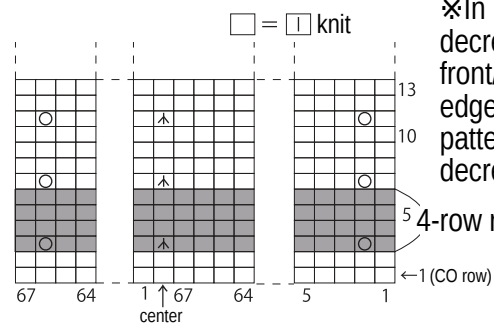
Edging



Collar

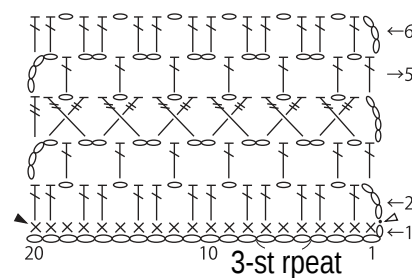


Pattern stitch A & A'



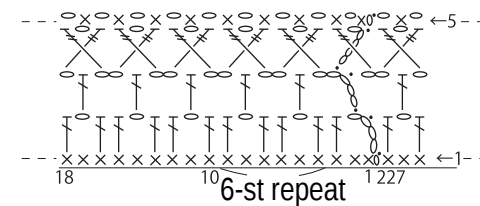
※In pattern stitch A, work center double decreases (specifically, ssk psso) at front/back center and yarn overs (near edge) every 4 rows as shown in chart. In pattern stitch A', work center double decreases but do *not* work yarn overs.

Pattern stitch C

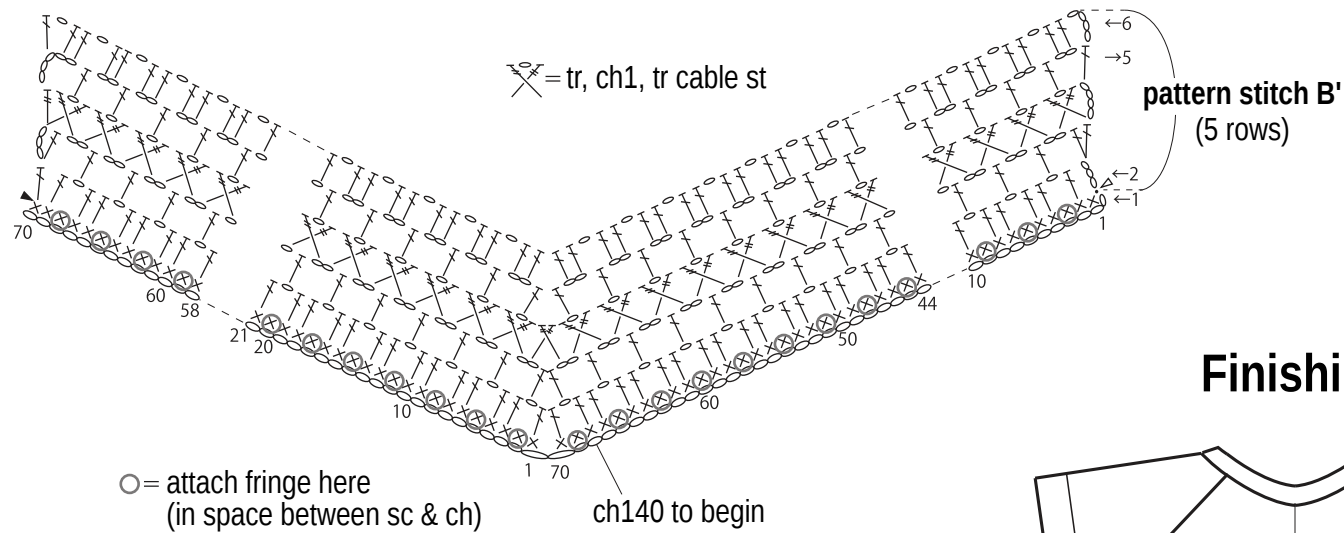


◁ = join yarn
▶ = cut yarn

Pattern stitch D



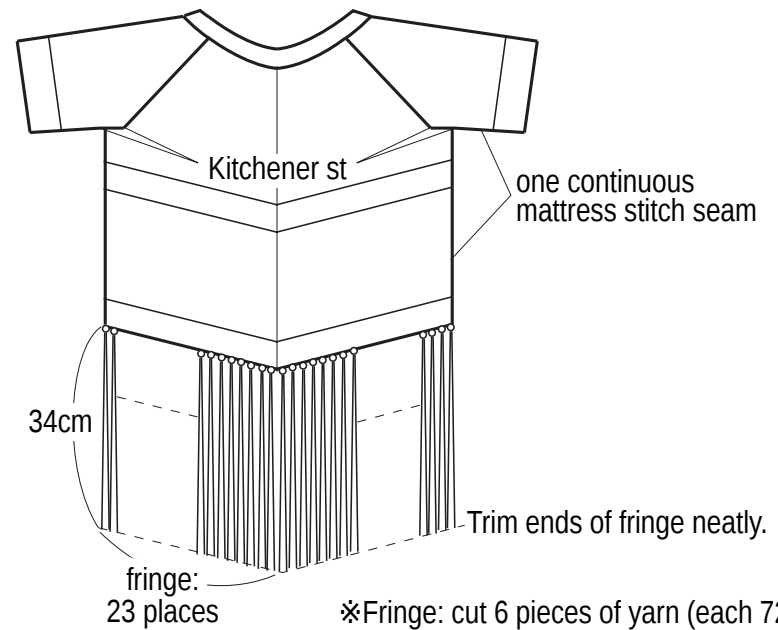
Pattern stitch B & B'



Use QR code on smartphone to view a video tutorial about how to work the crochet cable stitch.



Finishing



※Fringe: cut 6 pieces of yarn (each 72cm long); fold them in 2. Tie each fringe where indicated in chart to the left. Attach 92 fringes total (23 X each of the 4 sections).