

98-14 Silk Vest



Suggested yarn:

- Pierrot Yarns Silk100 Bouclé Fingering [100% silk; 547 yds/500m per 3.53 oz./100g cone]; color #4522 dark brown, 2 cones [150g]

Tools/Notions:

- if machine knitting: standard gauge knitting machine (4.5mm needle pitch)
- 3.3mm (approx. US 3) knitting needles or size necessary to achieve gauge
- 2.3mm (approx. US B) crochet hook or size necessary to achieve gauge
- 4 buttons (15mm/0.6")

Finished measurements:

- bust 98cm/38.6"
- cross back width 34cm/13.4"
- back length 49cm/19.3"

Gauge (10cm/4" square):

- pattern stitch: 31 sts and 46 rows

Gauge may vary according to individual knitting style. Change needle size if necessary to achieve gauge. Alternatively, rework pattern with your own gauge measurements.

Summary

Back: For hand knitting, cast on with crochet provisional cast-on method. For machine knitting, cast on with provisional cast-on edge. Knit according to schematics. For hand knitting, see stitch chart. For machine knitting, see punchcard.

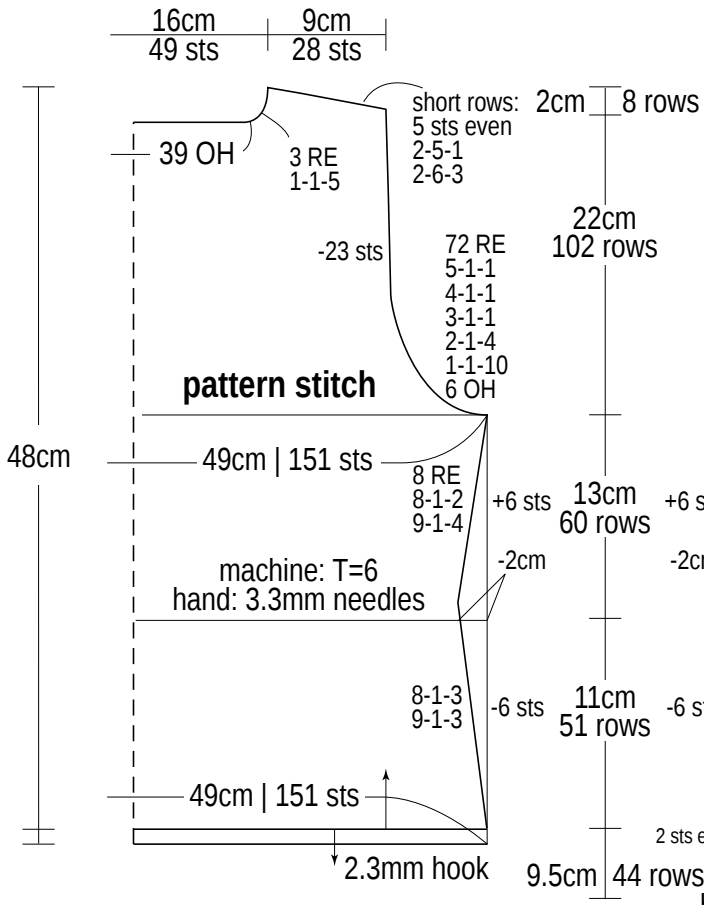
Front: Cast on as for front, except that you'll start with only 3 sts. Increase with backwards loop cast-on increase at each edge every 2 rows.

Finishing: Seam shoulders with crochet slip stitch seam. Seam sides with mattress stitch. Crochet 4 rounds of sc edging at bound-off edges, armholes, neckline, and hem, respectively.

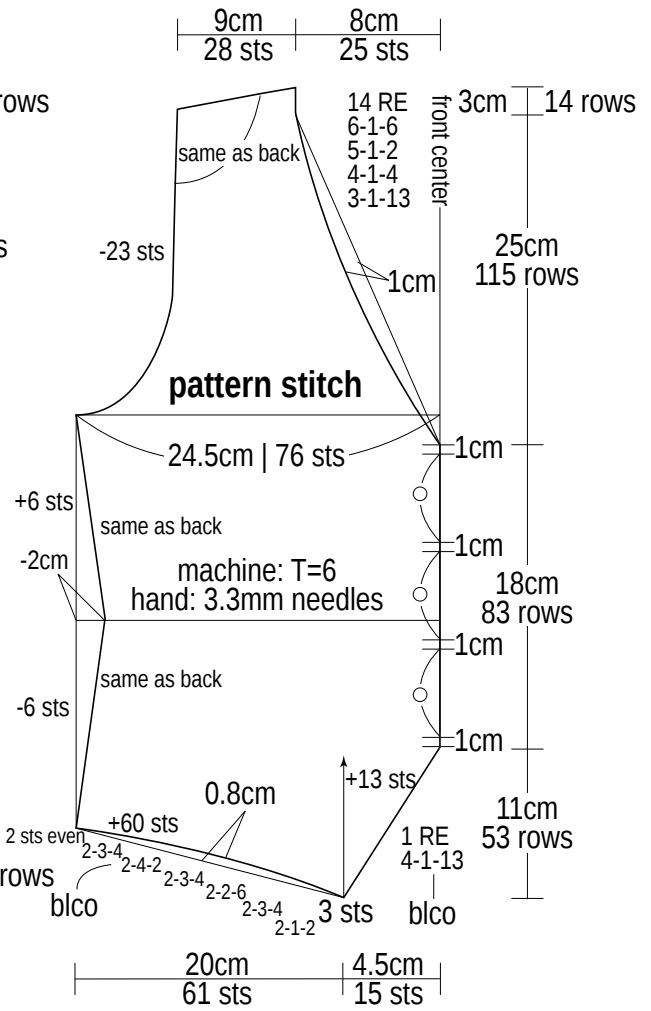
Abbreviations:

BO = bind off
CO = cast on
OH = on hold (that is, place on stitch holder)
RE = row(s) even
sc = single crochet (US)
T = tension dial setting (machine knitting only)
#-#-# = rows-stitches-times

Back



Front

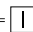


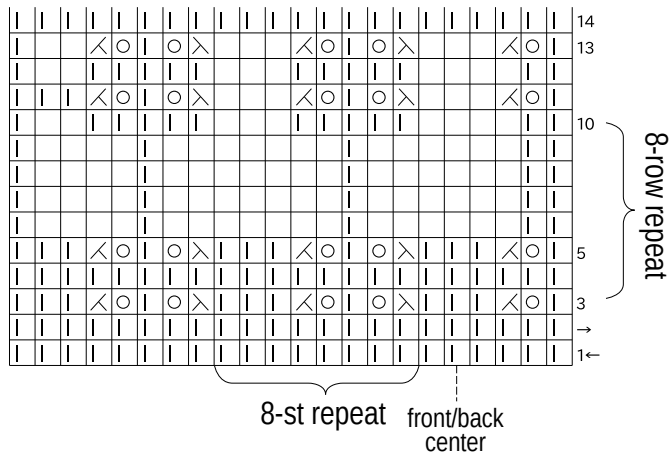
blco = backwards loop cast-on increase

Hand knitting

Pattern stitch chart

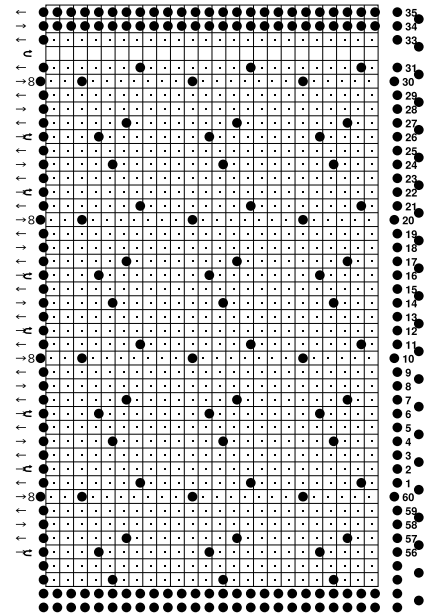
3.3mm needles

□ =  knit



Machine knitting

Pattern stitch: lace punchcard



Crochet edging

Armhole, collar, button band, & hem edging

2.3mm hook

