

# 1244-sc Kushel Shawl & Corsage



## Suggested yarn:

- Pierrot Yarns Kushel [70% silk, 30% cashmere; 97 yds/106m per 1.06 oz./30g skein]; color #09 sakura pink, 7 skeins [205g]

## Tools/Notions:

- 2.5mm (approx. US B or C) crochet hook or size necessary to achieve gauge
- 1 brooch pin

## Finished measurements:

- width 31.5cm/12.4"
- length 108cm/42.5" (at longest point, 116cm/45.7")

## Gauge (10cm/4" square):

- pattern stitches A & A': 31.5 sts and 13.5 rows

*Gauge may vary according to individual crochet style. Change hook size if necessary to achieve gauge. Alternatively, rework pattern with your own gauge measurements.*

## Summary

❖**Note:** Like all Japanese patterns, stitch counts given here for foundation chains do not include any chain sts needed for turning posts.

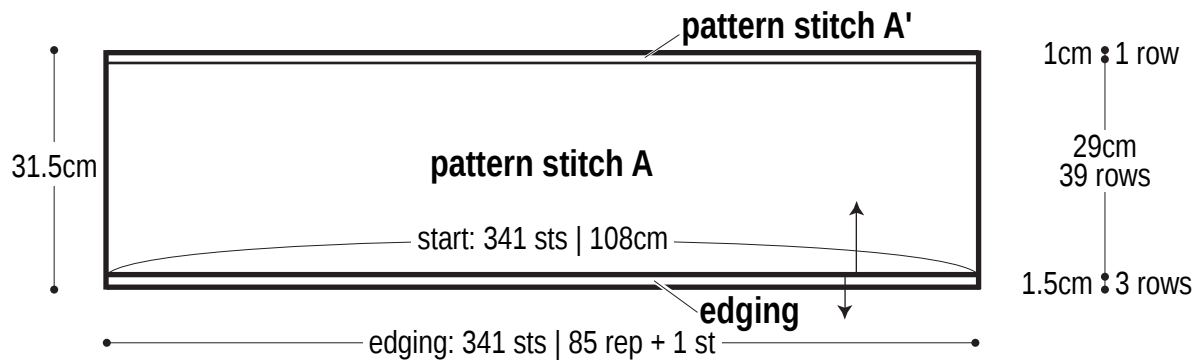
**Shawl:** Work foundation chain to begin, then work in pattern stitches A and A'. After binding off, rejoin yarn to foundation edge and work edging along edge.

**Corsage:** Crochet according to chart.

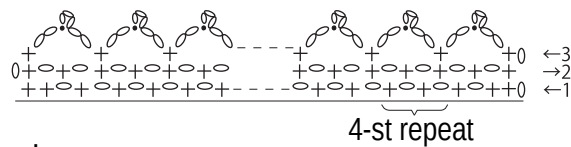
### Abbreviations:

ch = chain  
m = magic ring/circle  
rep = pattern repeat(s)  
RS = right side  
sc = single crochet (US)  
WS = wrong side

## Shawl schematic 2.5mm hook



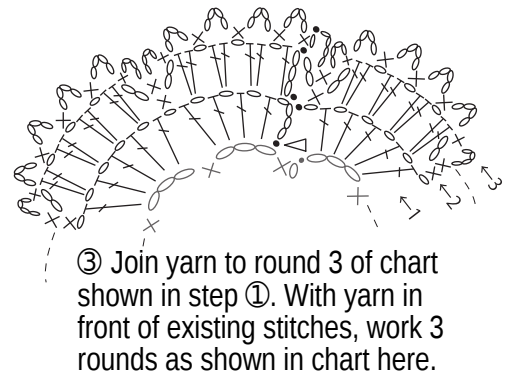
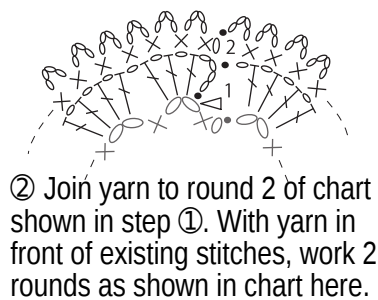
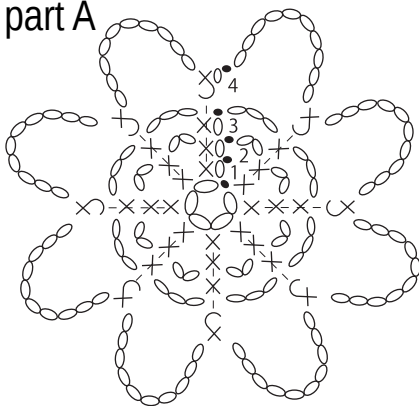
## Edging



+ or × = sc

## Corsage 2.5mm hook

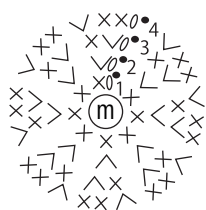
part A



◁ = join yarn

① ch5 and join into the round. Work 3 rounds according to chart. On round 4, work fp sc into sc sts on round 1.

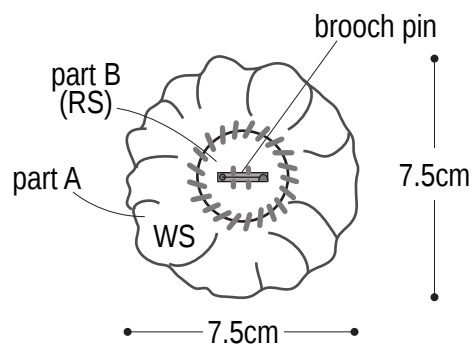
part B



④ Crochet part B.

round no.	stitch count
4	32
3	24
2	16
1	8 (Work into magic ring.)

+8 sts per round



⑤ Sew brooch pin to back of part B.

⑥ Place part B on wrong side of part A & whipstitch in place.

# Pattern stitches A & A'

