

219ss-07 Peasant Smock



Suggested yarn:

- Pierrot Yarns Cotton Neat S Relie [100% cotton; 104 yds/95m per 1.41 oz./40g skein]; color #83 rouge, 11 skeins [420g]

Tools/Notions:

- 3.3mm (approx. US 3) and 3.9mm (approx. US 6) knitting needles or size necessary to achieve gauge
- 3.0mm (approx. US C or D) crochet hook or size necessary to achieve gauge

Finished measurements:

- bust 120cm/47.2"
- cross back width 67.5cm/26.6"
- back length 49.5cm/19.5"

Gauge (10cm/4" square):

- pattern stitch A: 19 sts and 26 rows
- pattern stitch B: 20.5 sts and 26 rows

Gauge may vary according to individual knitting style. Change needle size if necessary to achieve gauge. Alternatively, rework pattern with your own gauge measurements.

Summary

Back: Cast on with long-tail cast-on method. Work in pattern stitch A. Shape raglan edges by binding off stitches when indicated and by working fully fashioned decreases at the edges.

Front: Cast on with long-tail cast-on method. Work in pattern stitch A with center panel in pattern stitch B. Shape raglan edges as for back.

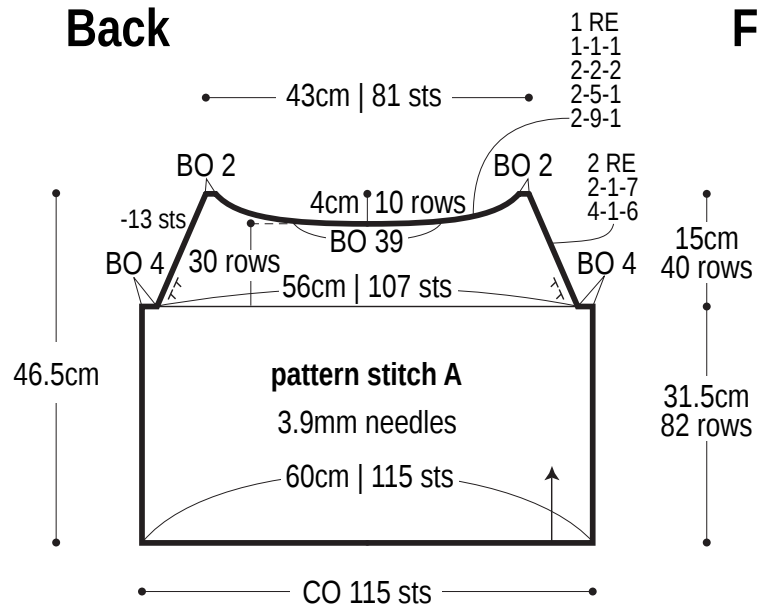
Sleeve (make 2): Cast on with long-tail cast-on method. Work in pattern stitch A. After binding off sleeve cap, pick up stitches along cuff edge and work k1p1 ribbing. Bind off in pattern.

Finishing: Seam raglan edges with mattress stitch. Seam underarm gusset with Kitchener stitch. Seam sides and sleeves with one continuous mattress stitch seam per side of body/sleeve. Crochet edging A around neckline in the round. Thread ribbon through edging (refer to finishing schematic). Crochet edging B around hem in the round.

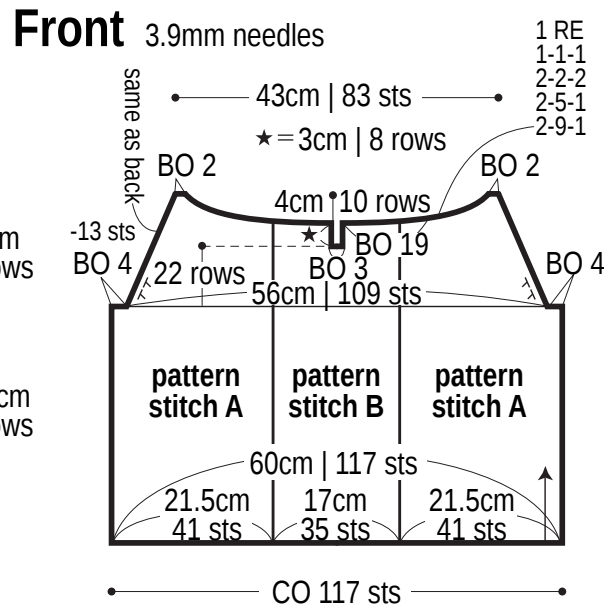
Abbreviations:

BO = bind off ch = chain stitch CO = cast on k = knit p = purl RE = row(s) even st st = stockinette stitch YO = yarn over #-#-# = rows-stitches-times

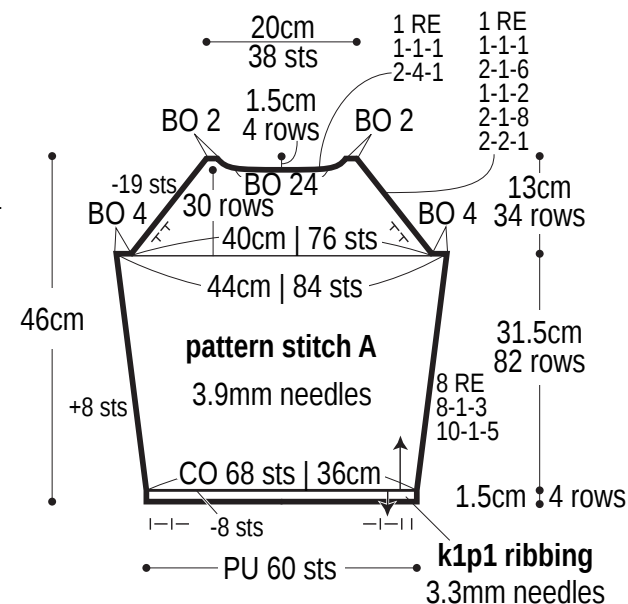
Back



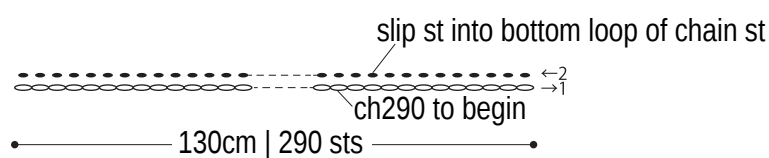
Front



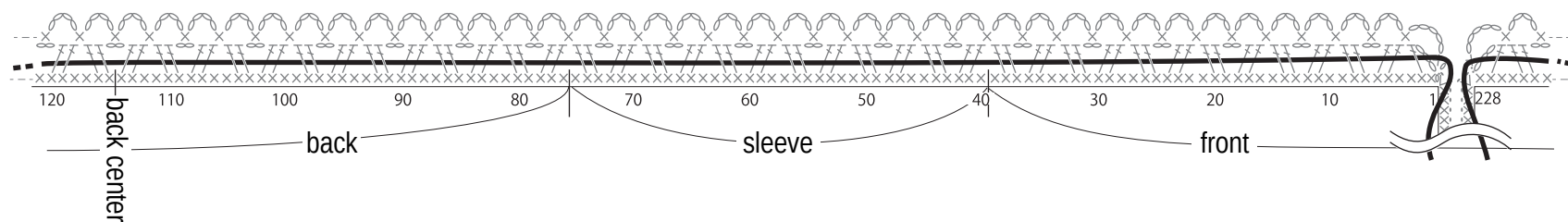
Sleeve



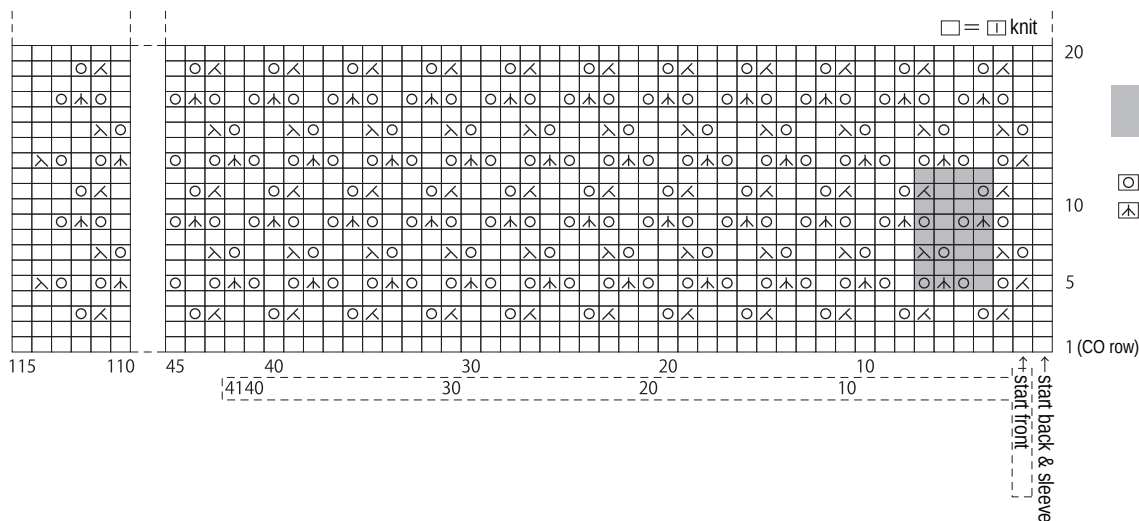
Ribbon



Instructions for threading ribbon



Pattern stitch A



■ = 4-st, 8-row repeat

○ = YO

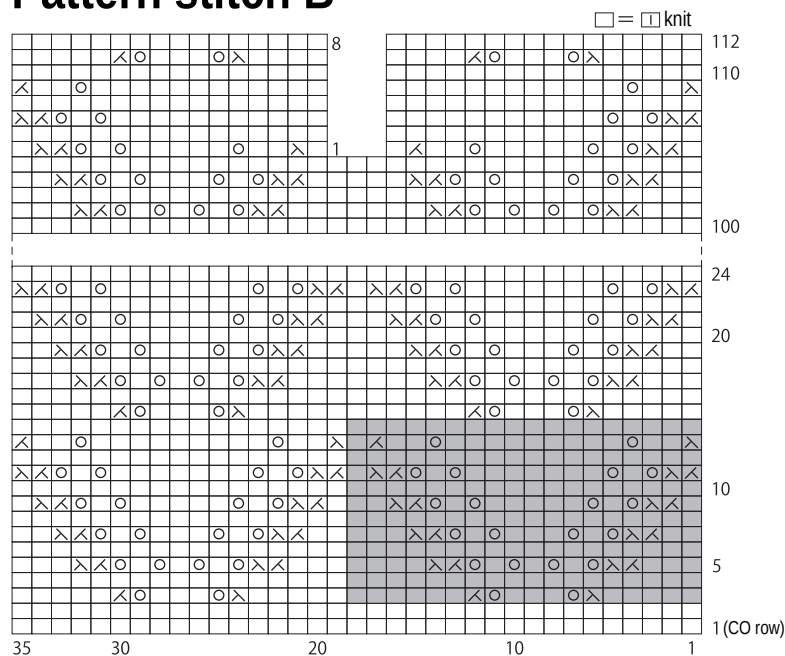
△ = center double decrease

Use QR code on smartphone to view a video tutorial about how to work the center double decrease.



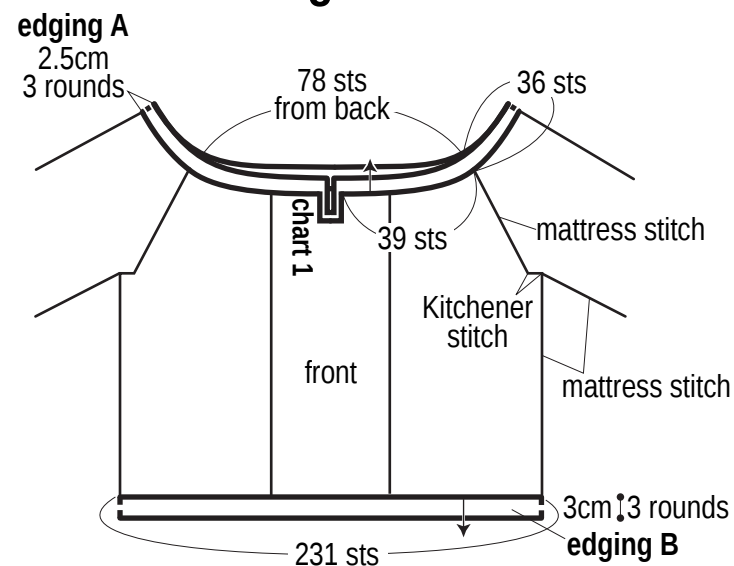
*To view on computer, search on the Pierrot Yarns website or YouTube channel instead.

Pattern stitch B

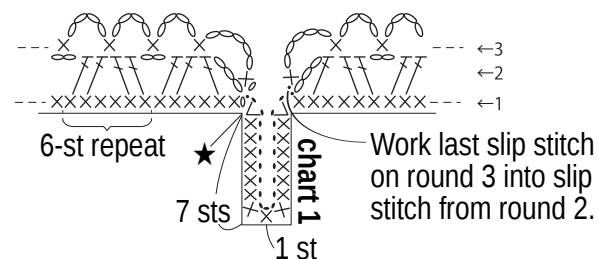


■ = 18-st, 12-row repeat

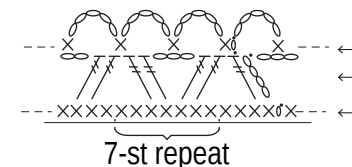
Finishing 3.0mm hook



Collar: edging A



Hem: edging B



★ = corner: 2 sts