

# 1256sw Rocco Pullover



## Suggested yarn:

- Pierrot Yarns Rocco Botanical [100% organic cotton; 87 yds/80m per 1.06 oz./30g skein]; color #10 medium roast, 12 skeins [360g]

## Tools/Notions:

- 3.0mm (US 2½) and 3.6mm (approx. US 4 or 5) knitting needles or sizes necessary to achieve gauge
- cable needle

## Finished measurements:

- bust 98cm/38.6"
- center back neck-to-cuff 73cm/28.7"
- back length 55cm/21.7"

## Gauge (10cm/4" square):

- stockinette stitch: 22.5 sts and 31 rows
- pattern stitch: 33 sts and 31 rows

*Gauge may vary according to individual knitting style. Change needle size if necessary to achieve gauge. Alternatively, rework pattern with your own gauge measurements.*

## Summary

**Back:** Cast on with long-tail cast-on method. Work in k1p1 ribbing and then in stockinette stitch.

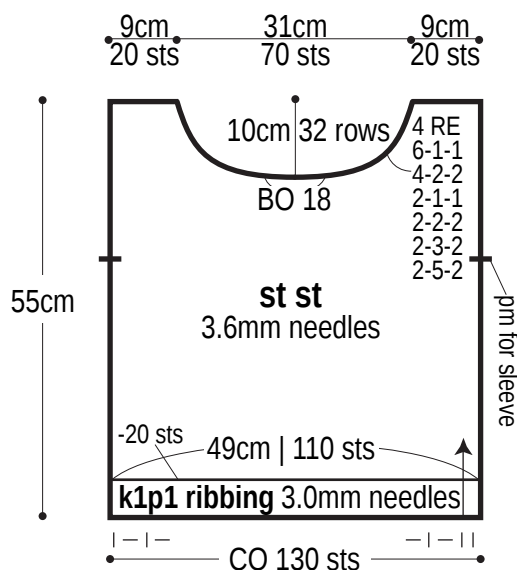
**Front, collar, and sleeves:** Cast on with long-tail cast-on method. Work in k1p1 ribbing. Then continue in stockinette stitch with a panel in pattern stitch down the front center. For front, after binding off shoulder, continue working collar (working right and left sides separately).

**Finishing:** Seam shoulders with crochet slip stitch seam. Seam sleeves to body with crochet slip stitch seam. Seam sleeves and sides with mattress stitch. Seam center back collar with Kitchener stitch (graft knit stitches as knit stitches and purl stitches as purl stitches). Seam collar to back neckline with stitches-to-rows mattress stitch.

## Abbreviations:

BO = bind off  
CO = cast on  
k = knit  
p = purl  
pm = place marker  
RE = row(s) even  
st st = stockinette stitch  
#-#-# = rows-stitches-times

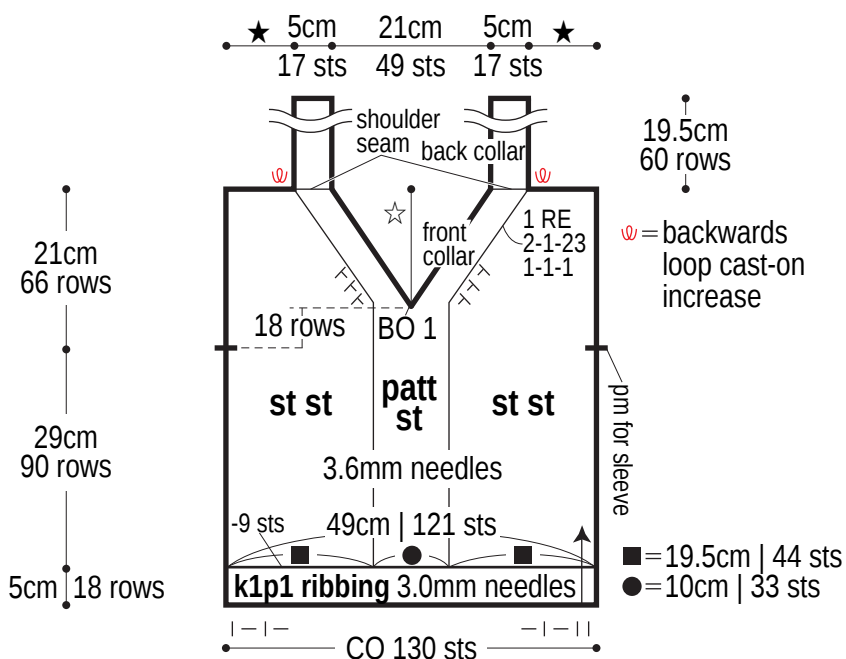
## Back



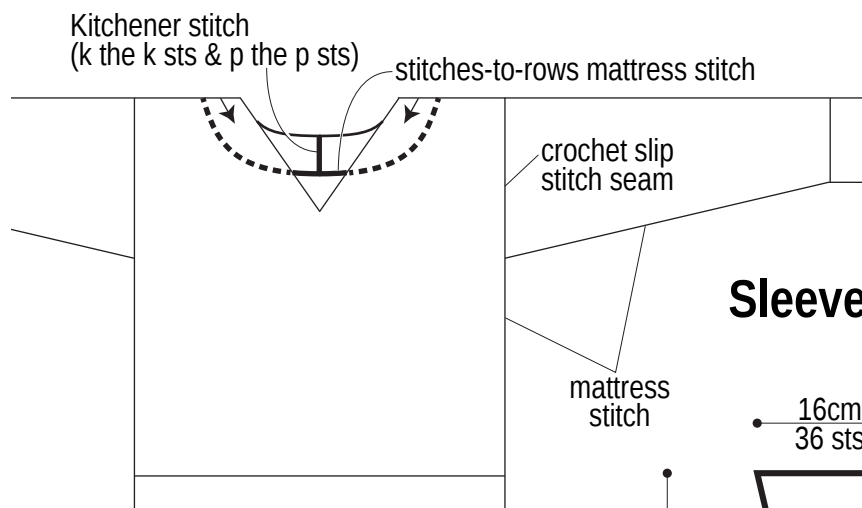
## Front & collar

★ = 9cm | 20 sts

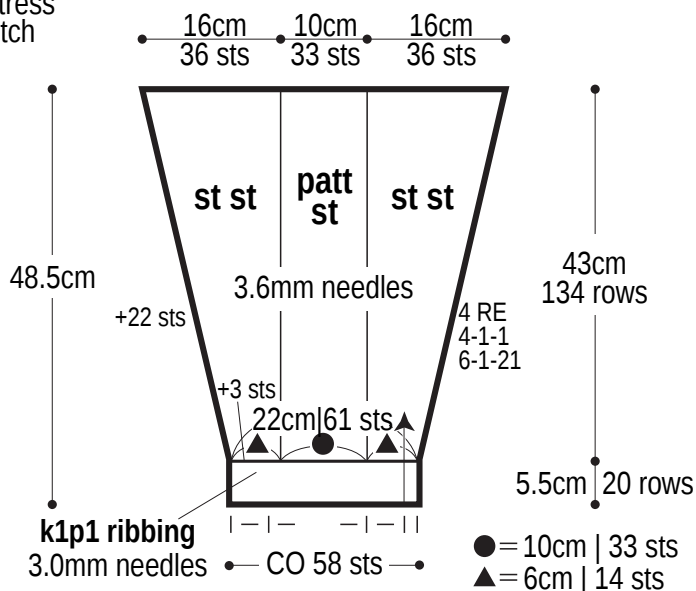
☆ = 15.5cm | 48 rows



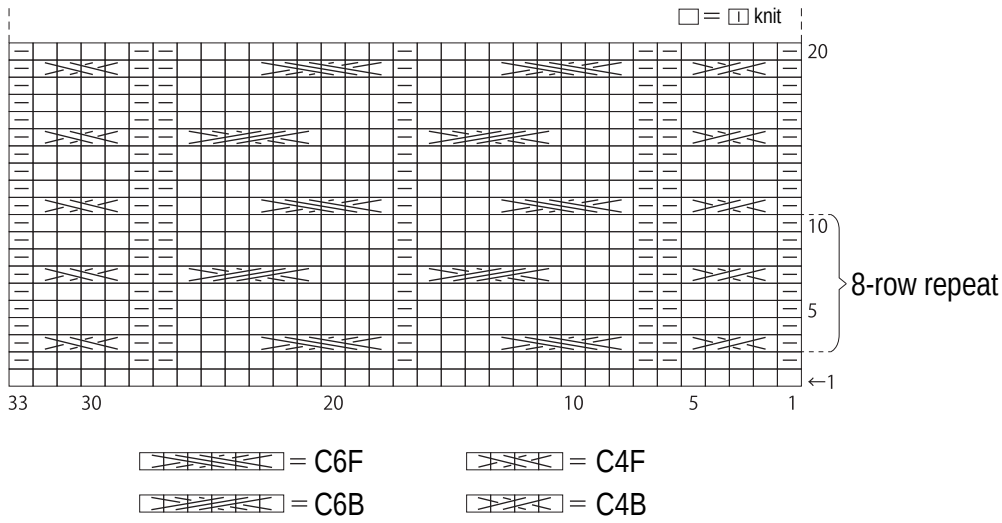
## Finishing



## Sleeve



# Pattern stitch



## Collar

※Reverse decrease  
shaping of right collar  
for left collar.

