

tricot14-6 Merisilk Shawl



Suggested yarn:

- Keito-Zakka Stores Merisilk [80% merino wool, 20% silk; 273 yds/250m per 1.76 oz./50g skein]; color #2 Iceland, 3 skeins [135g]

Tools/Notions:

- 3.3mm (approx. US 3) knitting needles or size necessary to achieve gauge
- 2.3mm (approx. US B) crochet hook or size necessary to achieve gauge

Finished measurements:

- Please see schematic.

Gauge (10cm/4" square):

- pattern stitch: 18.5 sts and 37 rows

Gauge may vary according to individual knitting style. Change needle size if necessary to achieve gauge. Alternatively, rework pattern with your own gauge measurements.

Summary

Body of scarf: Cast on with long-tail cast-on method. Work in pattern stitch while decreasing one edge of the scarf as shown in chart and schematic. Bind off.

Finishing: Crochet 2 rounds of edging around the outside of the shawl.

Abbreviations:

BO = bind off

CO = cast on

k2tog = knit 2 stitches together

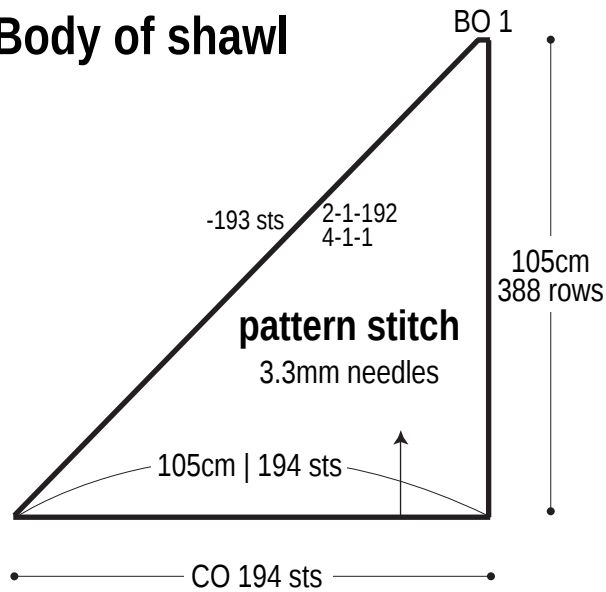
rep = pattern repeat(s)

sc = single crochet stitch (US)

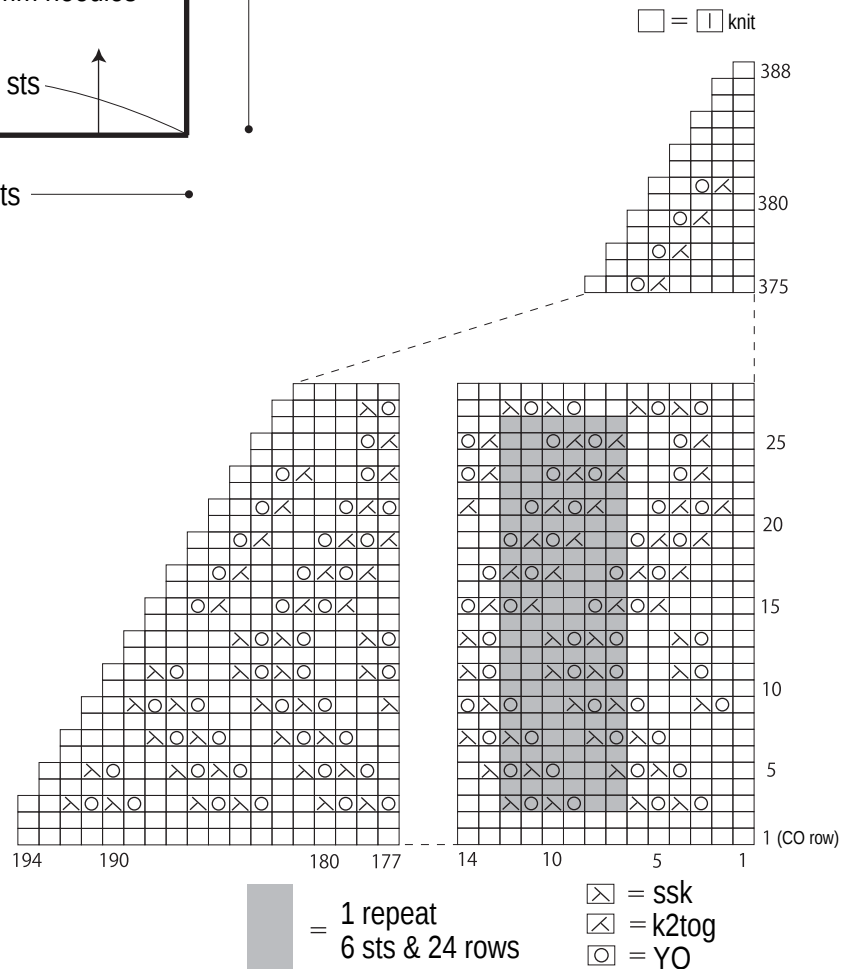
ssk = slip (knitwise), slip (knitwise), knit the two slipped stitches together

#-#-# = rows-stitches-times

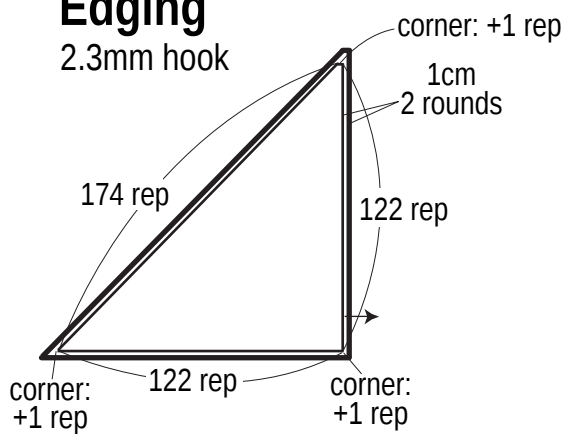
Body of shawl



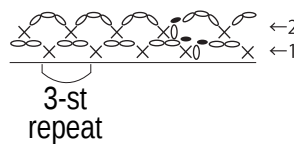
Pattern stitch



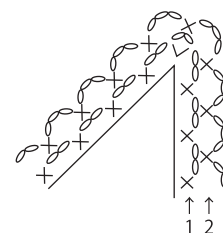
Edging



Edging



Edging: corner



✓ = work 2 sc into same stitch