

218w-08 Elena Pullover



Suggested yarn:

- Pierrot Yarns Elena [98% merino wool, 1% nylon, 1% polyester; 67 yds/61m per 1.06 oz./30g skein]; color #02 silver gray, 21 skeins [605g]

Tools/Notions:

- 5.0mm (US H) crochet hook or size necessary to achieve gauge
- 3.9mm (approx. US 6) knitting needles or size necessary to achieve gauge

Finished measurements:

- bust 94cm/37.0"
- cross back width 47cm/18.5"
- back length 57cm/22.4"
- sleeve length 61cm/24.0"

Gauge (10cm/4" square):

- pattern stitch: 21.5 sts and 8 rows

Gauge may vary according to individual crochet style. Change hook size if necessary to achieve gauge. Alternatively, rework pattern with your own gauge measurements.

Summary

✳️**Note:** Like all Japanese patterns, stitch counts given here for foundation chains do not include any chain sts needed for turning posts.

Body (make 2): With crochet hook, work foundation chain to begin. Work body in pattern stitch. With knitting needles, pick up stitches along hem edge; work hem welt in k1p1 ribbing. Bind off in pattern.

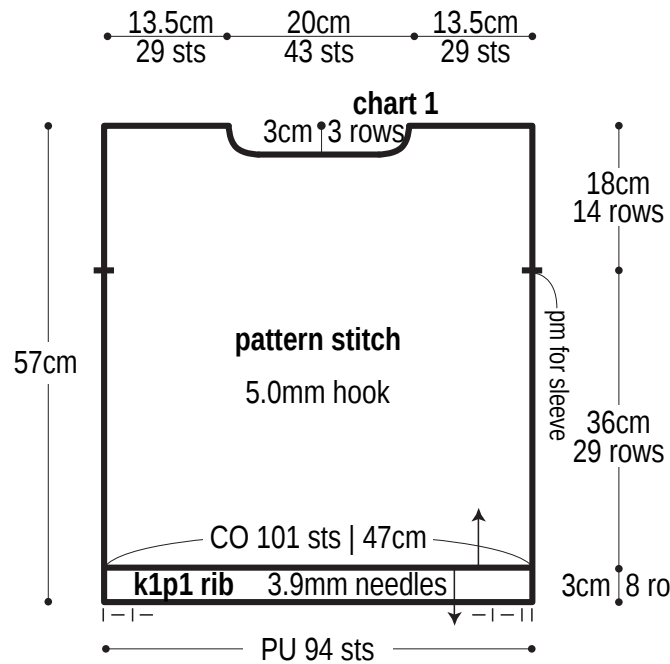
Sleeve (make 2): With crochet hook, work foundation chain to begin. Work sleeve in pattern stitch. With knitting needles, pick up stitches along cuff edge; work cuff in k1p1 ribbing. Bind off in pattern.

Finishing: Seam shoulders with crochet chain seam (alternating chain st and slip st as needed to maintain pattern). Seam sleeves to body with chain seam. Seam sides of body and sleeve undersides with chain seam (one continuous seam per side of body/sleeve). With knitting needles, pick up stitches around neckline; work collar in k1p1 ribbing in the round. Bind off in pattern.

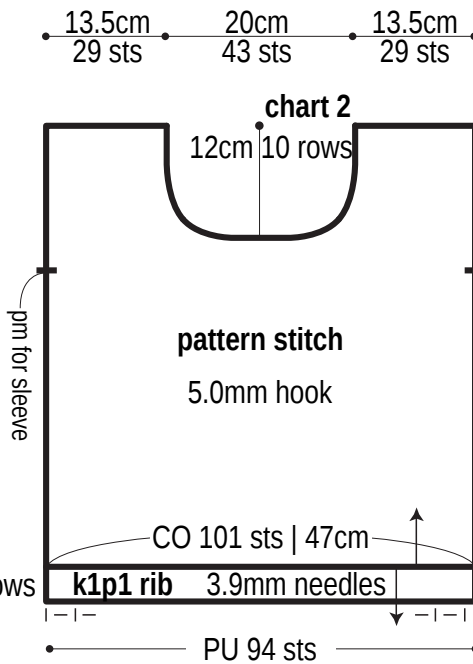
Abbreviations:

ch = chain dc = double crochet (US) k = knit p = purl pm = place marker PU = pick up sc = single crochet (US)

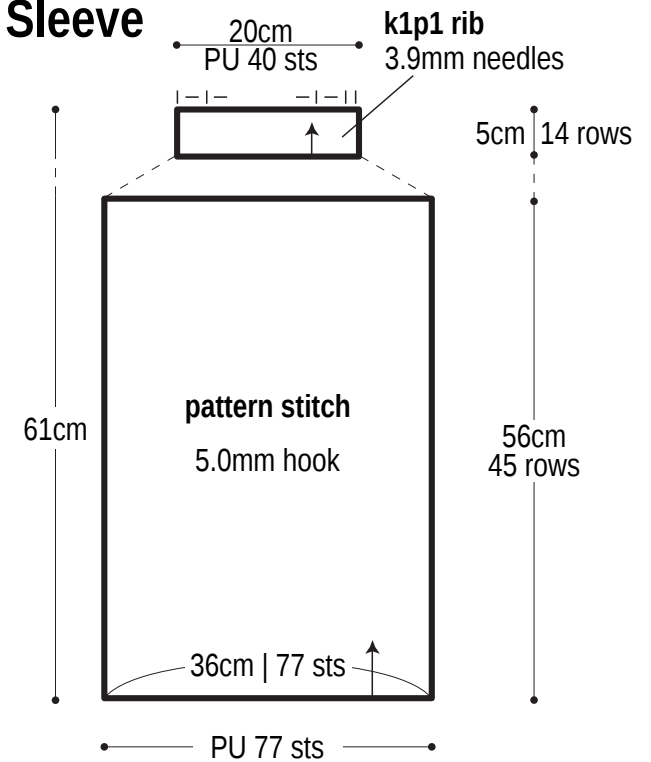
Back



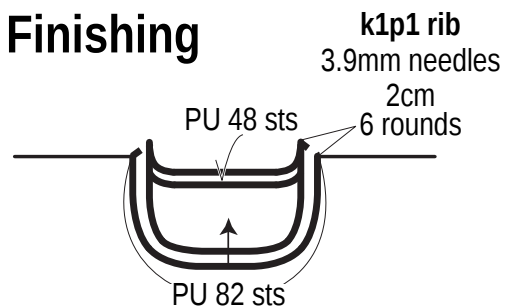
Front



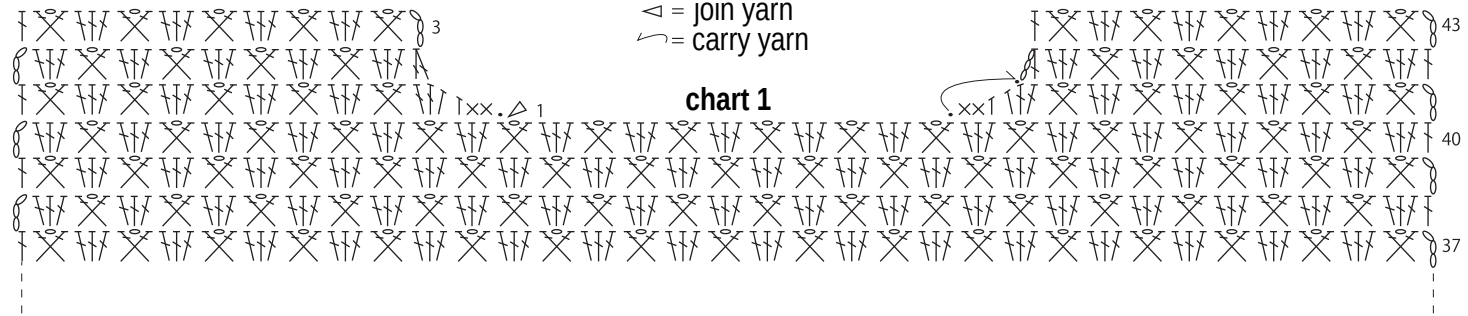
Sleeve



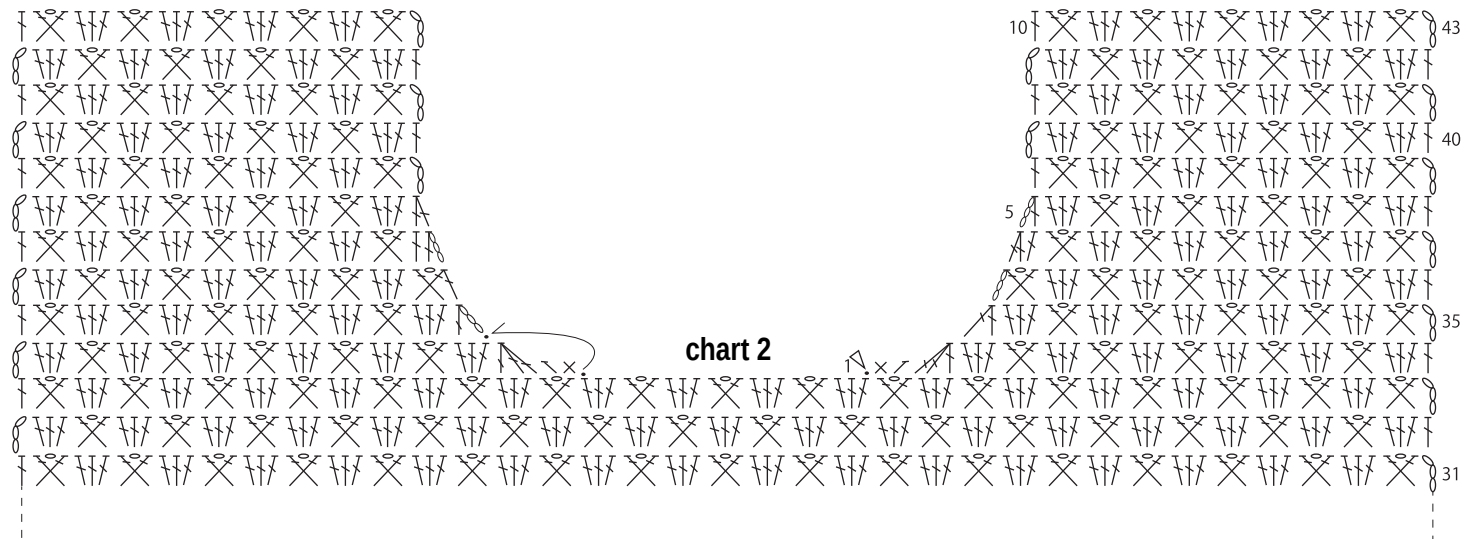
Finishing



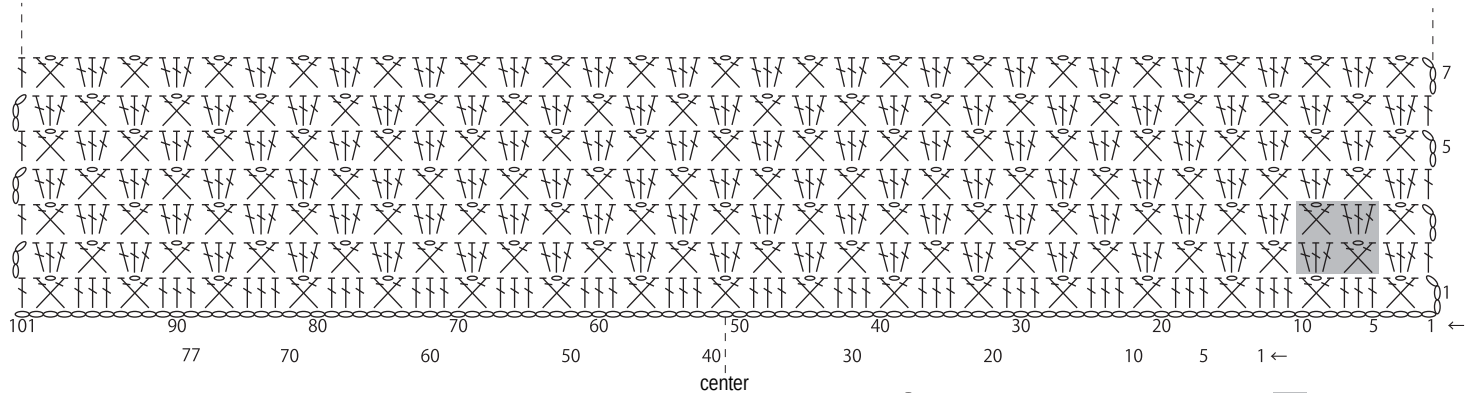
Back



Front



Pattern stitch



△ = dc, ch1, dc cable stitch

■ = 6=st, 2-row repeat