

218aw-03 Flare-sleeve Sweater



Suggested yarn:

- Pierrot Yarns Macon [70% alpaca, 30% nylon; 80yds/73m per 0.88 oz./25g skein]; color #22 beige gray, 12 skeins [300g]

Tools/Notions:

- 4.5mm (US 7) knitting needles or size necessary to achieve gauge

Finished measurements:

- bust 90cm/35.4"
- center back neck-to-cuff 71.5cm/28.2"
- back length 52cm/20.5"

Gauge (10cm/4" square):

- pattern stitch: 16 sts and 32 rows

Gauge may vary according to individual knitting style. Change needle size if necessary to achieve gauge. Alternatively, rework pattern with your own gauge measurements.

Summary

Body (make 2): Cast on with long-tail cast-on method. Work in pattern stitch. After making second body piece, seam shoulders with crochet slip stitch seam.

Sleeve (make 2): Pick up stitches for sleeves between markers and sleeve seams. Work collar in pattern stitch. Bind off.

Finishing: Seam each side of body/sleeve with one continuous mattress stitch seam.

Abbreviations:

BO = bind off

CO = cast on

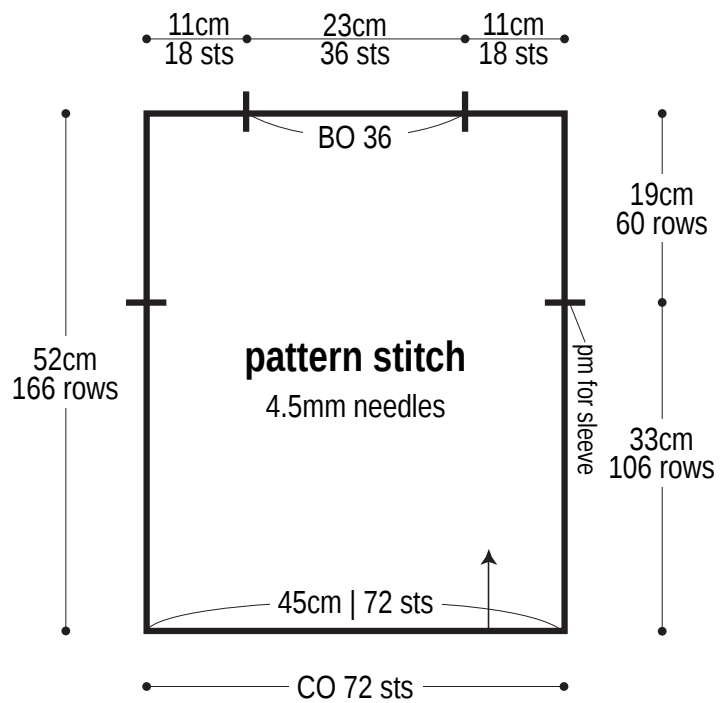
pm = place marker

PU = pick up

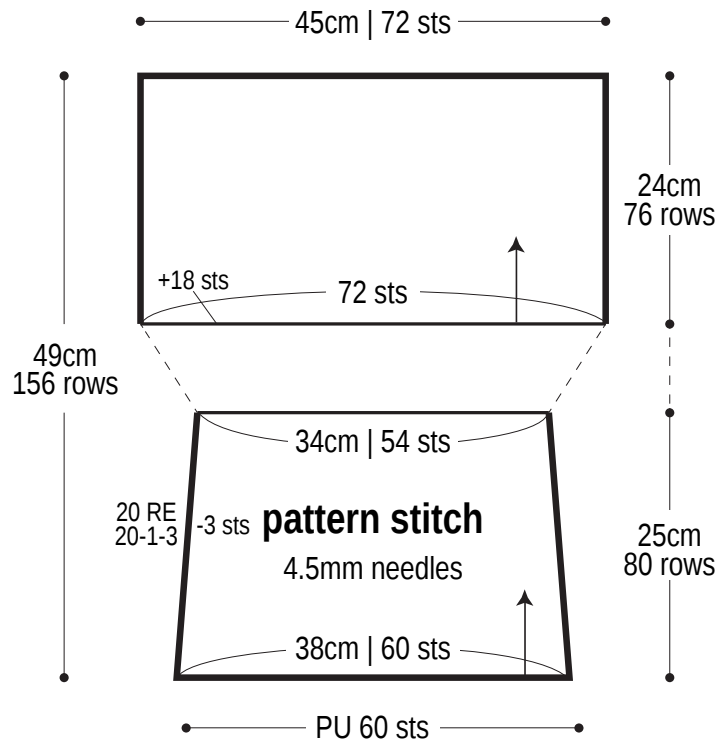
RE = row(s) even

#-#-# = rows-stitches-times

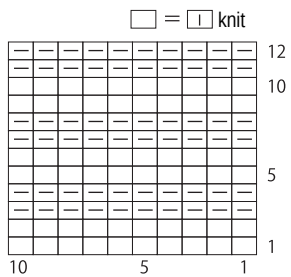
Body (make 2)



Sleeve (make 2)



Pattern stitch



Finishing

