

# 218w-07 Block Design Pullover



## Suggested yarn:

- Pierrot Yarns Lowry [88% merino wool, 12% cashmere; 65 yds/59m per 1.41 oz./40g skein]; color #05 ash gray, 18 skeins [690g]

## Tools/Notions:

- 5.4mm (approx. US 9) knitting needles or size necessary to achieve gauge

## Finished measurements:

- center back neck-to-cuff 72cm/28.4"
- back length 50cm/19.7"

## Gauge (10cm/4" square):

- pattern stitch: 19.5 sts and 24 rows

*Gauge may vary according to individual knitting style. Change needle size if necessary to achieve gauge. Alternatively, rework pattern with your own gauge measurements.*

## Summary

**Back & front (make 2 identical):** Cast on with long-tail cast-on method. Work in pattern stitch and then in garter stitch. Bind off. After working both front and back, seam shoulders with mattress stitch.

**Finishing:** Pick up stitches along cuff edge; work cuff in garter stitch. Bind off. Repeat for other sleeve. Seam sleeves and sides of body with one continuous mattress stitch seam (per side of body/sleeve).

## Abbreviations:

blco = backwards-loop cast-on increase

BO = bind off

CO = cast on

PU = pick up

# Pattern stitch

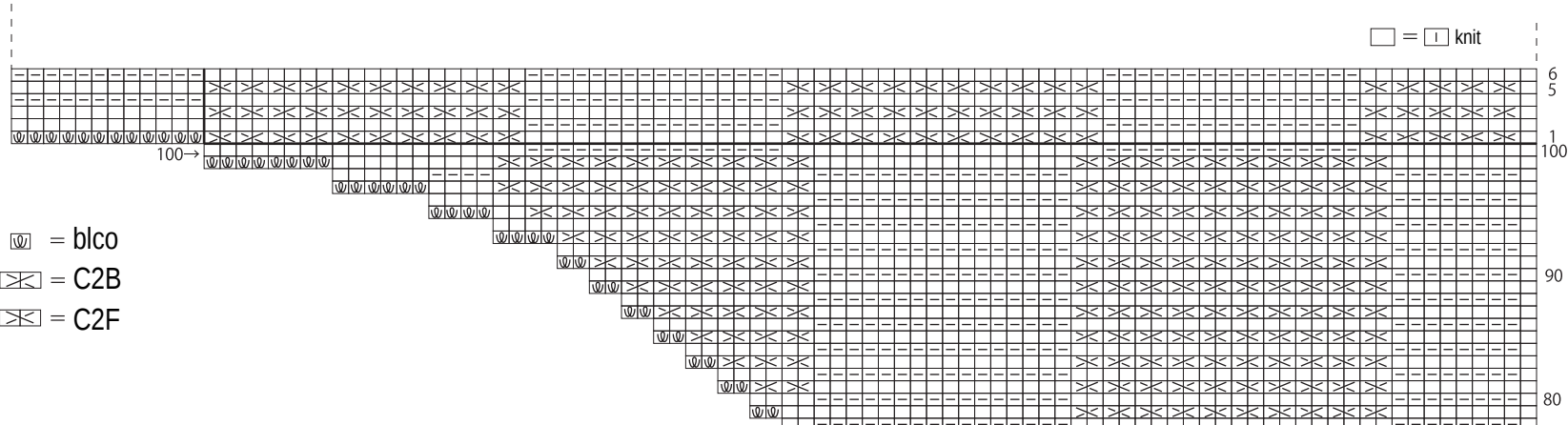
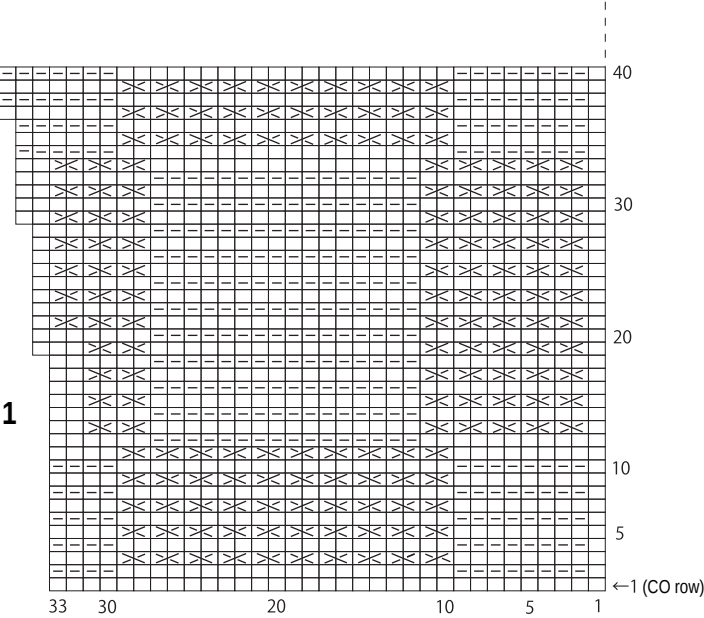
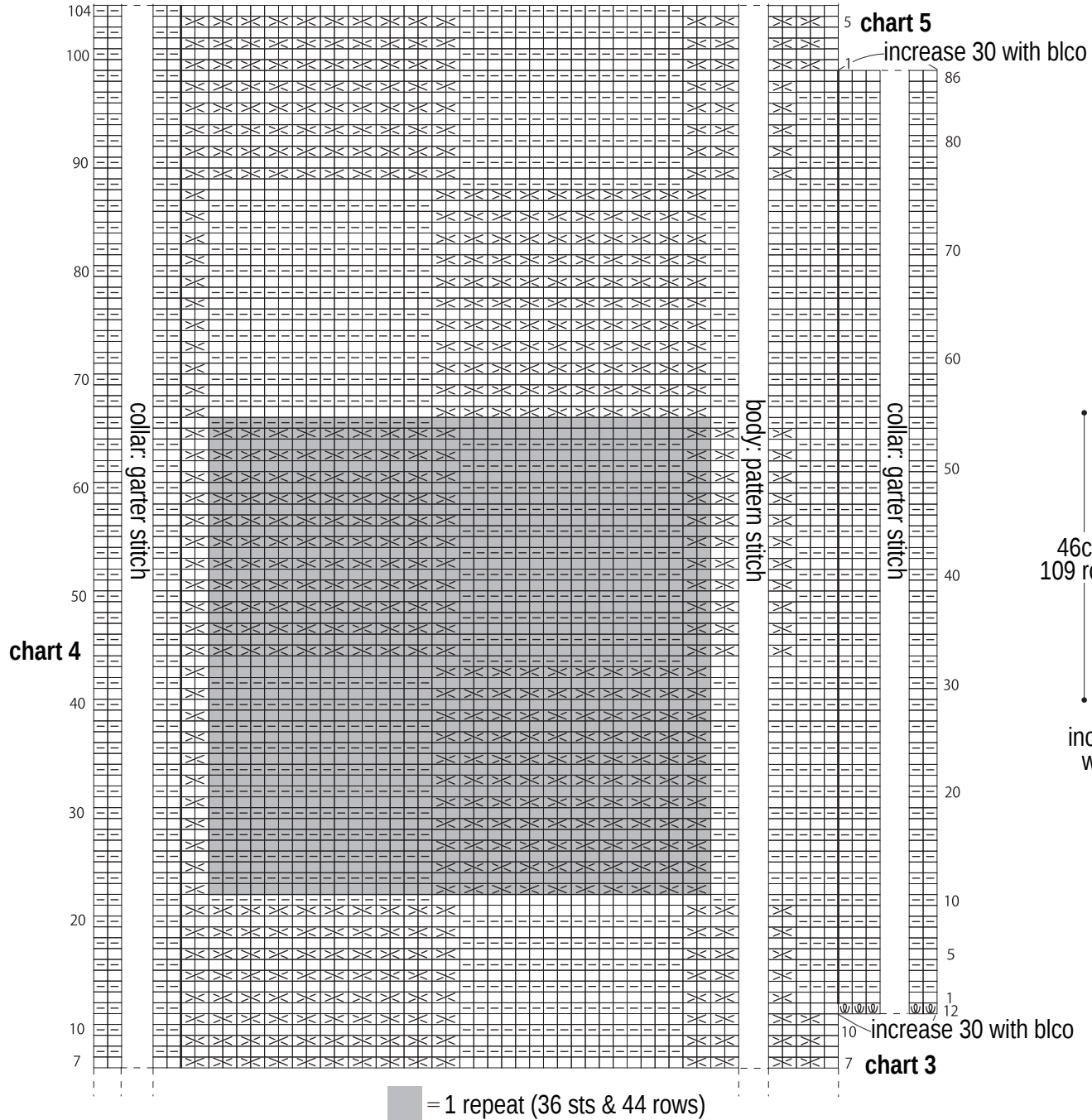


chart 2

chart 1



## Pattern stitch



## Sweater

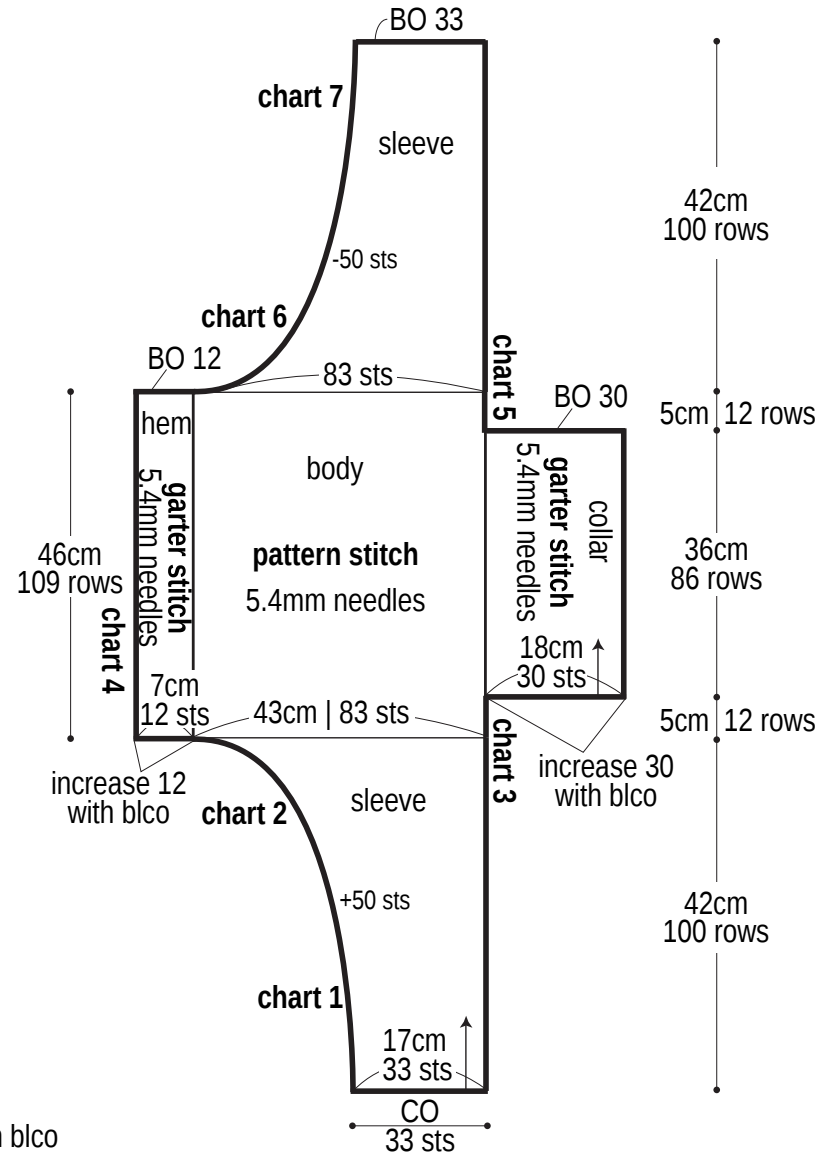
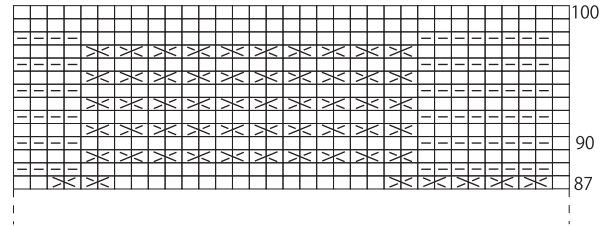


chart 7



*continued from previous page*

□ = □ knit

## Finishing

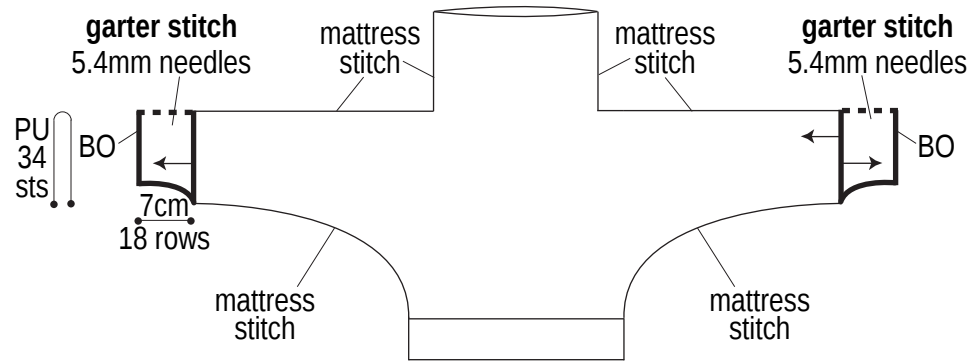


chart 6

