

tricot14-3 Argyle Sweater



Suggested yarn:

- Keito-Zakka Stores Fuwari [88% acrylic, 12% mohair; 71 yds/65m per 1.41 oz./40g skein]; color #01 milk white, 2 skeins [80g]
- Keito-Zakka Stores Atelier Wool Aran [100% wool; 83 yds/76m per 1.41 oz./40g skein]; color #64 indigo gray, 10 skeins [400g]

Tools/Notions:

- 6.0mm (US 10) and 6.6mm (approx. 10½) knitting needles or sizes necessary to achieve gauge

Finished measurements:

- bust 82cm/32.28"
- center back neck-to-cuff 72cm/28.35"
- back length 54.5cm/21.46"

Gauge (10cm/4" square):

- stranded pattern stitch: 14 sts and 16 rows
- stockinette stitch: 14 sts and 16 rows

Gauge may vary according to individual knitting style. Change needle size if necessary to achieve gauge. Alternatively, rework pattern with your own gauge measurements.

Summary

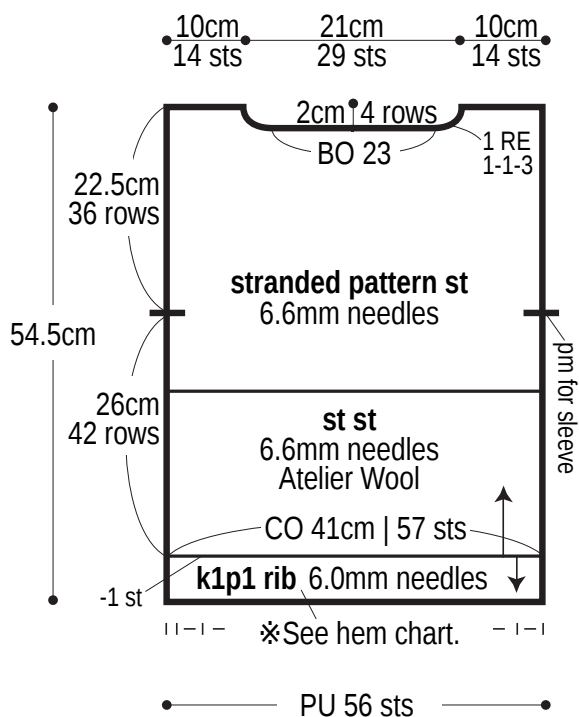
Body & sleeves: Cast on with long-tail cast-on method. Work in st st and stranded pattern stitch according to schematics. Pick up stitches from cast-on edge; work k1p1 ribbing and then bind off in pattern.

Finishing: Seam shoulders with crochet slip stitch seam. Pick up stitches around neckline; work collar in k1p1 ribbing in the round. Bind off in pattern. Seam sleeves to body with crochet slip stitch seam. Seam sides and sleeve undersides with mattress stitch.

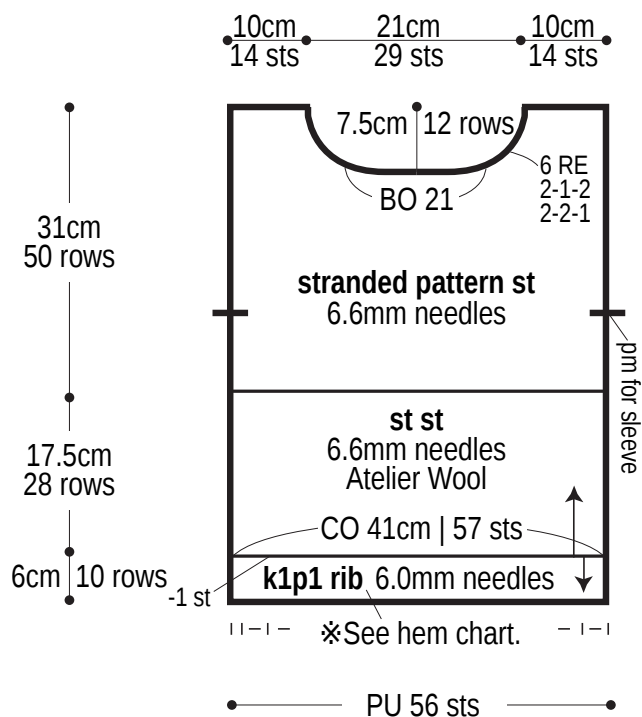
Abbreviations:

BO = bind off
CO = cast on
k = knit
p = purl
pm = place marker
PU = pick up
RE = row(s) even
st st = stockinette stitch
#-#-# = rows-stitches-times

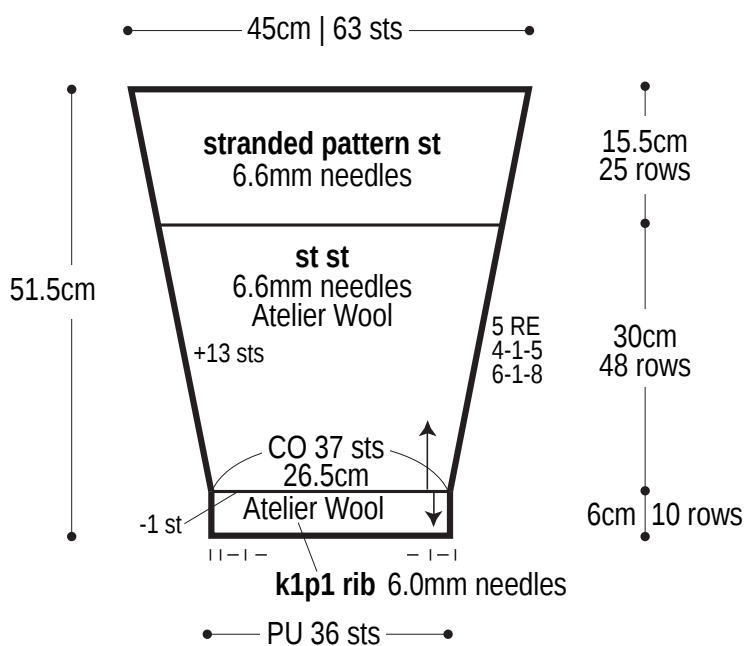
Back



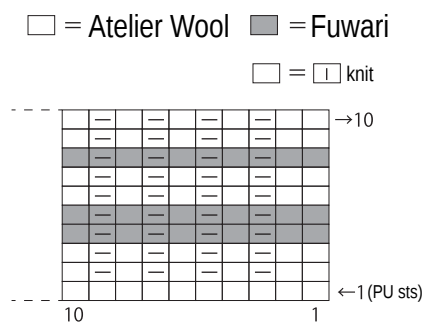
Front



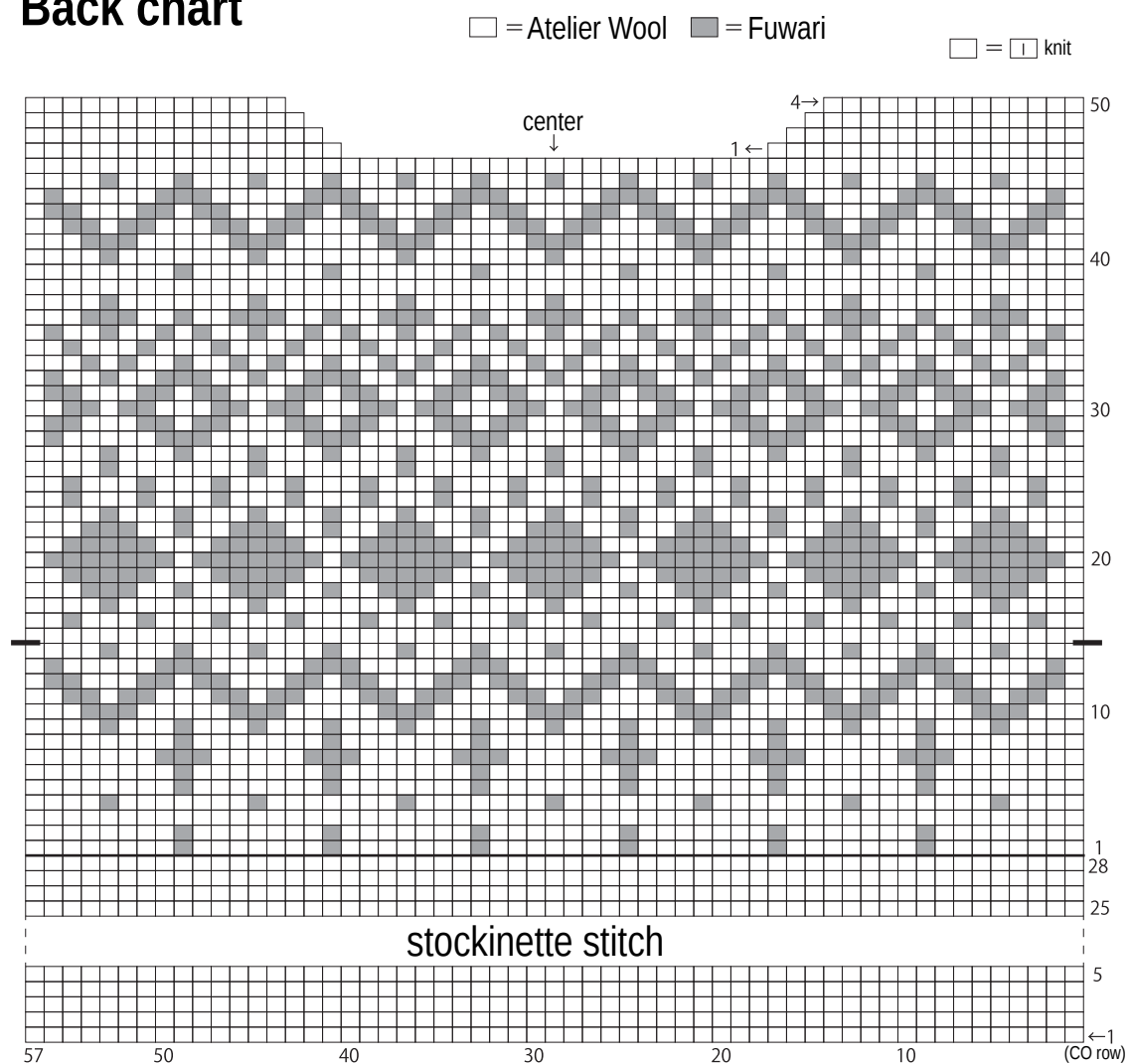
Sleeve



Hem chart

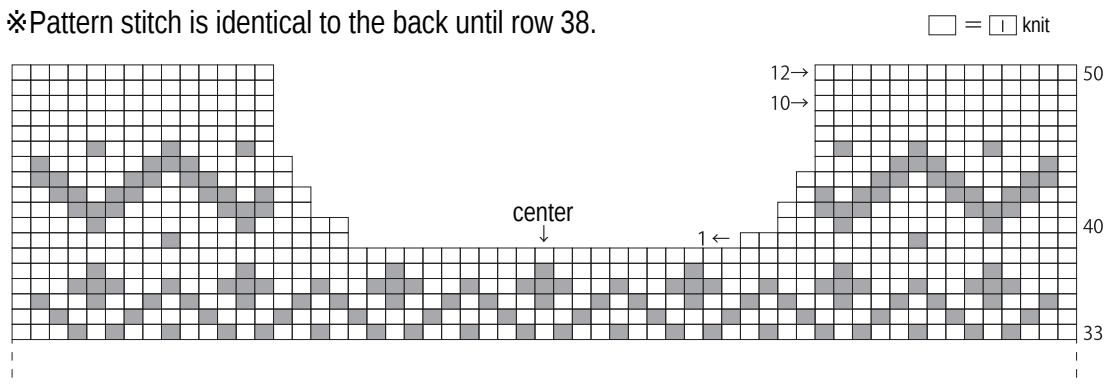


Back chart

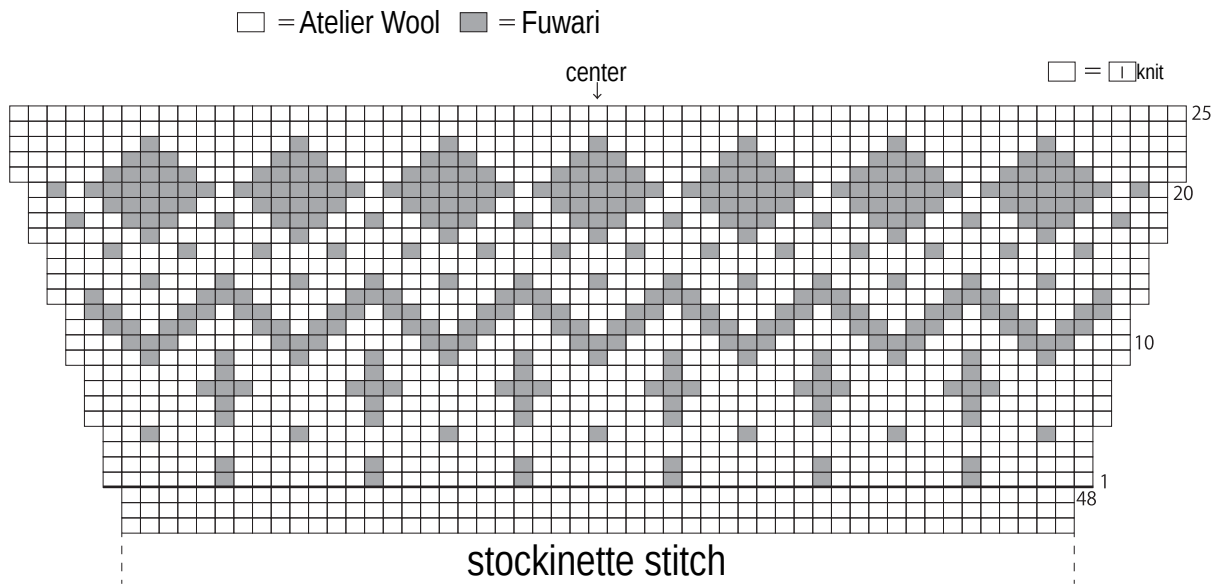


Front chart

※Pattern stitch is identical to the back until row 38.



Sleeve chart



Finishing

k1p1 ribbing
6.0mm needles
Atelier Wool

