

Christmas Rose Ornaments



Suggested yarn:

- Keito-Zakka Stores Christmas Rose [100% acrylic; 60 yds/55m per 1.41 oz./40g skein];
 - wreath:
 - color #07 deep green, 1 skein [7g]
 - color #09 marigold, 1 skein [3g]
 - colors #06 off-white and #10 ruby red, 1 skein each [small amount]
 - candy cane version A:
 - color #06 off-white, 1 skein [2.5g]
 - color #11 neon pink, 1 skein [6g]
 - candy cane version B:
 - color #06 off-white, 1 skein [4g]
 - color #11 neon pink, 1 skein [3.5g]
 - Christmas stocking:
 - color #06 off-white, 1 skein [3g]
 - color #09 marigold, 1 skein [7g]
 - ball ornament:
 - colors #03 smoky aqua, #06 off-white, #07 deep green, #09 marigold, #10 ruby red, #11 neon pink, 1 skein each [2.5g each color]
 - Jingle bell version A:
 - color #03 smoky aqua, 1 skein [1.5g]
 - color #06 off-white, 1 skein [3.5g]
 - Jingle bell version B:
 - color #03 smoky aqua, 1 skein [3.5g]
 - color #06 off-white, 1 skein [1.5g]

Tools/Notions:

- 4.0mm (US G) crochet hook or size necessary to achieve gauge
- wreath: Christmas bell decoration
- candy cane: aluminum wire: (2mm/0.08" diameter, 10cm/4" long)
- candy cane & ball ornaments: small amount polyfiber stuffing

Finished measurements:

- wreath: diameter 9cm/3.54"
- others: please see finishing schematics

Gauge may vary according to individual crochet style. Change hook size if necessary to achieve desired results. Alternatively, rework pattern with your own gauge measurements.

Summary

❖ **Note:** Like all Japanese patterns, stitch counts given here for foundation chains do **not** include any chain sts needed for turning posts.

Wreath & flowers: Crochet according to charts. Seam flowers to wreath. Fasten bell decoration to bottom of wreath.

Candy cane: For either version A or B, work magic ring to begin, then work in sc and sc tbl. On last round, insert wire and stuffing. Cut yarn and thread tail through all remaining sts on last round. Cinch end of candy cane shut.

Ball ornament: Work magic ring to begin, then work according to chart, increasing and decreasing as indicated while also changing color every two rounds. After working last round, insert stuffing. Cut yarn and thread tail through all remaining sts. Fasten loop to ornament.

Christmas stocking: Work magic ring to begin, then work 7 rounds according to chart, increasing as indicated. Begin working back-and-forth in rows on row 8 to form heel. After shaping heel, resume working in the round (cuff section). Bind off. Embroider round 15 as shown in finishing schematic. Attach ribbon and loop to back side of stocking.

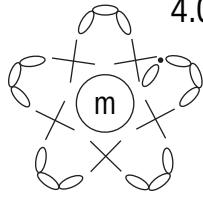
Bell: For part 1, work magic ring to begin, then work in sc, increasing as indicated. Work 1 round of edging. Begin part 2 as for part 1. Work in sc, increasing as indicated. After last round, cut yarn leaving 15cm/5.91" yarn tail. Thread tail through all sts of last round. Cinch bell shut. Seam part 2 to the start (magic ring) of part 1, leaving 3cm/1.18" of tail between the clapper and the top of the bell (see finishing schematic). With 2 strands of yarn held together, tie a bow and attach to bell as shown.

Abbreviations:

ch = chain hdc = half double crochet (US) m = magic ring/circle sc = single crochet (US)
tbl = through back loop only YO = yarn over

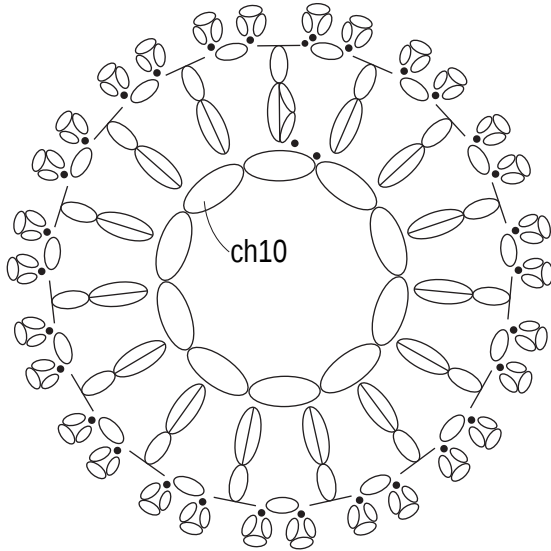
Flower (make 5)

4.0mm hook, color #09

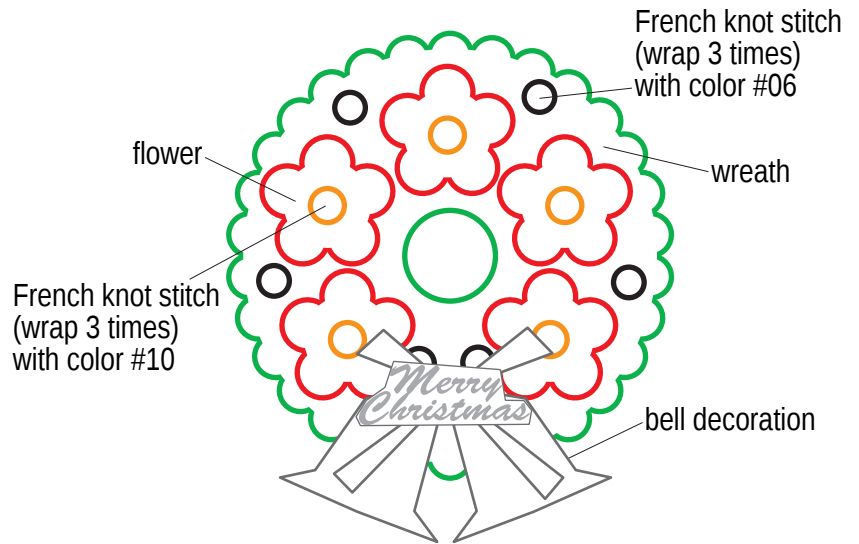



Body of wreath

4.0mm hook, color #07



Wreath finishing

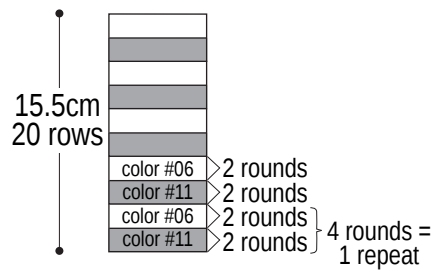


 = hdc + sc bobble

(*YO and insert hook into indicated location; pull up a loop*; repeat from * to * 3 times. YO and pull through all but one loop on hook. YO and pull through both loops on hook.)

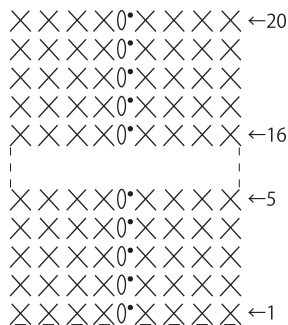
Version A: color #11

Version B: as follows:



Candy cane

4.0mm hook

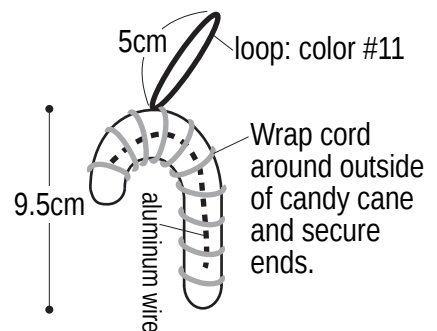


round no.	stitch count
20	8 sts
~	~
2	8 sts
1	8 sts (Work into magic ring.)

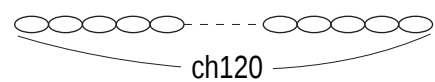
} work even

Candy cane finishing

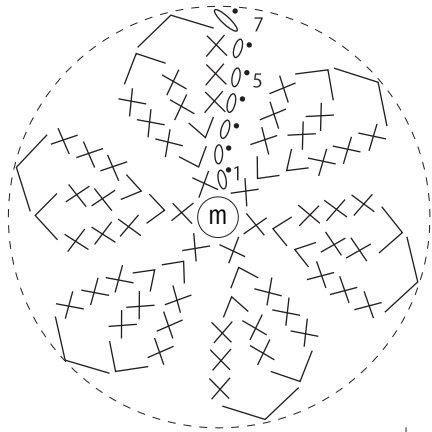
version A



version A: color #06, 4.0mm hook



Ball ornament 4.0mm hook

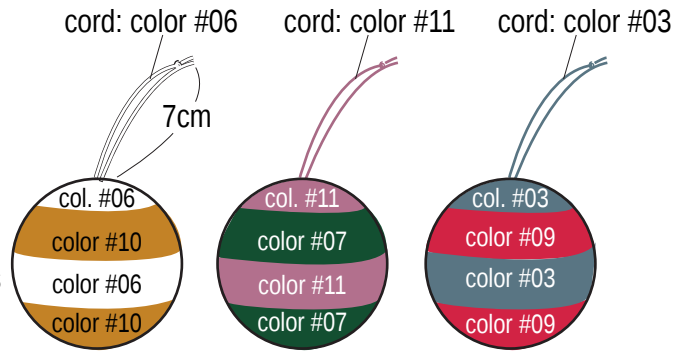


4.5cm
7 rounds

round no.	stitch count
7	6
6	12
5	18
4	18
3	18
2	12
1	6 (Work into magic ring.)

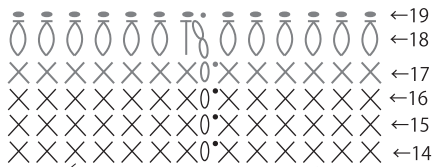
} -6 sts
} work even
} +6 sts

Finishing

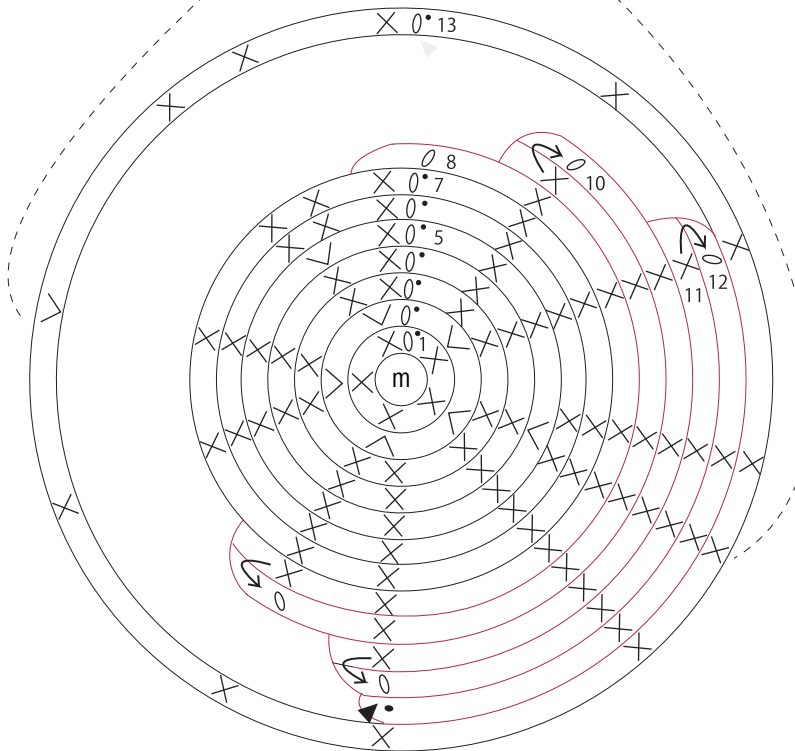


*Change color every 2 rounds as shown.

Stocking 4.0mm hook



◁ = join yarn
◀ = cut yarn



o = 2-hdc cluster stitch

Finishing



Cross-stitch each st on round 15 with color #06.

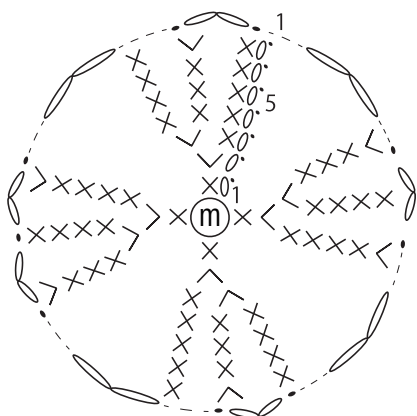
With 1 strand each of colors #06 and #09, tie a bow and secure to stocking.

9.5cm
19 rounds

round no.	stitch count
slip stitch: 19	13
hdc clusters: 18	13
17	13
16	13
~	13
13	13 (+10 sts)
12	3
11	4
10	5
9	6
8	7 (-5 sts)
7	12
6	12
5	12 (+2 sts)
4	10
3	10
2	10 (+5 sts)
1	5 (Work into magic ring.)

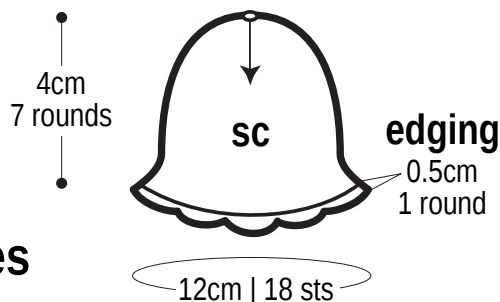
} work even color #06
} color #09
heel {

Bell part 1 chart



Bell part 1

4.0mm hook version A: color #06
version B: color #03

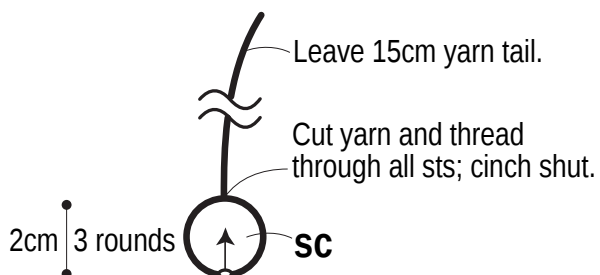


Part 1 increases

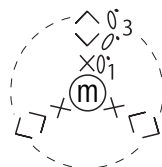
round no.	stitch count
7	18 (+6 sts)
6	12
~	~ } work even
3	12 (+4 sts)
2	8 (+4 sts)
1	4 (Work into magic ring.)

Bell part 2

4.0mm hook version A: color #03
version B: color #06



Bell part 2 chart



Part 2 increases

round no.	stitch count
3	3 (-3 sts)
2	6 (+3 sts)
1	3 (Work into magic ring.)

Finishing

