

218aw-01 Three-quarter Sleeve Cardigan



Suggested yarn:

- Pierrot Yarns Junmo Chuboso / Pure Wool Fingering [60% punta wool, 40% merino wool; 164 yds/150m per 1.41 oz./40g skein]; color #420 deep red, 8 skeins [305g]

Tools/Notions:

- 2.3mm (approx. US B) crochet hook or size necessary to achieve gauge
- 3.0mm (US 2½) straight knitting needles or size necessary to achieve gauge
- 3.0mm (US 2½) double-pointed knitting needles or size necessary to achieve gauge
- 4 buttons (15mm/0.59")

Finished measurements:

- bust 102.5cm/40.35"
- cross back width 59cm/23.23"
- back length 50cm/19.69"

Gauge (10cm/4" square):

- pattern stitch: 35.5 sts and 11 rows

Gauge may vary according to individual crochet style. Change hook size if necessary to achieve gauge. Alternatively, rework pattern with your own gauge measurements.

Summary

✳️**Note:** Like all Japanese patterns, stitch counts given here for foundation chains do not include any chain sts needed for turning posts.

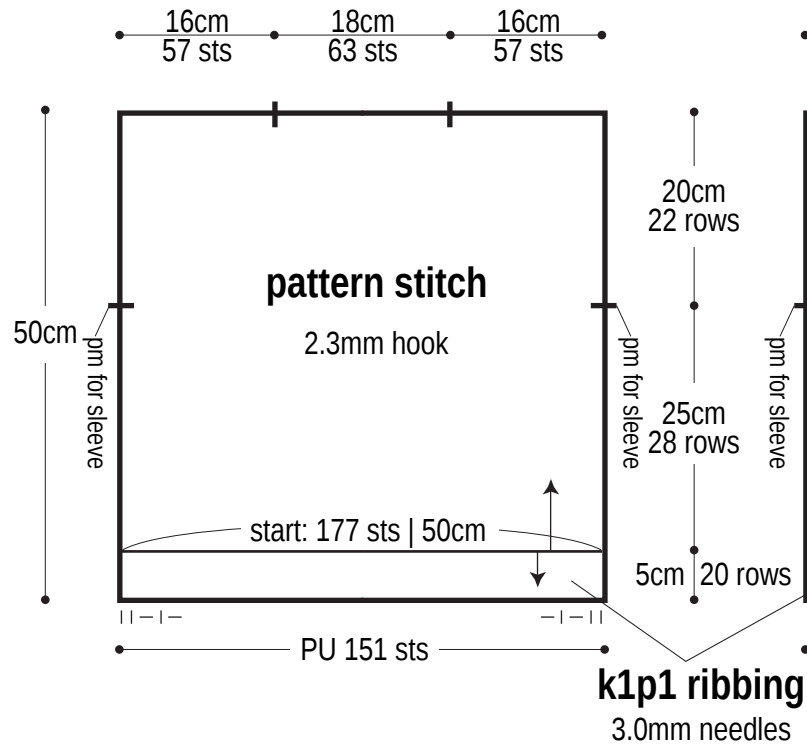
Body & sleeves: With crochet hook, work foundation chain to begin and then work in pattern stitch according to schematics. With knitting needles, pick up stitches from hem and cuff edges, respectively. Work k1p1 ribbing. Bind off in pattern.

Finishing: Seam shoulders with chain seam (alternating chain st and slip st as needed to maintain pattern). Seam sides with chain seam, but seam k1p1 ribbing areas with mattress stitch instead. Seam sleeves in same manner. With knitting needles, pick up stitches from neckline and front edges; work collar/buttonband in k1p1 ribbing. Work buttonholes in right front band only. Bind off in pattern. Seam sleeves to body with ladder stitch.

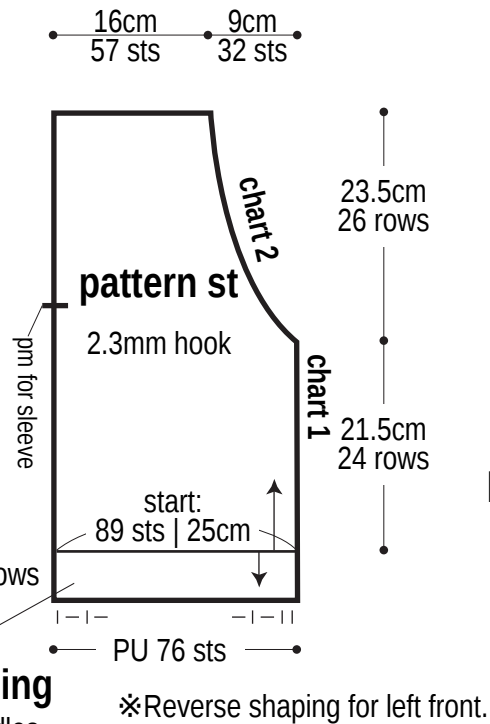
Abbreviations:

blco = backwards loop cast-on increase ch = chain k = knit p = purl pm = place marker PU = pick up

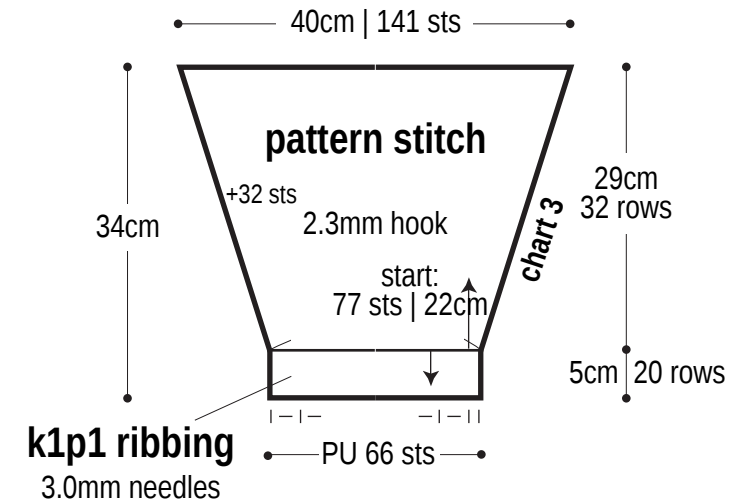
Back



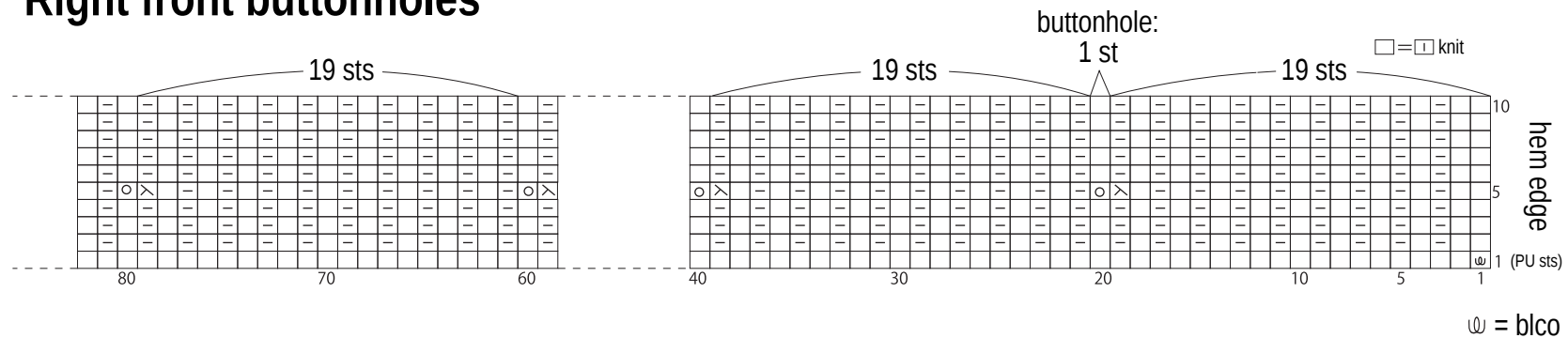
Right front



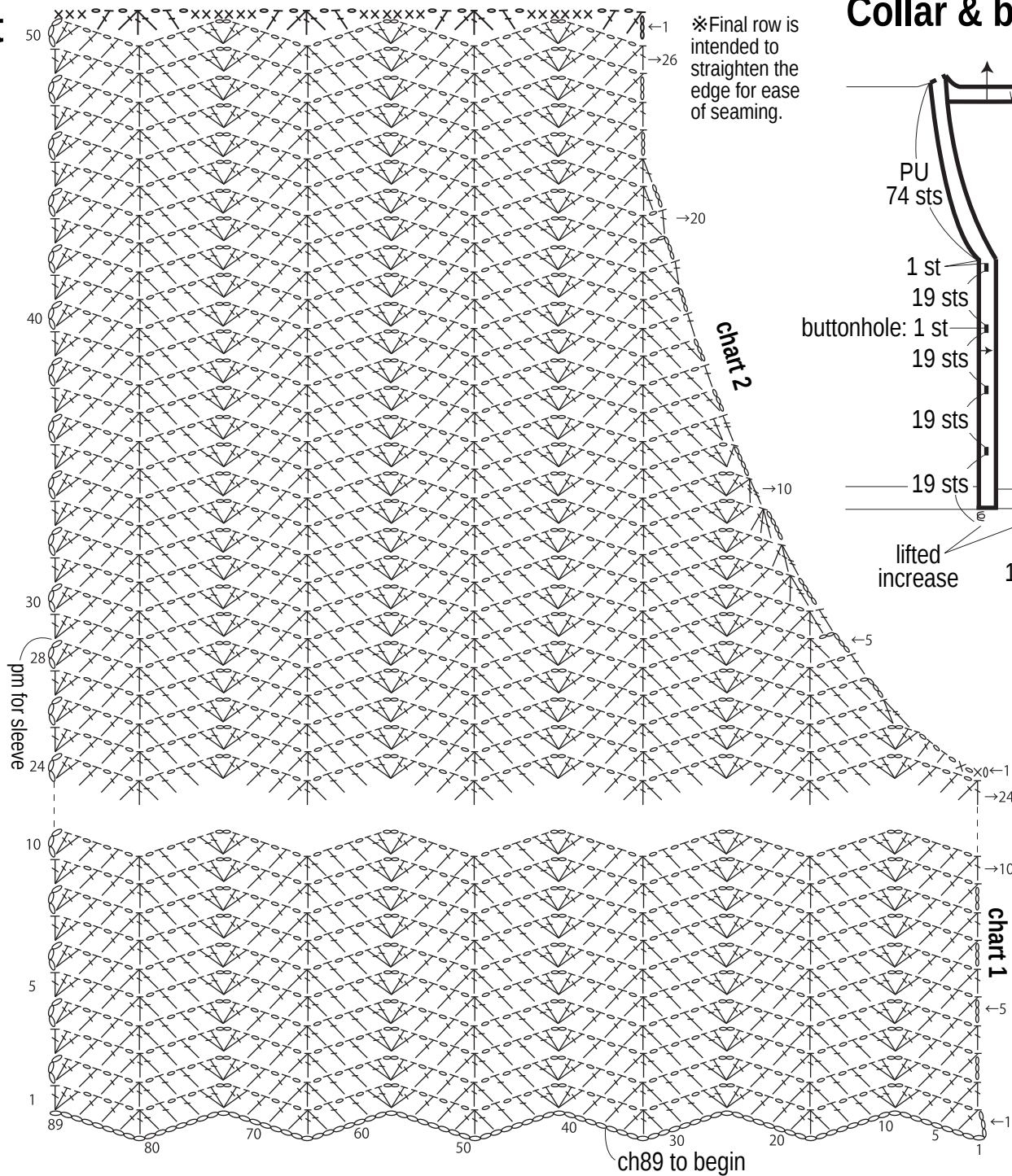
Sleeve



Right front buttonholes

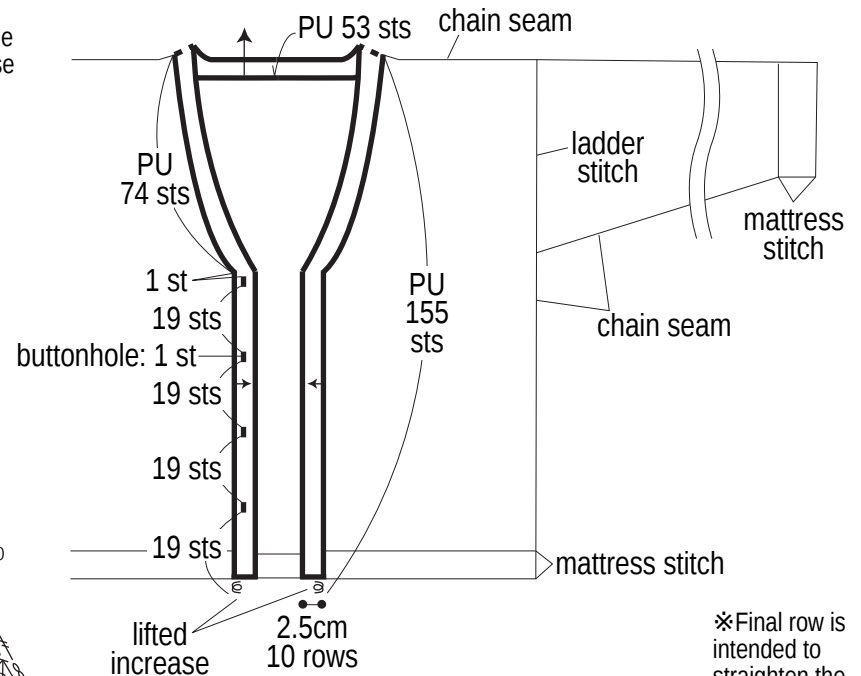


Right front



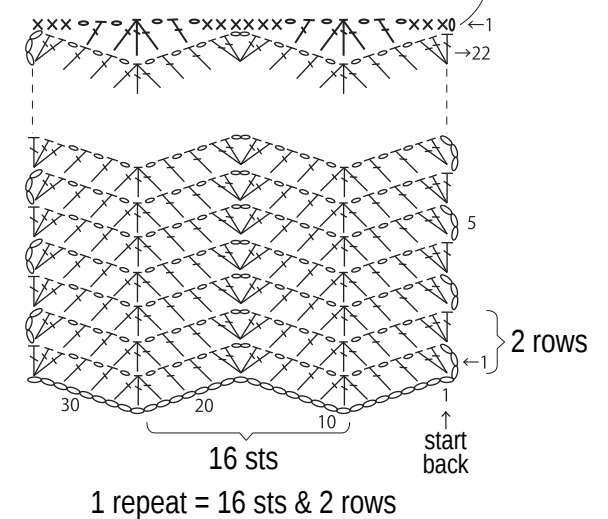
※Final row is intended to straighten the edge for ease of seaming.

Collar & buttonband k1p1 ribbing, 3.0mm DPNs



※Final row is intended to straighten the edge for ease of seaming.

Pattern stitch



Sleeve

