

218ss-15 Necklace



Suggested yarn:

- Pierrot Yarns Ethnic Denim 2 [100% Cotton; 118yds/108m per 1.06oz/30g skein];
 - color #01 Off White, 1 skein [10g]
 - color #07 Emerald Green, 1 skein [10g]
 - color #08 Navy, 1 skein [10g]
 - color #10 Turquoise Blue, 1 skein [10g]

Tools/Notions:

- 2.0mm (US steel hook #4) crochet hook or size necessary to achieve gauge
- 3 wooden beads (10mm/0.39")
- 19 wooden beads (8mm/0.31")
- polyfiber stuffing

Finished measurements:

- necklace circumference 76cm/29.92"

Gauge (10cm/4" square):

- No gauge information is provided in the original pattern. Use hook size necessary to achieve measurements in schematics.

Gauge may vary according to individual crochet style. Change hook size if necessary to achieve gauge. Alternatively, rework pattern with your own gauge measurements.

Summary

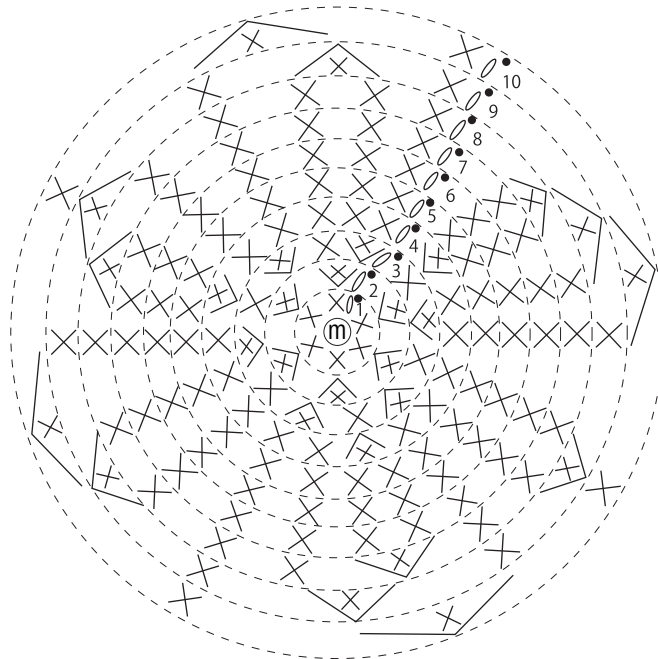
For each crocheted bead, work magic ring and then work sphere shape in the round. Insert stuffing while you work. After working the last round of each bead, cut yarn, leaving a tail approximately 20cm/7.87" long. Using a needle, thread yarn tail through all stitches on last round and cinch bead shut. Weave in yarn tail. Once all the beads have been completed, thread together in order shown in finishing schematic or as desired.

Abbreviations:

m = magic ring/circle sc = single crochet (US)

Bead A 2.5cm diameter

2.0mm hook

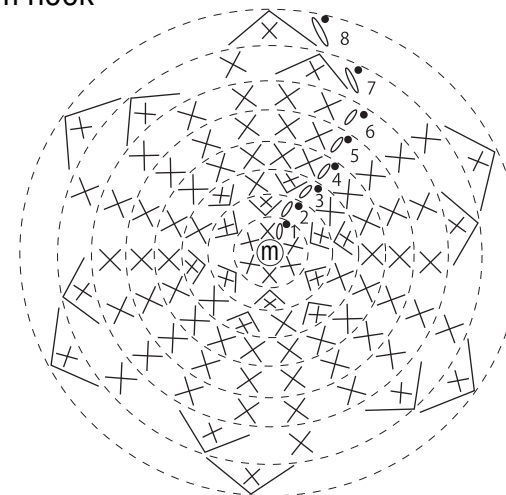


color #01 off-white: make 2
color #07 emerald green: make 1
color #08 navy: make 1
color #10 turquoise blue: make 1

round no.	stitch count
10	8 (-4 sts)
9	12 (-6 sts)
8	18 (-3 sts)
7	21
6	21
5	21
4	21 (+3 sts)
3	18 (+6 sts)
2	12 (+6 sts)
1	6 (work into magic ring)

Bead B 2cm diameter

2.0mm hook

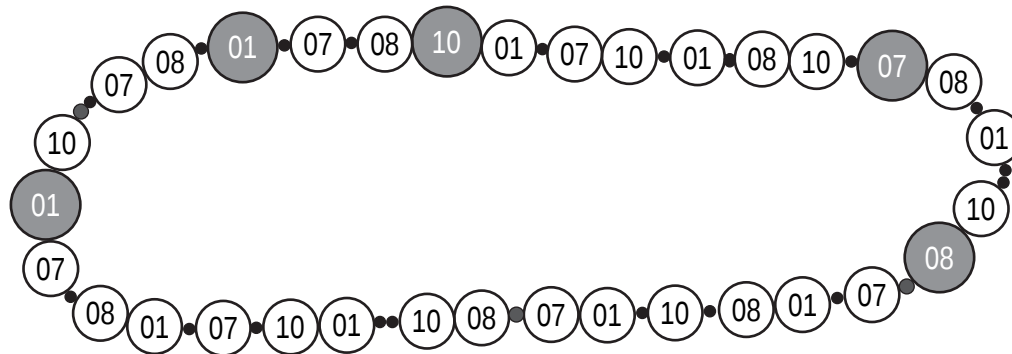
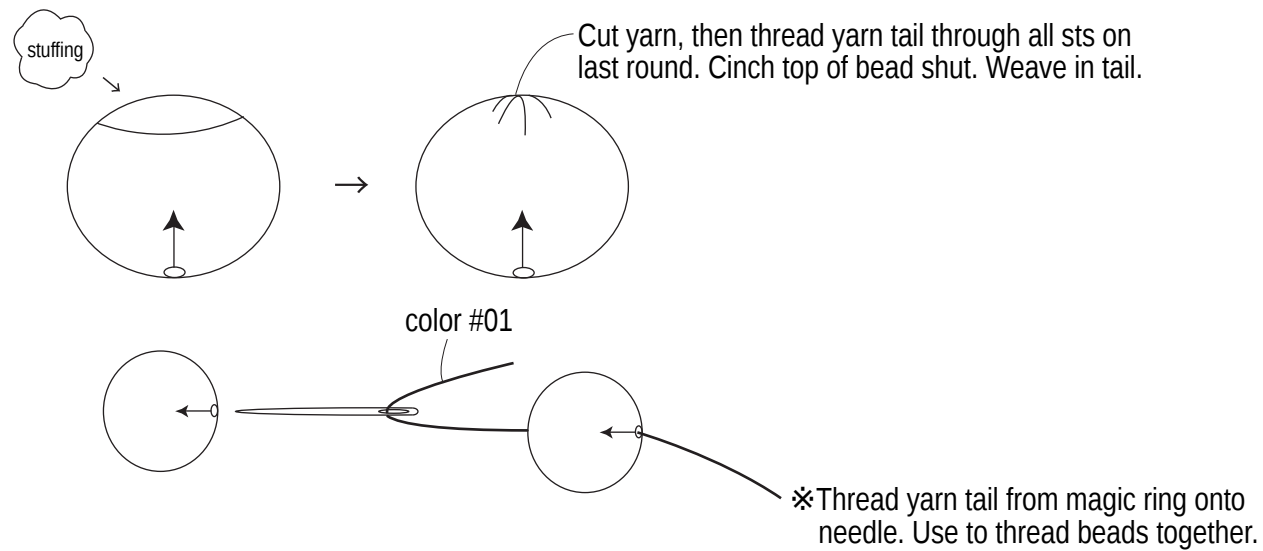


color #01 off-white
color #07 emerald green
color #08 navy
color #10 turquoise blue

make 7 of each

round no.	stitch count
8	6 (-6 sts)
7	12 (-6 sts)
6	18
5	18
4	18
3	18 (+6 sts)
2	12 (+6 sts)
1	6 (work into magic ring)

Finishing



- bead A ●
- bead B ○
- ① = color #01 off-white
- ⑦ = color #07 emerald green
- ⑧ = color #08 navy
- ⑩ = color #10 turquoise blue

wooden beads:

- = 10mm diameter
- = 8mm diameter