

# 1241sw Olivia Tee



## Suggested yarn:

- Pierrot Yarns Olivia [50% cotton, 50% nylon; 80 yds/73m per 1.41 oz./40g skein]; color #07 celeste blue, 11 skeins [410g]

## Tools/Notions:

- 3.3mm (approx. US 3) and 3.9mm (approx. US 6) knitting needles or sizes necessary to achieve gauge

## Finished measurements:

- bust 94cm/37.01"
- cross back width 40cm/15.75"
- back length 33cm/12.99"
- sleeve length 54cm/21.26"

## Gauge (10cm/4" square):

- pattern stitch: 19 sts and 29 rows

*Gauge may vary according to individual knitting style. Change needle size if necessary to achieve gauge. Alternatively, rework pattern with your own gauge measurements.*

## Summary

**Body & sleeves:** Cast on with long-tail cast-on method. Work in pattern stitch. After finishing body/sleeve, pick up stitches from cast-on edge and work welt in k2p2 ribbing. Bind off in pattern.

**Finishing:** Seam shoulders with slip stitch seam. Pick up stitches around neckline; work collar in k2p2 ribbing in the round. Bind off in pattern. Seam sleeves to body with slip stitch seam. Seam underarm gussets (which are marked with ★ in the schematics) with stitches-to-rows mattress stitch. On each side of the body, seam side and sleeve with one continuous mattress stitch seam.

## Abbreviations:

BO = bind off

CO = cast on

k = knit

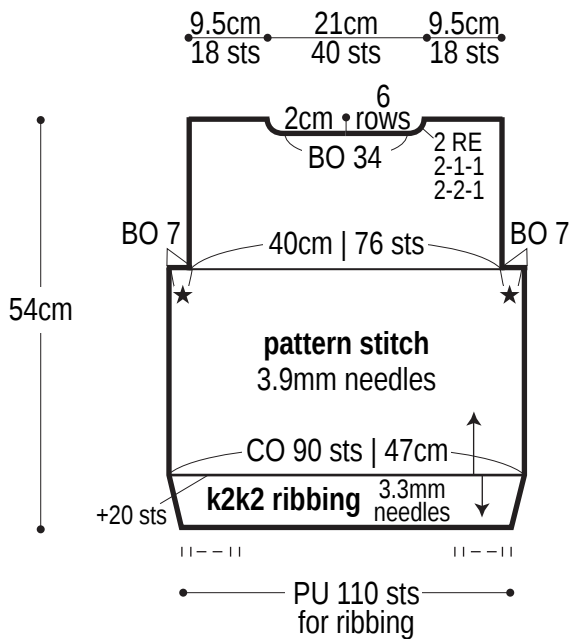
p = purl

PU = pick up

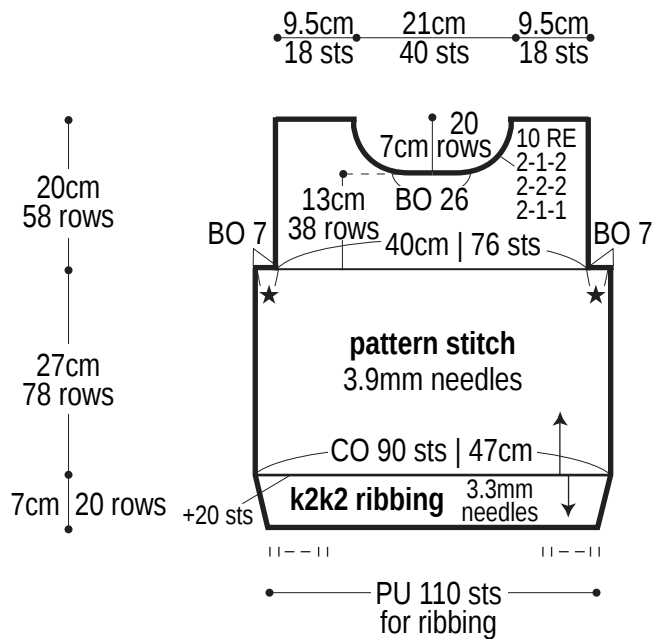
RE = row(s) even

#-#-# = rows-stitches-times

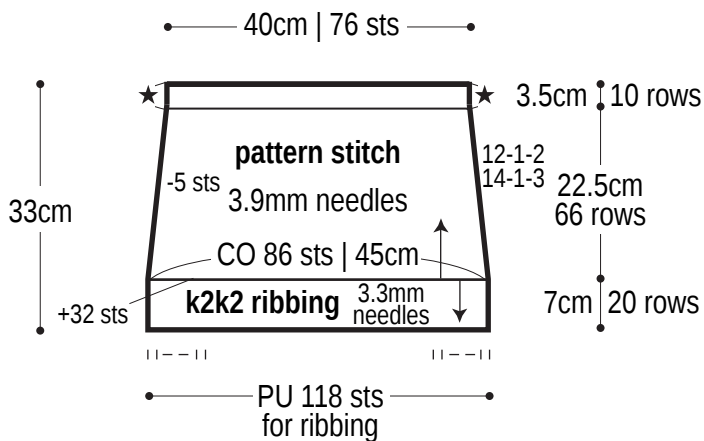
## Back



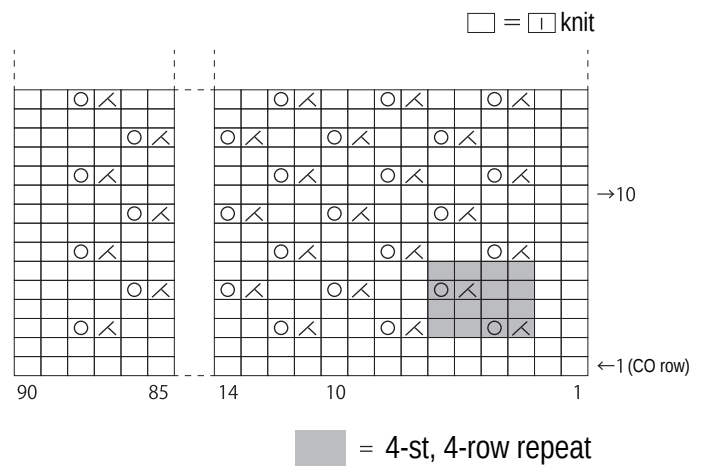
## Front



## Sleeve



## Pattern stitch 3.9mm needles



## Finishing k2p2 ribbing

3.9mm needles

