

1222dss Design Summer Sweater



Suggested yarn:

- Pierrot Yarns La Puree [100% cotton; 197 yds/180m per 1.76 oz./50g skein];
 - color #511 denim, 11 skeins [525g]

Tools/Notions:

- 3.0mm (US 2½) and 3.6mm (approx. US 4 or 5) knitting needles or sizes necessary to achieve gauge

Finished measurements:

- bust 96cm/37.80"
- center back neck-to-cuff 73cm/28.74"
- back length 50cm/19.69"

Gauge (10cm/4" square):

- stockinette stitch: 25 sts and 30 rows
- seed stitch: 23 sts and 36 rows
- pattern stitch: 24.5 sts and 33 rows

Gauge may vary according to individual knitting style. Change needle size if necessary to achieve gauge. Alternatively, rework pattern with your own gauge measurements.

Summary

❖**Note:** Entire garment worked with 2 strands of yarn held together.

Body (make 2): Cast on with long-tail cast-on method. Work in k1p1 ribbing, then work in st st, seed stitch, and pattern stitch according to charts and schematic.

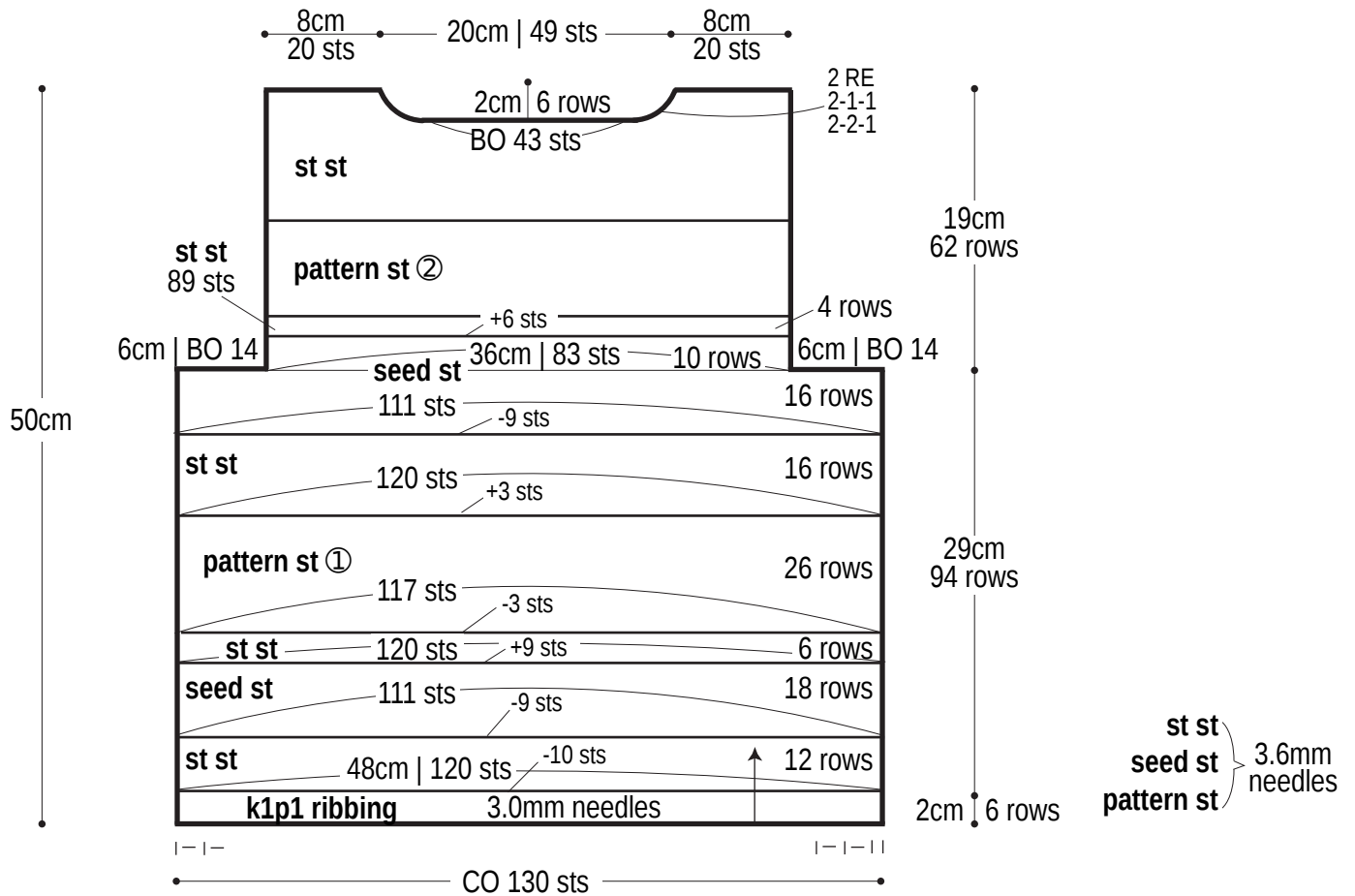
Sleeve (make 2): Pick up stitches from around armhole. Work in st st, seed stitch, pattern stitch, and k1p1 ribbing (see schematic). Bind off in pattern.

Finishing: Seam shoulders with crochet slip stitch seam. Pick up stitches around neckline; work collar in k1p1 ribbing in the round. Bind off in pattern. Seam underarm gusset with stitches-to-rows mattress stitch. On each side of body, seam side/arm seam with one continuous mattress stitch seam.

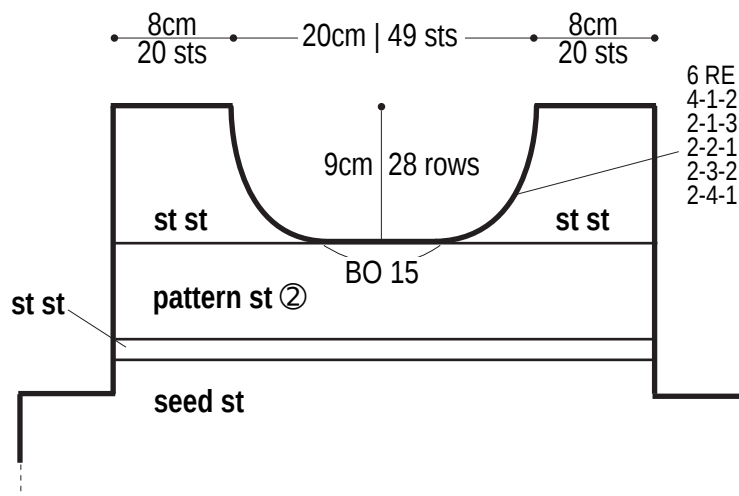
Abbreviations:

BO = bind off
CO = cast on
k = knit
k2tog = knit two stitches together
p = purl
PSSO = pass slipped stitch over
PU = pick up
RE = row(s) even
ssk = slip, slip, knit
st st = stockinette stitch
YO = yarn over
#-#-# = rows-stitches-times

Back



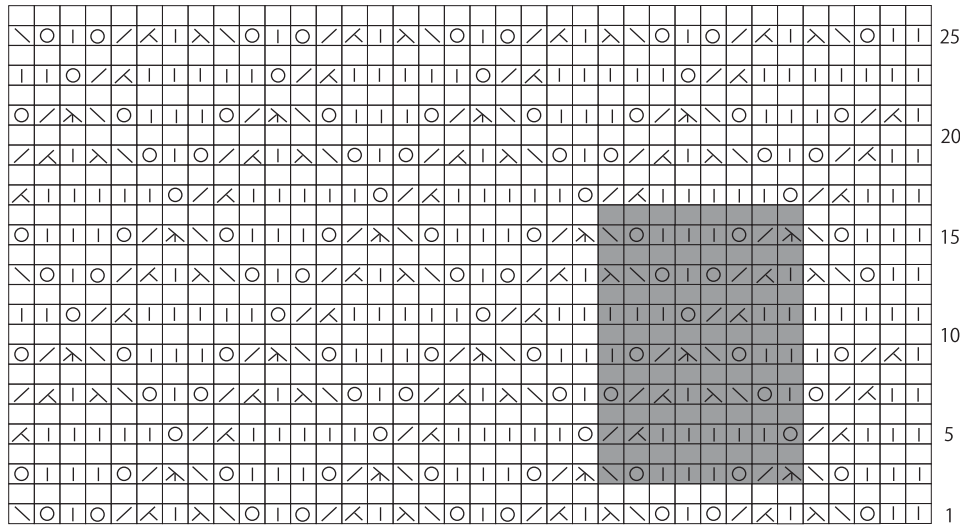
Front



※Work front the same as back up until the section of pattern stitch ② begins.

Pattern stitches

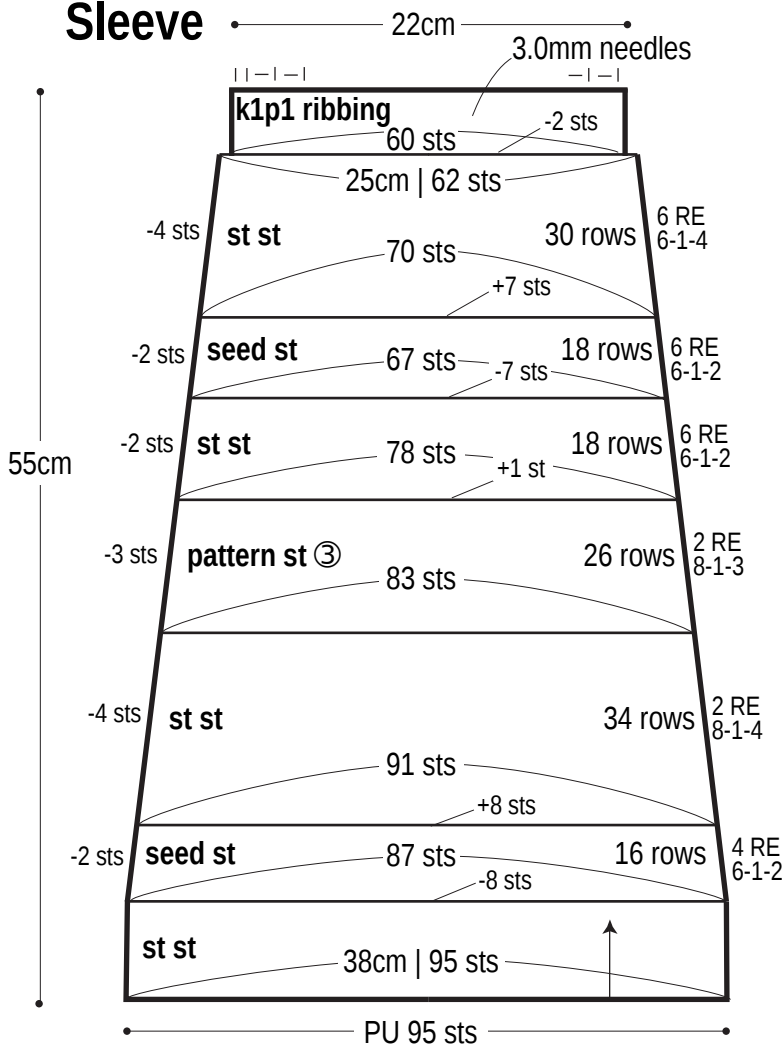
□ = □ knit



- = knit
- ⊗ = ssk
- ⊗ = k2tog
- ⊗ = slip 1, k2tog, PSSO
- ⊗ = YO

■ = 8-st, 14-row repeat

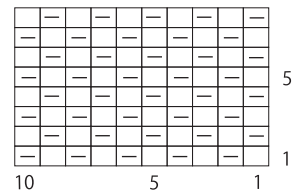
Sleeve



↑ pattern st ①
↑ pattern st ②
↑ pattern st ③
start

Seed stitch

□ = □ knit



st st
seed st
pattern st } 3.6mm needles

Finishing

k1p1 ribbing
3.0mm needles

