

# 1206pull Balloon Sleeve Pullover



## Suggested yarn:

- Pierrot Yarns Star Pochette [50% cotton, 50% merino wool; 131 yds/120m per 1.41 oz./40g skein]; color #102 lovely, 8 skeins [305g]

## Tools/Notions:

- 3.0mm (approx. US 2½) and 3.6mm (approx. US 4 or 5) knitting needles or sizes necessary to achieve gauge

## Finished measurements:

- bust 96cm/37.80"
- center back neck-to-cuff 63cm/24.80"
- back length 50cm/19.69"

## Gauge (10cm/4" square):

- pattern stitch: 23 sts and 32 rows

*Gauge may vary according to individual knitting style. Change needle size if necessary to achieve gauge. Alternatively, rework pattern with your own gauge measurements.*

## Summary

**Back & front:** Cast on with long-tail cast-on method. Work in k2p2 ribbing and then in pattern stitch.

**Sleeve (make 2):** Cast on with long-tail cast-on method. Work in pattern stitch. Bind off. Pick up stitches from cast-on edge and work cuff in k2p2 ribbing. Bind off in pattern.

**Finishing:** Seam shoulders with slip stitch seam. Pick up stitches around neckline; work collar in k2p2 ribbing in the round. Bind off in pattern. Seam sleeves to bdy with slip stitch seam. On each side of the body, seam side and sleeve underside in one continuous mattress stitch seam.

## Abbreviations:

BO = bind off

CO = cast on

k = knit

p = purl

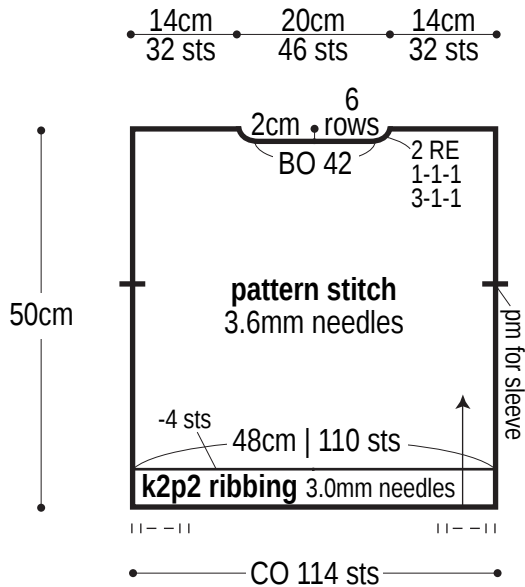
pm = place marker

PU = pick up

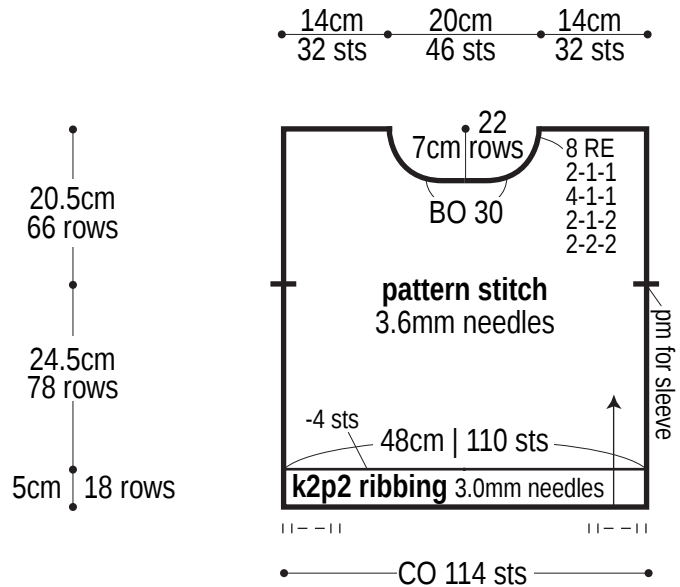
RE = row(s) even

#-#-# = rows-stitches-times

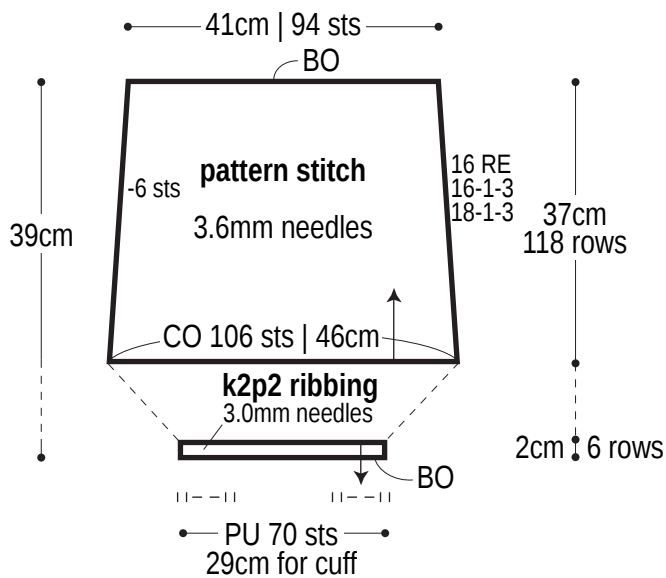
## Back



## Front

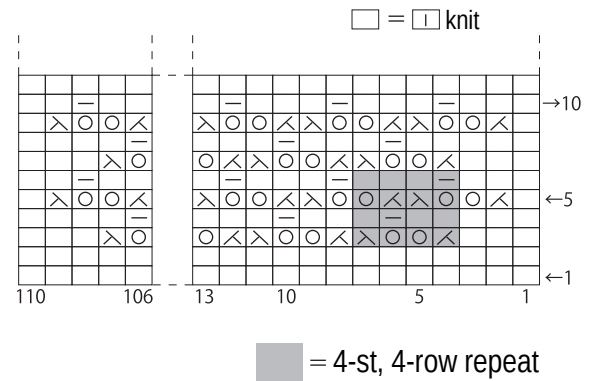


## Sleeve



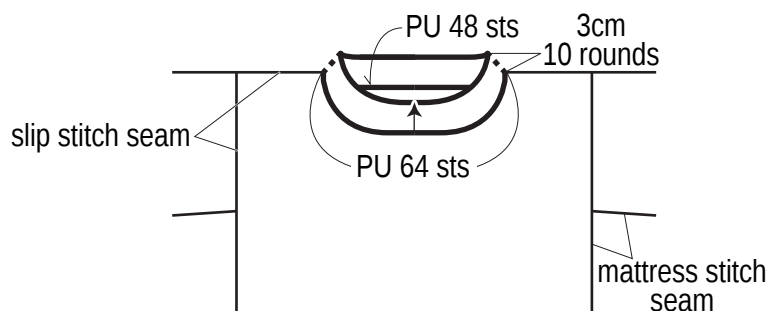
## Pattern stitch

3.6mm needles



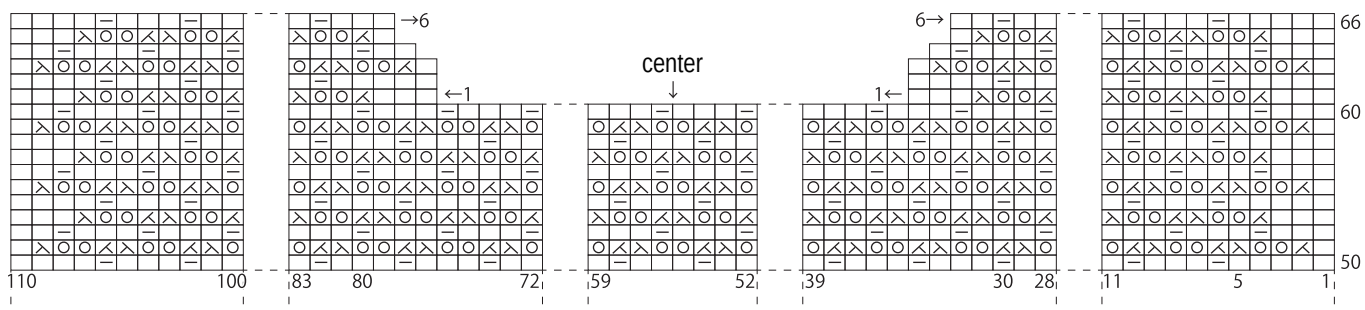
## Finishing

k2p2 ribbing, 3.0mm needles



## Back neckline 3.6mm needles

□ = □ knit



## Front neckline 3.6mm needles

□ = □ knit

