

# 1240stole Prairie Stole



## Suggested yarn:

- Pierrot Yarns Prairie [100% cotton; 104 yds/95m per 0.88 oz./25g skein];
  - color #01 pearl white, 2 skeins [50g]
  - color #03 ivory, 2 skeins [50g]
  - color #05 pale pink, 3 skeins [60g]

## Tools/Notions:

- 2.3mm (approx. US B) crochet hook or size necessary to achieve gauge

## Finished measurements:

- width 20.5cm/8.07"
- length 159cm/62.60"

## Gauge (10cm/4" square):

- pattern stitch: 33.5 sts and 16 rows

*Gauge may vary according to individual crochet style. Change hook size if necessary to achieve gauge. Alternatively, rework pattern with your own gauge measurements.*

## Summary

❖**Note:** Like all Japanese patterns, stitch counts given here for foundation chains do not include any chain sts needed for turning posts.

**Body of stole:** Work foundation chain to begin, then work in pattern stitch.

**Finishing:** Work 1 round of sc edging around all four edges of the stole.

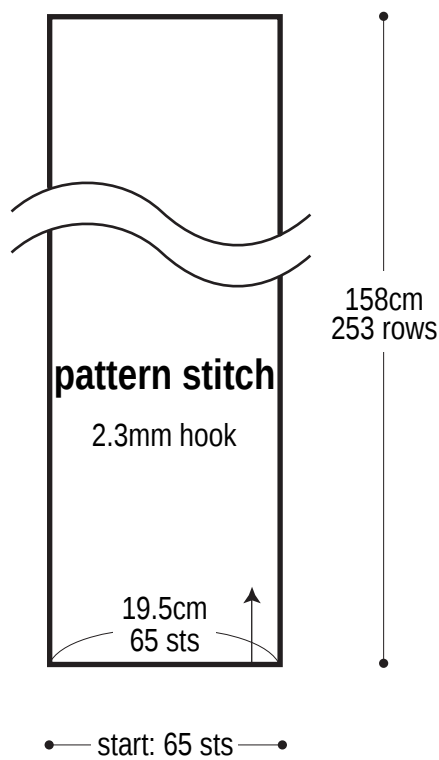
### Abbreviations:

ch = chain

sc = single crochet (US)

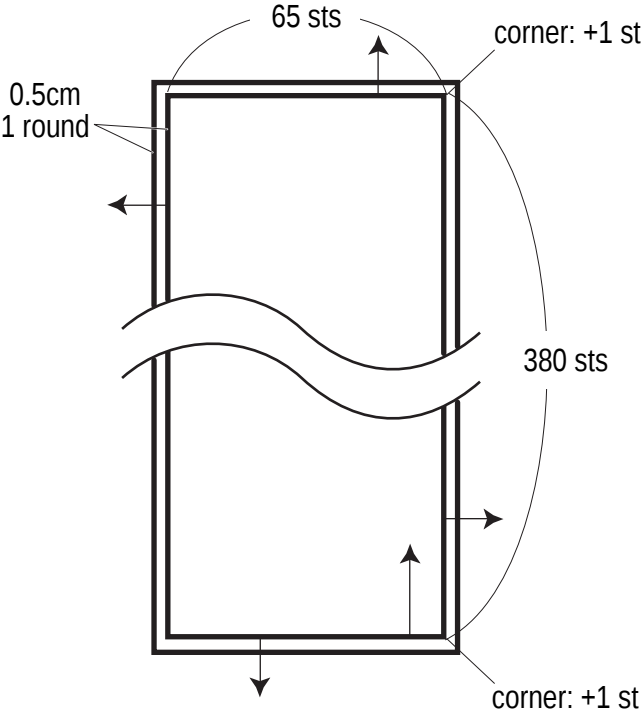
tr = treble crochet (US)

# Stole schematic




## Finishing

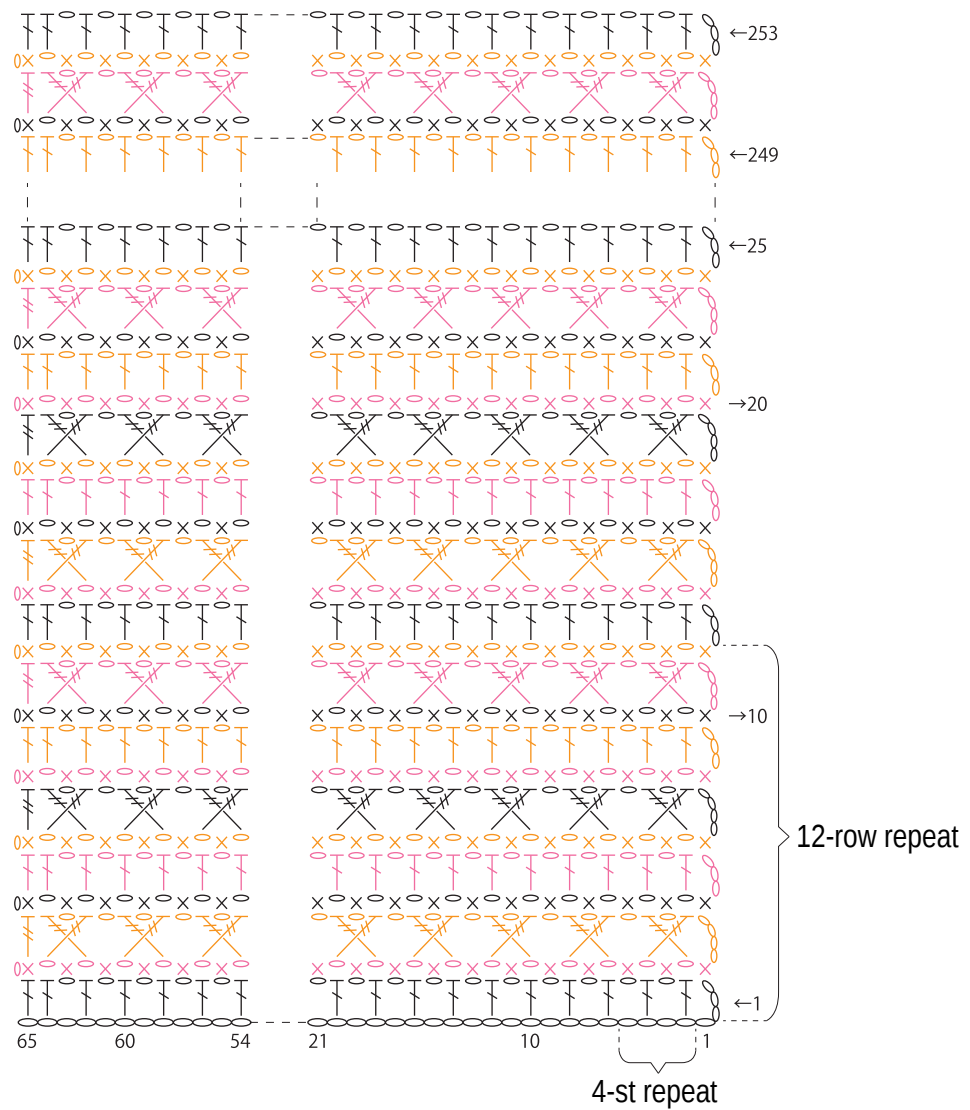
sc, color #05



## Pattern stitch

— = color #01    — = color #03    — = color #05

 = tr cable with ch1 between the 2 tr stitches



## Sc

