

317pull Carta French Sleeve Pullover



Suggested yarn:

- Pierrot Yarns Carta [90% cotton, 10% silk; 133 yds/122m per 1.41 oz./40g skein];
 - color #65 platinum, 5 skeins [200g]

Tools/Notions:

- 3.6mm (approx. US 5) knitting needles or size necessary to achieve gauge
- 2.5mm (approx. US B or C) crochet hook or size necessary to achieve gauge

Finished measurements:

- bust 102cm/40.16"
- center back neck-to-cuff 26cm/10.24"
- back length 54.5cm/21.46"

Gauge (10cm/4" square):

- pattern stitch: 22.5 sts and 35 rows

Gauge may vary according to individual knitting style. Change needle size if necessary to achieve gauge. Alternatively, rework pattern with your own gauge measurements.

Summary

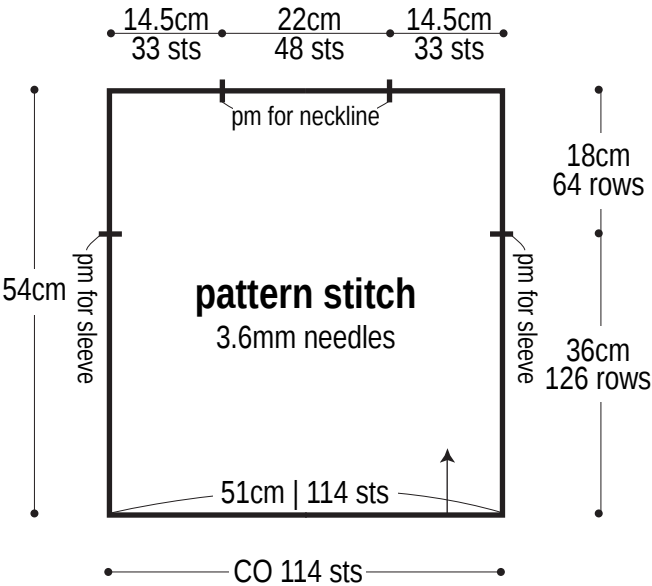
Body: Cast on with long-tail cast-on method. Work in pattern stitch.

Finishing: Seam shoulders with crochet slip stitch seam. Seam sides with mattress stitch. Crochet sc edging around neckline, cuffs, and hem, respectively.

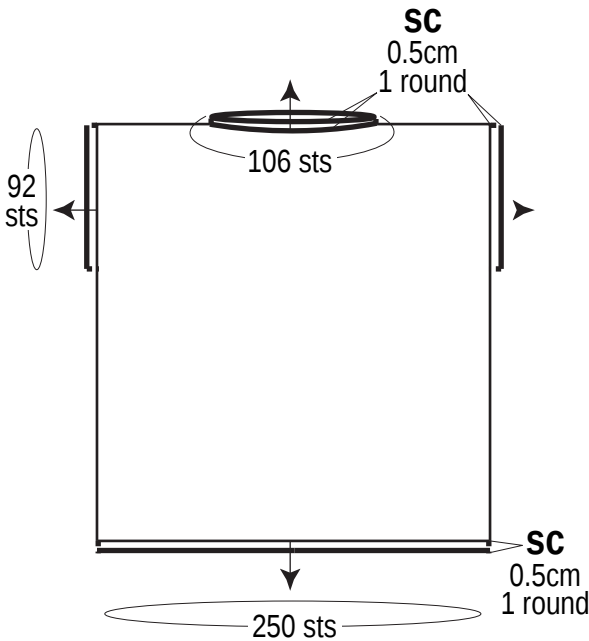
Abbreviations:

BO = bind off
CO = cast on
pm = place marker
sc = single crochet (US)

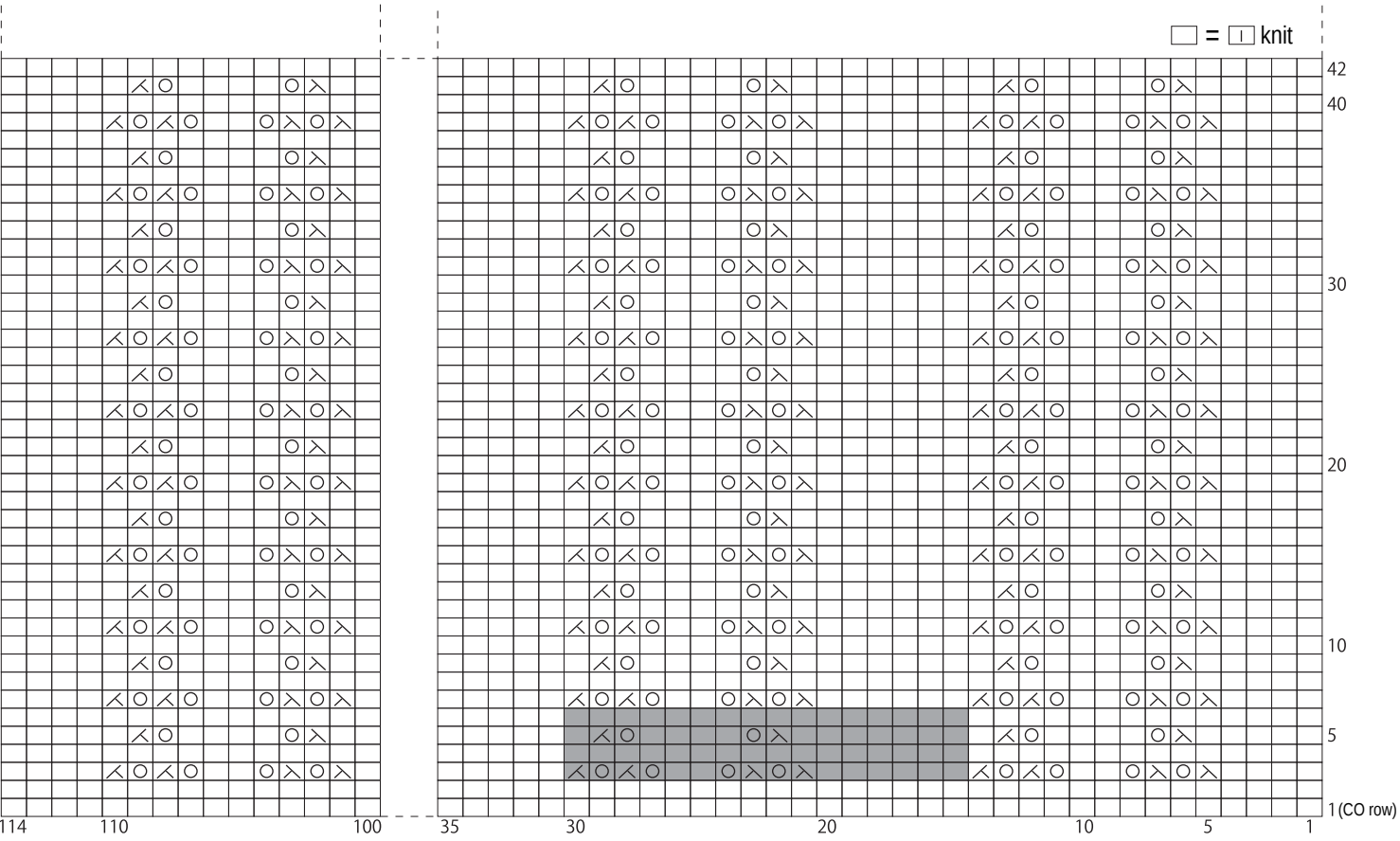
Body (make 2)



Finishing 2.5mm hook



Pattern stitch



16-st, 4-row repeat