

218s-11 Aran Summer Knit Cap



Suggested yarn:

- Pierrot Yarns Cotton Neat S [100% cotton; 104 yds/95m per 1.41 oz./40g skein]; color #10 Powder Blue, 2 skeins [75g]

Tools/Notions:

- 3.3mm (approx. US 4) and 3.9mm (approx. US 6) knitting needles or sizes necessary to achieve gauge
- cable needle

Finished measurements:

- head circumference 51cm/41.73"
- head depth 19cm/24.41"

Gauge (10cm/4" square):

- pattern stitch: 28.5 sts and 29.5 rows

Gauge may vary according to individual knitting style. Change needle size if necessary to achieve gauge. Alternatively, rework pattern with your own gauge measurements.

Summary

Hat: Cast on with long-tail cast-on method. Work in k1p1 ribbing and then pattern stitch. Work decreases in last 10 rows (see chart).

Finishing: Cut yarn tail and thread through all remaining stitches; cinch top of hat shut. Weave in yarn tail. Seam sides of hat with mattress stitch.

Abbreviations:

CO = cast on

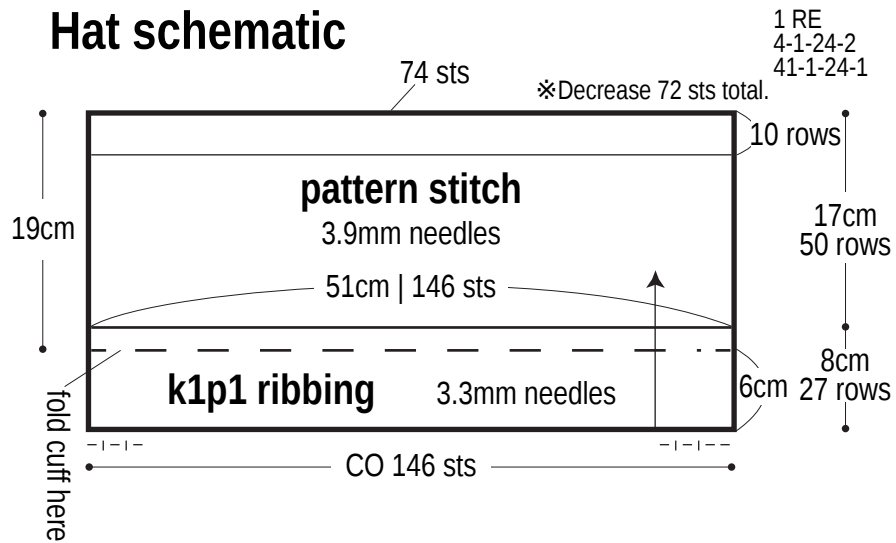
k = knit

p = purl

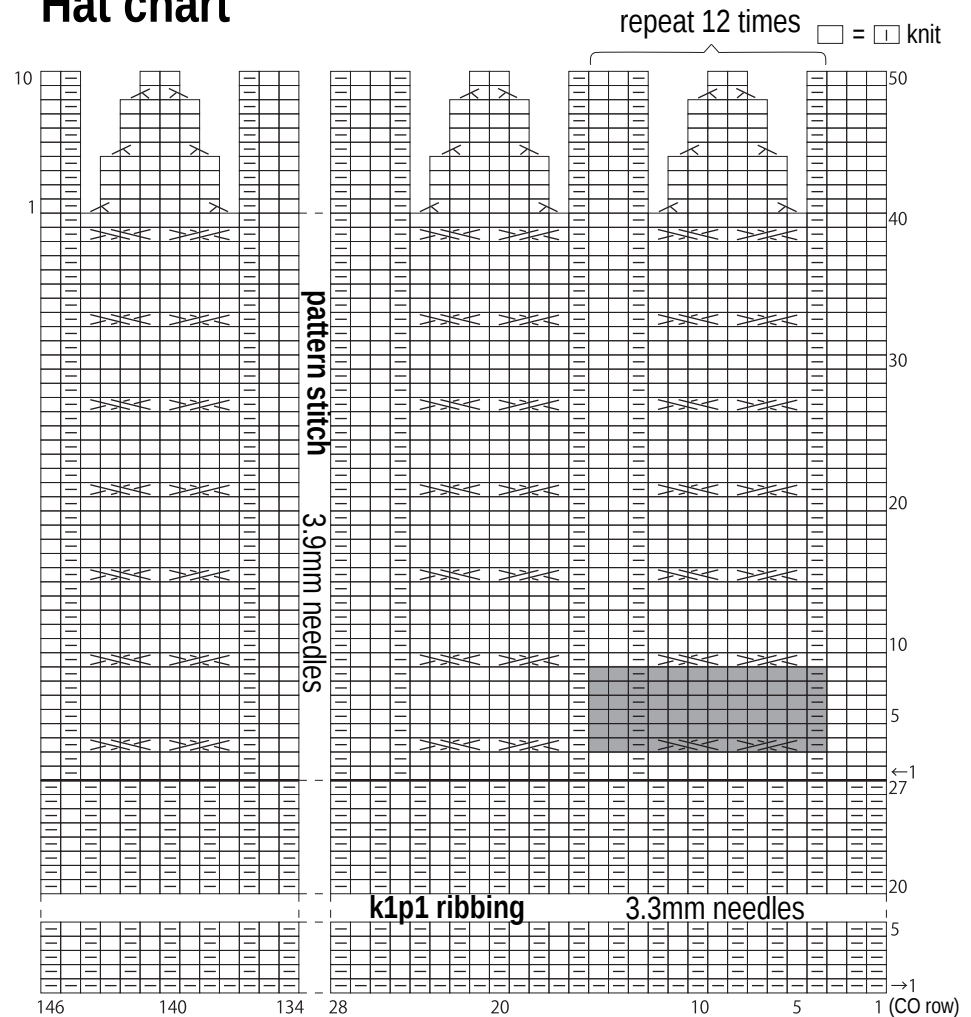
RE = row(s) even

##-##-## = rounds-stitches-places-times [for evenly spaced decreases across entire width of an item]. For example, 1-2-3-4 means "every 1 row, decrease 2 stitches in each of 3 places across the round; do this 4 times total."

Hat schematic



Hat chart



Finishing

