

218s-07 Resort Hat



Suggested yarn:

- Pierrot Yarns Raffia [100% rayon; 124 yds/113m per 1.76 oz./50g skein];
 - color #73 Sand Beige, 2 skeins [95g]
 - color #89 Raven Black, 1 skein [30g]

Tools/Notions:

- 3.5mm (US E) crochet hook or size necessary to achieve gauge

Finished measurements:

- head circumference 57cm/22.44"
- head depth 8cm/3.15"
- hat top radius 8.5cm/3.35"
- brim width 9cm/3.54"
- edging width 0.5cm/0.20"

Gauge (10cm/4" square):

- single crochet (US): 17 sts and 20 rounds
- pattern stitch: 18.5 sts and 21 rounds

Gauge may vary according to individual crochet style. Change hook size if necessary to achieve gauge. Alternatively, rework pattern with your own gauge measurements.

Summary

Top & sides: Work magic ring to begin, then work sc in the round, increasing as indicated in chart. Work sides even (that is, no increasing or decreasing) in sc.

Brim: Continue to brim from sides; work in pattern stitch, increasing as indicated in chart. Work 1 round of edging.

Abbreviations:

ch = chain hdc = half double crochet m = magic ring/circle sc = single crochet (US)

Top increases

round no.	stitch count
17	98 sts (+7)
16	91 sts (work even)
15	91 sts (+7)
14	84 sts (work even)
13	84 sts (+7)
12	77 sts (work even)
11	77
10	70
9	63
8	56
7	49
6	42
5	35
4	28
3	21
2	14
1	7

+7 sts per round

(Work into magic ring.)

Sides

round no.	stitch count
16	98 sts (work even)
1	

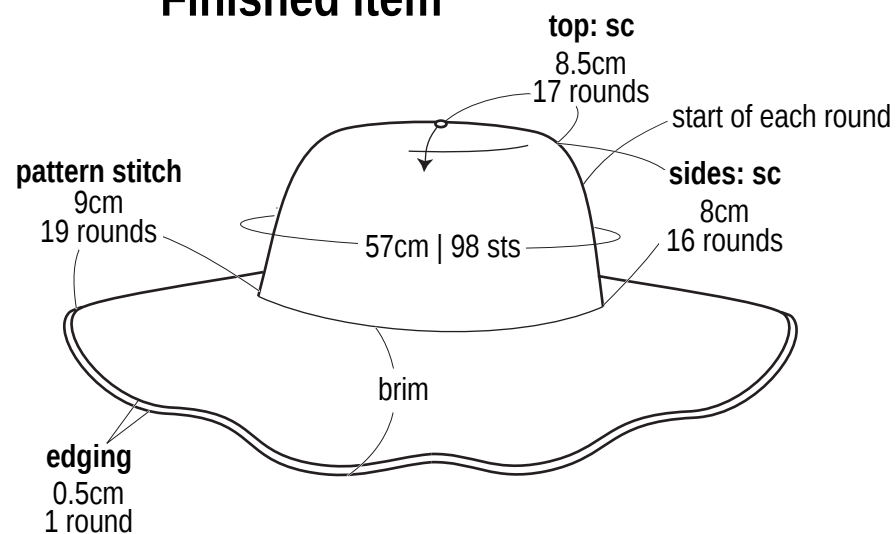
Brim increases

round no.	stitch count
1	200 (edging)
19	200 (work even)
18	200
17	200
16	190
15	190
14	180
13	180
12	170
11	170
10	160
9	160
8	150
7	150
6	140
5	140
4	126
3	126
2	112
1	112

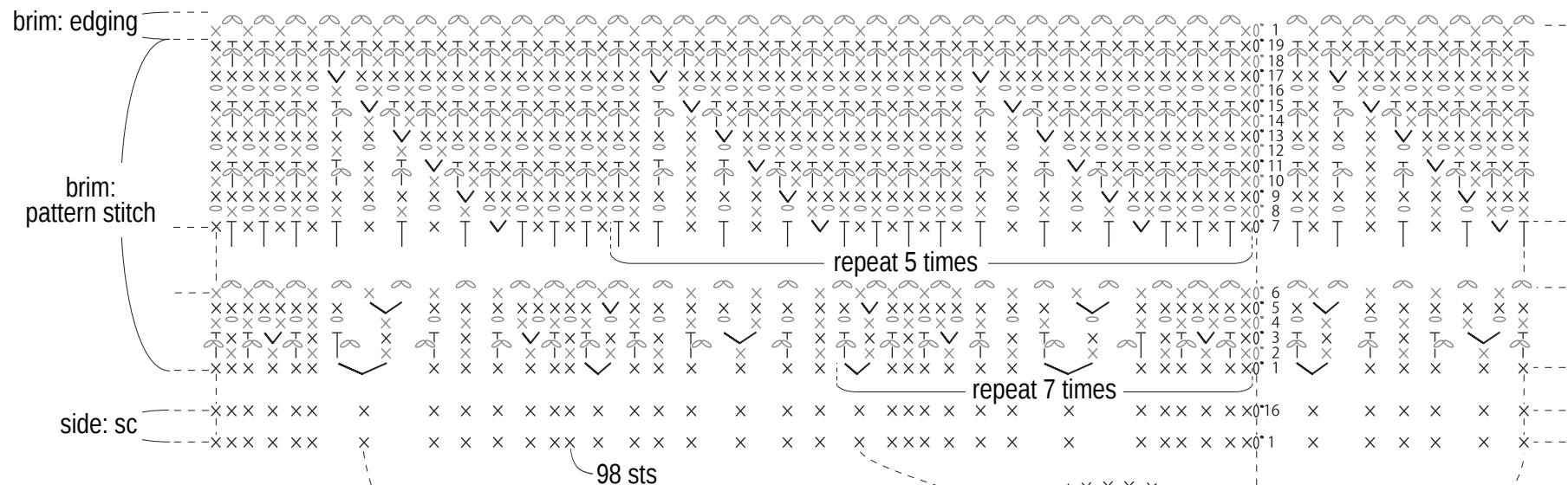
odd-numbered round: work even
even-numbered round: +10 sts

odd-numbered round: work even
even-numbered round: +14 sts

Finished item



Hat chart 3.5mm hook



— = color #73 sand beige

— = color #89 raven black

T = Insert hook through ch-2 space in previous round to work hdc 2 rounds below. Ensure that chain is in front of hdc.

top: sc

