

218s-03 Classic Pullover



Suggested yarn:

- Pierrot Yarns Pastel Organic [100% cotton; 77 yds/70m per 0.88 oz./25g skein]; color #52 Baby Pink, 16 skeins [400g]

Tools/Notions:

- 3.0mm (approx. US C or D) crochet hook or size necessary to achieve gauge

Finished measurements:

- bust 96cm/37.80"
- center back neck-to-cuff 42.5cm/16.73"
- back length 52cm/20.47"

Gauge (10cm/4" square):

- pattern stitch: 26.5 sts and 7.5 rows

Gauge may vary according to individual crochet style. Change hook size if necessary to achieve gauge. Alternatively, rework pattern with your own gauge measurements.

Summary

✳️**Note:** Like all Japanese patterns, stitch counts given here for foundation chains do not include any chain sts needed for turning posts.

Body (make 2): Work foundation chain to begin. Work in pattern stitch. Work sleeves as continuation of body - refer to chart & schematic for details.

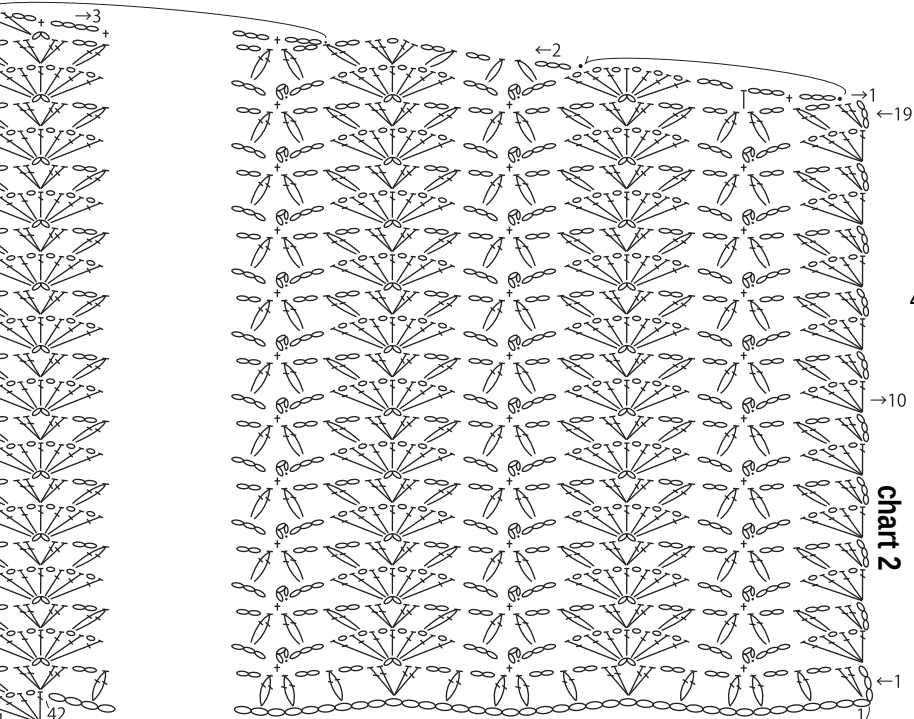
Finishing: Seam shoulders, sleeves, and sides with chain seam (alternating chain st and slip st as needed to maintain pattern). Work edging in the round around hem, cuffs, and neckline, respectively.

Abbreviations:

ch = chain

sc = single crochet (US)

Front & back

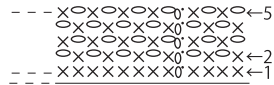


ch42 to continue
to sleeve

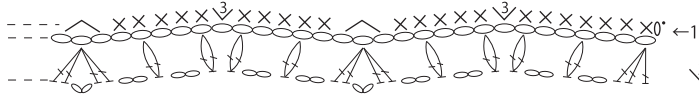
Edging 3.0mm hook

edging A: hem & cuffs

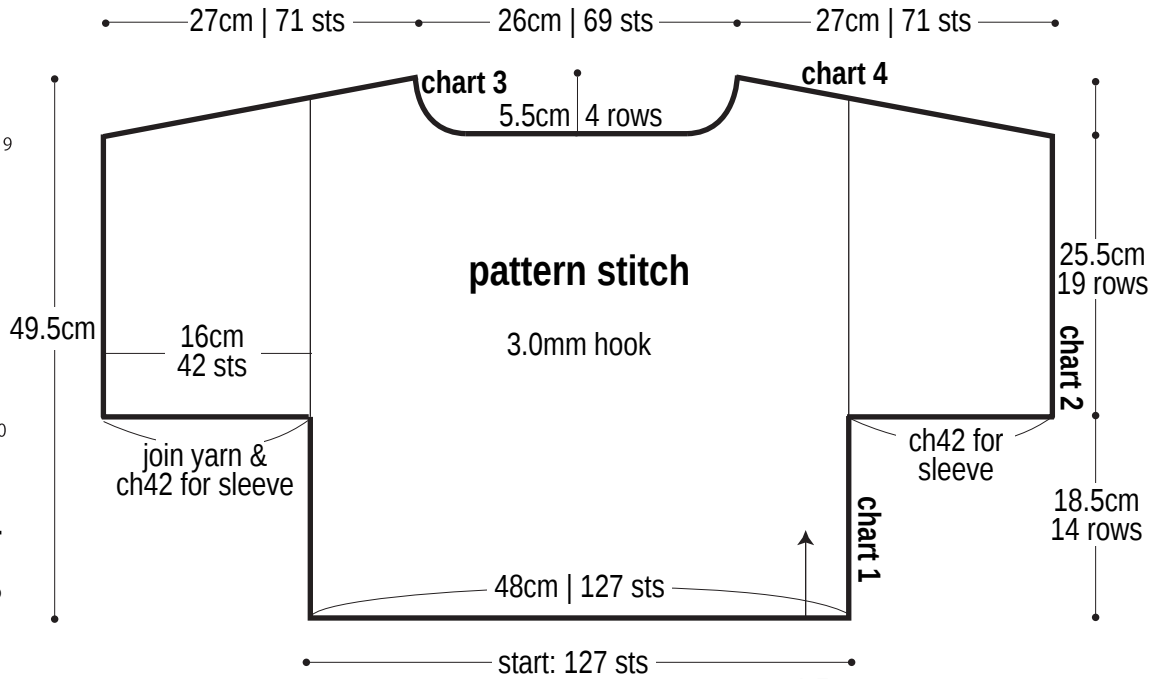
edging B: collar



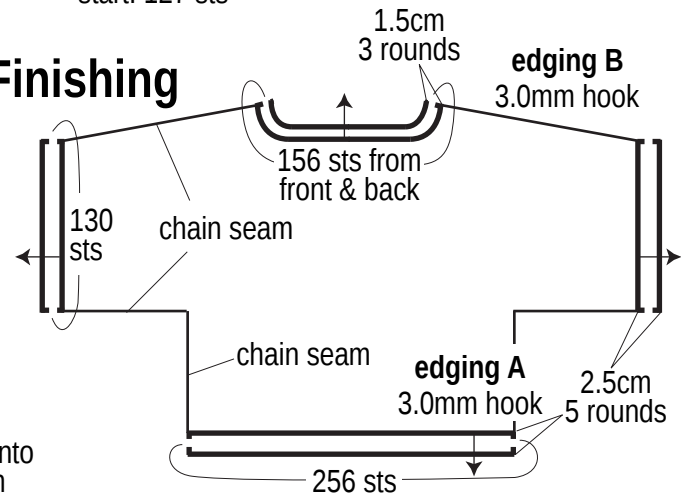
How to work first round of edging around hem



✓³ = work 3 sc into same stitch



Finishing



Front & back 3.0mm hook

