

218ss-16 Reversible Rug



Suggested yarn:

- Pierrot Yarns Basic Cotton or Basic Cotton Colors [100% cotton; 60 yds/55m per 1.06 oz./30g skein];
 - version A:
 - color #1 Milk White, 2 skeins [55g]
 - color #10 Sky Gray, 2 skeins [40g]
 - color #13 Sakura Lover, 3 skeins [70g]
 - version B:
 - color #1 Milk White, 5 skeins [150g]
 - color #18 Gray Beige, 3 skeins [80g]
 - color #19 Olive Leaf, 4 skeins [110g]

Tools/Notions:

- 4.2mm (approx. US 6) Tunisian knitting needle or size necessary to achieve gauge
- 2.5mm (approx. US B or C) crochet hook or size necessary to achieve gauge

Finished measurements:

- | | |
|----------------------|----------------------|
| • version A: | • version B: |
| • length 58cm/22.83" | • length 97cm/38.19" |
| • width 41cm/16.14" | • width 50cm/19.69" |

Gauge (10cm/4" square):

- Tunisian simple stitch: 17 sts and 14 rows

Gauge may vary according to individual crochet style. Change hook size if necessary to achieve gauge. Alternatively, rework pattern with your own gauge measurements.

Summary

※**Note:** Like all Japanese patterns, stitch counts given here for foundation chains do not include any chain sts needed for turning posts.

Body of rug: Work foundation chain to begin, then work rug in striped Tss, which is a reversible pattern. Pay close attention to direction of work in the pattern stitch chart. Bind off when finished.

Finishing: Work sc edging in the round.

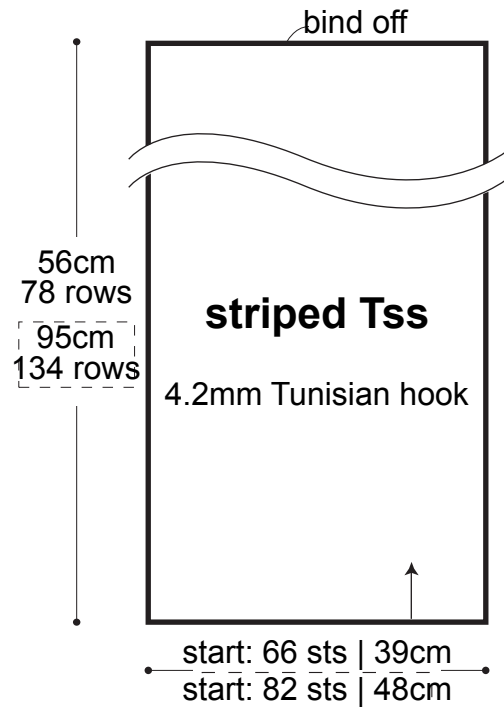
Abbreviations:

ch = chain sc = single crochet (US) Tss = Tunisian simple stitch

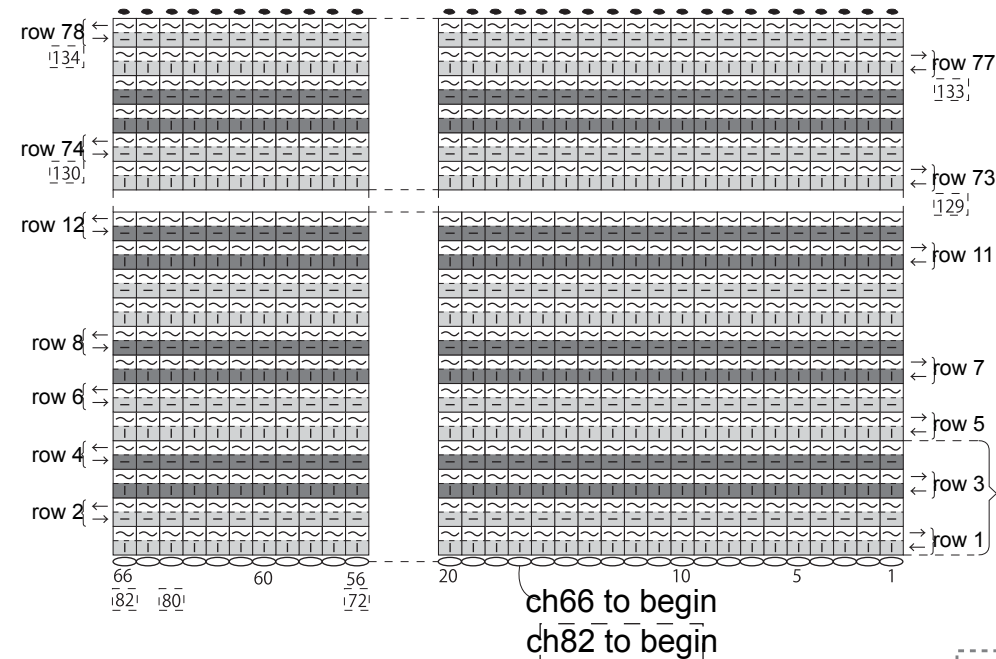
--- = version B

※Where only one set of instructions is provided, it refers to both versions.

Schematic



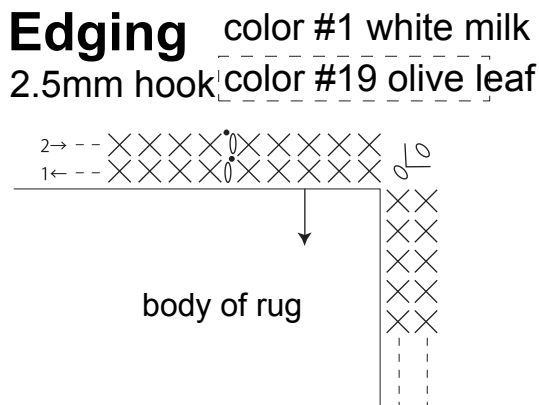
Pattern stitch



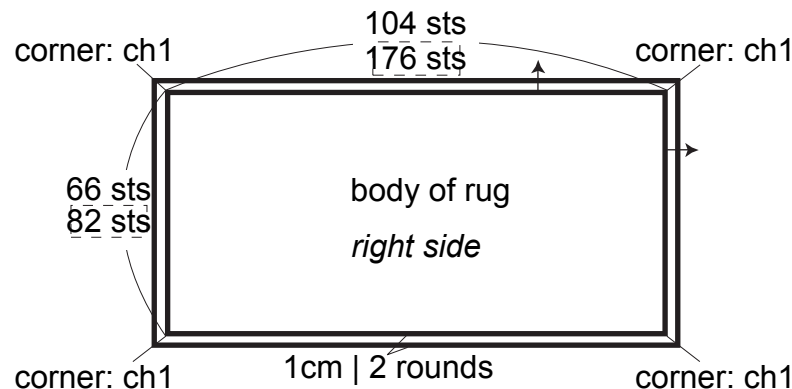
- = color #10 sky gray
- = color #13 sakura lover
- = color #1 white milk
- = color #18 gray beige
- = color #1 white milk
- = color #19 olive leaf

4-row repeat

Edging



Finishing



Use QR code on smartphone to view a video tutorial about how to worked striped Tss.



※To view on computer, search on the Pierrot Yarns website or YouTube channel instead.

SEARCH