

218ss-13 Carta Summer Blanket



Suggested yarn:

- Pierrot Yarns Carta [90% cotton, 10% silk; 133 yds/122m per 1.41 oz./40g skein];
 - color #65 Platinum, 4 skeins [140g]
 - color #66 Citrus Yellow, 3 skeins [115g]
 - color #67 Sky Blue, 3 skeins [115g]
 - color #68 Navy, 2 skeins [60g]

Tools/Notions:

- 2.5mm (approx. US B or C) crochet hook or size necessary to achieve gauge

Finished measurements:

- length 95cm/37.40"
- width 72.5cm/28.54"

Gauge (10cm/4" square):

- pattern stitch: 32 sts and 9 rows

Gauge may vary according to individual crochet style. Change hook size if necessary to achieve gauge. Alternatively, rework pattern with your own gauge measurements.

Summary

❖**Note:** Like all Japanese patterns, stitch counts given here for foundation chains do not include any chain sts needed for turning posts.

Body of blanket: Work foundation chain to begin, then work in pattern stitch. Refer to chart for color key.

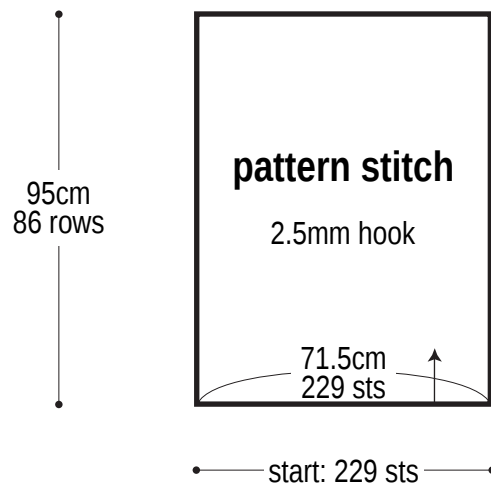
Finishing: Work 1 round of sc edging around perimeter of blanket.

Abbreviations:

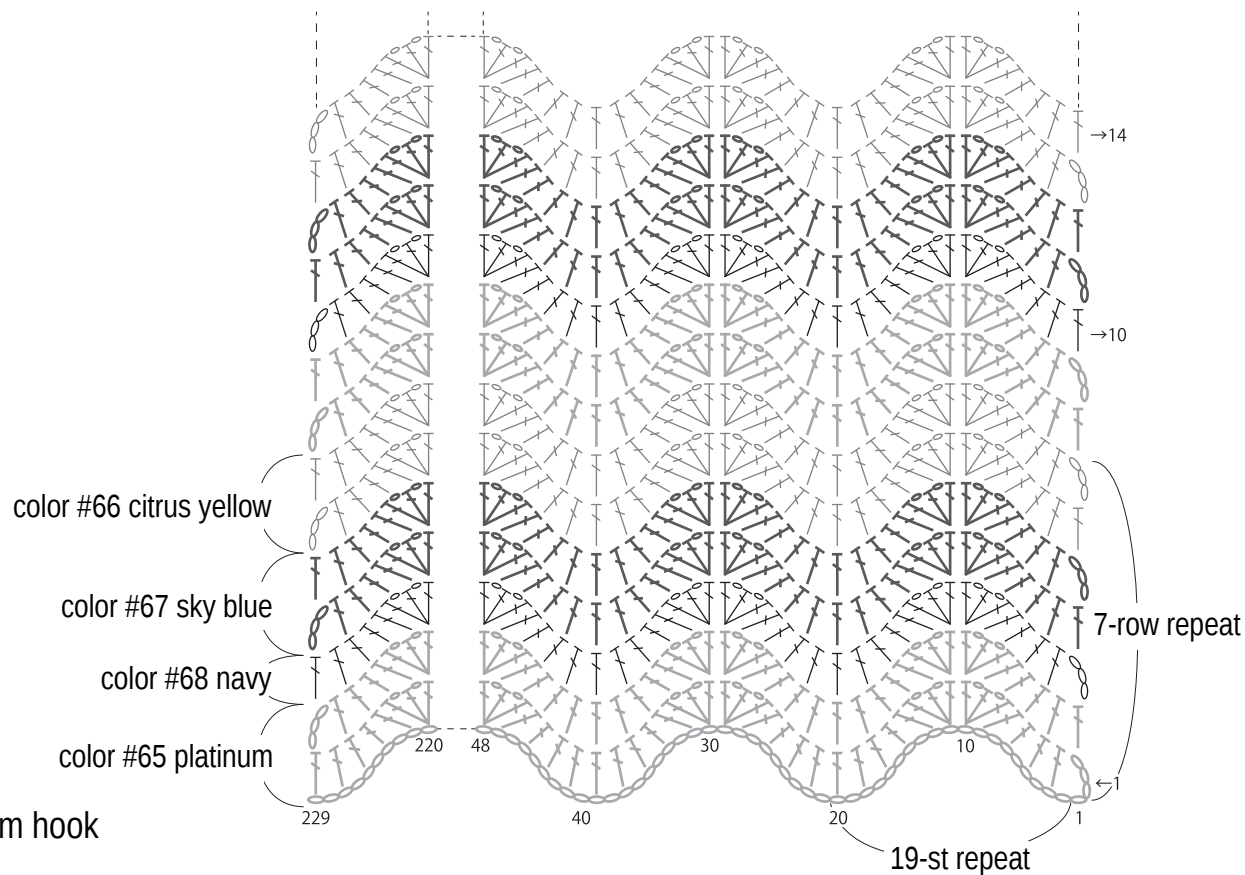
ch = chain

sc = single crochet (US)

Blanket schematic

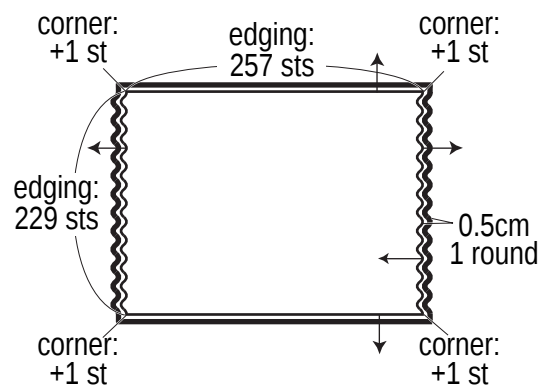
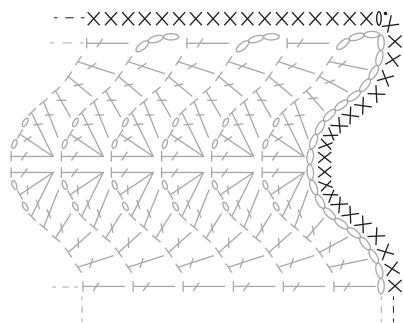


Pattern stitch 2.5mm hook



Finishing: sc edging 2.5mm hook

color #65 platinum



— = color #65 platinum — = color #67 sky blue
— = color #66 citrus yellow — = color #68 navy