

# 218s-06 Relie Drop-stitch Tee



## Suggested yarn:

- Pierrot Yarns Cotton Neat S Relie [100% cotton; 104 yds/95m per 1.41 oz./40g skein]; color #85 Mer Navy, 6 skeins [210g]

## Tools/Notions:

- 3.9mm (approx. US 6) knitting needles or size necessary to achieve gauge

## Finished measurements:

- bust 120cm/47.24"
- center back neck-to-cuff 30cm/11.81"
- back length 48.5cm/19.09"

## Gauge (10cm/4" square):

- pattern stitch: 17 sts and 20 rows

*Gauge may vary according to individual knitting style. Change needle size if necessary to achieve gauge. Alternatively, rework pattern with your own gauge measurements.*

## Summary

**Body (make 2):** Cast on with long-tail cast-on method. Work in garter stitch and pattern stitch.

**Finishing:** Seam shoulders with crochet slip stitch seam. Seam sides with mattress stitch.

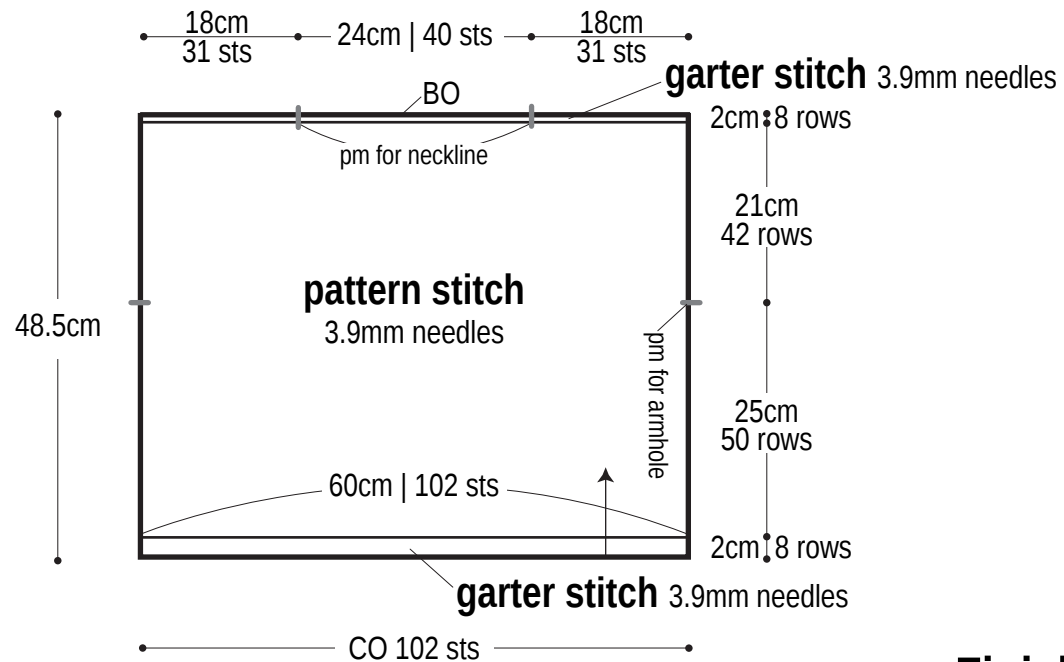
## Abbreviations:

BO = bind off

CO = cast on

pm = place marker

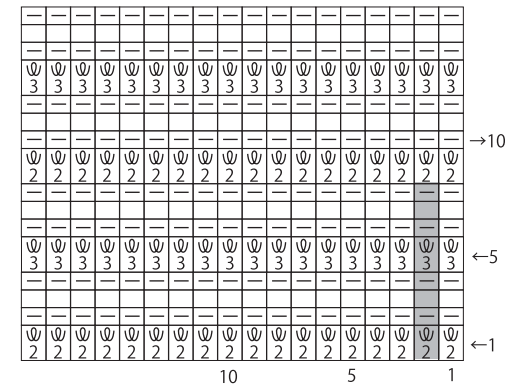
## Back & front (make 2)



## Pattern stitch

3.9mm needles

□ = □ knit



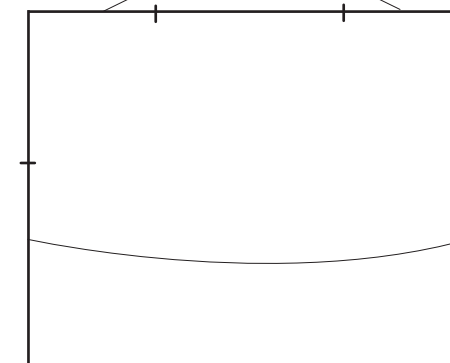
⌞<sub>2</sub> = 2-wrap drop stitch

⌞<sub>3</sub> = 3-wrap drop stitch

■ = 8-row repeat

## Finishing

Seam shoulders with  
crochet slip stitch seam.



Seam with mattress  
stitch, taking care not to  
pull seam too tightly.

Use QR code on smartphone  
to view a video tutorial about  
how to work drop stitch.



✳️ To view on computer, search on the Pierrot  
Yarns website or YouTube channel instead.

SEARCH