

# 218s-05 Square Crochet Top



## Suggested yarn:

- Pierrot Yarns New Shine Cotton [100% Cotton; 148 yds/135m per 1.06 oz./30g skein]; color #01 White, 7 skeins [185g]

## Tools/Notions:

- 2.0mm (US steel hook #4) crochet hook or size necessary to achieve gauge

## Finished measurements:

- bust 96cm/37.80"
- center back neck-to-cuff 24.5cm/9.65"
- back length 52.5cm/20.67"

## Gauge (10cm/4" square):

- pattern stitch A: 37 sts and 15 rows
- pattern stitch C: 40 sts and 13 rows

*Gauge may vary according to individual crochet style. Change hook size if necessary to achieve gauge. Alternatively, rework pattern with your own gauge measurements.*

## Summary

✳️**Note:** Like all Japanese patterns, stitch counts given here for foundation chains do not include any chain sts needed for turning posts.

**Body (make 2):** For each section marked pattern stitch A, B, and C, work foundation chain and work in the particular pattern stitch indicated. For pattern stitch A, entire chart is not provided due to space limitations; work the left side as mirror images of the right side. Work pattern stitches B' and C' as mirror images of pattern stitches B and C. Seam all the parts together with ladder stitch. Seam shoulders with chain seam (alternating chain st and slip st as needed to maintain pattern).

**Finishing:** Seam sides with chain seam (alternating chain st and slip st as needed to maintain pattern). Work sc edging in the round around neckline, armholes, and hem.

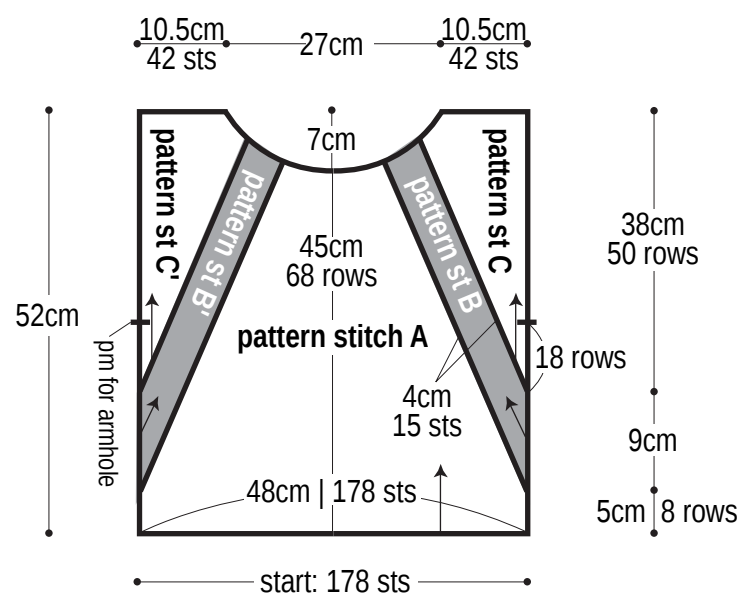
### Abbreviations:

ch = chain

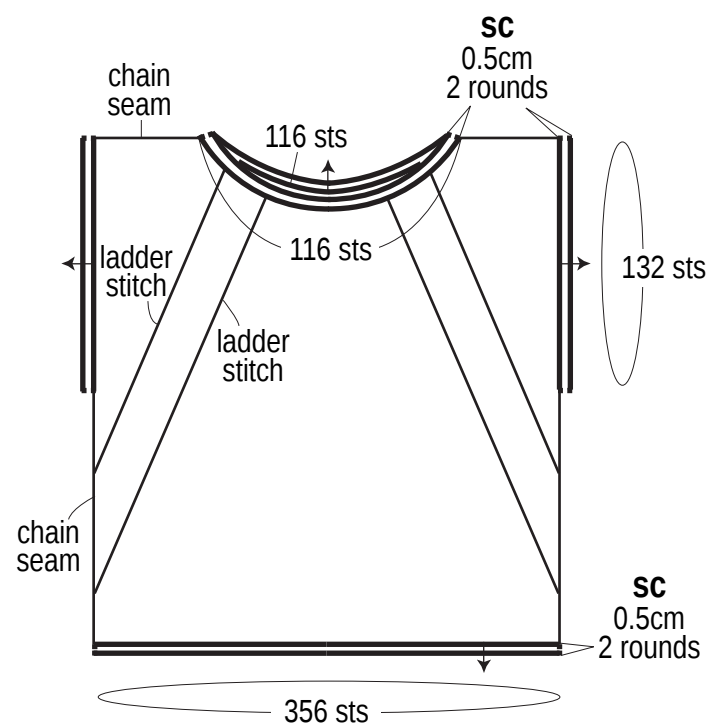
pm = place marker

sc = single crochet (US)

## Body (make 2) 2.0mm hook

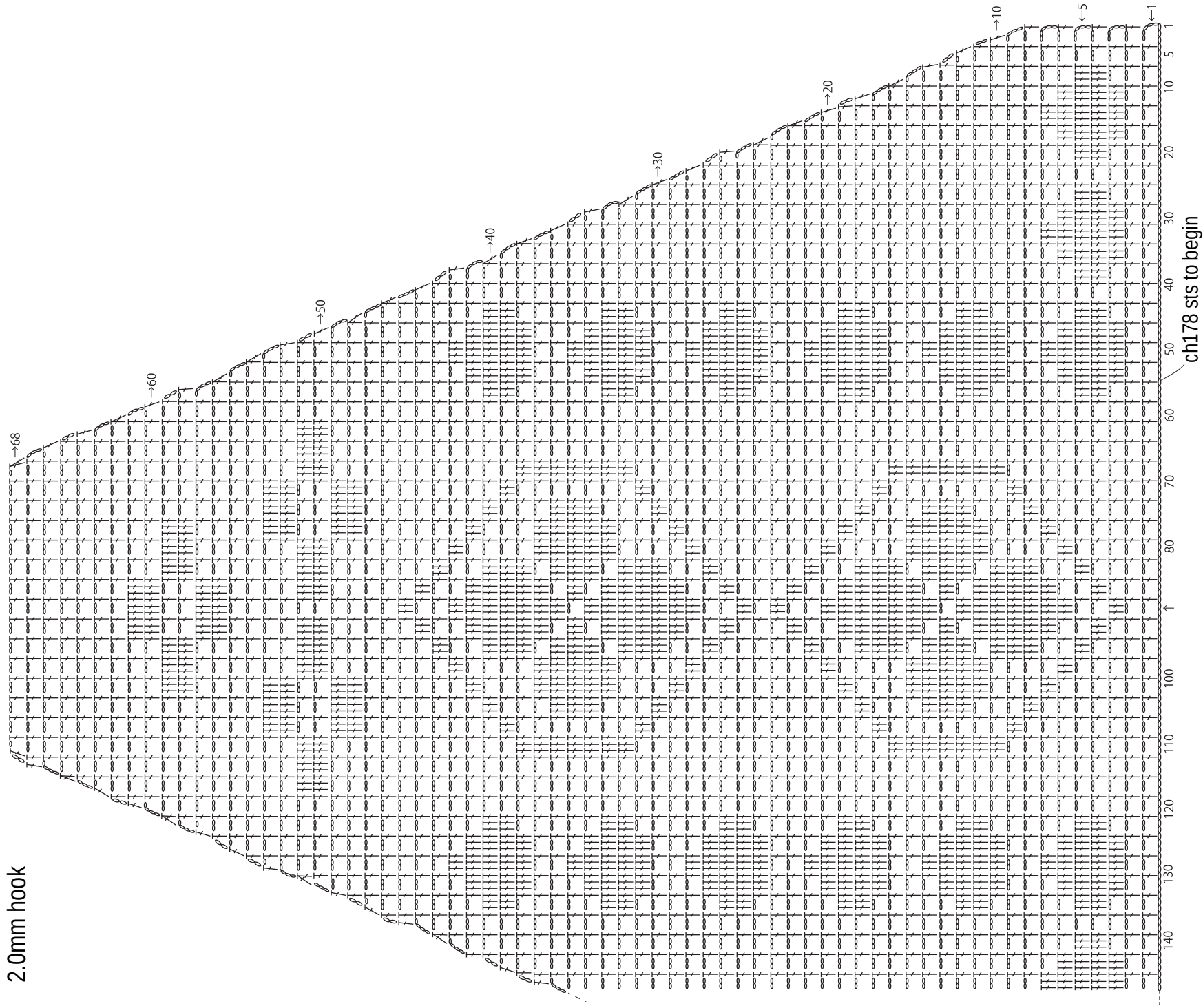


## Finishing 2.0mm hook

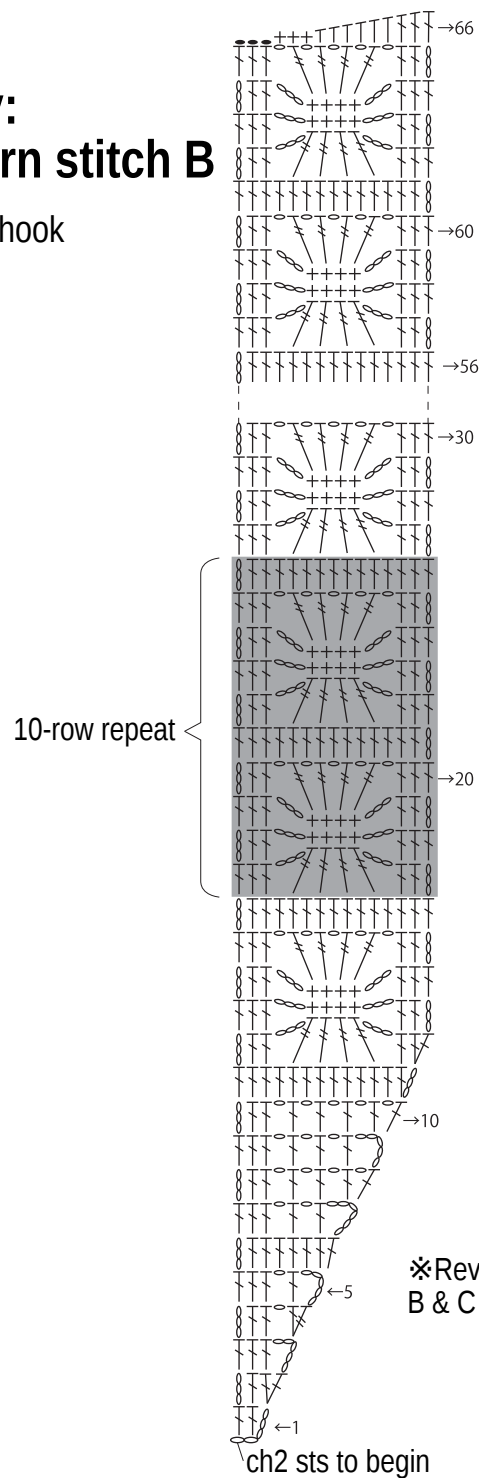


## pattern stitch A

2.0mm hook



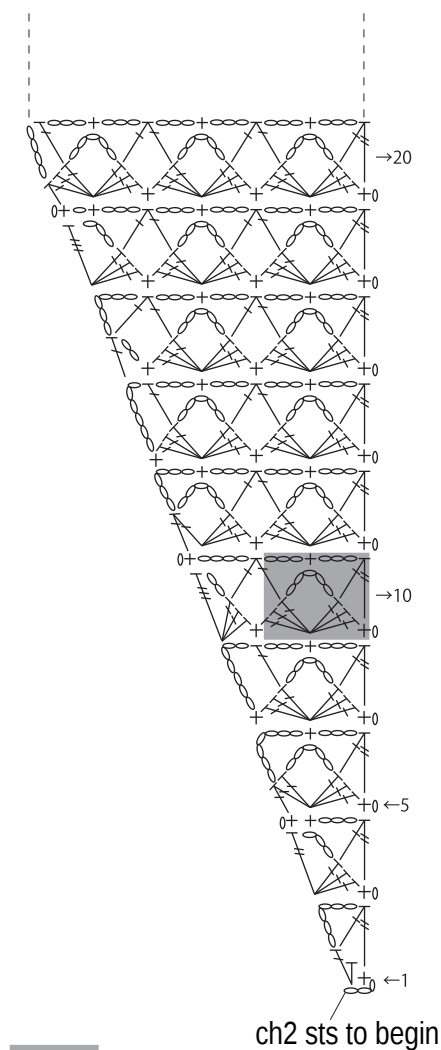
2.0mm hook



✱Reverse shaping of pattern stitches  
B & C for pattern stitches B' & C'.



2.0mm hook



= 8-st, 2-row repeat