

218s-02 Lacy Summer Tee



Suggested yarn:

- Pierrot Yarns Pont du Gard [100% linen; 188 yds/172m per 1.41 oz./40g skein]; color #14 Gris, 6 skeins [240g]

Tools/Notions:

- 2.3mm (approx. US B) crochet hook or size necessary to achieve gauge

Finished measurements:

- bust 100cm/39.37"
- center back neck-to-cuff 40cm/15.75"
- back length 49.5cm/19.49"

Gauge (10cm/4" square):

- pattern stitch: 30 sts and 11 rows

Gauge may vary according to individual crochet style. Change hook size if necessary to achieve gauge. Alternatively, rework pattern with your own gauge measurements.

Summary

※**Note:** Like all Japanese patterns, stitch counts given here for foundation chains do not include any chain sts needed for turning posts.

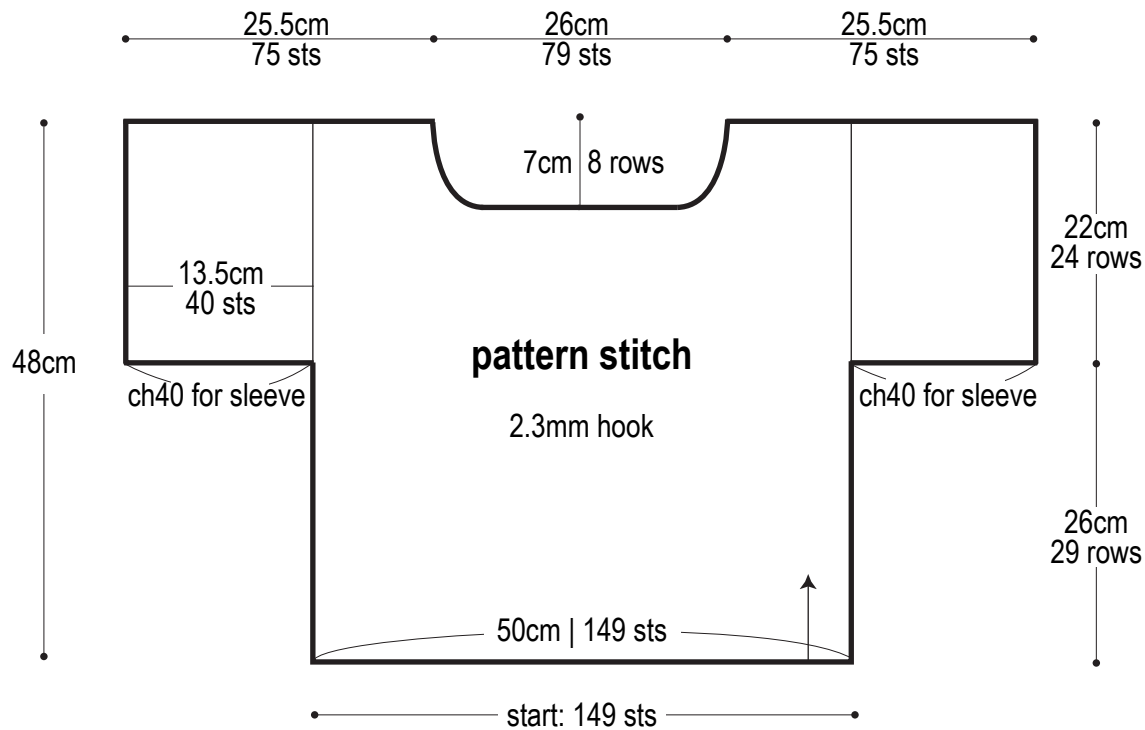
Back & front (make 2): Work foundation chain to begin. Work in pattern stitch. When you reach start of sleeves, increase for sleeve stitches by working pattern stitch into a chain worked in advance for this purpose (one for each sleeve). Refer to chart and schematic for specifics.

Finishing: Seam shoulders and sleeves with chain seam (alternating chain st and slip st as needed to maintain pattern). Work edging in the around at cuffs, hem, and neckline.

Abbreviations:

ch = chain

Back & front (make 2)

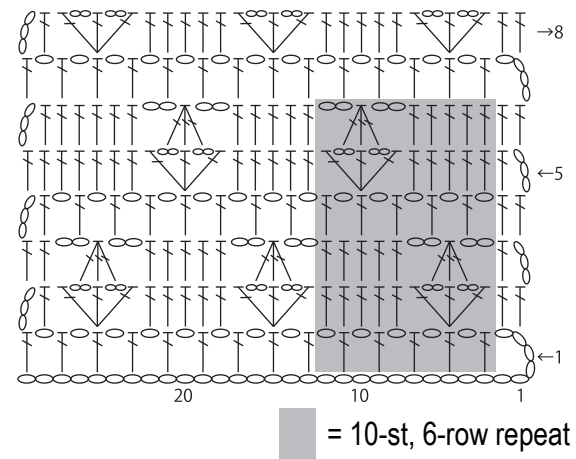


Edging 2.3mm hook

hem, cuff, & collar

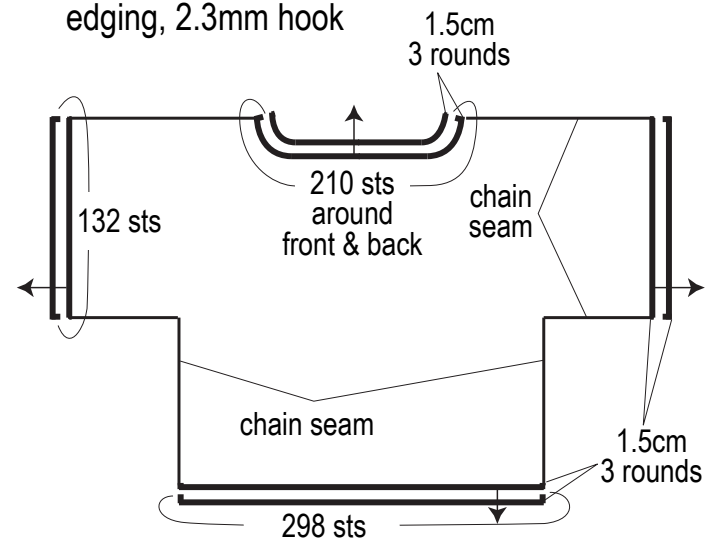


Pattern stitch 2.3mm hook



Finishing

edging, 2.3mm hook



Front & back 2.3mm hook

